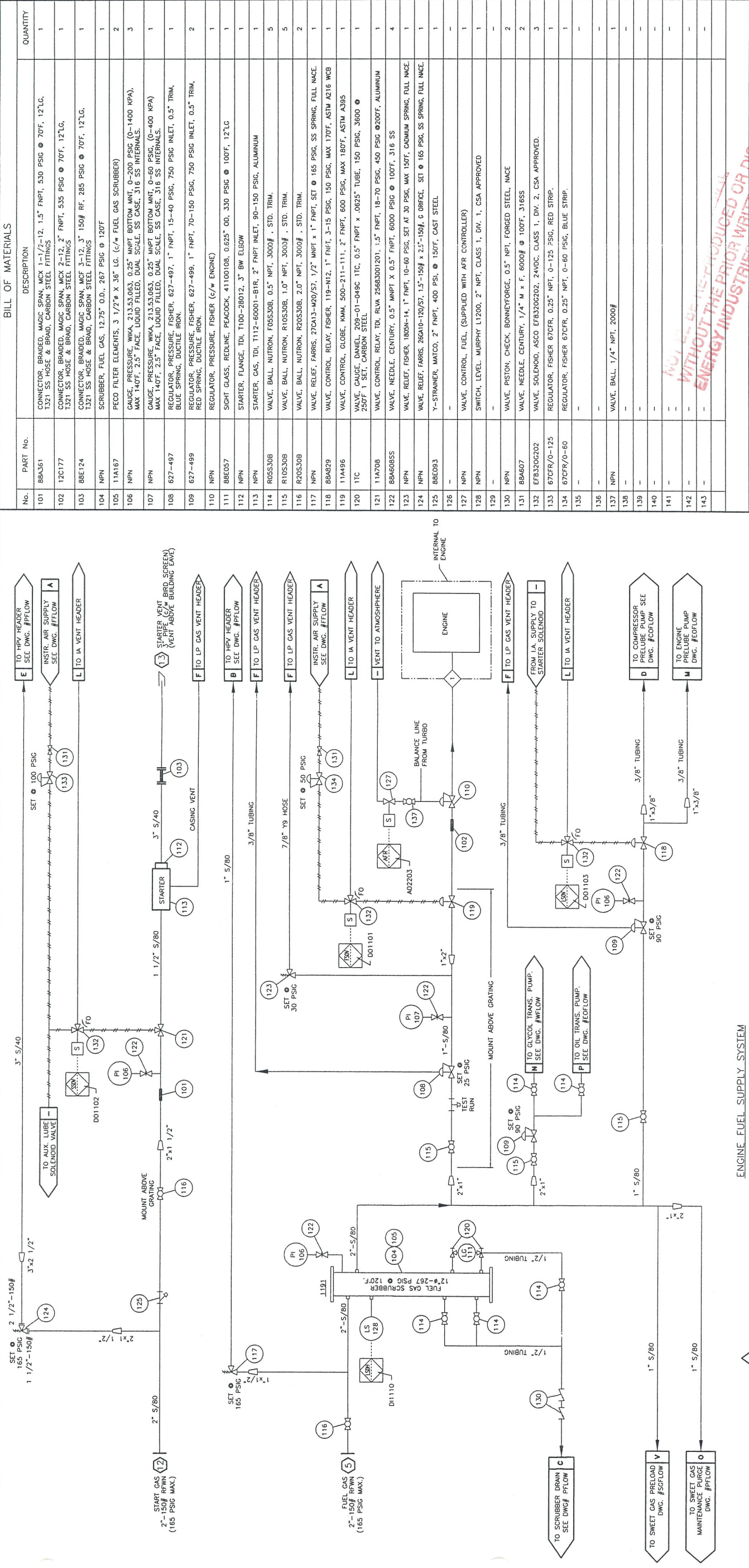


ENGINE FUEL SUPPLY SYSTEM



ENGINE FUEL SUPPLY SYSTEM

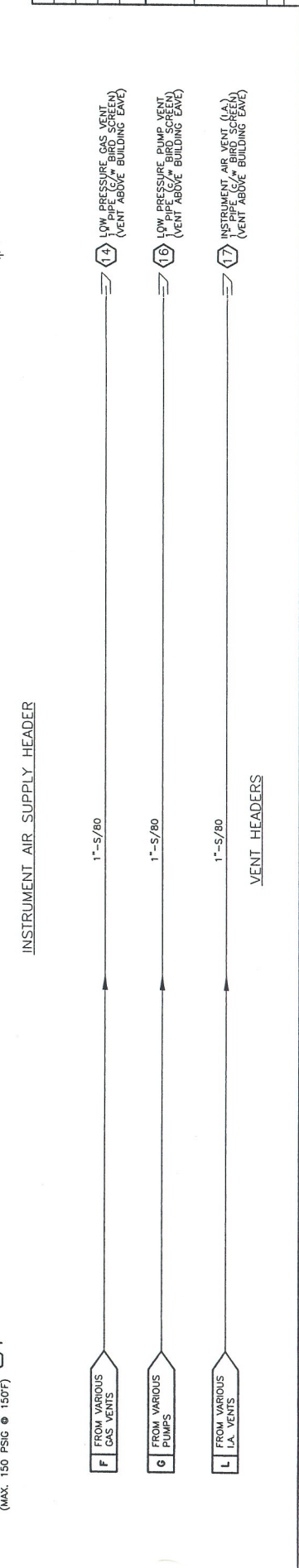
No.	PART No.	DESCRIPTION	QUANTITY
101	88A361	CONNECTOR, BRAIDED, MAGIC SPAN, MCK 1-1/2"-12, 1.5" FNPT, 530 PSIG @ 70F, 12" LG, 1321 SS HOSE & BRAND, CARBON STEEL FITTINGS	1
102	12C177	CONNECTOR, BRAIDED, MAGIC SPAN, MCK 2-1/2"-12, 2" FNPT, 535 PSIG @ 70F, 12" LG, 1321 SS HOSE & BRAND, CARBON STEEL FITTINGS	1
103	88E124	CONNECTOR, BRAIDED, MAGIC SPAN, MCK 3-1/2"-12, 3" FNPT, 535 PSIG @ 70F, 12" LG, 1321 SS HOSE & BRAND, CARBON STEEL FITTINGS	1
104	NPN	SCRUBBER, FUEL GAS, 12.75" O.D., 267 PSIG @ 120F (C/W FUEL GAS SCRUBBER)	1
105	11A167	PECO FILTER ELEMENTS, 3 1/2" x 36" LG. (C/W FUEL GAS SCRUBBER)	2
106	NPN	GAUGE, PRESSURE, WKA, 213.53.063, 0.25" MNPT BOTTOM MNT, 0-200 PSIG (0-1400 KPA), MAX 140F, 2.5" FACE, LIQUID FILLED, DUAL SCALE, SS CASE, 316 SS INTERNALS	3
107	NPN	GAUGE, PRESSURE, WKA, 213.53.063, 0.25" MNPT BOTTOM MNT, 0-60 PSIG, (0-400 KPA) MAX 140F, 2.5" FACE, LIQUID FILLED, DUAL SCALE, SS CASE, 316 SS INTERNALS	1
108	627-497	REGULATOR, PRESSURE, FISHER, 627-497, 1" FNPT, 15-40 PSIG, 750 PSIG INLET, 0.5" TRIM, BLUE SPRING, DUCTILE IRON	1
109	627-499	REGULATOR, PRESSURE, FISHER, 627-499, 1" FNPT, 70-150 PSIG, 750 PSIG INLET, 0.5" TRIM, RED SPRING, DUCTILE IRON	2
110	NPN	REGULATOR, PRESSURE, FISHER (C/W ENGINE)	1
111	88E057	SIGHT GLASS, REDLINE, PEACOCK, 41100108, 0.625" OD, 330 PSIG @ 100F, 12" LG	1
112	NPN	STARTER, FLANGE, TDI, T100-28012, 3" BW ELBOW	1
113	NPN	STARTER, GAS, TDI, T112-60001-B1R, 2" FNPT INLET, 90-150 PSIG, ALUMINUM	1
114	RUSS308	VALVE, BALL, NUTRON, F05S308, 0.5" NPT, 3000# , STD. TRIM.	5
115	RUSS308	VALVE, BALL, NUTRON, R10S308, 1.0" NPT, 3000# , STD. TRIM.	5
116	R20S308	VALVE, BALL, NUTRON, R20S308, 2.0" NPT, 3000# , STD. TRIM.	2
117	NPN	VALVE, RELIEF, FARRIS, 270A13-420/57, 1/2" MNPT x 1" FNPT, SET @ 165 PSIG, SS SPRING, FULL INACE	1
118	88A929	VALVE, CONTROL, RELAY, FISHER, 119-N12, 1" FNPT, 3-15 PSIG, 150 PSIG, MAX 170F, ASTM A216 WCB	1
119	11A486	VALVE, CONTROL, GLOBE, KMM, 500-211-111, 2" FNPT, 600 PSIG, MAX 180F, ASTM A305	1
120	11C	VALVE, GAUGE, DANIEL, 209-01-049C 1TC, 0.5" FNPT x .0625" TUBE, 150 PSIG, 3600 #	1
121	11A708	VALVE, CONTROL, RELAY, TDI, RIVA 25683001201, 1.5" FNPT, 18-70 PSIG, 450 PSIG @200F, ALUMINUM	1
122	88A608SS	VALVE, NEEDLE, CENTURY, 0.5" MNPT X 0.5" FNPT, 6000 PSIG @ 100F, 316 SS	4
123	NPN	VALVE, RELIEF, FISHER, 1890N-14, 1" FNPT, 10-60 PSIG, SET AT 30 PSIG, MAX 150F, CADMIUM SPRING, FULL INACE	1
124	NPN	VALVE, RELIEF, FARRIS, 26GA10-120/57, 1.5"-150# x 2.5"-150#, G ORIFICE, SET @ 165 PSIG, SS SPRING, FULL INACE	1
125	88E093	Y-STRAINER, MATCO, 2" FNPT, 400 PSI, @ 150F, CAST STEEL	1
126	-	-	-
127	NPN	VALVE, CONTROL, FUEL (SUPPLIED WITH AFR CONTROLLERS)	1
128	NPN	SWITCH, LEVEL, MURPHY L1200, 2" NPT, CLASS 1, DIV. 1, CSA APPROVED	1
129	-	-	-
130	NPN	VALVE, PISTON, CHECK, BONNEYFORGE, 0.5" NPT, FORGED STEEL, INACE	2
131	88A607	VALVE, NEEDLE, CENTURY, 1/4" M x F. 8000# @ 100F, 316SS	2
132	EF8320G202	VALVE, SOLENOID, ASCO EF8320G202, 24VDC, CLASS 1, DIV. 2, CSA APPROVED.	3
133	67CFR/0-125	REGULATOR, FISHER 67CFR, 0.25" NPT, 0-125 PSIG, RED STRIP.	1
134	67CFR/0-60	REGULATOR, FISHER 67CFR, 0.25" NPT, 0-60 PSIG, BLUE STRIP.	1
135	-	-	-
136	-	-	-
137	NPN	VALVE, BALL, 1/4" NPT, 2000#	1
138	-	-	-
139	-	-	-
140	-	-	-
141	-	-	-
142	-	-	-
143	-	-	-

NOTES:  
 1. FOR ALL OTHER NOTES & GENERAL INFORMATION SEE DWG. #PFLOW.  
 2. DO NOT COMBINE INSTRUMENT AIR WITH INSTRUMENT GAS VENTS.  
 3. PNEUMATIC TOOL CONNECTIONS ABOVE GRATING, ONE ON EITHER END OF SWID.

SEE NOTE #3

SEE NOTE #3

No.	REVISION	DATE	BY	DATE
3	AS BUILT	03/04/04		CD
2	ADDED ONE ITEM #130 AND PANEL CHANNEL NUMBERS	12/15/03		CD
1	ISSUED FOR CONSTRUCTION	12/08/03		CD
0	ISSUED FOR APPROVAL	11/24/03		CD



No.	REVISION	DATE	BY	DATE
3	AS BUILT	03/04/04		CD
2	ADDED ONE ITEM #130 AND PANEL CHANNEL NUMBERS	12/15/03		CD
1	ISSUED FOR CONSTRUCTION	12/08/03		CD
0	ISSUED FOR APPROVAL	11/24/03		CD

TITLE:		CUSTOMER:	
FUEL FLOW DIAGRAM		DEVON CANADA CORPORATION	
WAUKESHA VHP		GREEN COMPRESSOR STATION	
F3524GS1		LSD: b-25-1/94-G-7	
SCALE: NONE	DATE: 11/24/03	BY: CD	DATE RELEASED: 03/03/04
STEP #510	UNIT #1105	DRAWING NO.:	REV. NO. 3

ENERGY INDUSTRIES INC. 4303 - 11TH STREET N.E. CALGARY ALBERTA CANADA

WITHOUT THE PRIOR WRITTEN CONSENT OF ENERGY INDUSTRIES INC.