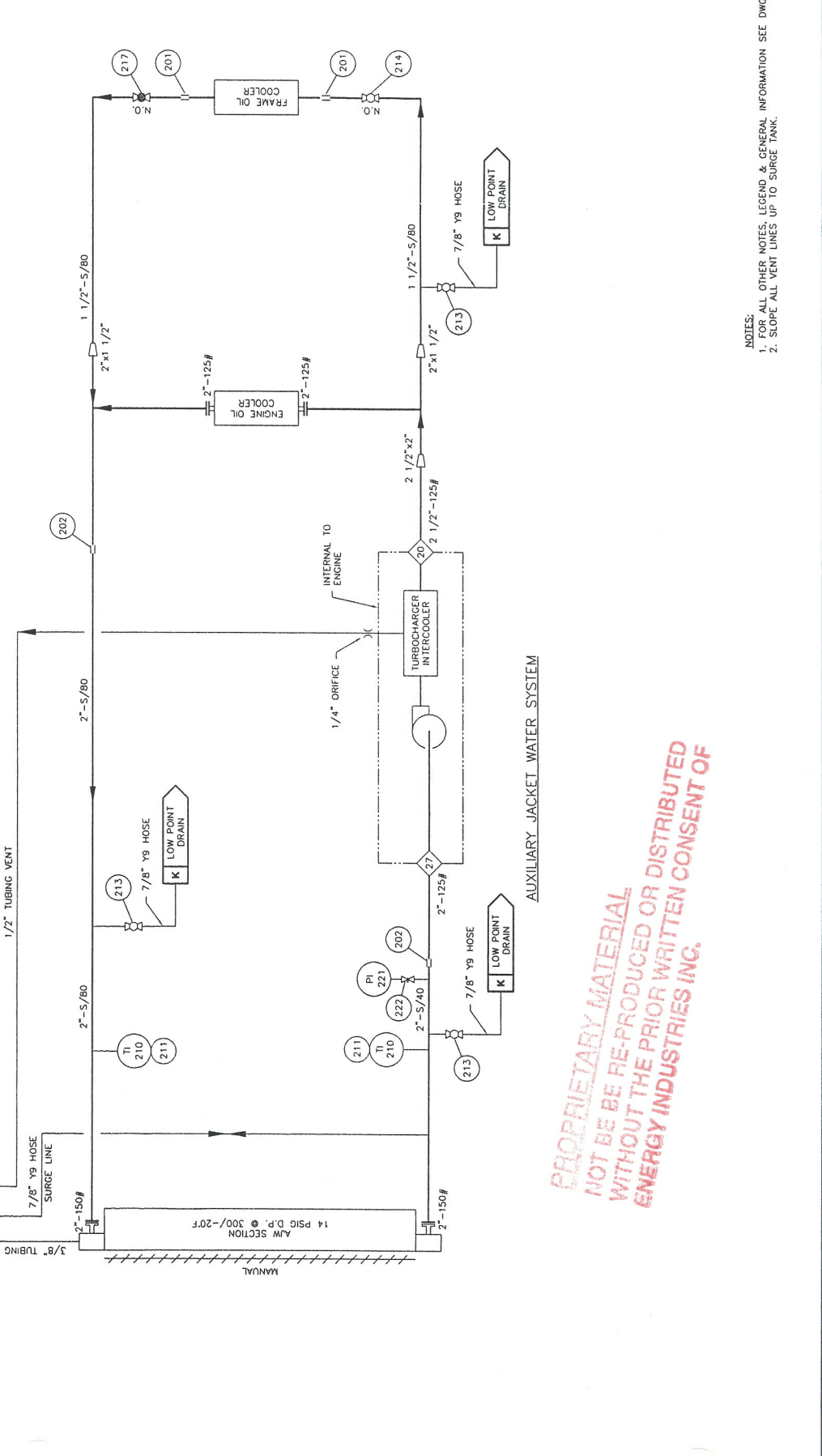
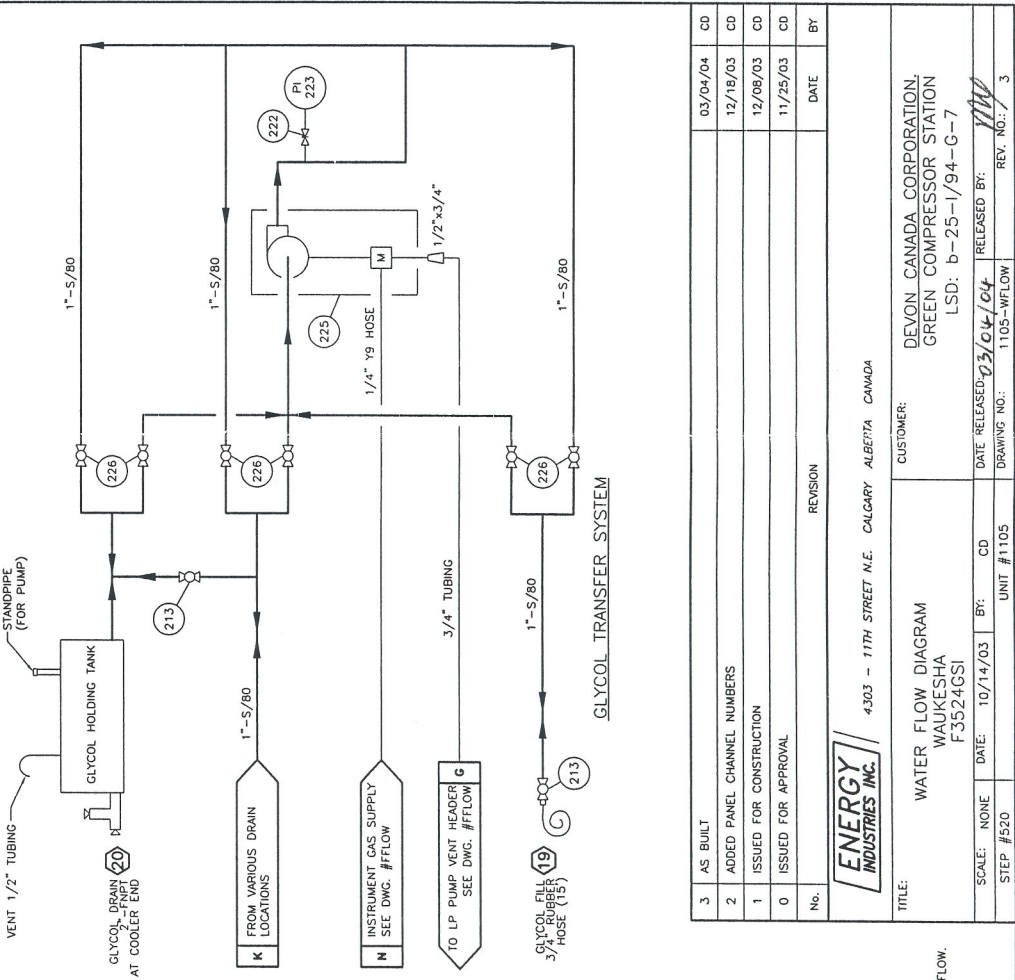
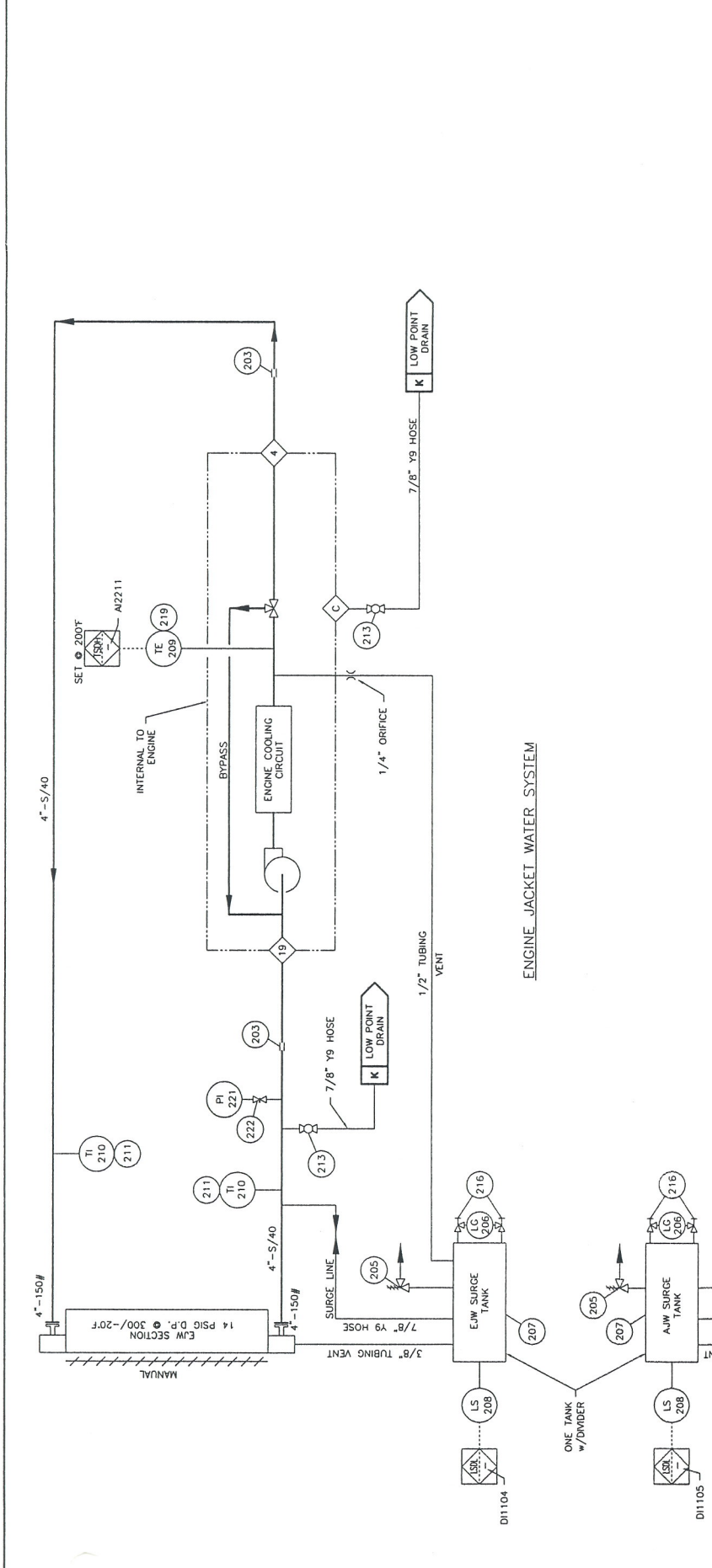


BILL OF MATERIALS			
No.	PART No.	DESCRIPTION	QUANTITY
201	11A306	COUPLING, PIPE, AEROUPIP, NH1600C150B0350, 1.5" PIPE	2
202	0038-0013-011	COUPLING, PIPE, DRESSER, 0038-0013-011, 2" PIPE, 1500 PSIG, MAX 212°F, STYLE 38, CARBON STEEL W/ BUNA S GASKET	2
203	0038-0038-011	COUPLING, PIPE, DRESSER, 0038-0038-011, 4" PIPE, 1029 PSIG, 212°F, STYLE 38, CARBON STEEL W/ BUNA S GASKET	2
204	12C281	GLYCOL, UCATHERM, 50% ETHYLENE GLYCOL - 50% WATER (SEE STEP #921)	615 L
205	TRC-104	CAP, RADIATOR, STANT, STN-10294, SET AT 15 PSIG	2
206	8BE057	SIGHT GLASS, REDLINE, PEACOCK, 411001108, 0.625" OD, 330 PSIG @ 100 F, 12" LG	2
207	8BE338	SURGE TANK, 16" x 60" LG, DUAL COMPARTMENT (DWG. #5116X60D REV. 6) (SEE STEP #621)	1
208	NPN	SWITCH, LEVEL, MURPHY L1200, 2"NPT, ELECTRIC, CLASS 1 DIV 1, CSA APPROVED.	2
209	NPN	THERMOCOUPLE, K TYPE, 0.25" TUBE x 0.5" MNPT, 6" PROBE, 0.250" OD, 40 FT ARMOURD LEADS	1
210	88A186	THERMOMETER, BI METALLIC, TEND, 33025A006640, 0.5" MNPT, 0-250°F (-20-120°C), 3" FACE, 2.50" PROBE, 0.250" OD, DUAL SCALE	4
211	88A718	THERMOWELL, 0.5" FNPT X 0.75" MNPT, 2.50" DEPTH, 0.260" BORE, 316 SS	4
212	-	-	-
213	8BE073	VALVE, BALL, NUTRON, T3-R10S308, 1.0" FNPT, 3000# @ 120°F, RP.	7
214	8BE109	VALVE, BALL, NUTRON, T3-R15S308, 1.5" FNPT, 3000# @ 120°F, RP.	1
215	-	-	-
216	11C	VALVE, GAUGE, DANIEL, 209-01-049C 11C, 0.5" FNPT X 0.625" TUBE, 1 SET, CARBON STEEL	2
217	8BE271	VALVE, GLOBE, NEWCO, 1 1/2" 28T-FS2, 1.5" FNPT CLASS 800, 2000 PSIG @ 100 F, REG. PORT, ASTM A105	1
218	-	-	-
219	NPN	THERMOWELL, 0.5" FNPT x 1.0" MNPT, 2.5" DEPTH, 0.260" BORE, 316SS	1
220	-	-	-
221	NPN	GAUGE, PRESSURE, WKA, 0.25" MNPT, BM, 0-30 PSIG, MAX 140°F, 4 1/2" FACE, LIQUID FILLED, DUAL SCALE	2
222	NPN	VALVE, NEEDLE, CENTURY, 0.25" MNPT x 0.25" FNPT, 6000 PSIG @ 100°F, 316 SS	3
223	NPN	GAUGE, PRESSURE, WKA, 21353068, 0.25" MNPT, BM, 0-50 PSIG, MAX 140°F, 4 1/2" FACE, LIQUID FILLED, DUAL SCALE	1
224	-	-	-
TRANSFER PUMP STATION			
225	NPN	PUMP, PNEUMATIC, DIAPHRAGM, WILDEN, P1-ALL-BN-BN-ABN, ALUMINUM BODY, PLASTIC AIR VALVE.	1
226	8BE073	VALVE, BALL, NUTRON, T3-R10S308, 1.0" FNPT, 3000# @ 120°F, RP.	6



PROPRIETARY MATERIAL  
 NOT BE RE-PRODUCED OR DISTRIBUTED  
 WITHOUT THE PRIOR WRITTEN CONSENT OF  
 ENERGY INDUSTRIES INC.

3	AS BUILT	03/04/04	CD
2	ADDED PANEL CHANNEL NUMBERS	12/18/03	CD
1	ISSUED FOR CONSTRUCTION	12/08/03	CD
0	ISSUED FOR APPROVAL	11/25/03	CD
No.	REVISION	DATE	BY

TITLE: WATER FLOW DIAGRAM  
 WAUKESHA F3524GSI  
 CUSTOMER: DEVON CANADA CORPORATION, GREEN COMPRESSOR STATION  
 LSD: b-25-1/94-G-7  
 SCALE: NONE  
 DATE: 10/14/03  
 BY: CD  
 UNIT #1105  
 DRAWING NO.: 1105-WFLOW  
 REV. NO.: 3  
 ENERGY INDUSTRIES INC. 4303 - 11TH STREET N.E. CALGARY ALBERTA CANADA

NOTES:  
 1. FOR ALL OTHER NOTES, LEGEND & GENERAL INFORMATION SEE DWG. #PFLOW.  
 2. SLOPE ALL VENT LINES UP TO SURGE TANK.