



MAJOR COMPONENT WEIGHTS

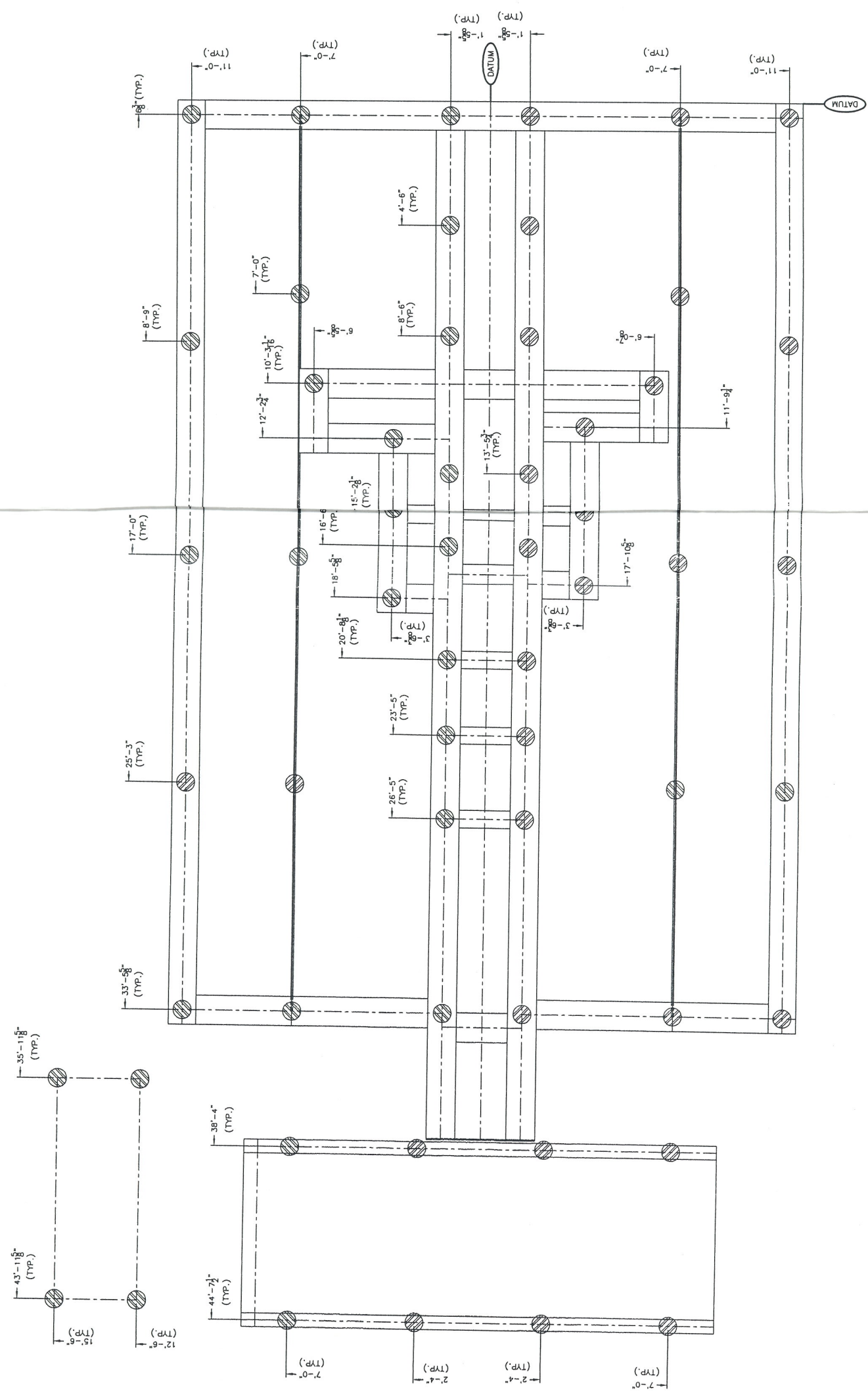
Description	Weight (lbs.)
COMPRESSOR FRAME:	4,300
ENGINE: (w/ FLUIDS)	16,000
COOLER: (DRY)	17,600
SUCTION SCRUBBER	2,400
INTERSTAGE SCRUBBER	1,600
THROW #1 CYLINDER & BOTTLE:	5,050
THROW #2 CYLINDER & BOTTLE:	4,450
SKID BASE: (w/ CONCRETE)	61,200
PIPING:	10,000
BUILDING	9,500
INSTRUMENTATION & ELECTRICAL:	5,000
CRANE & RAIL:	6,100
MISCELLANEOUS:	3,000
TOTAL PACKAGE:	146,200

⊗ - SUPPORT POINT (NOT NECESSARILY A PILE LOCATION)

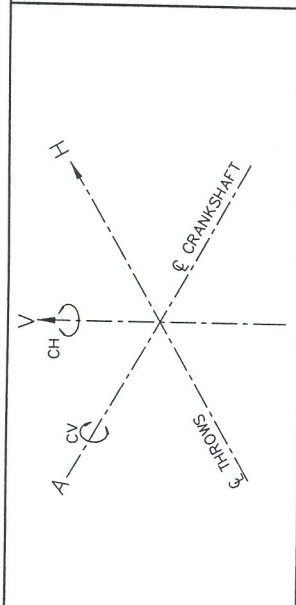
PLEASE READ CAREFULLY

1. INSTALLATION OF THIS SKIDDED COMPRESSOR PACKAGE IS THE RESPONSIBILITY OF THE OWNER.
2. ALL PILE CAPS MUST BE SHIMMED AND WELDED TO THE SKID WITH CONTINUOUS WELDMENTS USING GOOD WELDING PRACTICES. SWITCH WELDING IS NOT ACCEPTABLE. ENERGY INDUSTRIES INC. DOES NOT WARRANT VIBRATION ISSUES RELATING TO POOR PILE TO SKID CONNECTIONS, OR INSUFFICIENT PILE DESIGN.
3. PACKAGES INCORPORATING SEAL PANS (DRIP) IN THE WINGS WILL RESTRICT ACCESS TO SUPPORTS BELOW. IT MAY BE NECESSARY TO CUT THE SEAL PAN TO GAIN ACCESS TO THESE AREAS.
4. A RECIPROCATING COMPRESSOR IS CAPABLE OF PRODUCING VERY HIGH HORIZONTAL COUPLES ABOUT THE CENTERLINE OF THE CRANKCASE. CAREFUL CONSIDERATION MUST BE GIVEN TO THE LOCATION OF SUPPORT BELOW THE CYLINDER CROSSHEAD AREA OF THE SKID. A SINGLE POINT OF SUPPORT BELOW EACH THROW IS NOT SUFFICIENT.
5. THIS DRAWING INDICATES THE MINIMUM RECOMMENDED NUMBER OF SUPPORT POINTS. THE ACTUAL NUMBER AND LOCATION REQUIRED MAY BE MORE, DEPENDING ON SOIL CONDITIONS, DEPTH OF REFUSAL, ETC.. ENERGY INDUSTRIES INC. DOES NOT AND CANNOT WARRANT THIS SUGGESTED DESIGN AND IT IS STRONGLY RECOMMENDED THAT A CIVIL ENGINEER FAMILIAR WITH PACKAGED COMPRESSORS BE CONSULTED TO DESIGN THE FOUNDATION FOR THIS COMPRESSOR PACKAGE.

ISSUED FOR REFERENCE	01/07/04	CD
REVISION	DATE	BY
PROPRIETARY MATERIAL: NOT TO BE REPRODUCED OR DISTRIBUTED WITHOUT THE PRIOR WRITTEN CONSENT OF ENERGY INDUSTRIES INC.		
 4303 - 11TH STREET N.E. CALGARY ALBERTA CANADA		
TITLE: SUGGESTED PILE LOCATIONS WALKESHA F3524GS1 / AREL JCK/2 -2 AIR-X-CHANGERS 120EH-88-1B CUSTOMER: DEVON CANADA CORPORATION GREEN COMPRESSOR STATION LSD: b-25-1/94-G-7		
SCALE: 1/2"=1'-0"	DATE: 01/07/04	BY: CD
UNIT # 1105	DRAWING NO.: 1105-PILE	RELEASED BY: 
W.O. # 1105		REV. 0



ALL INFORMATION CONTAINED HEREIN IS UNCLASSIFIED
 NOT TO BE REPRODUCED OR DISTRIBUTED
 WITHOUT THE PRIOR WRITTEN CONSENT OF
 ENERGY INDUSTRIES INC.



THROW #	1	2	3	4
CYLINDER BORE (IN.)	12 1/2"	9 1/8"	N/A	N/A
UNBALANCED SHAKING FORCES = NIL (ALL FRAMES)				
Description				
PRIMARY VERTICAL COUPLE	log	Fl. lbs.		
PRIMARY HORIZONTAL COUPLE	CV1	4,350		
SECONDARY VERTICAL COUPLE	CH1	4,487		
SECONDARY HORIZONTAL COUPLE	CV2	NIL		
	CH2	1767		