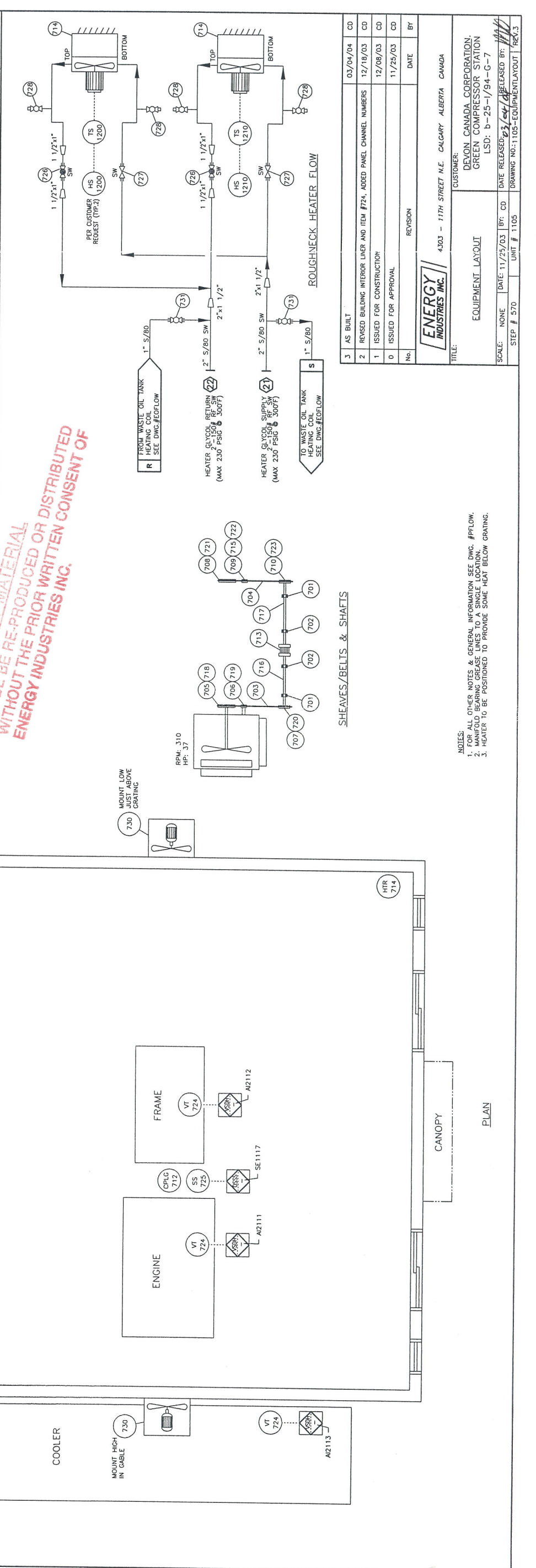


BUILDING SPECIFICATIONS & DESIGN NOTES		ENERGY INDUSTRIES SCOPE OF SUPPLY	
No.	DESCRIPTION	DESCRIPTION	QUANTITY
1.	THE BUILDING SHALL BE DESIGNED FOR MIN. WIND LOADS OF 137 KMPH, SNOW LOADS OF 2.4 KPA, HOURLY WIND PRESSURE OF 0.31 KPA (1/10), 0.38 KPA (1/30) AND 0.46 KPA (1/100), AND SEISMIC DATA Za=0, Zv=1 AND V=0.05. ALL BOLTS, SCREWS, ETC. USED FOR FASTENING ALUMINUM TO ALUMINUM AND ALUMINUM TO STEEL SHALL BE AUSTINITE STAINLESS STEEL OR CARBON PLATED.	BEARING, IMPERIAL STYLE, PILLOW BLOCK, 2.6875" BORE, EXP.	2
2.	BUILDING DWG. TO BE STAMPED BY A PROFESSIONAL ENGINEER.	BEARING, IMPERIAL STYLE, PILLOW BLOCK, 2.6875" BORE, NON-EXP.	2
3.	GENERAL NOTES NOTES WHICH ARE APPLICABLE TO THIS JOB WHEN SHADED. SUBNOTES WHICH ARE APPLICABLE WHEN SHADED.	BELT, COOLER, TYPE C, 5 GROOVE, PART # (SHOP TO ORDER) SIZE	1
4.	INSULATION - FIBREGLASS WALLS R-12 3 LB/CU.FT. DENSITY SOUND R-20 ROOF R-12 3 LB/CU.FT. DENSITY SOUND R-20 DOORS - 20 GA. METAL, INSULATED (NORMAL SIZES) 3'x7' SINGLE WOVEN PH PH LS DC SF CC CP 6'x7' DOUBLE WOVEN PH PH LS DC SF CC CP WOVWD WV - WEATHER STRIPPING LS - LOCKSET CC - CHECKCHAIN PH - PANIC HARDWARE SF - STEEL FRAME WOVWD - WIRE GLAZED WINDOW IN BOTH DOORS	BELT, ENGINE, TYPE C, 4 GROOVE, PART # (SHOP TO ORDER) SIZE BUSHING, COOLER SHAFT, TYPE 'F', 2.6875" BORE BUSHING, COOLER IDLER, TYPE 'E', 2.1875" BORE BUSHING, COOLER JACKSHAFT, TYPE 'E', 2.6875" BORE BUSHING, ENGINE, (G/W ENGINE) BUSHING, ENGINE IDLER, TYPE 'E', 1.9375" BORE BUSHING, ENGINE JACKSHAFT, TYPE 'E', 2.6875" BORE CONTROL PANEL, SINTech SERIES XI, 24 VDC, CLASS I, DIV. II, C/W AFR CONTROLLER (SEE STEP #151)	1
5.	WINDOWS-HORIZ. SLIDING C/W SCREEN (DOUBLE GLAZED) QTY 4 40x40 QTY 40x50 QTY 40x60 QTY 40x80 WIRE GLAZED	COUPLING, SHAFT, GRID-LGN, 1100T, 2.6875" ID BORE & KEY BOTH ENDS HEATER, RUFFNECK, HPS-20, 1/2 HP, 120V/1PH/60HZ, XP C/W EXPLOSION PROOF XT-311 DEFENDER THERMOSTAT (SHIP LOOSE)	1
6.	WINDOVS-HORIZ. SLIDING C/W SCREEN (DOUBLE GLAZED) QTY 4 40x40 QTY 40x50 QTY 40x60 QTY 40x80 WIRE GLAZED	IDLER ASSEMBLY, ENGINE, W/O SHEAVE, 1.9375" SHAFT JACKSHAFT, 2.6875" x 54" LG. C/W 0.625" x 0.3125" KEY x 6" LG. BOTH ENDS JACKSHAFT, 2.6875" x 54" LG. C/W 0.625" x 0.3125" KEY x 6" LG. BOTH ENDS SHEAVE, COOLER, 24.4" P.D., TYPE C, 5 GROOVE SHEAVE, COOLER IDLER, 10.9" P.D., TYPE C, 5 GROOVE SHEAVE, COOLER JACKSHAFT, 10.9" P.D., TYPE C, 5 GROOVE SHEAVE, ENGINE, 9.6" P.D., TYPE C, 6 GROOVE (G/W ENGINE) SHEAVE, ENGINE IDLER, 10.4" P.D., TYPE C, 4 GROOVE SHEAVE, ENGINE JACKSHAFT, 16.4" P.D., TYPE C, 4 GROOVE	1
7.	LINING 24 GA. FLUTED ALUMINUM 20 GA. WHITE PERFORATED ALUMINUM 24 GA. ALUMINUM - WHITE (BOTTOM 3'-0" ONLY)	TRANSMITTER, VIBRATION, METRIX ST5484E-121-320-00, 1" IPS PK, 1/4" NPT, 4-20 MA, CLASS 1, DIV. 1, GR. B, C AND D. PICKUP, MAGNETIC, (G/W ENGINE) VALVE, GLOBE, NEWCO, 1" SW, CLASS 800# FS. VALVE, GATE, NEWCO, 1 1/2" SW, CLASS 800# FS. VALVE, BALL, NUTRON, TEFLON SEAT, 3/4"-200# NPT, STD TRIM. VALVE, BALL, NUTRON, TEFLON SEAT, 3/4"-200# NPT, STD TRIM. WRENCH, PISTON NUT, JOK/2 FRAME (G/W TOOLBOX C/W FRAME) VENTILATION FAN (G/W BUILDING) VALVE, BALL, NUTRON, TEFLON SEAT, 1" -2000# SW STD TRIM.	1
8.	ERECTION ON SITE BY BLDG. MANUFACTURER AT FAB. SHOP BY BLDG. MANUFACTURER	VALVE, BALL, NUTRON, TEFLON SEAT, 1" -2000# SW STD TRIM.	2
9.	WALL LOUVRES (NOMINAL SIZES) STAMPED LOUVRE C/W SLIDE CLOSURE AND SCREEN 4 24"x30" ADJUSTABLE LOUVRE C/W MANUAL CONTROL AND SCREEN		
10.	RIDGE VENTILATOR RIDGE VENTILATOR C/W MANUAL CONTROLS & BIRDSCREEN ACOUSTIC TYPE RIDGE VENTILATOR C/W MANUAL CONTROLS & BIRDSCREEN LENGTH - FULL		
11.	TYPE OF BUILDING SELF FRAMING-SHED ALUMINUM PRE-PAINTED STEEL MATERIAL - WALL AND ROOF PANELS (22 GA. MIN.) GALVALUM ALUMINUM PRE-PAINTED STEEL COLOR: TBA SPEC. NO. ROOF TBA SPEC. NO. DOORS TBA SPEC. NO. TRM TBA SPEC. NO.		
12.	TRANSLUCENT WALL PANELS SIZE: 12'-2" (APPROX) LG. x 20" WIDE COLOR: WHITE (TRANSLUCENT) QTY: 6 (3 PER SIDE)		
13.	ROOF SLOPE 2:12 3:12 4:12		



No.	REVISION	DATE	BY
3	AS BUILT	03/04/04	CD
2	REISED BUILDING INTERIOR LIDER AND ITEM #724, ADDED PANEL CHANNEL NUMBERS	12/19/03	CD
1	ISSUED FOR CONSTRUCTION	12/08/03	CD
0	ISSUED FOR APPROVAL	11/25/03	CD

ENERGY INDUSTRIES INC.
4303 - 117TH STREET N.E. CALGARY ALBERTA CANADA

CUSTOMER:
DEVON CANADA CORPORATION,
GREEN COMPRESSOR STATION
LSD: b-25-1/94-G-7

TITLE:
EQUIPMENT LAYOUT

SCALE: NONE | **DATE:** 11/25/03 | **BY:** CD | **DATE RELEASED:** 11/25/03 | **RELEASED BY:** [Signature]

STEP # 570 | **UNIT # 1105** | **DRAWING NO.: 1105-EQUIPMENT LAYOUT** | **REV. 3**

NOTES:
1. FOR ALL OTHER NOTES & GENERAL INFORMATION SEE DWG. #PFLOW.
2. MANIFOLD BEARING GREASE LINES TO A SINGLE LOCATION.
3. HEATER TO BE POSITIONED TO PROVIDE SOME HEAT BELOW GRATING.