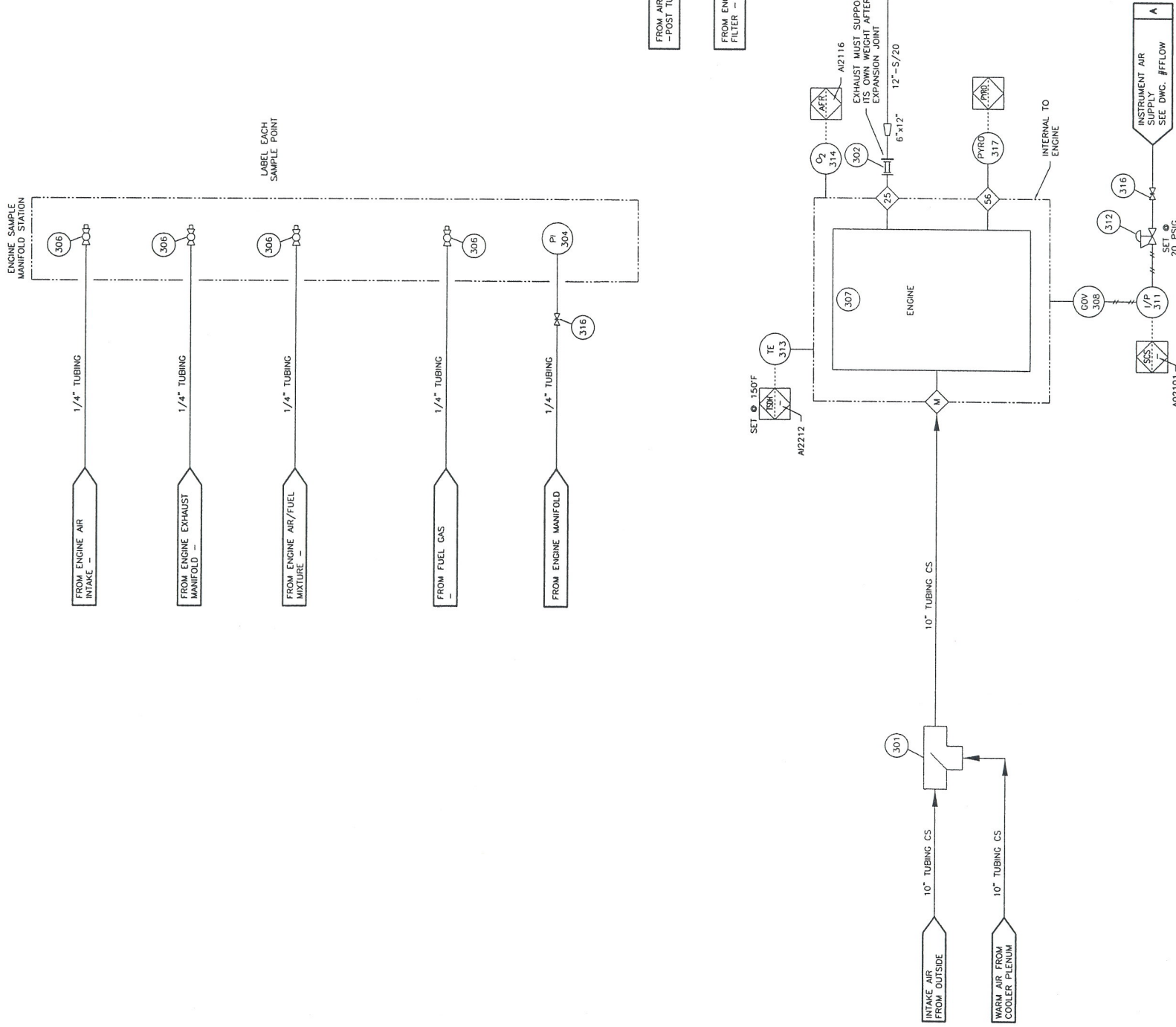


BILL OF MATERIALS

No.	PART No.	DESCRIPTION	QUANTITY
301	11A012	AIR DIVERTER BOX, ENERGY INDUSTRIES, 10" FF, 14" LG X 12" W X 12" H, SA-36 (SEE STEP #531)	1
302	NPN	EXPANSION JOINT, 6"-150# FF x CUSTOM WALK CONN, 12" LG, SS (c/w ENGINE)	1
303	NPN	EXPANSION JOINT, MAGIC SPAN, 1215, 12" FF, 150 PSIG, 16" LG, 1321 SS BELLOW, CARBON STEEL FITTINGS	2
304	NPN	GALVE, PRESSURE, WIKKA, 213.53.0633, 0.25" MNPT BOTTOM MNT, -30HG-30PSIG (-100KPA-200KPA), MAX 140F, 2.5" FACE, LIQUID FILLED, DUAL SCALE, SS CASE, 316 SS INTERNALS	1
305	NPN	MUFFLER/CATALYTIC CONVERTER COMBO, SILENOX, MODEL JDD5-12-OY-40-36-SIS0312, HOSPITAL GRADE, SIDE IN AT 3 O'CLOCK AND SIDE OUT AT 12 O'CLOCK, c/w TWO TEST POINTS ON INLET, TWO TEST POINTS ON THE SHELL (CORE).	1
306	M115-25	VALVE, BALL, BERBOM, M115-25, 0.25" FNPT, 1000 PSIG @ 150F, ASTM A351CF8M BODY & BALL, 316SS STEM	5
307	NPN	IGNITION, WAUKESHA, CEC c/w DSM (c/w ENGINE)	1
308	NPN	ACTUATOR, GOVERNOR, 3-15 PSIG. (c/w ENGINE)	1
309	8BA718	THERMOWELL, 0.5" FNPT x 0.75" MNPT, 2.5" DEPTH, 0.26" BORE, 316 SS	2
310	NPN	THERMOCOUPLE, K TYPE, ATS ALTEMP, 0.25" TUBE x 0.5" MNPT, 6" PROBE, 0.250" OD, 60 FT ARMoured LEADS	2
311	NPN	IP TRANSDUCER, FISHER, TYPE 546, 3-15 PSIG OUTPUT.	1
312	67CFR/0-35	REGULATOR, PRESSURE, FISHER 67 CFR-362, 1/4" FNPT, 0-35 PSIG RANGE, 250 PSIG MAX. INLET, SILVER SPRING.	1
313	NPN	THERMOCOUPLE, K TYPE, (c/w PYROMETER KIT)	1
314	NPN	OXYGEN SENSOR, (c/w AFR CONTROLLER)	1
315	-	-	-
316	8BA607	VALVE, NEEDLE CENTURY, 1/4" NPT 6000# @ 100F.	2
317	NPN	PYROMETER KIT	1
318	8BE547	REGULATOR, PRESSURE, EXAIR, 9008, 1/4" NPT c/w PRESSURE GAUGE	1
319	8BE432	EDUCTOR, CRANKCASE, EXAIR, LINE VAC, 6084, 2" END CONNECTIONS, 0.375" NPT AIR CONN., ALUMINIUM	1

PROPRIETARY MATERIAL
 NOT BE RE-PRODUCED OR DISTRIBUTED
 WITHOUT THE PRIOR WRITTEN CONSENT OF
 ENERGY INDUSTRIES INC.



- NOTES:
- FOR ALL OTHER NOTES & GENERAL INFORMATION SEE DWG. #FFLOW.
 - INSULATION TO EXTEND BEYOND BUILDING WALL AND OPENED TO ATMOSPHERE.

No.	REVISION	DATE	BY	DATE
4	AS BUILT	03/04/04	CD	03/04/04
3	ADDED CRANKCASE EDUCTOR SYSTEM	01/29/04	LH	01/29/04
2	ADDED PANEL CHANNEL NUMBERS	12/18/03	CD	12/18/03
1	ISSUED FOR CONSTRUCTION	12/08/03	CD	12/08/03
0	ISSUED FOR APPROVAL	11/25/03	CD	11/25/03

AIR INTAKE & EXHAUST SYSTEMS

ENERGY INDUSTRIES INC.
 4303 - 11TH STREET N.E. CALGARY ALBERTA CANADA

TITLE: AIR & EXHAUST FLOW DIAGRAM
 WAUKESHA L3524GSI

CUSTOMER: DEVON CANADA CORPORATION
 GREEN COMPRESSOR STATION
 LSD: b-25-1/94-G-7

SCALE: NONE DATE: 11/25/03 BY: CD DATE RELEASED: 03/04/04 RELEASED BY: [Signature]
 STEP #530 UNIT #1105 DRAWING NO.: 1105-AE-FLOW REV. NO.: 4