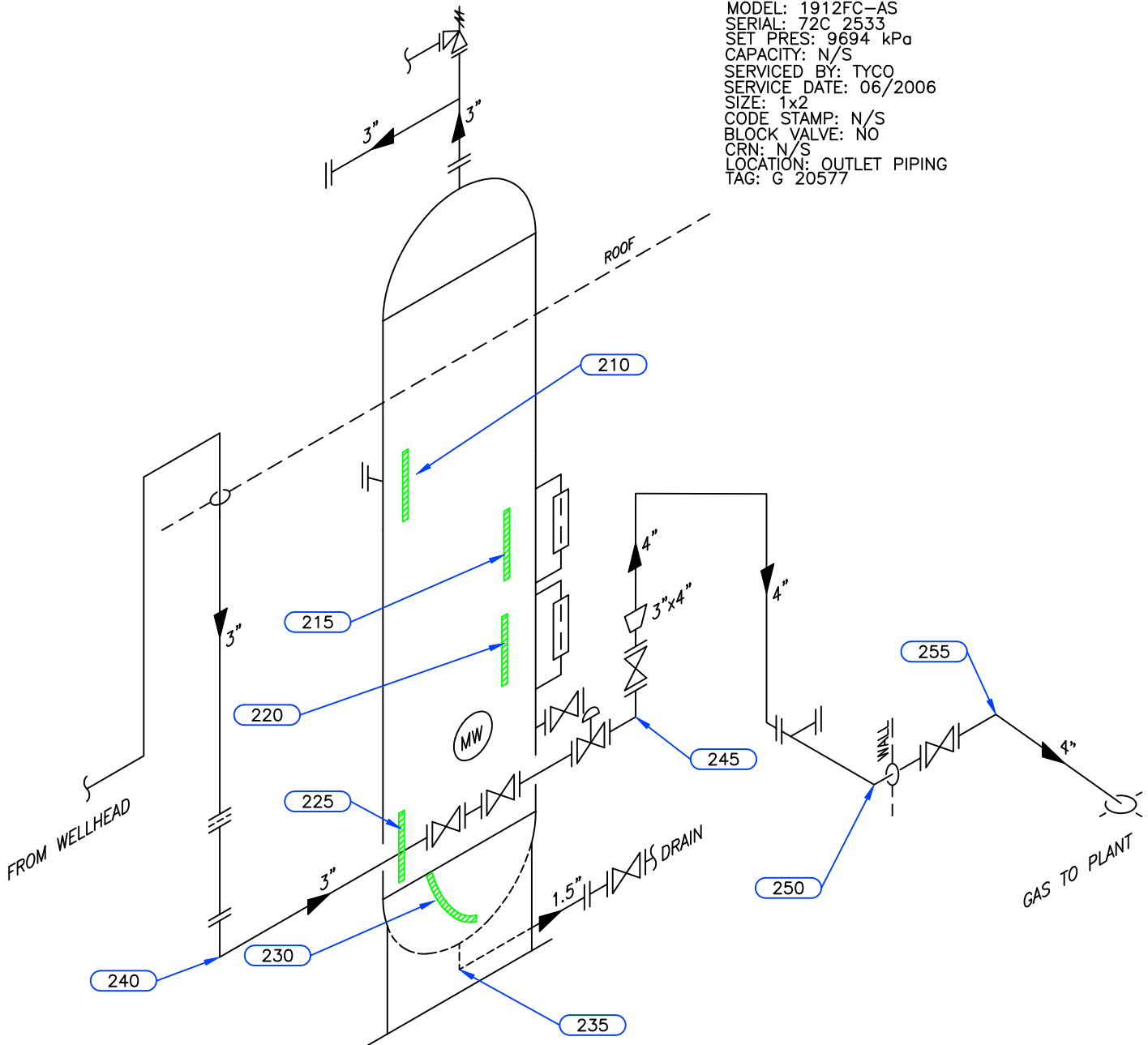


PSV DATA

MFG: CONSOILDATED
 MODEL: 1912FC-AS
 SERIAL: 72C 2533
 SET PRES: 9694 kPa
 CAPACITY: N/S
 SERVICED BY: TYCO
 SERVICE DATE: 06/2006
 SIZE: 1x2
 CODE STAMP: N/S
 BLOCK VALVE: NO
 CRN: N/S
 LOCATION: OUTLET PIPING
 TAG: G 20577



04/2012: INLET & OUTLET PIPING REMOVED, VESSEL TAG IS OUT OF SERVICE BUT THE DUMP LINES ARE STILL CONNECTED
 54P0526BC

Equip. No. V-102 Prov. Reg. No. Ⓐ 242825 C.R.N. F-7742.1 Serial No. 88-1029 Yr. Inst. _____
 Code/Div. ASME VIII, DIV1 Size: 30in x 96in Manufacturer: I.P. CONSTRUCTORS LIMITED Yr. Blt. 1988
 C. Stamp: NO Service: SOUR PWHT: HT Radiography: RT-1 Insulated: NO

Design & Materials Data

HEAD:
 Top Mat'l. SA 516 70N Top Nom. 34.0mm Top C.A. 3.2mm
 Btm. Mat'l. _____ Btm. Nom. _____ Btm. C.A. _____
 CHANNEL:
 Material: _____ Nominal: _____ C.A. _____
 BOOT
 Head Mat'l. _____ Head Nom. _____ Head C.A. _____
 Shell Mat'l. _____ Shell Nom. _____ Shell C.A. _____
 SHELL
 Material: SA 516 70N Nominal: 34.9mm C.A. 3.2mm
 MAWP Shell Side: 9701 kPa @ Temp. 38°C
 MAWP Tube Side: _____ @ Temp. _____

CLIENT	CANADIAN NATURAL RESOURCES	
FACILITY	JEDNEY FIELD LSD b-62-E/94-G-08	
ITEM	TEST SEPARATOR	
BY: KM	DATE: 03/2009	DWG.# 45

UTS DATA

CLIENT: CANADIAN NATIONAL RESOURCES
EQUIPMENT: TEST SEPARATOR
CRN#: F-7742.1
PROV REG: A 242825
TESTED ON STREAM

FACILITY: JEDNEY GAS GATHERING
SERVICE: SOUR
LOCATION: b-62-E/94-G-08
RTD JOB #: 10.111579
REFER TO DRAWING: 45

Test Point	THICKNESS DATA				Flag	T-Min	C.A.	Nom.	Short Term	Long Term	Ave. mm/py	Retirement Date
210												
Description:	MID SHELL											
	2009	3	2012	4								
Min. Thick.	35.3		35.3		31.70	3.2	34.90	0	0			
Average:	35.5		35.5					0	0			
Analysis:												
215												
Description:	MID SHELL											
	2009	3	2012	4								
Min. Thick.	35.1		35.1		31.70	3.2	34.90	0	0			
Average:	35.3		35.3					0	0			
Analysis:												
220												
Description:	MID SHELL											
	2009	3	2012	4								
Min. Thick.	35.4		35.4		31.70	3.2	34.90	0	0			
Average:	35.6		35.6					0	0			
Analysis:												
225												
Description:	LOWER SHELL											
	2009	3	2012	4								
Min. Thick.	35.3		35.3		31.70	3.2	34.90	0	0			
Average:	35.5		35.5					0	0			
Analysis:												
230												
Description:	BOTTOM HEAD											
	2009	3	2012	4								
Min. Thick.	34.5		34.5		30.80	3.2	34.00	0	0			
Average:	35		35					0	0			
Analysis:	04/2012 MIN SCAN AT NOZZLE											
235												
Description:	1.5" 90° NOZZLE											
	2009	3	2012	4								
Min. Thick.	6.7		6.7		4.50	.6	5.10	0	0			
Average:	7		7					0	0			
Analysis:												

UTS DATA

CLIENT: CANADIAN NATIONAL RESOURCES
EQUIPMENT: TEST SEPARATOR PIPING
CRN#:
PROV REG:
TESTED ON STREAM

FACILITY: JEDNEY GAS GATHERING
SERVICE: SOUR
LOCATION: b-62-E/94-G-08
RTD JOB #: 10.111579
REFER TO DRAWING: 45

Test Point	THICKNESS DATA				Flag	T-Min	C.A.	Nom.	Short Term	Long Term	Ave. mm/py	Retirement Date
240												
Description:	3" 90° ELBOW											
	2009	3	2012	4								
Min. Thick.	7.2		7.2		6.65		1	7.60	0		0	
Average:	7.7		7.7						0		0	
Analysis:	2009/03 MIN SCAN AT U.S.W. OF SUPPORT											
245												
Description:	3" 90° ELBOW											
	2009	3	2012	4								
Min. Thick.	7.3		7.3		6.65		1	7.60	0		0	
Average:	7.7		7.7						0		0	
Analysis:	2009/03 MIN SCAN AT WELDS											
250												
Description:	4" 90° ELBOW											
	2009	3	2012	4								
Min. Thick.	7		7		6.21		.9	7.10	0		0	
Average:	7.4		7.4						0		0	
Analysis:	2009/03 MIN SCAN AT APEX											
255												
Description:	4" 45° ELBOW											
	2009	3	2012	4								
Min. Thick.	5.9		5.9		5.25		.8	6.00	0		0	
Average:	6.1		6.1						0		0	
Analysis:												