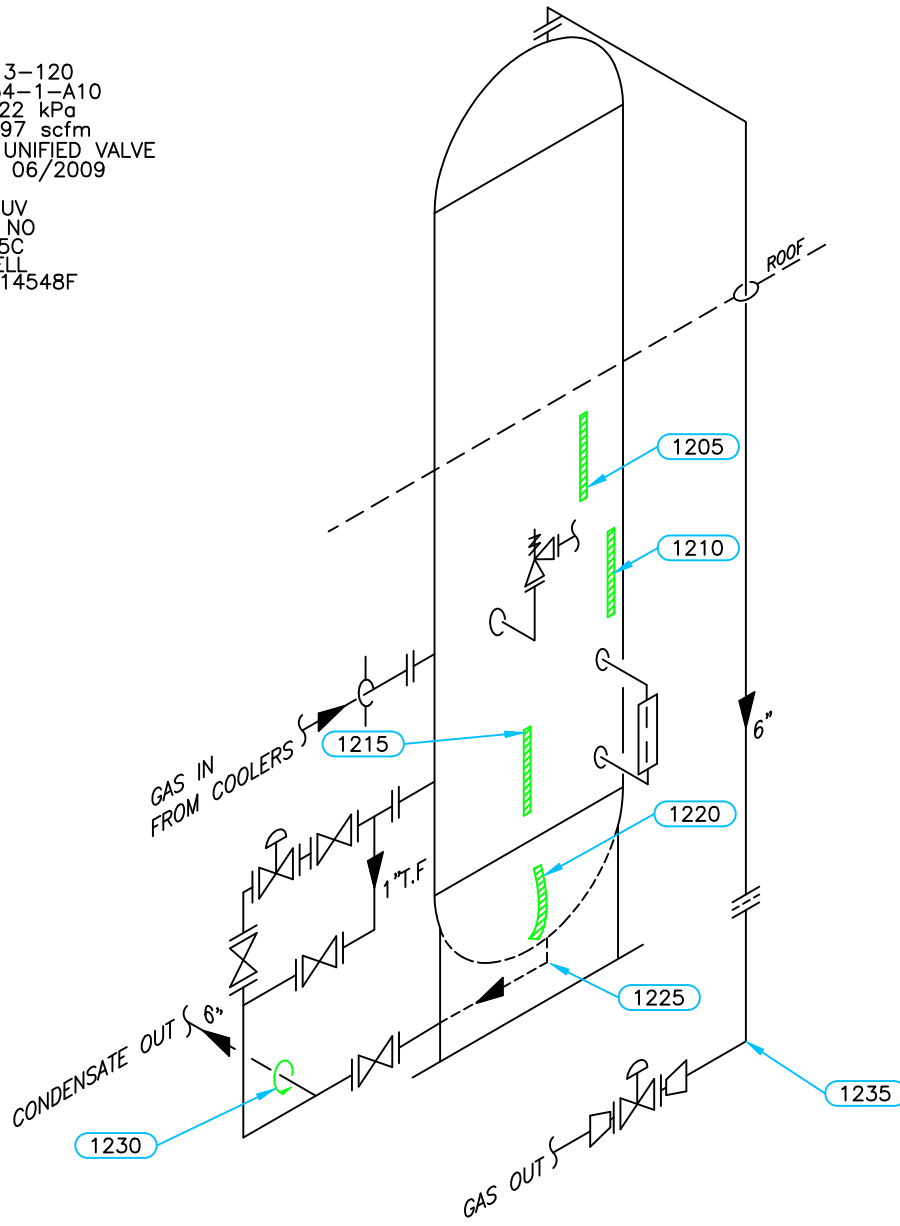


PSV DATA

MFG: FARRIS
 MODEL: 26HA13-120
 SERIAL: 452734-1-A10
 SET PRES: 9722 kPa
 CAPACITY: 21497 scfm
 SERVICED BY: UNIFIED VALVE
 SERVICE DATE: 06/2009
 SIZE: 2"x3"
 CODE STAMP: UV
 BLOCK VALVE: NO
 CRN: OG2369.5C
 LOCATION: SHELL
 TAG: G20640/14548F



Equip. No. V-510 Prov. Reg. No. Ⓐ 491894 C.R.N. R-2338.21 Serial No. 02-3854-1 Yr. Inst.
 Code/Div. ASME VIII, Div 1 Size: 3ft x 28ft Manufacturer: OPSCO ENERGY INDUSTRIES Yr. Blt. 2003
 C. Stamp: U Service: SOUR PWHT: HT Radiography: RT-1 Insulated: NO

Design & Materials Data

HEAD:
 Top Mat'l. SA 516 70N Top Nom. 36.5mm Top C.A. 3.2mm
 Btm. Mat'l. Btm. Nom. Btm. C.A.

CHANNEL:
 Material: Nominal: C.A.

BOOT
 Head Mat'l. Head Nom. Head C.A.
 Shell Mat'l. Shell Nom. Shell C.A.

SHELL
 Material: SA 516 70N Nominal: 34.9mm C.A. 3.2mm

MAWP Shell Side: 9929 kPa @ Temp. 66°C
 MAWP Tube Side: @ Temp.

| | | |
|-----------|---|----------|
| CLIENT | CANADIAN NATURAL RESOURCES | |
| FACILITY | BUCKING HORSE COMPRESSOR STATION LSD d-44-A/94-G-10 | |
| ITEM | GLYCOL CONTACTOR | |
| BY: CB/JE | DATE: 04/2012 | DWG.# 12 |

UTS DATA

CLIENT: CANADIAN NATURAL RESOURCES
EQUIPMENT: GLYCOL CONTRACTOR
CRN#: R-2338.21
PROV REG: A 491894
TESTED ON STREAM

FACILITY: BUCKING HORSE COMPRESSOR STN.
SERVICE: SOUR
LOCATION: d-44-A/94-G-10
RTD JOB #: 10.111578
REFER TO DRAWING: 12

| Test Point | THICKNESS DATA | | | | Flag | T-Min | C.A. | Nom. | Short Term | Long Term | Ave. mm/py | Retirement Date |
|--|----------------|---|------|---|-------|-------|------|-------|------------|-----------|------------|-----------------|
| 1205 | | | | | | | | | | | | |
| Description: MID SHELL | | | | | | | | | | | | |
| | 2009 | 1 | 2012 | 4 | | | | | | | | |
| Min. Thick. | 35.8 | | 35.8 | | 31.70 | | 3.2 | 34.90 | 0 | 0 | | |
| Average: | 35.8 | | 35.8 | | | | | | 0 | 0 | | |
| Analysis: | | | | | | | | | | | | |
| 1210 | | | | | | | | | | | | |
| Description: MID SHELL | | | | | | | | | | | | |
| | 2009 | 1 | 2012 | 4 | | | | | | | | |
| Min. Thick. | 35.8 | | 35.8 | | 31.70 | | 3.2 | 34.90 | 0 | 0 | | |
| Average: | 35.9 | | 35.9 | | | | | | 0 | 0 | | |
| Analysis: | | | | | | | | | | | | |
| 1215 | | | | | | | | | | | | |
| Description: LOWER SHELL | | | | | | | | | | | | |
| | 2009 | 1 | 2012 | 4 | | | | | | | | |
| Min. Thick. | 35.7 | | 35.7 | | 31.70 | | 3.2 | 34.90 | 0 | 0 | | |
| Average: | 35.8 | | 35.8 | | | | | | 0 | 0 | | |
| Analysis: | | | | | | | | | | | | |
| 1220 | | | | | | | | | | | | |
| Description: BOTTOM HEAD | | | | | | | | | | | | |
| | 2009 | 1 | 2012 | 4 | | | | | | | | |
| Min. Thick. | 37.6 | | 37.6 | | 33.30 | | 3.2 | 36.50 | 0 | 0 | | |
| Average: | 38.2 | | 38.2 | | | | | | 0 | 0 | | |
| Analysis: 2012/4 MIN SCAN AT NOZZLE. | | | | | | | | | | | | |
| 1225 | | | | | | | | | | | | |
| Description: 2" 90° NOZZLE | | | | | | | | | | | | |
| | 2009 | 1 | 2012 | 4 | | | | | | | | |
| Min. Thick. | 9.5 | | 9.5 | | 7.60 | | 1.1 | 8.70 | 0 | 0 | | |
| Average: | 9.9 | | 9.9 | | | | | | 0 | 0 | | |
| Analysis: 2012/04 MIN SCAN AT MID ELBOW/MID APEX | | | | | | | | | | | | |

UTS DATA

CLIENT: CANADIAN NATURAL RESOURCES
EQUIPMENT: GLYCOL CONTRACTOR PIPING
CRN#:
PROV REG:
TESTED ON STREAM

FACILITY: BUCKING HORSE COMPRESSOR STN.
SERVICE: SOUR
LOCATION: d-44-A/94-G-10
RTD JOB #: 10.111578
REFER TO DRAWING: 12

| Test Point | THICKNESS DATA | | | | Flag | T-Min | C.A. | Nom. | Short Term | Long Term | Ave. mm/py | Retirement Date |
|-------------|-----------------------------------|---|------|---|------|-------|------|-------|------------|-----------|------------|-----------------|
| 1230 | Description: 6" CIRC BAND | | | | | | | | | | | |
| | 2009 | 1 | 2012 | 4 | | | | | | | | |
| Min. Thick. | 11.9 | | 11.9 | | 9.63 | | 1.4 | 11.00 | 0 | 0 | | |
| Average: | 12.2 | | 12.2 | | | | | | 0 | 0 | | |
| Analysis: | 2012/04 MIN SCAN AT 3:00 POSITION | | | | | | | | | | | |

1235

| | | | | | | | | | | | | |
|---------------------------|-------------------------------|---|------|---|------|-----|---|------|-----|-----|--|--|
| Description: 1" 90° ELBOW | | | | | | | | | | | | |
| | 2009 | 1 | 2012 | 4 | | | | | | | | |
| Min. Thick. | 6.6 | | 6.2 | | 6.83 | 1.6 | 1 | 7.80 | .12 | .12 | | |
| Average: | 6.8 | | 6.6 | | | | | | .06 | .06 | | |
| Analysis: | 04/2012 RETIREMENT DATE: 2035 | | | | | | | | | | | |