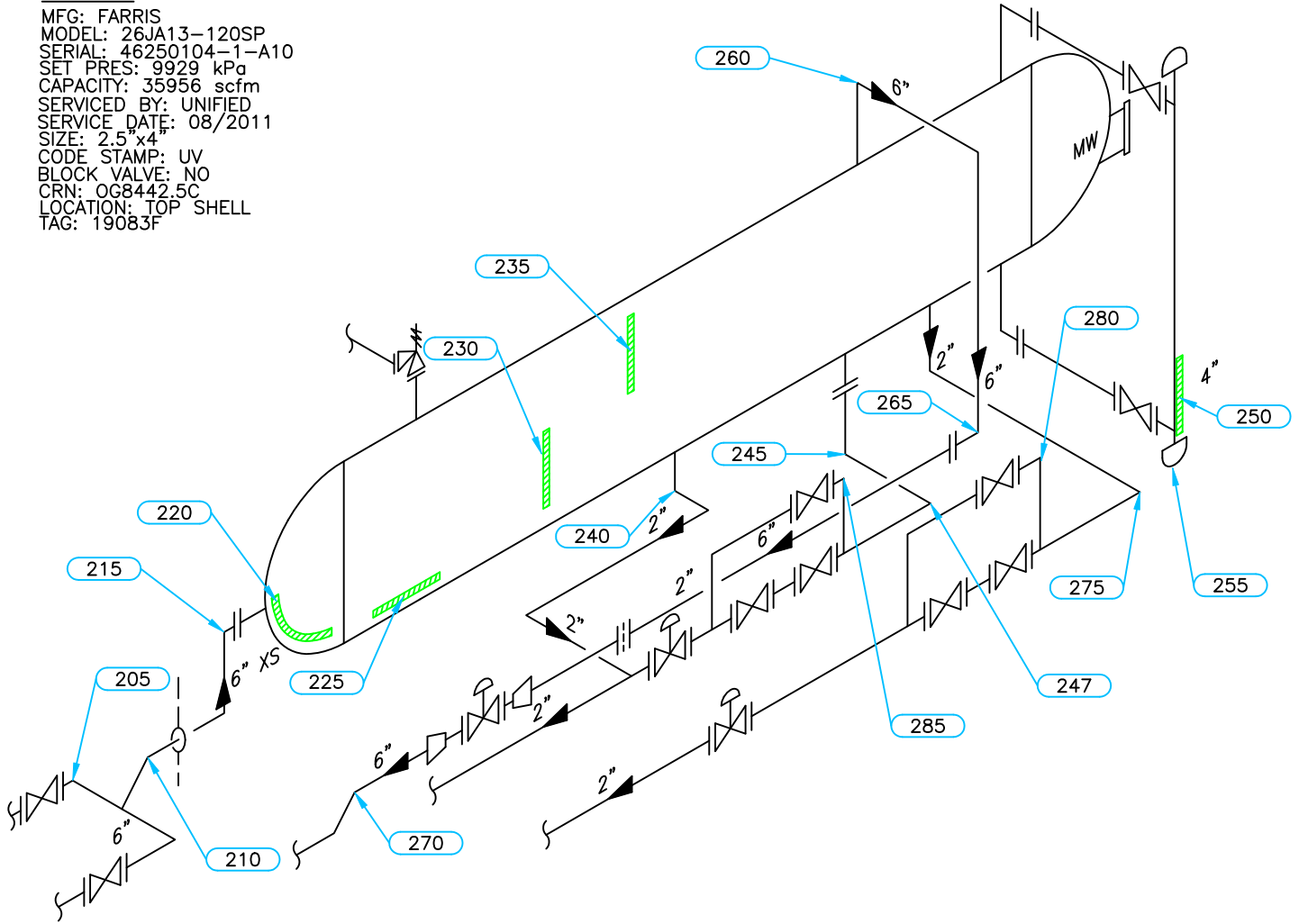


PSV DATA

MFG: FARRIS
 MODEL: 26JA13-120SP
 SERIAL: 46250104-1-A10
 SET PRES: 9929 kPa
 CAPACITY: 35956 scfm
 SERVICED BY: UNIFIED
 SERVICE DATE: 08/2011
 SIZE: 2.5" x 4"
 CODE STAMP: UV
 BLOCK VALVE: NO
 CRN: OG8442.5C
 LOCATION: TOP SHELL
 TAG: 19083F



Equip. No. _____ Prov. Reg. No. **454495** C.R.N. **L-7688.213** Serial No. **HS 9813** Yr. Inst. _____
 Code/Div. **ASME VIII, DIV1** Size: **48in x 15ft** Manufacturer: **LARSEN & D'AMICO** Yr. Blt. **2000**
 C. Stamp: **U** Service: **SWEET** PWHT: **HT** Radiography: **RT-1** Insulated: **NO**

Design & Materials Data

HEAD:
 Top Mat'l. **SA 516 70N** Top Nom. **54.9mm** Top C.A. **3.2mm**
 Btm. Mat'l. _____ Btm. Nom. _____ Btm. C.A. _____

CHANNEL:
 Material: _____ Nominal: _____ C.A. _____

BOOT
 Head Mat'l. _____ Head Nom. _____ Head C.A. _____
 Shell Mat'l. _____ Shell Nom. _____ Shell C.A. _____

SHELL
 Material: **SA 516 70N** Nominal: **57.2mm** C.A. **3.2mm**

MAWP Shell Side: **9929 kPa** @ Temp. **38°C**
 MAWP Tube Side: _____ @ Temp. _____

CLIENT	CANADIAN NATURAL RESOURCES	
FACILITY	MILLIGAN CREEK COMPRESSOR STATION LSD d-31-G/94-H-02	
ITEM	INLET SEPARATOR	
BY: KM	DATE: 12/2008	DWG.# 2

UTS DATA

CLIENT: CANADIAN NATURAL RESOURCES
EQUIPMENT: INLET SEPARATOR
CRN#: L-7688.213
PROV REG: A 454495
TESTED ON STREAM

FACILITY: MILLIGAN CREEK COMP. STA.
SERVICE: SWEET
LOCATION: d-31-G/94-H-02
RTD JOB #: 10.112227
REFER TO DRAWING: 2

Test Point	THICKNESS DATA				Flag	T-Min	C.A.	Nom.	Short Term	Long Term	Ave. mm/py	Retirement Date
220												
Description: LOWER HEAD												
	2008	12	2012	9								
Min. Thick.	58.2		55.3		51.70	42.9	3.2	54.90	.77	.77		
Average:	59		56.5						.67	.67		2025
Analysis: 09/2012 MIN SCAN AT 3in FROM START OF BAND												
225												
Description: BOTTOM SHELL												
	2008	12	2012	9								
Min. Thick.	59.7		57.1		54.00	41.8	3.2	57.20	.69	.69		
Average:	60.5		57.3						.85	.85		2030
Analysis: 09/2012 MIN SCAN AT START OF WELD												
230												
Description: LOWER SHELL												
	2008	12	2012	9								
Min. Thick.	60.3		57.2		54.00		3.2	57.20	.83	.83		
Average:	60.4		57.5						.77	.77		
Analysis:												
235												
Description: MID SHELL												
	2008	12	2012	9								
Min. Thick.	60.2		57.2		54.00		3.2	57.20	.8	.8		
Average:	60.5		57.4						.83	.83		
Analysis:												
240												
Description: 2" 90° NOZZLE												
	2008	12	2012	9								
Min. Thick.	5		5		2.30	2.1	3.2	5.50	0	0		
Average:	5.3		5.3						0	0		2051
Analysis:												
245												
Description: 2" 90° NOZZLE												
	2008	12	2012	9								
Min. Thick.	5.5		5.2		2.30		3.2	5.50	.08	.08		
Average:	5.8		5.5						.08	.08		
Analysis:												

UTS DATA

CLIENT: CANADIAN NATURAL RESOURCES
EQUIPMENT: INLET SEPARATOR PIPING
CRN#:
PROV REG:
TESTED ON STREAM

FACILITY: MILLIGAN CREEK COMP. STA.
SERVICE: SWEET
LOCATION: d-31-G/94-H-02
RTD JOB #: 10.112227
REFER TO DRAWING: 2

Test Point	THICKNESS DATA				Flag	T-Min	C.A.	Nom.	Short Term	Long Term	Ave. mm/py	Retirement Date
205												
Description: 6" 90° ELBOW												
	2008	12	2012	9								
Min. Thick.	10.8		10.8		9.63		1.4	11.00	0	0		
Average:	11		11						0	0		
Analysis:												
210												
Description: 6" 135° ELBOW												
	2008	12	2012	9								
Min. Thick.	9.7		9.7		9.63		1.4	11.00	0	0		
Average:	10		10						0	0		
Analysis:												
215												
Description: 6" 90° ELBOW												
	2008	12	2012	9								
Min. Thick.	10.6		10.6		9.63		1.4	11.00	0	0		
Average:	11		11						0	0		
Analysis: 09/2012 MIN SCAN AT END OF BAND												
247												
Description: 2" 90° ELBOW												
	2012	9										
Min. Thick.	5.3				4.81		.7	5.50				
Average:	5.5								0	0		
Analysis:												
250												
Description: 4" VERTICAL BAND												
	2008	12	2012	9								
Min. Thick.	11.2		11.2		7.53		1.1	8.60	0	0		
Average:	11.5		11.5						0	0		
Analysis:												
255												
Description: 4" END CAP												
	2012	9										
Min. Thick.	14.2				7.53		1.1	8.60				
Average:	14.8								0	0		
Analysis: 09/2012 MIN SCAN AT BACK SIDE. COULD NOT FIND PREVIOUS LOW SCAN												

UTS DATA

CLIENT: CANADIAN NATURAL RESOURCES
EQUIPMENT: INLET SEPARATOR PIPING
CRN#:
PROV REG:
TESTED ON STREAM

FACILITY: MILLIGAN CREEK COMP. STA.
SERVICE: SWEET
LOCATION: d-31-G/94-H-02
RTD JOB #: 10.112227
REFER TO DRAWING: 2

Test Point	THICKNESS DATA				Flag	T-Min	C.A.	Nom.	Short Term	Long Term	Ave. mm/py	Retirement Date
260	Description: 6" 90° ELBOW											
	2008	12	2012	9								
Min. Thick.	10.8		10.8		9.63		1.4	11.00	0		0	
Average:	11.1		11.1						0		0	
Analysis:												
265	Description: 6" 90° ELBOW											
	2008	12	2012	9								
Min. Thick.	10.9		10.9		9.63		1.4	11.00	0		0	
Average:	11.2		11.2						0		0	
Analysis:												
270	Description: 6" 45° ELBOW											
	2008	12	2012	9								
Min. Thick.	10.9		10.6		9.63		1.4	11.00	.08		.08	
Average:	11.2		10.9						.08		.08	
Analysis:												
275	Description: 2" 90° ELBOW											
	2008	12	2012	9								
Min. Thick.	5.3		5.3		4.81		.7	5.50	0		0	
Average:	5.6		5.6						0		0	
Analysis:												
280	Description: 2" 90° ELBOW											
	2008	12	2012	9								
Min. Thick.	5.5		5.5		4.81		.7	5.50	0		0	
Average:	5.7		5.7						0		0	
Analysis:												
285	Description: 2" 90° ELBOW											
	2008	12	2012	9								
Min. Thick.	5.3		5.3		4.81		.7	5.50	0		0	
Average:	5.5		5.5						0		0	
Analysis:												