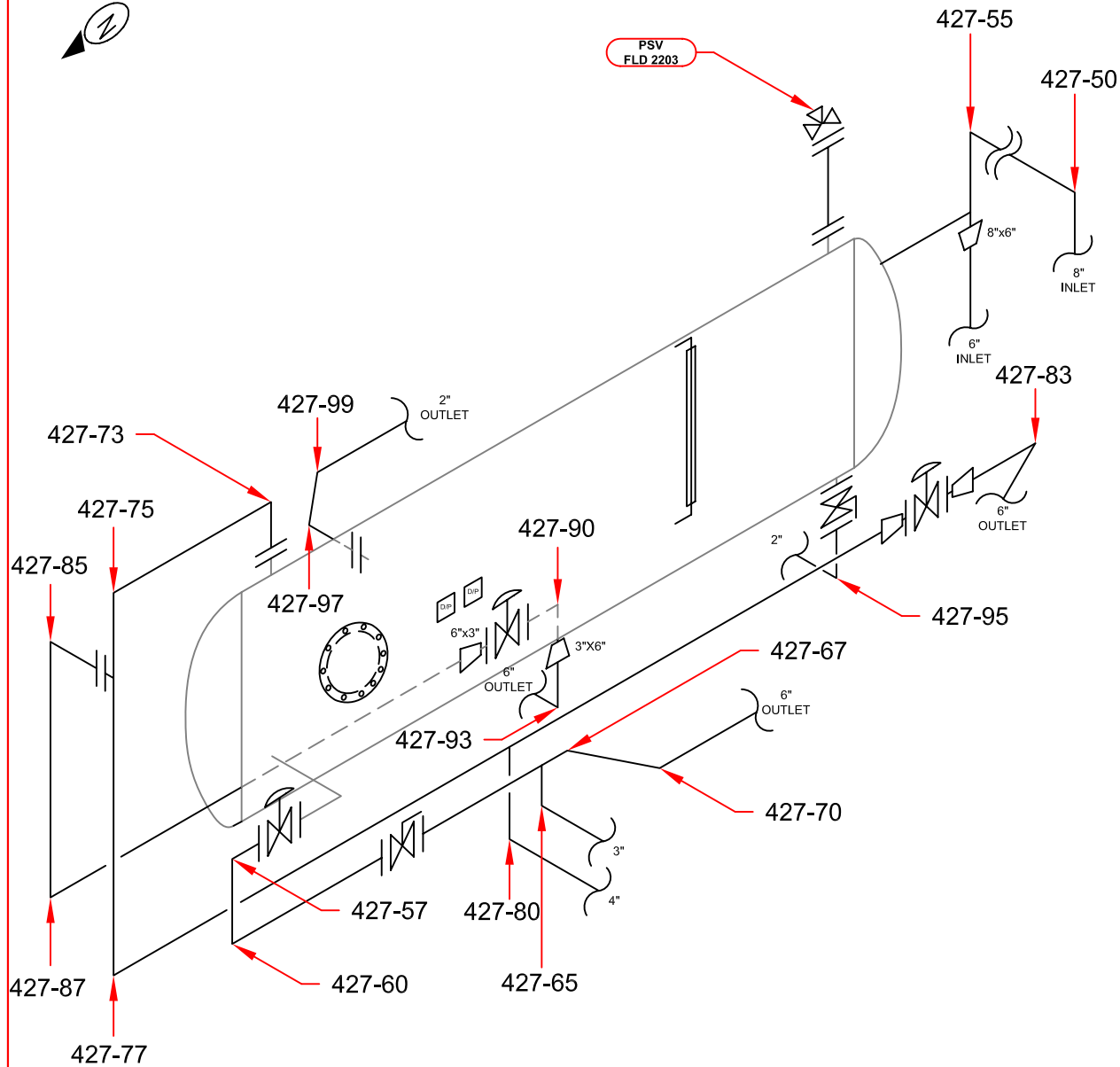


ITEM:

PRODUCTION SEPARATOR - PIPING

A0146071



STETTLER, AB (403) 742-4868
 LACOMBE, AB (403) 782-7855
 BROOKS, AB (403) 501-8029
 GRANDE PRAIRIE, AB (866) 422-9732

TECHNICIAN:

STEPHEN KEELEY
 SNT LEVEL II
 CGSB 48.9712
 LEVEL II # 12288

DATE: **02/27/10**

DWG # **427A**

CLIENT: **BARRICK ENERGY**

LSD: **10-29-071-23-W5M**

INSPECTOR : MWS

LOCATION : STURGEON LAKE NORTH

DISTRICT UNIT : FIELD

BLDG/SKID : PKG54771

PROCESS : SOUR

CODE : ASME B31.3

SPECIFICATION : AS PER ASME SE 797

TECHNIQUE : UT 1-1, REV .1

METHOD : UT CONTINUOUS / A SCAN

SURFACE COND : PAINTED

SURFACE TEMP : AMBIENT

PIPING INFORMATION

PIPING ID	SIZE	SCH	NOM	M.A.W.P. (VESSEL)	M.A.W.T. (VESSEL)	FLANGE RATING
427-50	8.625"	40	.322"	150 PSI	100 °F	150
427-55	"	"	"	"	"	"
427-57	6.625"	40	.280"	"	"	"
427-60	"	"	"	"	"	"
427-65	3.50"	40	.216"	"	"	"
427-67	6.625"	40	.280"	"	"	"
427-70	"	"	"	"	"	"
427-75	"	"	"	"	"	"
427-77	"	"	"	"	"	"
427-80	4.50"	40	.237"	"	"	"
427-83	6.625"	40	.280"	"	"	"
427-85	"	"	"	"	"	"
427-87	"	"	"	"	"	"
427-90	3.50"	40	.216"	"	"	"
427-93	6.625"	40	.280"	"	"	"
427-95	2.375"	40	.154"	"	"	"
427-97-99	2.375"	XS	.218"	"	"	"

COMMENTS:

-

PROJECT:

C40290A