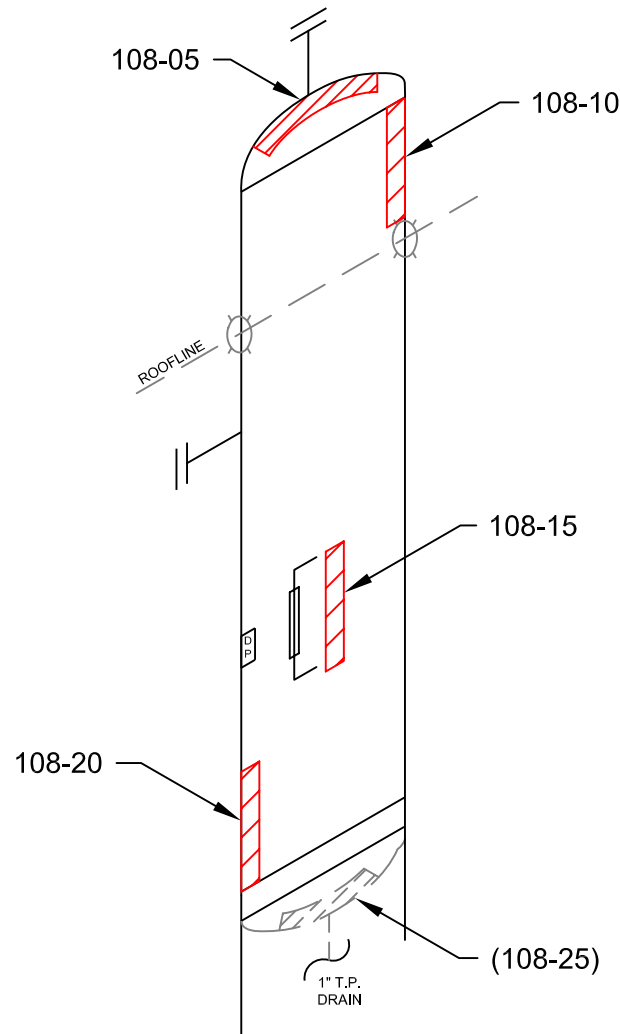


ITEM:

SEPARATOR

A 3121678



STETTLER, AB (403) 742-4868
 LACOMBE, AB (403) 782-7855
 BROOKS, AB (403) 501-8029
 GRANDE PRAIRIE, AB (866) 422-9732

TECHNICIAN:
 GLENN ALLEN
 SNT LEVEL II
 CGSB 48.9712
 LEVEL II # 9738

DATE: **05/31/10** DWG # **108**

CLIENT: **CNRL**

LSD: **10-08-083-09-W6M**

INSPECTOR : CRAIG LIBA

LOCATION : JOSEPHINE FIELD

DISTRICT UNIT : GPOU

BLDG/SKID: SKD 0494

PROCESS: SWEET

CODE: ASME SEC VIII DIV 1

SPECIFICATION: AS PER ASME SE 797

TECHNIQUE: UT-1-1, REV. 1

METHOD: UT CONTINUOUS / A SCAN

SURFACE COND: PAINTED

SURFACE TEMP: AMBIENT

VESSEL INFORMATION

VESSEL # : **A 3121678**

CRN # : M9691.2

SERIAL # : V-2285

MANUFACTURER: OPSCO

DATE BUILT: 1995

CLIENT ID / TAG: -

M.A.W.P. : 735 PSI

M.A.W.T. : 100 °F

JOINT EFFICIENCY/RT: RT 2

STRESS RELIEVED: N/A

INSULATED : N/A

MANWAY : NO

VESSEL SPECIFICATIONS

	OD	NOMINAL	MATERIAL	CA
VESSEL HEAD	36"	.875"	SA-516-70	.063"
VESSEL SHELL	36"	.875"	SA-516-70	.063"
BOOT HEAD	-	-	-	-
BOOT SHELL	-	-	-	-

COMMENTS:

PROJECT:
C10452



ULTRASONIC CORROSION SURVEY

Survey Name: **CNRL**

LSD: 10-08-083-09W6	Dwg: 108	Vessel Number: A3121678	Manufacturer: OPSCO	Survey Date: 5/31/10
District Unit: GPOU		Vessel Name: SEPARATOR	Serial Number: V-2285	Inspector: CRAIG LIBA
Location: JOSEPHINE FIELD		Year Built: 1995	Shell MAWP PSI: 735 MAWT F: 100	Process: SWEET
Skid: SKD0494		Tag Number: -	Tube MAWP PSI: 0 MAWT F: 0	Project #: C10452
		CRN: M9691.2	Vessel CA: 0.0630	

Band	Description			Readings						Year	Avg Inches	Min Inches	Nominal	CA	TMIN	Recommended Next Inspection	Recommended Retirement Date
				1	2	3	4	5	6								
108-05	Top	Head	Baseline	0.879	0.872	0.873	0.871	0.870	0.869	2007	0.872	0.869	0.8750	0.0630	0.7223	2011	2030
Shape	Ellipsoidal	Shell Side	Previous	0.879	0.872	0.873	0.871	0.870	0.869	2007	0.872	0.869	Comments-->				
OD	36		Current	0.877	0.872	0.871	0.870	0.870	0.869	2010	0.872	0.869					
Spec.	VIII Div 1									ST Loss MPY	0.000	OK					
Material	SA 516 - 70									LT Loss MPY	0.000						
108-10	Upper	Shell	Baseline	0.861	0.867	0.870	0.871	0.873	0.875	2007	0.870	0.861	0.8750	0.0630	0.7378	2011	2030
Shape	Cylindrical	Shell Side	Previous	0.861	0.867	0.870	0.871	0.873	0.875	2007	0.870	0.861	Comments-->				
OD	36		Current	0.861	0.866	0.870	0.871	0.873	0.875	2010	0.869	0.861					
Spec.	VIII Div 1									ST Loss MPY	0.000	OK					
Material	SA 516 - 70									LT Loss MPY	0.000						
108-15	Mid	Shell	Baseline	0.882	0.883	0.881	0.882	0.883	0.883	2007	0.882	0.881	0.8750	0.0630	0.7378	2011	2030
Shape	Cylindrical	Shell Side	Previous	0.882	0.883	0.881	0.882	0.883	0.883	2007	0.882	0.881	Comments-->				
OD	36		Current	0.882	0.883	0.881	0.882	0.883	0.883	2010	0.882	0.881					
Spec.	VIII Div 1									ST Loss MPY	0.000	OK					
Material	SA 516 - 70									LT Loss MPY	0.000						
108-20	Lower	Shell	Baseline	0.885	0.883	0.890	0.886	0.886	0.886	2007	0.886	0.883	0.8750	0.0630	0.7378	2011	2030
Shape	Cylindrical	Shell Side	Previous	0.885	0.883	0.890	0.886	0.886	0.886	2007	0.886	0.883	Comments-->				
OD	36		Current	0.885	0.883	0.890	0.886	0.886	0.886	2010	0.886	0.883					
Spec.	VIII Div 1									ST Loss MPY	0.000	OK					
Material	SA 516 - 70									LT Loss MPY	0.000						



ULTRASONIC CORROSION SURVEY

Survey Name: **CNRL**

LSD: 10-08-083-09W6	Dwg: 108	Vessel Number: A3121678	Manufacturer: OPSCO	Survey Date: 5/31/10
District Unit: GPOU		Vessel Name: SEPARATOR	Serial Number: V-2285	Inspector: CRAIG LIBA
Location: JOSEPHINE FIELD		Year Built: 1995	Shell MAWP PSI: 735 MAWT F: 100	Process: SWEET
Skid: SKD0494		Tag Number: -	Tube MAWP PSI: 0 MAWT F: 0	Project #: C10452
		CRN: M9691.2	Vessel CA: 0.0630	

Band	Description			Readings						Year	Avg Inches	Min Inches	Nominal	CA	TMIN	Recommended Next Inspection	Recommended Retirement Date
				1	2	3	4	5	6								
108-25	Bottom	Head	Baseline	0.894	0.884	0.893	0.882	0.878	0.878	2007	0.885	0.878	0.8750	0.0630	0.7223	2011	2030
	Shape	Ellipsoidal	Previous	0.894	0.884	0.893	0.882	0.878	0.878	2007	0.885	0.878	Comments-->				
	OD	36	Current	0.879	0.882	0.881	0.879	0.869	0.877	2010	0.878	0.869					
	Spec.	VIII Div 1								ST Loss MPY	0.003	OK					
	Material	SA 516 - 70								LT Loss MPY	0.003						
108-30		Piping	Baseline	0.326	0.314	0.315	0.311	0.312	0.312	2007	0.315	0.311	0.3370	0.0421	0.0812	2011	2030
	Shape	90° Elbow	Previous	0.326	0.314	0.315	0.311	0.312	0.312	2007	0.315	0.311	Comments-->				
	OD	4.5	Current	0.326	0.314	0.315	0.311	0.312	0.312	2010	0.315	0.311					
	Spec.	B31.3								ST Loss MPY	0.000	OK					
	Material	A 234 - WPB								LT Loss MPY	0.000						
108-35		Piping	Baseline	0.307	0.307	0.310	0.310	0.309	0.305	2007	0.308	0.305	0.3370	0.0421	0.0812	2011	2030
	Shape	90° Elbow	Previous	0.307	0.307	0.310	0.310	0.309	0.305	2007	0.308	0.305	Comments-->				
	OD	4.5	Current	0.307	0.307	0.310	0.310	0.309	0.305	2010	0.308	0.305					
	Spec.	B31.3								ST Loss MPY	0.000	OK					
	Material	A 234 - WPB								LT Loss MPY	0.000						
108-40		Piping	Baseline	0.420	0.422	0.425	0.424	0.428	0.426	2007	0.424	0.420	0.4320	0.0540	0.1195	2011	2030
	Shape	90° Elbow	Previous	0.420	0.422	0.425	0.424	0.428	0.426	2007	0.424	0.420	Comments-->				
	OD	6.625	Current	0.420	0.422	0.425	0.424	0.428	0.426	2010	0.424	0.420					
	Spec.	B31.3								ST Loss MPY	0.000	OK					
	Material	A 234 - WPB								LT Loss MPY	0.000						



ULTRASONIC CORROSION SURVEY

Survey Name: **CNRL**

LSD: 10-08-083-09W6	Dwg: 108	Vessel Number: A3121678	Manufacturer: OPSCO	Survey Date: 5/31/10
District Unit: GPOU		Vessel Name: SEPARATOR	Serial Number: V-2285	Inspector: CRAIG LIBA
Location: JOSEPHINE FIELD		Year Built: 1995	Shell MAWP PSI: 735 MAWT F: 100	Process: SWEET
Skid: SKD0494		Tag Number: -	Tube MAWP PSI: 0 MAWT F: 0	Project #: C10452
		CRN: M9691.2	Vessel CA: 0.0630	

Band	Description		Readings						Year	Avg Inches	Min Inches	Nominal	CA	TMIN	Recommended Next Inspection	Recommended Retirement Date
			1	2	3	4	5	6								
108-45	Piping	Baseline	0.281	0.282	0.273	0.276	0.274	0.271	2007	0.276	0.271	0.2800	0.0350	0.1195	2011	2030
Shape	90° Elbow	Shell Side	Previous	0.281	0.282	0.273	0.276	0.274	0.271	2007	0.276	0.271	Comments-->			
OD	6.625		Current	0.276	0.276	0.267	0.273	0.274	0.271	2010	0.273	0.267				
Spec.	B31.3			ST Loss MPY						0.001	OK					
Material	A 234 - WPB			LT Loss MPY						0.001						
108-50	Piping	Baseline	0.266	0.259	0.255	0.255	0.255	0.255	2007	0.258	0.255	0.2800	0.0350	0.1195	2011	2030
Shape	90° Elbow	Shell Side	Previous	0.266	0.259	0.255	0.255	0.255	0.255	2007	0.258	0.255	Comments-->			
OD	6.625		Current	0.266	0.259	0.255	0.255	0.255	0.255	2010	0.258	0.255				
Spec.	B31.3			ST Loss MPY						0.000	OK					
Material	A 234 - WPB			LT Loss MPY						0.000						
108-55	Piping	Baseline	0.289	0.283	0.277	0.275	0.280	0.288	2007	0.282	0.275	0.2800	0.0350	0.1195	2011	2030
Shape	90° Elbow	Shell Side	Previous	0.289	0.283	0.277	0.275	0.280	0.288	2007	0.282	0.275	Comments-->			
OD	6.625		Current	0.289	0.283	0.277	0.275	0.280	0.288	2010	0.282	0.275				
Spec.	B31.3			ST Loss MPY						0.000	OK					
Material	A 234 - WPB			LT Loss MPY						0.000						