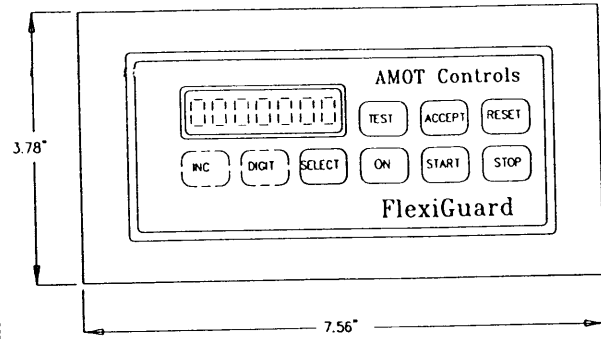


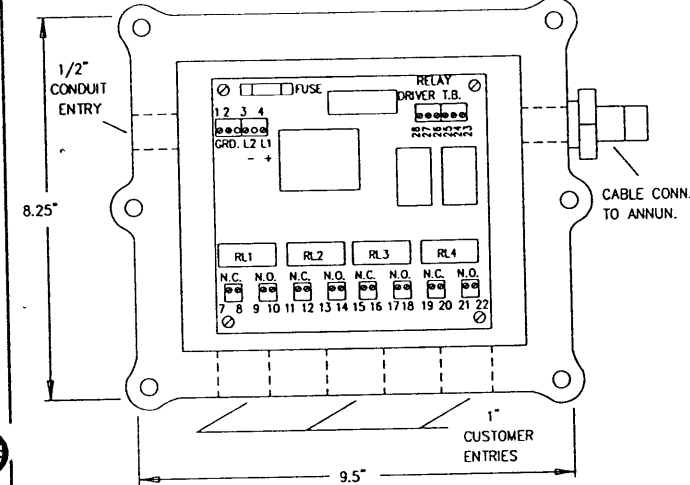
AMOT FLEXIGUARD ANNUNCIATOR

FRONT VIEW (MODEL #8603A0) - N.T.S.



AMOT FLEXIGUARD POWER SUPPLY

(MODEL # 8613C1) - N.T.S.



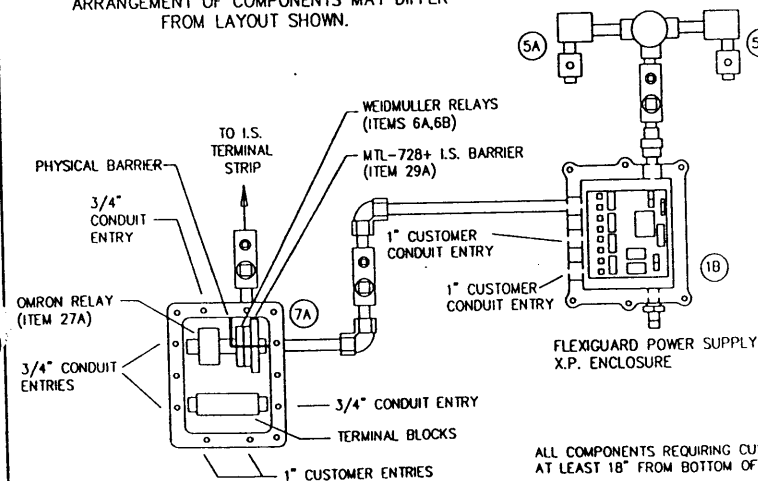
FLEXIGUARD CONFIGURATIONS

(VERSION FSTD 4.10)

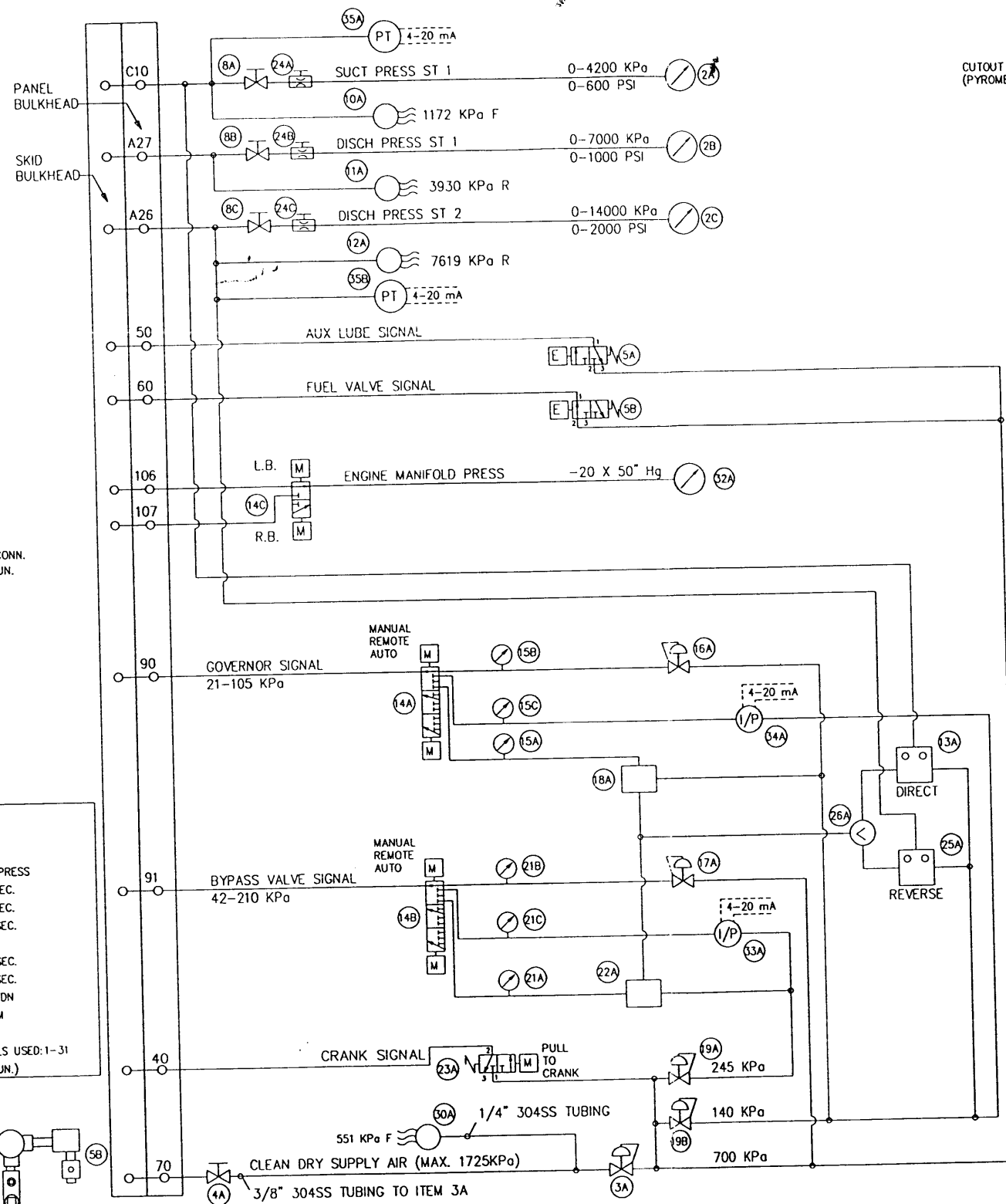
RUNTIME HOURS:
 CONFIG RUNTIME HOURS: (CURRENT HRS.)
SEQUENCE:
 CONFIG SEQUENCE: ENGINE
 CONFIG RELAY 1: AUX LUBE PUMP
 CONFIG RELAY 2: ENGINE RUNNING
 CONFIG PWR FAIL: RESET TO LOCKOUT
"F" PARAMETERS:
 CONFIG PULSES/REV 208
 CONFIG F2 OVERSPEED: 1250 RPM
 CONFIG F3 UNDERSPEED: 400 RPM
 CONFIG F4 UNDERSPEED: ALARM
 CONFIG F5 PRELUDE: TO TIME & PRESS
 CONFIG F6 PRELUDE: 120 SEC.
 CONFIG F7 PURGE: 1 SEC.
 CONFIG F8 B TIMER: 25 SEC.
 CONFIG F9 CL. B: INIT BY SPEED
 CONFIG FA IGN GRND: 3 SEC.
 CONFIG FB POSTLUBE: 180 SEC.
 CONFIG FC IGNIT INPUT FAIL: SHDN
 CONFIG FD FUEL ENABLE: 50 RPM
CHANNELS:
 CONFIG HIGHEST No. OF CHANNELS USED: 1-31
 (NOTE: ENGINE SPEED MUST EXCEED UNDERSPEED SETTING TO ACHIEVE ENGINE RUN.)

GENERAL CONDUIT LAYOUT

ARRANGEMENT OF COMPONENTS MAY DIFFER FROM LAYOUT SHOWN.



ALL COMPONENTS REQUIRING CUSTOMER TERMINATION TO BE MOUNTED AT LEAST 18" FROM BOTTOM OF THE PANEL AND HIGHER WHEN POSSIBLE.

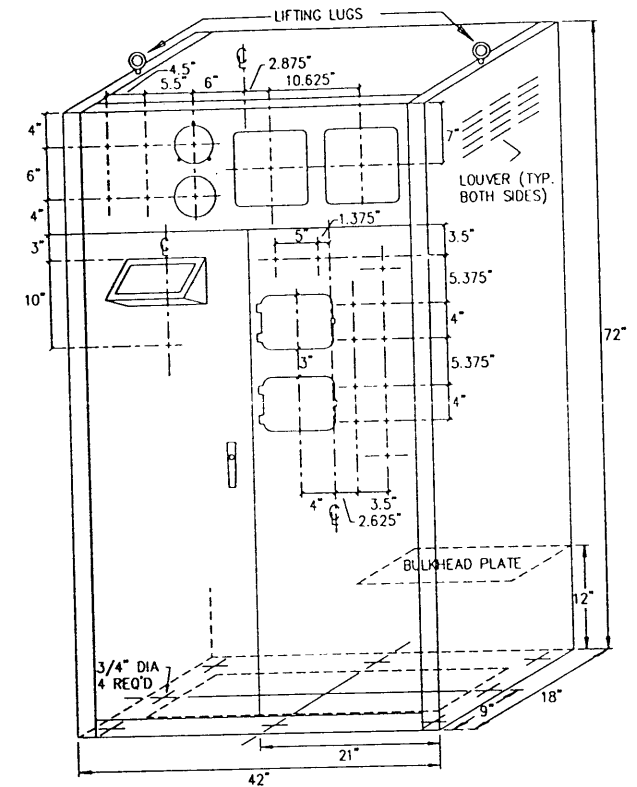
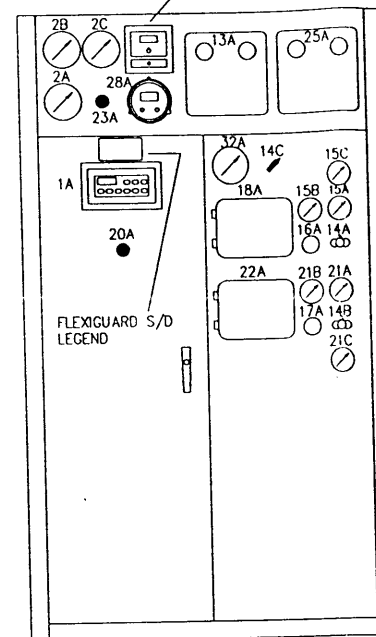


COLOUR CODE	
LINE USE	COLOUR
SPEED CONTROL PROCESS	BLUE
SUPPLY	GREEN
FUEL GAS VALVE SIGNAL	YELLOW
INTERCONNECTING	ORANGE
VENT	WHITE
TRIP	RED
PROCESS PRESSURE	METALLIC

CONSTRUCTION NOTES:

- CABINET ENCLOSED WITH DUAL FRONT ACCESS DOORS
- PAINT COLOUR: ASA-61 GREY
- CIRCUIT TUBING TO BE 1/4" COLOUR CODED POLYETHYLENE
- PROCESS TUBING TO BE 1/4" 316SS
- CIRCUIT FITTINGS TO BE 1/4" SWAGELOK CADMIUM PLATED STEEL
- PROCESS FITTING TO BE 1/4" SWAGELOK 316SS
- ALL STAINLESS STEEL LINES TO HAVE 316SS FERRULES
- ALL PNEUMATIC COMPONENTS SHOWN IN OPERATING STATE
- DRIP SHIELD OVER FLEXIGUARD ANNUNCIATOR REQUIRED
- ELECTRICAL AREA CLASSIFICATION: CLASS 1, DIV 1, GROUP C, TEMP CODE T3B

CUTOUT ONLY FOR DYNALCO TMP-100 (PYROMETER INSTALLED BY ENERFLEX)



ITEM	LAMACOD TAG	SIZE	COLOUR
2A	SUCT PRESS ST 1	1X3	WHITE
2B	DISCH PRESS ST 1	1X3	WHITE
2C	DISCH PRESS ST 2	1X3	WHITE
13A	SUCT SENSING MASTER CAPACITY CONTROLLER	1X3	WHITE
14A	GOVERNOR SIGNAL AUTO/MAN	3X3	WHITE
14B	BYPASS VALVE SIGNAL AUTO/MAN	3X3	WHITE
14C	ENGINE MANIFOLD PRESS L.B./R.B.	3X3	WHITE
15A	AUTO GOVERNOR SIGNAL	1X3	WHITE
15B	MAN GOVERNOR SIGNAL	1X3	WHITE
16A	MAN GOVERNOR CONTROL	1X3	WHITE
17A	MAN BYPASS VALVE CONTROL	1X3	WHITE
18A	AUTO GOVERNOR CONTROLLER	1X3	WHITE
20A	EMERGENCY SHUTDOWN PUSH TO ESD	1X3	RED
21A	AUTO BYPASS VALVE SIGNAL	1X3	WHITE
21B	MAN BYPASS VALVE SIGNAL	1X3	WHITE
22A	AUTO BYPASS VALVE CONTROLLER	1X3	WHITE
23A	ENGINE CRANK SIGNAL PULL TO CRANK	3X3	WHITE
25A	DISCH SENSING MASTER CAPACITY CONTROLLER	1X3	WHITE
32A	ENGINE MANIFOLD PRESS	1X3	WHITE

SPARTAN CONTROLS LTD.

ELECTRONIC COMPRESSOR PROTECTION AND CONTROL SYSTEM FOR ENERFLEX Manufacturing NORCEN/DPH ENGINEERING HAYS COMP.

LSL: 11-31-13-14 W4M JOB #96077 P.O. #612361

REV.	DESCRIPTION	BY	DATE
4	FIELD CHANGES - ADD ITEMS 15C, 21C, 33A, 34A, 35A, 35B; REVISE CAB. LAYOUT (BY JAL)	AW	97/03/12
3	SPARTAN AS BUILT	TBC	97/01/29
2	CHANGE PANEL SUPPLY TO AIR; REVISE GAUGE RANGE & SENSOR SETPOINTS; ITEMS 2A, 10A-12A	AW	97/01/09
1	ADD ITEM 32A, 14C; REVISE CABINET LAYOUT	TBC	96/10/21

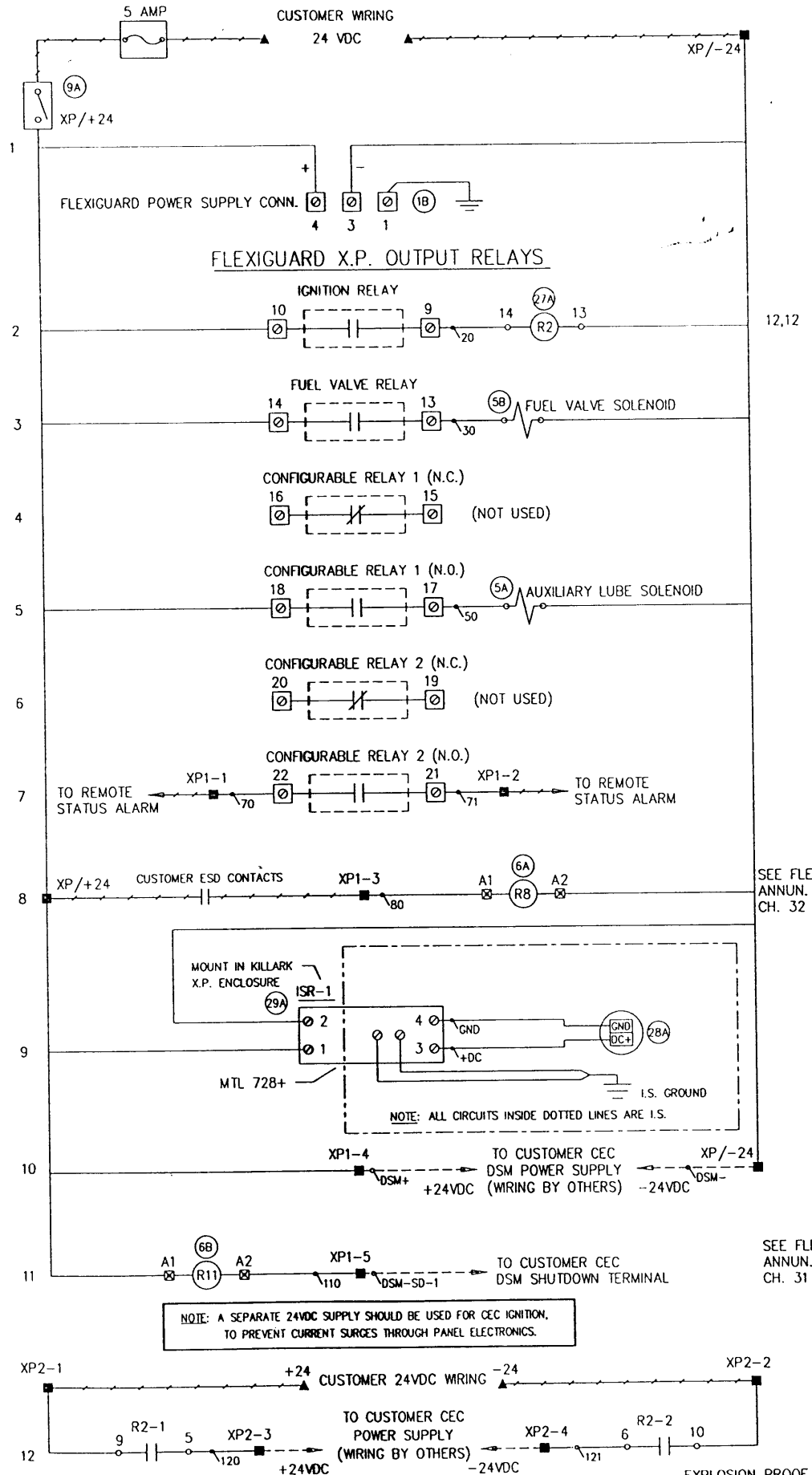
DRAWN	TBC	CHK'D	SPARTAN PROJ. COORDINATOR	SYT
DATE	96/10/07	DATE		

ENERFLEX DWG. NO. CPS96077 DWG. NO. **F-3592** SHIT 1/2 REV 4

PROCESS MEDIUM - SOUR GAS

SERIAL NO: F-3592

EXPLOSION PROOF WIRING



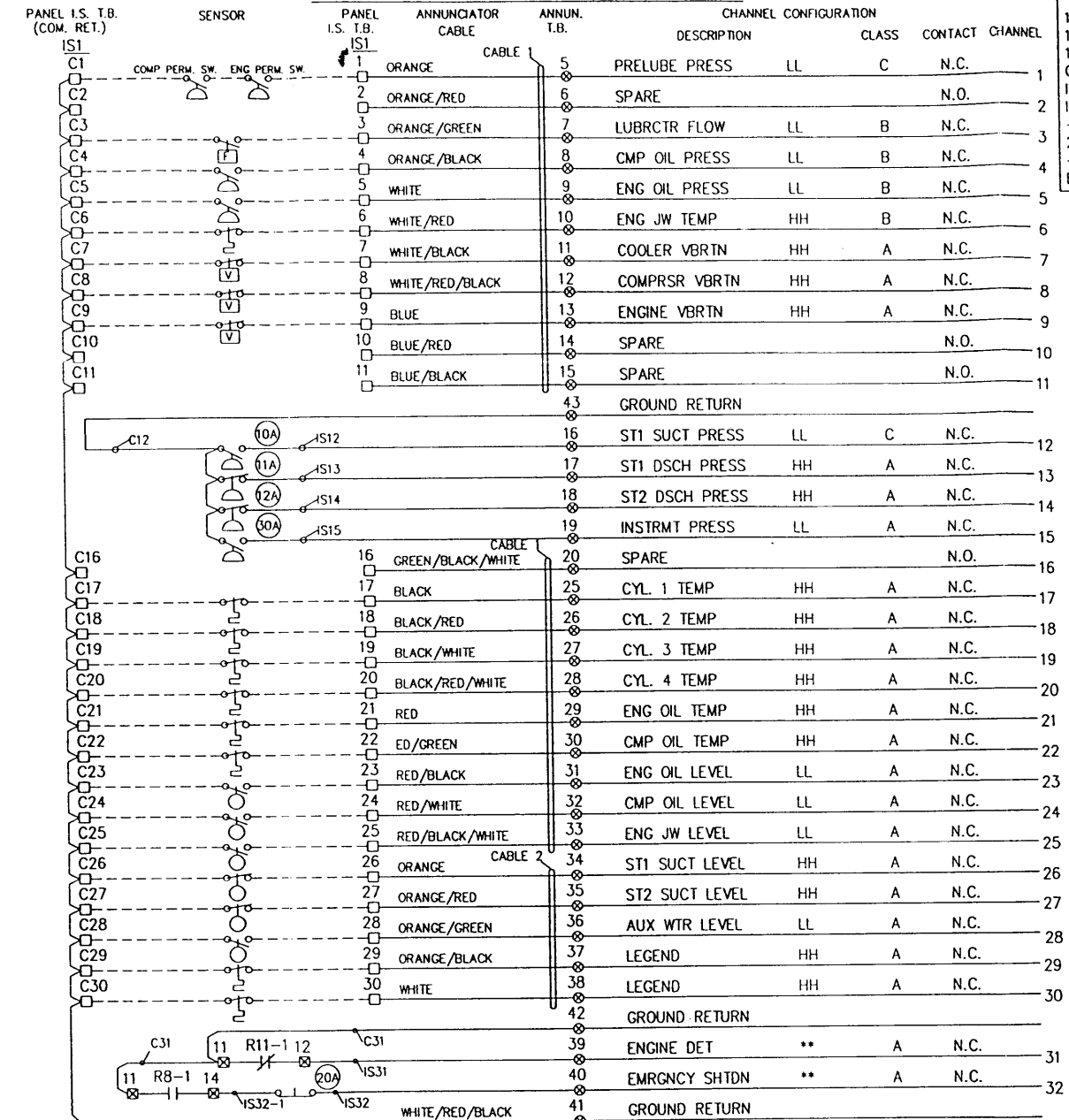
12.12

SEE FLEX. ANNUN. CH. 32

SEE FLEX. ANNUN. CH. 31

NOTE: A SEPARATE 24VDC SUPPLY SHOULD BE USED FOR CEC IGNITION, TO PREVENT CURRENT SURGES THROUGH PANEL ELECTRONICS.

FLEXIGUARD INTRINSICALLY SAFE WIRING



WIRE COLOUR CODE

110 VAC HOT	BLACK
110 VAC SWITCHED	BROWN
110 VAC NEUTRAL	WHITE
GROUND	GREEN
INTRINSIC CIRCUIT	PURPLE
INTRINSIC COMMON	YELLOW
+24 VDC	RED
24 VDC SWITCHED	ORANGE
-24 VDC	BLUE
BARRIER DC INPUT	GREY

TERMINAL & WIRE LEGEND

X.P. PANEL TERMINAL	■
I.S. PANEL TERMINAL	□
ANNUNCIATOR TERMINAL	⊗
WEIDMULLER RELAY TERMINAL	⊙
SKID TERMINAL	△
CUSTOMER TERMINAL	▲
FLEXIGUARD POWER SUPPLY & X.P. RELAY OUTPUT TERMINALS	⊚
PANEL WIRE	—
SKID WIRE	- - -
INTERCONNECT WIRE	— · —

ITEM	DESCRIPTION	RANGE: SET
36A	TRANSPAK T773 SPEED TRANSMITTER	BY CUSTOMER
35A-B	ROSEMOUNT B1151G9E22L5L6 TRANSMITTER	0-21000 KPa
34A	FISHER 546-84 1/P TRANSDUCER (4-20mA)	21-105 KPa
33A	FISHER 546-85 1/P TRANSDUCER (4-20mA)	42-210 KPa
32A	WKA 233.53/-20 X 50" Hg 4" SS L.F. GAUGE	-20" X 50" Hg
31A-B	FISHER MTG-129 MOUNTING BRACKET	SET 551 KPa F
30A	CCS DUAL SNAP 6900G18 PRESS SWITCH	SET 551 KPa F
29A	MTL-728+ INTRINSIC SAFE BARRIER	
28A	ALTRONIC DPH-1309-J TEMP SWITCH GAUGE	-18°C-800°C
27A	OMRON MY4-24 VDC C/W PYF14A BASE	BY S.M.L.
26A	MOORE 61FE LO SELECT RELAY	
25A	FISHER 4150KR-225 CONT 0-14000 KPa SSBT	21-105 KPa
24A-C	WKA 910.12/9091262 PULSATION DAMPENER	316SS
23A	AMOT 4057D020F1 TYPE CB	
22A	FISHER 2506-3 RECEIVER CONT 21-105KPa IN/42-210KPa OUT	
21A-C	WKA 111.10/600 2 1/2" GAUGE	0-420 KPa
20A	TM ZB2BT4 MAINTAINED RED PB C/W ZB2B102	BY S.M.L.
19A-B	FISHER 67AFR-362 REGULATOR	35-245 KPa
18A	FISHER 2506-1 RECEIVER CONT.	21-105 KPa
17A	FISHER 67-450 REG C/W 2185L012	35-245 KPa
16A	FISHER 67-450 REG C/W 2185L011	35-245 KPa
15A-C	WKA 111.10/300 2 1/2" GAUGE	0-210 KPa
14C	WHITEY B-42X54-KN SELECTOR	
14A-B	CONANT 5-WAY SELECTOR	
13A	FISHER 4150K-218 CONT 0-4200 KPa	21-105 KPa
12A	CCS DUAL SNAP 6900GZE22 PRESS SWITCH	SET 7619 KPa R
11A	CCS DUAL SNAP 6900GZE20 PRESS SWITCH	SET 3930 KPa R
10A	CCS DUAL SNAP 6900GZE18 PRESS SWITCH	SET 1172 KPa F
9A	WELAND WK4TKM/U DISCONNECT SWITCH	BY S.M.L.
8A-C	ISOLATION VALVE - 1/4" 316SS	BY S.M.L.
7A	KILLARK XB684 X.P. ENCLOSURE	BY S.M.L.
6A-B	WEIDMULLER 11002.1 RELAY-24VDC	BY S.M.L.
5A-B	ASCO EF8320G202-24 SOLENOID	24 VDC
4A	ISOLATION VALVE - 1/2" CARBON STEEL	BY S.M.L.
3A	FISHER 64-202 REG C/W 11B8579X042	245-700 KPa
2A-C	WKA 233.53 4" S.S. LIQUID FILLED GAUGE	
1A,B,C,D	10-AMOT 8017A3-AA ELECTROMAGNETIC SENSOR SHIPPED LOOSE	
I.S. TB	1C-AMOT FLEXIGUARD 64048X CABLE ASS'Y	
X.P. TB	1B-AMOT FLEXIGUARD 8613C1-24VDC P.S.	
	1A-AMOT FLEXIGUARD 8603A0 ANNUNCIATOR	
	AMOT FLEXIGUARD SYSTEM 10639X801	
	WELAND WK4/DEU TERM. BLK.(QTY. 28)	BY S.M.L.
	WELAND WK4/U TERM. BLK.(QTY. 12)	BY S.M.L.

GAUGE RANGE-DUAL

2A	0-4200 KPa
2B	0-7000 KPa
2C	0-14000 KPa

PROCESS MEDIUM - SOUR GAS

SERIAL NO:F-3592

SPARTAN CONTROLS LTD.

ELECTRONIC COMPRESSOR PROTECTION AND CONTROL SYSTEM FOR ENERFLEX Manufacturing

NORCEN/DPH ENGINEERING HAYS COMP.

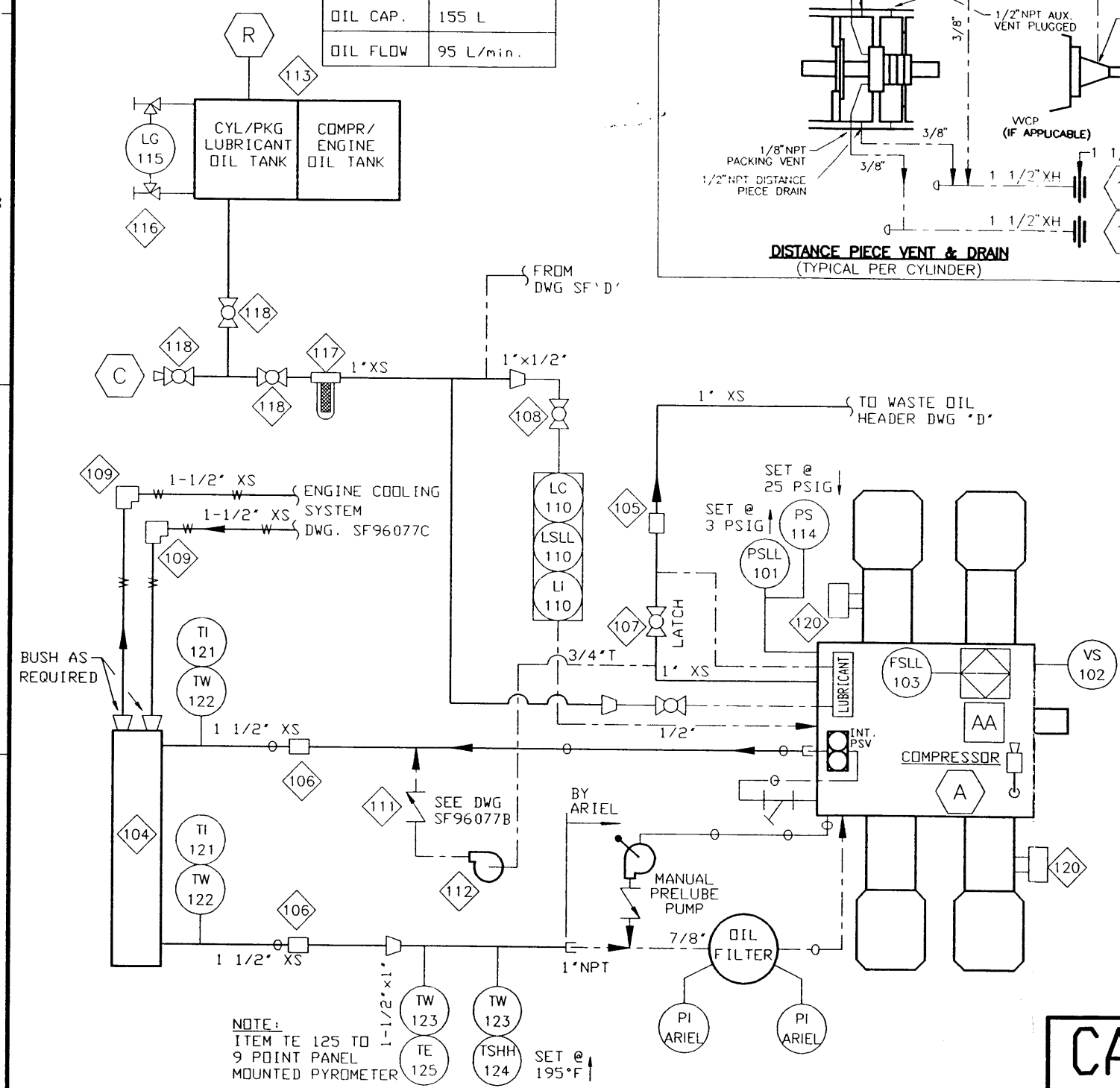
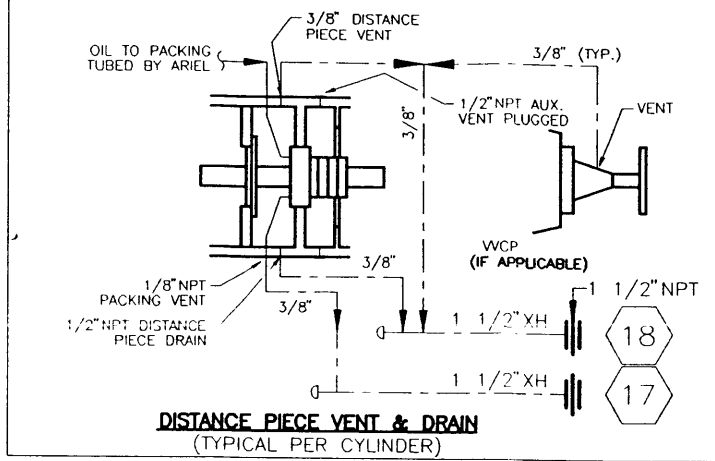
LSD:11-31-13-14 W4M JOB #96077 P.O.#612361

DRAWN	TBC	CHK'D		SPARTAN PROJ. COORDINATOR	SYT
DATE	96/10/07	DATE			
ENERFLEX Dwg. NO.	CPS96077	Dwg. NO.	F-3592	SHT	REV 4
				2/2	

NOTE:

1. SEE THE GENERAL ARRANGEMENT DRAWING FOR THE CORRECT CYLINDER ORIENTATION.

OIL CAP.	155 L
OIL FLOW	95 L/min.



NOTE:
ITEM TE 125 TO
9 POINT PANEL
MOUNTED PYROMETER
TW 123 TSHH SET @
TE 125 TSHH SET @
195°F

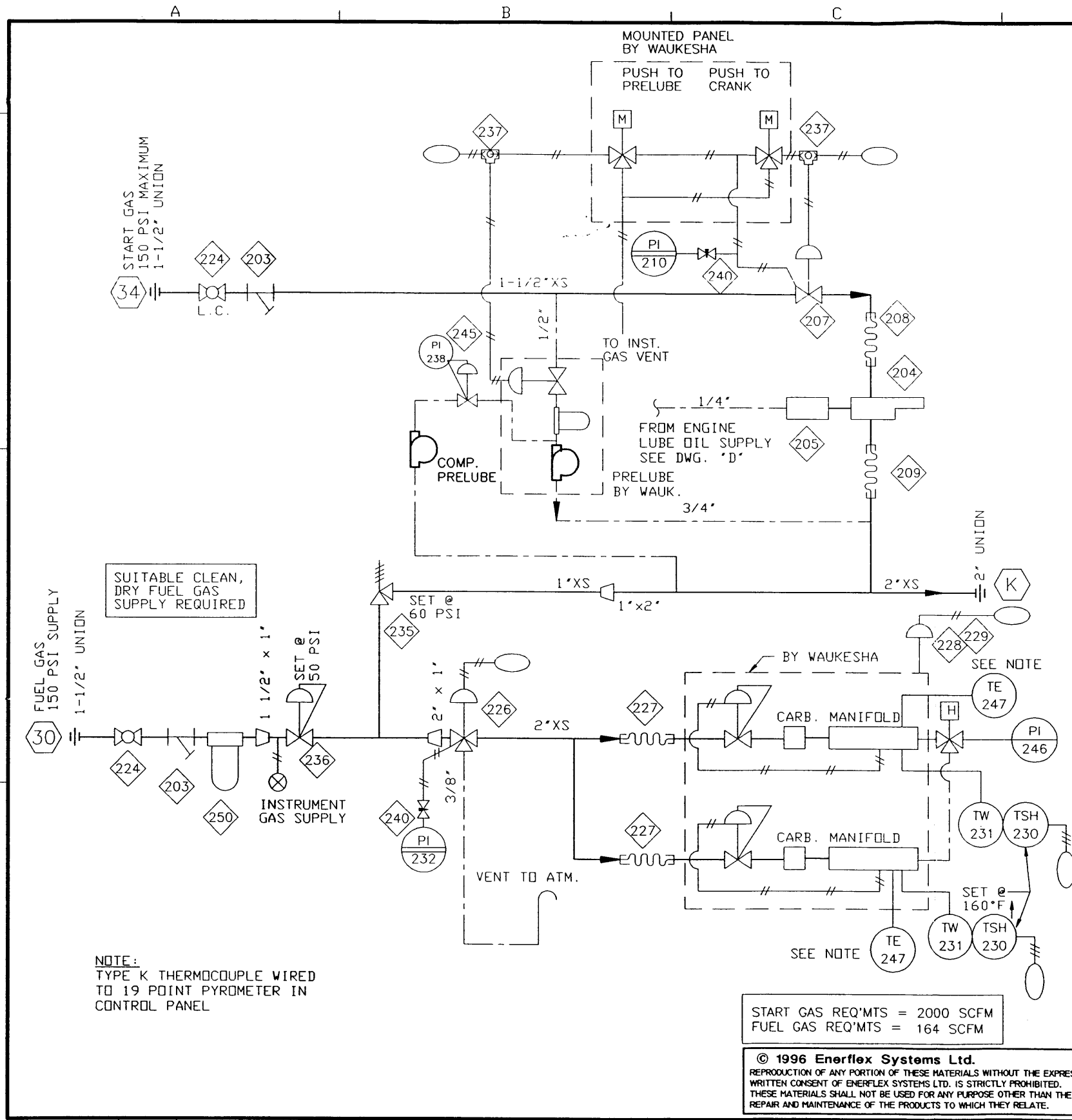
CAD
MAKE NO REVISIONS
TO THIS REPRODUCIBLE

BILL OF MATERIAL

ITEM	QTY.	CODE No.	DESCRIPTION
101	1	BTE-69G12	PRES SW, CCS 6900G12, 500 MWP 3-20R, 1-18F, GP, alum.
102	1	BMU-VS2	VIB SW, MURPHY VS-2 ELECTRIC WI MANUAL RESET
103	2	AAR-527E	LUBE NO FLOW SD, TRABON 527-100-180, SUPPLIED BY ARIEL
104	1	AAR-K1024	ARIEL LUBE OIL COOLER, K-1024, SUPPLIED BY ARIEL
105	1	BDR-C10	SLEEVE COUPLING, 1" DRESSER STYLE 90 STRAIGHT
106	2	BDR-C14	SLEEVE COUPLING, 1 1/2" DRESSER STYLE 90 STRAIGHT
107	1	BNI-T5610	BALL VALVE, NIBCO T560-CS-R-25 1" WI LATCHING HANDLE
108	2	BGR-391104	BALL VALVE, GRINNELL 1/2" NPT, FIG 3911, 2000 WDG, RP, CS
109	2	BDR-C20	SLEEVE COUPLING, 1-1/2" DRESSER STYLE 90, STRAIGHT
110	1	BKE-LCE9	LEVEL CONTROLLER WI SWITCH, KENCO LCE-9, C.S.A., XP
111	1	BNE-48T06	PISTON CHECK VALVE, 3/4" NPT NEWCO 48TFS2 800# WDG CS
112	1	BIR-AR0666	DIAPHRAGM PUMP, ARD CPQ2187A 1" NPT, ALUMINUM C/W SS VENT
113	1	BEN-200P4	OIL TANK, COOLER MT, DWG. 20-101 C/W STAND DWG 20-102
114	1	BTE-69GZ14	PRES SW, CCS 6900GZ14, 500 MWP 9-75R, 3-69F, GP, SS
115	1	XSIGHTGLASS	GAUGE GLASS, CLEAR ACRYLIC TUBING, BY SHOP
116	1	BDA-1TCN	SET TUBULAR GAUGE VLV, #1TC DANIEL, SWEET, 1/2" NPT, CS, 500#
117	1	BBA-BF914	FILTER, BALDWIN BF914 1" NPT WI BF915 ELEMENT
118	3	BNI-T5610	BALL VALVE, NIBCO T560-CS-R-25 1" WI LATCHING HANDLE
120	2	ZNPN	BICRA EXPLOSION PROOF DOOR 4A
121	2	BTR-30251	TEMPERATURE INDICATOR, TREND 33025, 2 1/2" STEM, BACK MOUNT, 3" DIAL, DUAL SCALE 0-250 DEG. F
122	2	BTW-S062	THERMOWELL, 1/2" X 3/4" NPTM X 2-1/2" LONG 316SS, U = 1"
123	2	BTE-TW7525S	T'WELL, CCS, 3/4", 2 1/2" U, 316SS #6509TW34050416, 2" T LAG
124	1	BTE-69TUE16	TEMP SW, CCS 6900TUE16, 400F XP 185-315R 165-308F SS 5' cap
125	1	NPN	THERMOCOUPLE TYPE K ALLTEMP MODEL A9-14-K24-USS-6 C/W 1010 JACK

AS-BUILT
DATE MAR 31 1997


FILENAME:	ISSUE#:	<p>ENERFLEX SYSTEMS LTD.</p>	CUSTOMER:	3 AS BUILT	DKW 97-03-26	ORIG DWN BY: DRD	TITLE:
LAST DRAWING SAVE DATE: 97/01/10 12:03			<p>NORCEN ENERGY (TAG C-6150) (HAYS GAS PLANT-1996 EXPANSION)</p> <p>JOB No.: 96077</p>	2 FOR CONSTRUCTION	DRD 96-09-23	DATE: 96-08-30	SCHEMATIC COMPRESSOR EQUIPMENT & CONTROLS ARIEL JGH/4
				1 FOR APPROVAL	DRD 96-09-12	APPR'D BY: <i>[Signature]</i>	DWG. SF96077A
				0 PRELIMINARY	DRD 96-08-30	DATE: 97-03-26	OPER'N#: 20
				Rev. Description	By Date		

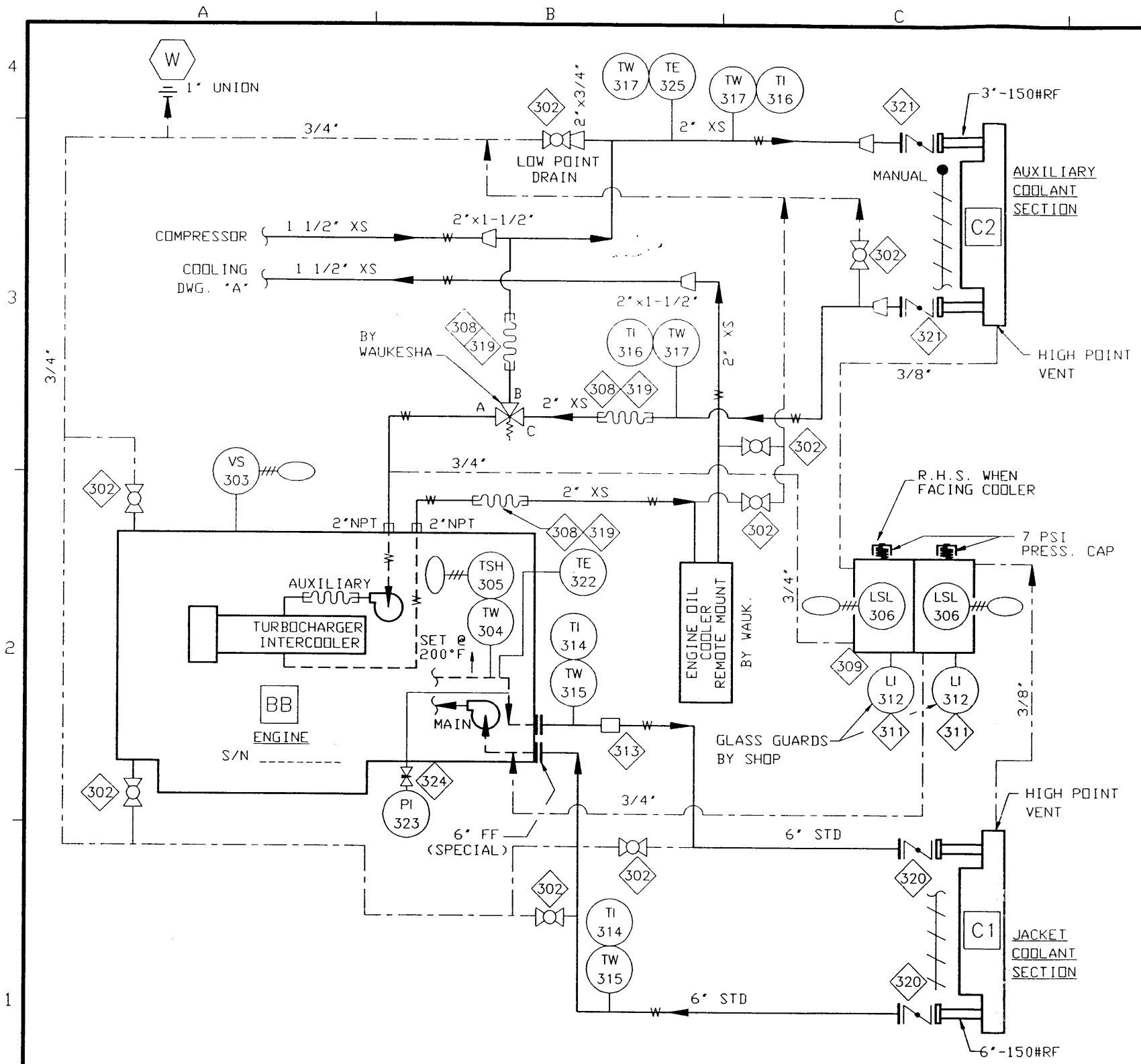


BILL OF MATERIAL

ITEM	QTY.	CODE No.	DESCRIPTION
203	2	BST-YSCS14	Y STRAINER, ALTA YS 600, CS, 1-1/2"NPT 1480 PSIG SS SCREEN
204	1	BIR-810	STARTER, IR SS810GB03R31-31A
205	1	BIR-HDL2	LUBRICATOR, I.R. HDL-2
207	1	BIR-SRV150	GAS VALVE, 1-1/2" IR SRV-150
208	1	BBH-1412	BRAIDED STEEL HOSE, 1-1/2" NPTM ENDS, 12' LONG
209	1	BBH-2012	BRAIDED STEEL HOSE, 2" NPTM ENDS, 12' LONG
210	1	BWI-B2S030	PI, WIKA 233.53, 2-1/2" LF 316 BT/STK BM 1/4" DUAL 0-300 PSI
224	2	BWK-13614	BALL VALVE, WKM B136-CS-02-CS HL 1-1/2" RP WI LATCH HANDLE
226	1	BAM-4418C3	GAS VALVE, AMDT 4418D6A6C0, 2" NPT, 3 WAY
227	2	BBH-2012	BRAIDED STEEL HOSE, 2" NPTM ENDS, 12' LONG
228	1	BFI-51320	ACTUATOR, FISHER 513-13/YL, 3/4" TRIM 3-15 PSI
229	1	BEN-22101	BRACKET FOR FISHER 513-20 GOV ACTUATOR, DWG 22-101
230	2	BTE-69TU147	TEMP SW, CCS6900TU14-7001GP 80-205R,60-198F,10' CAP
231	2	BTE-TW7545	T'WELL, CCS, 3/4", 4 1/2" U, 304 SS 113-35-1
232	1	BWI-P2S010	PI, WIKA 233.53, 2-1/2" LF 316 BT/STK PM 1/4" DUAL 0-100 PSI
235	1	BFI-R180560	PSV, 1 INCH FISHER 1805-1 CI 20-125 PSI SET @ 60#
236	1	BFI-627250	REG. 1" FISHER 627-491 DI 1/4" DR 35-80# SPR
237	2	BFE-668	SHUTTLE VALVE, FESTO 668-2 DS- 1/4" B, WI NPT ADAPTORS (9396
238	1	BWI-CB2C010	PI, WIKA 111.10, 2" BM 1/4" DUAL 0-100 PSI
240	2	BWH-2NVS	NEEDLE VALVE, WHITEY S-1VS4, 1/4" TBG CS
245	1	BFI-06790	REG, 1/4" FISHER #67AFR-226, 35-100 PSI
246	1	ZNPN	MANIFOLD PRESSURE IND. c/w SELECTOR SWITCH, BY SPARTAN, IN PANEL
247	2	ZNPN	K-TYPE THERMOCOUPLES, BY WAUKESHA
250	1	BHE-385AP	GAS FILTER, HEADLINE, 385A-S453P 1.5' C/W SS PLUG & ELEMENTS

AS-BUILT
DATE MAR 31 1997

FILENAME:	ISSUE#:	 ENERFLEX SYSTEMS LTD.	CUSTOMER:	3 AS BUILT	DKW 97-03-26	ORIG DWN BY: DRD	TITLE:
LAST DRAWING SAVE DATE:			NORCEN ENERGY (TAG C-6150) (HAYS GAS PLANT-1996 EXPANSION)	2 FOR CONSTRUCTION	DRD 96-09-23	DATE: 96-08-30	FUEL & START GAS SCHEMATIC ENGINE EQUIPMENT & CONTROLS WAUKESHA L-VHP-GL SERIES
97/01/10 10:07			JOB No.: 96077	1 FOR APPROVAL	DRD 96-09-12	APPR'D BY: <i>[Signature]</i>	DWG: SF96077B
				0 PRELIMINARY	DRD 96-08-30	DATE: 97-07-26	OPER'N#: 22
				Rev. Description	By Date		



NOTE:
 ITEM TE 322 TO 19 POINT PANEL MOUNTED PYROMETER.
 ITEM TE 325 TO 9 POINT PANEL MOUNTED PYROMETER.

© 1996 Enerflex Systems Ltd.
 REPRODUCTION OF ANY PORTION OF THESE MATERIALS WITHOUT THE EXPRESS WRITTEN CONSENT OF ENERFLEX SYSTEMS LTD. IS STRICTLY PROHIBITED. THESE MATERIALS SHALL NOT BE USED FOR ANY PURPOSE OTHER THAN THE REPAIR AND MAINTENANCE OF THE PRODUCTS TO WHICH THEY RELATE.

FILENAME: _____
 ISSUE#: _____
 LAST DRAWING SAVE DATE: 97/01/10 10:07



CUSTOMER:
NORCEN ENERGY (TAG C-6150)
 (HAYS GAS PLANT-1996 EXPANSION)
 JOB No.: 96077

3	AS BUILT	DKW	97-03-26
2	FOR CONSTRUCTION	DRD	96-09-23
1	FOR APPROVAL	DRD	96-09-12
0	PRELIMINARY	DRD	96-08-30
Rev.	Description	By	Date

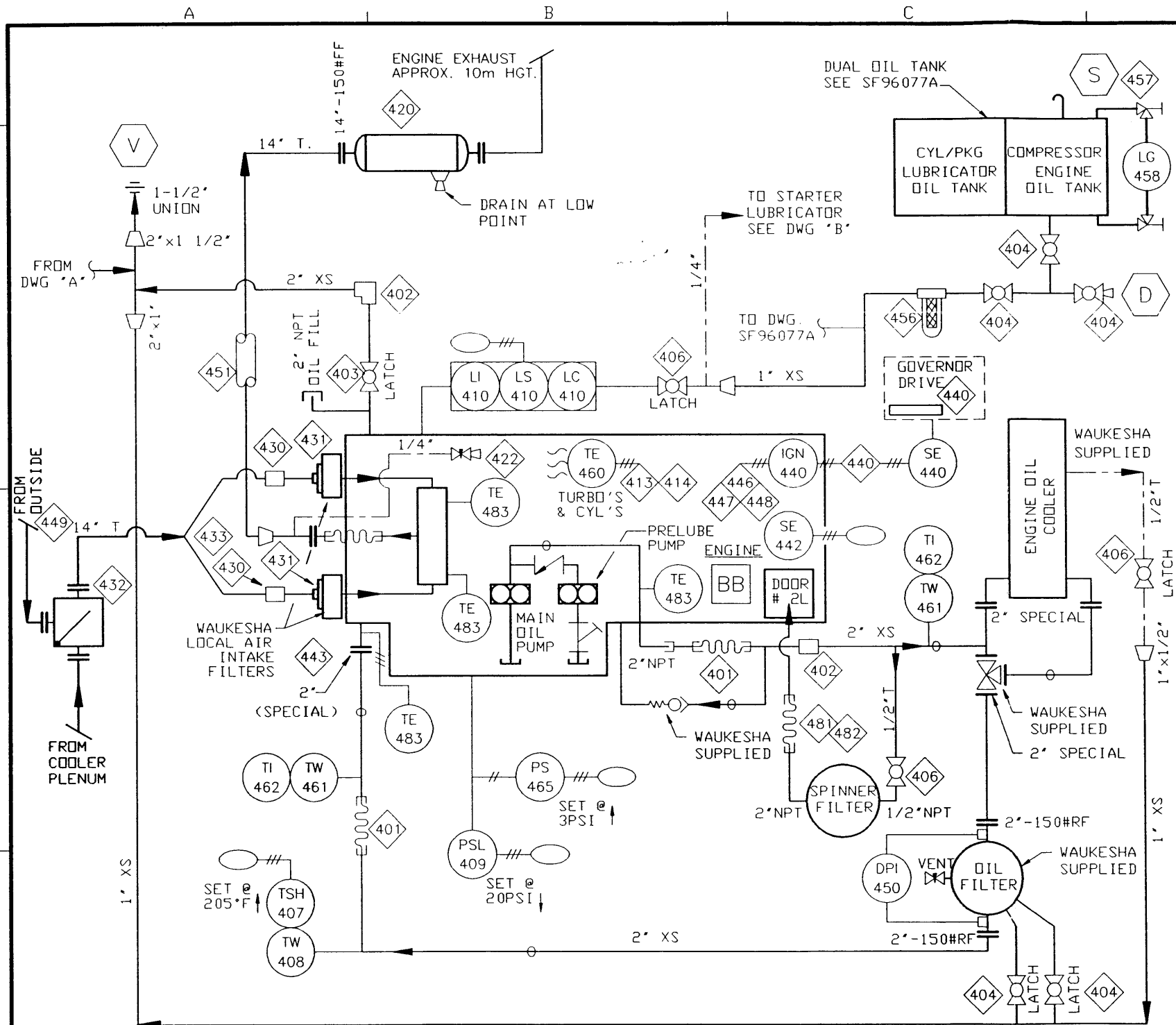
ORIG DWN BY: DRD
 DATE: 96-08-30
 APPR'D BY: *[Signature]*
 DATE: 97-07-26

TITLE: **COOLING SYSTEM SCHEMATIC**
ENGINE EQUIPMENT & CONTROLS
 WAUKESHA L-VHP-GL SERIES
 DWG. SF96077C OPER# 24

BILL OF MATERIAL

ITEM	QTY.	CODE No.	DESCRIPTION
302	8	BGR-391106	BALL VALVE, 3/4" NPT GRINNELL FIG.3911 2000# WDG RF CS
303	1	BMU-VS2	MURPHY VS-2 ELECTRIC VIBRATION SWITCH C/W MANUAL RESET
304	1	BTE-TW7525	T'WELL, CCS 3/4", 2 1/2" U, 304SS #6509TTW3425204 C/W 2" T LAG
305	1	BTE-69TU167	TEMP SW, CCS, 6900TU16-7001 GP 185-315R, 165-308F, SS, 10' CAP
306	2	BMU-L12	LEV SW, MURPHY L-1200 2" XP WI BODYGLAS FLOAT
308	3	CPH-2BPH	2" PETROLEUM HOSE, MWP, 150 PSI, BLUE
309	1	BEN-24404	SURGE TANK, TWO COMPARTMENTS 209L, AS PER DWG 24-404 c/w 2" NPT LEVEL SWITCH CONNECTIONS
311	2	BDA-1TCN	SET TUBULAR GAUGE VLV, #1TC DANIEL, SWEET, 1/2" NPT, CS, 500#
312	2	XSIGHTGLASS	GAUGE GLASS, CLEAR ACRYLIC TUBING
313	1	BDR-C60	SLEEVE COUPLING, 6" DRESSER STYLE 38
314	2	BTR-30401	TI, TREND 33040 4" STEM BM 3" D DUAL 0-250 DEG. F
315	2	BTW-064	THERMOWELL, 1/2" X 3/4" NPTM X 4" LONG 304SS
316	2	BTR-30251	TI, TREND 33025 2-1/2" STEM BM 3" D DUAL 0-250 DEG. F
317	3	BTW-062	THERMOWELL, 1/2" X 3/4" NPTM X 2-1/2" LONG 304SS
319	6	CPH-2MS	2" BOSS MALLEABLE IRON MALE STEM FOR PETROLEUM HOSE MS-26
320	2	NPN	WATTS 6" 150# BF04-121-25 BUTTERFLY VALVE
321	2	BWA-31BF04	WATTS 3" 150# BF04-121-25 BUTTERFLY VALVE
322	1	NPN	THERMOCOUPLE TYPE K SUPPLIED BY WAUKESHA
323	1	BWI-B4S006	PI, WIKA 233.53, 4" LF 316 BT/STK BM 1/2" DUAL 0-60 PSI
324	1	BWH-2NVS	NEEDLE VALVE, WHITEY S-1VS4, 1/4" TBG CS
325	1	NPN	THERMOCOUPLE TYPE J ALLTEMP MODEL A9-14-J24-USS-6, c/w 1010 JACK

AS-BUILT
 DATE MAR 31 1997



NOTE:
ITEM TE 483 TO 19 POINT PANEL MOUNTED PYROMETER.

BILL OF MATERIAL

ITEM	QTY.	CODE No.	DESCRIPTION
401	2	BBH-2012	BRAIDED STEEL HOSE, 2" NPTM ENDS, 12' LONG 2" DRESSER
402	2	BDR-C20L	SLEEVE COUPLING, 2" DRESSER STYLE 90 90EL
403	1	BNI-T5620	BALL VALVE, NPT NIBCO T560-CS R-25 2" RP WI LATCHING HANDLE
404	3	BNI-T5610	BALL VALVE, NIBCO T560-CS-R-25 1" WI LATCHING HANDLE
406	3	BNI-T5604	BALL VALVE, NIBCO T560-CS-R-25 1/2" WI LATCHING HANDLE
407	1	BTE-69TU167	TEMP SW, CCS, 6900TU16-7001 GP 185-315R, 165-308F SS, 10' CAP
408	1	BTE-TW7525	T'WELL, CCS 3/4", 2 1/2" U, 304SS # 6509TW34050404 C/W 2" T LUG
409	1	BTE-69G14	PRES SW, CCS 6900G14, 500 MWP 6-75R, 2-71F, GP, alum.
410	1	RKF-1CF17	IFVFL CONTROLLER WI SWITCH, KENCO LCE-17 CSA XP
413	1	BWH-INSTALL	INSTALLATION CHARGES FOR PYROMETER HARNESS
414	1	BWH-LGL25	PYRO HARNESS, 18 POINT FOR L-SERIES GL, 25' LEADS
420	1	NPN	14" M-51-SPECIAL MAXIM SILENCER
422	1	BWH-2NVS	NEEDLE VALVE, WHITEY S-1VS4, 1/4" TBG CS
430	2	BDD-P11H10	RUBBER HUMP HOSE CONNECTOR, DONALDSON P11-1414, 10" STRAPS-
431	2	BEN-26303	AIR FILTER ADAPTOR, 10" OD, AS PER DWG 26-303
432	1	BEN-26402	WARM AIR DRAW DAMPER, 14", AS PER DWG 26-402
433	1	BEN-26502	Y MANIFOLD, 10"x14", AS PER DWG 26-502
440	1	ZNPN	CEC IGNITION MODULE, CABLE, TIM'N DISC & SENSOR, WAUK. SUP
442	1	ZNPN4-0401	MAGNETIC PICK-UP AMDT 8017A3 (BY SPARTAN IN CONTROL PANEL)
443	1	BEN-26601	OIL STRAINER ADAPTER BLOCK FOR 12 CYL VHP, AS PER DWG 26-601
446	12	BCH-VHP	SPARK PLUGS, CHAMPION, RTM77N ALL VHP MODELS
447	12	BAL-VHP	COILS, ALTRONICS, 591-011B ALL VHP MODELS
448	1	BPA-VHPL	HARNESS, PAMCO, C1W1001 L VHP 12 CYL
449	1	BLS-LT14	AIR LINE TERM, 16 G ST 14" D. WITH BIRD SCREEN
450	1	BMI-AA30	DIFF PRES GAUGE, MID-WEST 120-AA-10-50-30, 0-30 PSID
451	1	BEX-CF	EXH INS, ALUM CLAD CERAM FIBRE BATT WI GALV LNR & AIR RING
456	1	BBA-BF914	OIL FILTER, BALDWIN BF914 1" NPT WI BF915 ELEMENT
457	1	BDA-1TCN	SET TUBULAR GAUGE VLV, #1TC DANIEL, SWEET, 1/2" NPT, CS, 500#
458	1	XSIGHTGLASS	GAUGE GLASS, CLEAR ACRYLIC TUBING, BY SHOP
460	12	ZNPN	K-TYPE THERMOCOUPLES, BY WAUKESHA
461	2	BTW-062	THERMOWELL, 1/2" X 3/4" NPTM X 2-1/2" LONG 304SS U = 1"
462	2	BTR-30251	TI, TREND 33025 2-1/2" STEM BM 3" D DUAL 0-250 DEG. F
465	1	BTE-69G12	PRES SW, CCS 6900G12, 500 MWP 3-20R, 1-18F, GP, alum.
481	1	CPH-2BPH	2" PETROLEUM HOSE, MAWP 150 PSI, BLUE
482	2	CPH-2MS	2" BOSS MALLEABLE IRON MALE STEM FOR PETROLEUM HOSE MS-26
483	4	NPN	THERMOCOUPLE TYPE K BY WAUKESHA

AS-BUILT

DATE MAR 31 1997

© 1996 Enerflex Systems Ltd.
REPRODUCTION OF ANY PORTION OF THESE MATERIALS WITHOUT THE EXPRESS WRITTEN CONSENT OF ENERFLEX SYSTEMS LTD. IS STRICTLY PROHIBITED. THESE MATERIALS SHALL NOT BE USED FOR ANY PURPOSE OTHER THAN THE REPAIR AND MAINTENANCE OF THE PRODUCTS TO WHICH THEY RELATE.

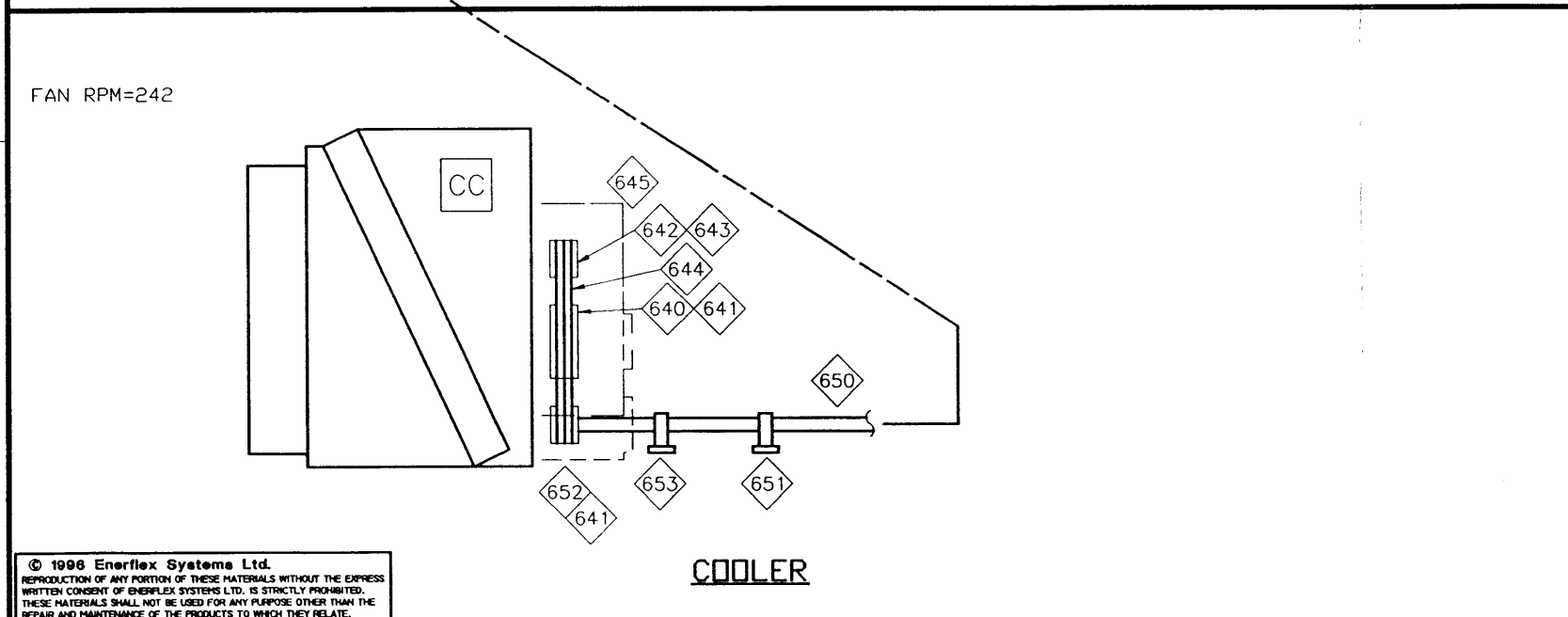
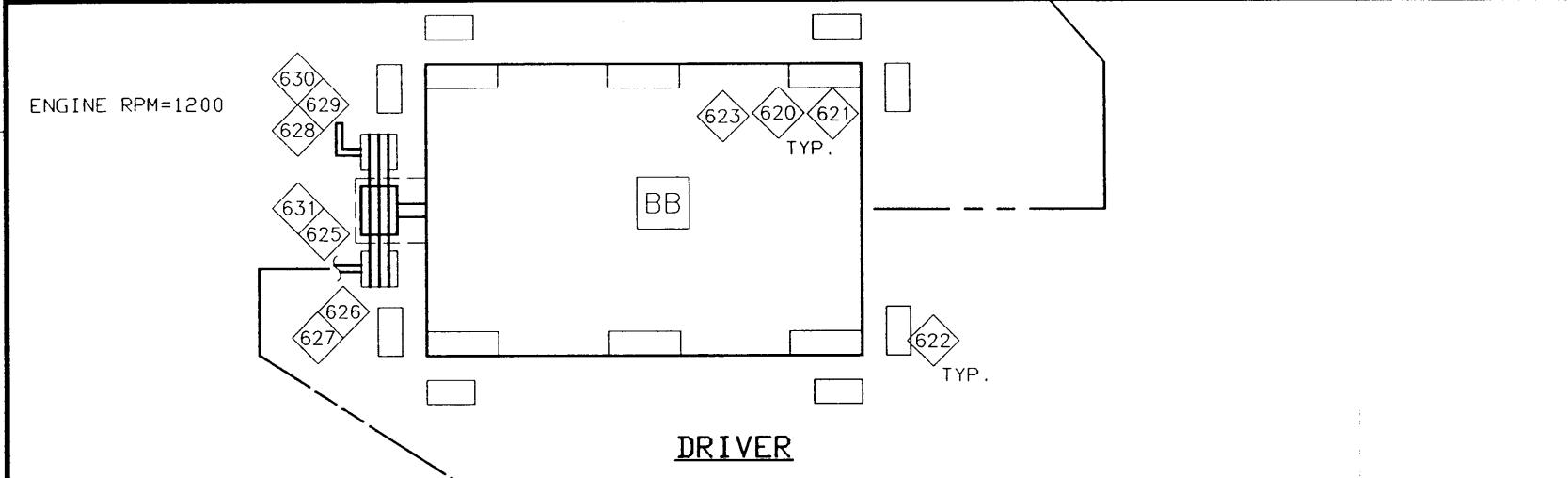
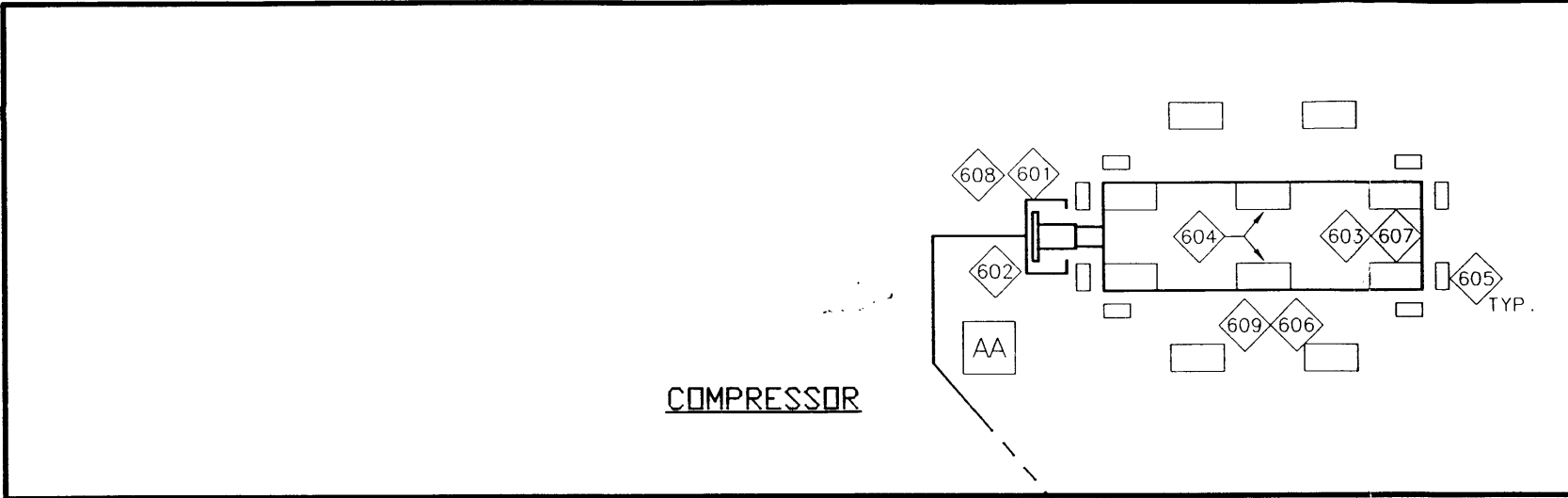
FILENAME: _____ ISSUE#: _____
ENERFLEX
 LAST DRAWING SAVE DATE: 97/01/10 10:08
 ENERFLEX SYSTEMS LTD.

CUSTOMER:
NORCEN ENERGY (TAG C-6150)
(HAYS GAS PLANT-1996 EXPANSION)
 JOB No.: 96077

Rev.	Description	By	Date
3	AS BUILT	DKV	97-03-26
2	FOR CONSTRUCTION	DRO	96-09-23
1	FOR APPROVAL	DRO	96-09-12
0	PRELIMINARY	DRO	96-09-03

ORIG DWN BY:	DATE:
DRO	96-09-03
APPR'D BY:	DATE:
<i>JA</i>	97-03-26

TITLE: **OIL, IGN., AIR & EXHAUST SCHEMATIC**
ENGINE EQUIPMENT & CONTROLS
WAUKESHA L-VHP-GL SERIES
 DWG. SF96077D OPER# 26



© 1998 Enerflex Systems Ltd.
 REPRODUCTION OF ANY PORTION OF THESE MATERIALS WITHOUT THE EXPRESS
 WRITTEN CONSENT OF ENERFLEX SYSTEMS LTD. IS STRICTLY PROHIBITED.
 THESE MATERIALS SHALL NOT BE USED FOR ANY PURPOSE OTHER THAN THE
 REPAIR AND MAINTENANCE OF THE PRODUCTS TO WHICH THEY RELATE.

FILENAME: _____ ISSUE#: _____
 LAST DRAWING SAVE DATE:
 97/01/10 10:08



CUSTOMER:
 NORCEN ENERGY (TAG C-6150)
 (HAYS GAS PLANT-1996 EXPANSION)
 JOB No.: 96077

3	AS BUILT	DKW	97-03-26
2	FOR CONSTRUCTION	DRD	96-09-23
1	FOR APPROVAL	DRD	96-09-12
0	PRELIMINARY	DRD	96-09-03
Rev.	Description	By	Date

BILL OF MATERIAL

ITEM	QTY.	CODE No.	DESCRIPTION
601	1	BFD-6022H	CPLG, FORMFLEX 60-22 HD-FSH WI BORED HUB
602	1	BEN-28700	COUPLING GUARD, ALUMINUM, BUILT TO SUIT
603	4	BEN-28201	MOUNTING BLOCKS, COMPRSSR, CORNER AS PER DWG 28-201
604	2	BEN-28202	MOUNTING BLOCKS, COMPRSSR, CENTER AS PER DWG 28-202
605	8	BEN-28401	3/4" JACKING BLOCK AS PER DWG 28-401
606	4	AAR-GSH	JGH GUIDE SUPPORT, PN D-1524
607	6	BEN-28302	GROUT BOX AS PER DWG 28-302
608	1	EHB-5	HUB BORE: 4.996" +0/- .001" KEY WAY: 1-1/4" X 5/8"
609	4	BEN-28302	GROUT BOX, COMPRESSOR PER DWG 28.302
ITEM	QTY.	CODE No.	DESCRIPTION
620	1	BEN-28101	MOUNTING BLOCKS, ENGINE, DWG 28-101
621	1	BEN-28601	SHIMS, ENGINE DWG 28-601
622	8	BEN-28401	3/4" JACKING BLOCK AS PER DWG 28-401
623	6	BEN-28301	GROUT BOX, ENGINE, AS PER DWG 28-301
625	1	BVB-4CN	V-BELT, SET OF (4) C SECTION (SHOP TO SPEC LENGTH) C101
626	1	BBR-4C150R	SHEAVE, BROWNING 4C150R WITH R1 BUSHING
627	1	BBR-7R1	BUSHING, 2 15/16" R1 BROWNING
628	1	BBR-4C60Q	SHEAVE, BROWNING 4C60Q
629	1	BBR-IDQ2	IDLER BUSHING, BROWNING IDQ2 X 1
630	1	BBR-DATQ1	BROWNING DATQ-1 DRIVE TIGHTENER
631	1	BEN-28800	BELT GUARD, BUILD TO SUIT
ITEM	QTY.	CODE No.	DESCRIPTION
640	1	BBR-4C300	SHEAVE, BROWNING 4C300R WITH R1 BUSHING
641	1	BBR-7R1	BUSHING, 2 15/16" R1 BROWNING
642	1	BBR-4C96	SHEAVE, BROWNING 4C96R WITH R1 BUSHING
643	1	BBR-4R1	BUSHING, 2-3/16" R1 BROWNING
644	1	BVB-4CN	V-BELT, SET OF (4) C SECTION (5600)
645	1	BEN-28800	BELT GUARD, BUILT TO SUIT
650	1	BEN-28805	2 15/16" JACKSHAFT AS PER DWG #28-805 x 69" LONG
651	1	NPN	PILLOW BLOCK, BROWNING PB970NE X 2 15/16"
652	1	BBR-4C106	SHEAVE, 4C106R BROWNING USED WITH R1 BUSHING
653	1	NPN	PILLOW BLOCK, BROWNING PB970N X 2 15/16" EXPANSION

AS-BUILT
 DATE: MAR 31 1997

TITLE: DRIVE TRAIN EQUIPMENT	ORIG DWN BY: DRD	DATE: 96-09-03	APPR'D BY: [Signature]	DATE: 97-01-26	DWG. SF96077F	OPER'N#: 28
---------------------------------	------------------	----------------	------------------------	----------------	---------------	-------------