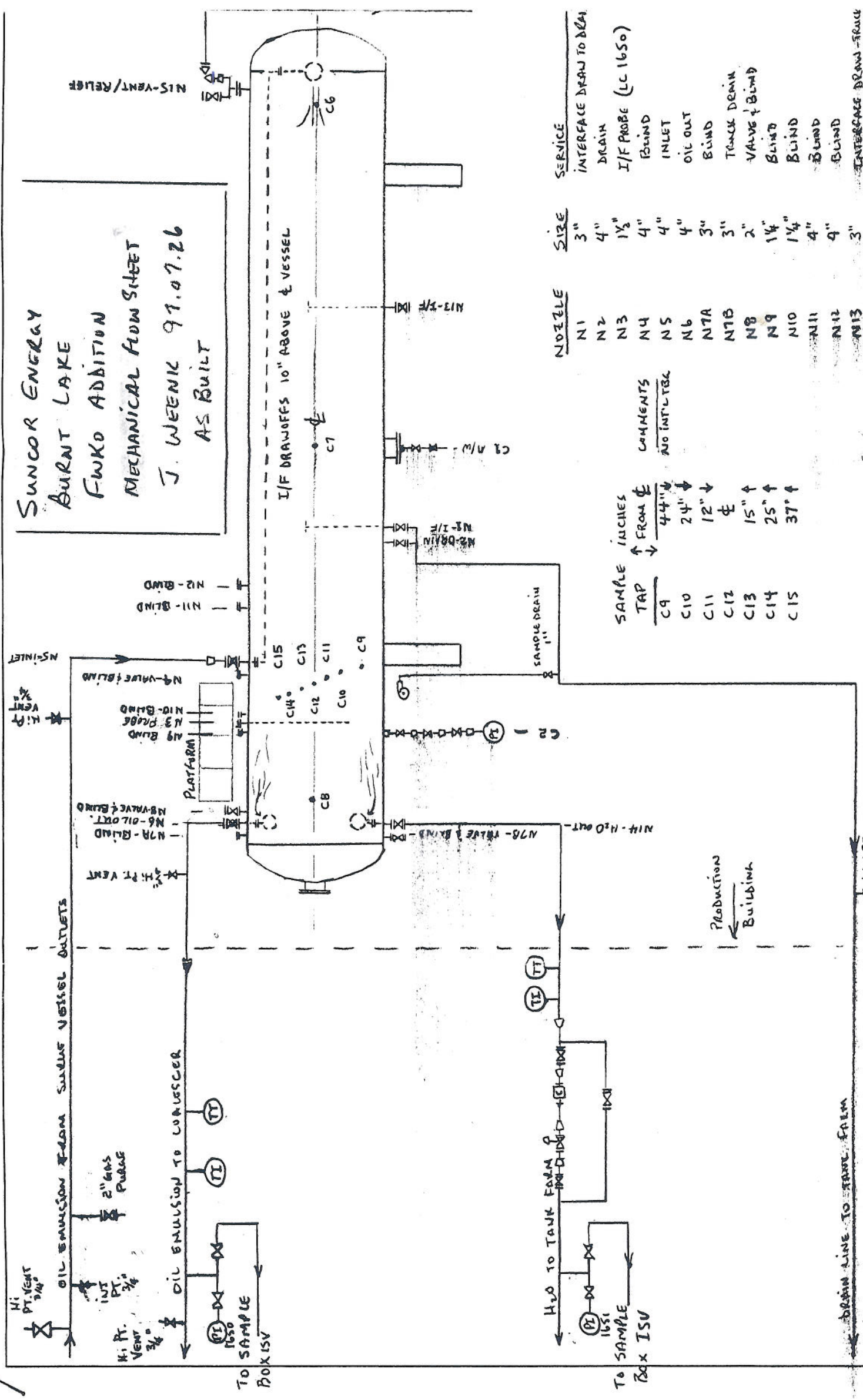


SUNCOR ENERGY
BURNT LAKE
FWKO ADDITION
MECHANICAL FLOW SHEET
J. WEENIK 97.07.26
AS BUILT



NOZZLE	SIZE	SERVICE
N1	3"	INTERFACE DRAIN TO DRAIN
N2	4"	DRAIN
N3	1 1/2"	I/F PROBE (LC 1650)
N4	4"	BLIND
N5	4"	INLET
N6	4"	OIL OUT
N7A	3"	BLIND
N7B	3"	TRACK DRAIN
N8	2"	VALVE & BLIND
N9	1 1/4"	BLIND
N10	1 1/4"	BLIND
N11	4"	BLIND
N12	4"	BLIND
N13	3"	INTERFACE DRAIN - FRAUD
N14	4"	H2O OUT
N15	4"	VENT/RELIEF
C1	1"	M/W DRAIN
C2	1"	VESSEL PI
C3	3/4"	NOT USED
C4	1"	NOT USED
C5	1"	NOT USED
C6	1"	TI 1652
C7	1"	TI 1651
C8	1"	TI 1650

SAMPLE TAP	INCHES FROM ϕ	COMMENTS
C9	44"	NO INTL. TAG
C10	24"	
C11	12"	
C12	ϕ	
C13	15"	
C14	25"	
C15	37"	

- OPERATIONAL NOTES:**
- ① THIS IS A FLOODED VESSEL LEVEL CONTROLLED WITH A 7' CAPACITANCE PROBE TO ACTIVATE THE H₂O DUMP. FLOW CONTROL SHOULD BE AS CONTINUOUS AS POSSIBLE (10. THATTLINK)
 - ② PRESSURE RELIEF IS SET TO 100PSIG TO FKO DRAIN. CHAIN LOCK ANY DOWNSTREAM VALVES IN OPEN POSITION
 - ③ DESIGN INTERFACE AT 12" (305mm) ABOVE ϕ VESSEL

Oil emulsion from surge vessel outlets
 Hi Pt. Vent 3/4"
 Hi Pt. Vent 3/4"
 2" GAS PURGE
 Oil emulsion to surge vessel
 TO SAMPLE BOX ISV
 TO SAMPLE BOX ISV
 H₂O TO TANK FARM
 TO SAMPLE BOX ISV
 DRAIN LINE TO TANK FARM
 LOW PT. DRAIN 3/4"

PRODUCTION BUILDING

N15-VENT/RELIEF

I/F DRAWAFFS 10" ABOVE ϕ VESSEL

TI 1652

TI 1651

TI 1650

TI 1650

TI 1650

TI 1650

TI 1650

TI 1650

TI 1650

TI 1650

TI 1650

TI 1650

TI 1650

TI 1650

TI 1650

TI 1650