

**T-1230**  
**CONDENSATE STABILIZER TOWER**  
 SIZE: 406mm (16") O.D. x 9576mm (31'-5") S/S  
 DESIGN: 2758 kPag (400 psig) @ -29°C/204°C (-20°F/400°F)  
 C.A.: 1.6mm (1/16")  
 (2) 2286mm (7'-6") KOCH-GLITCH PACKED SECTIONS (HY-PAK #1)

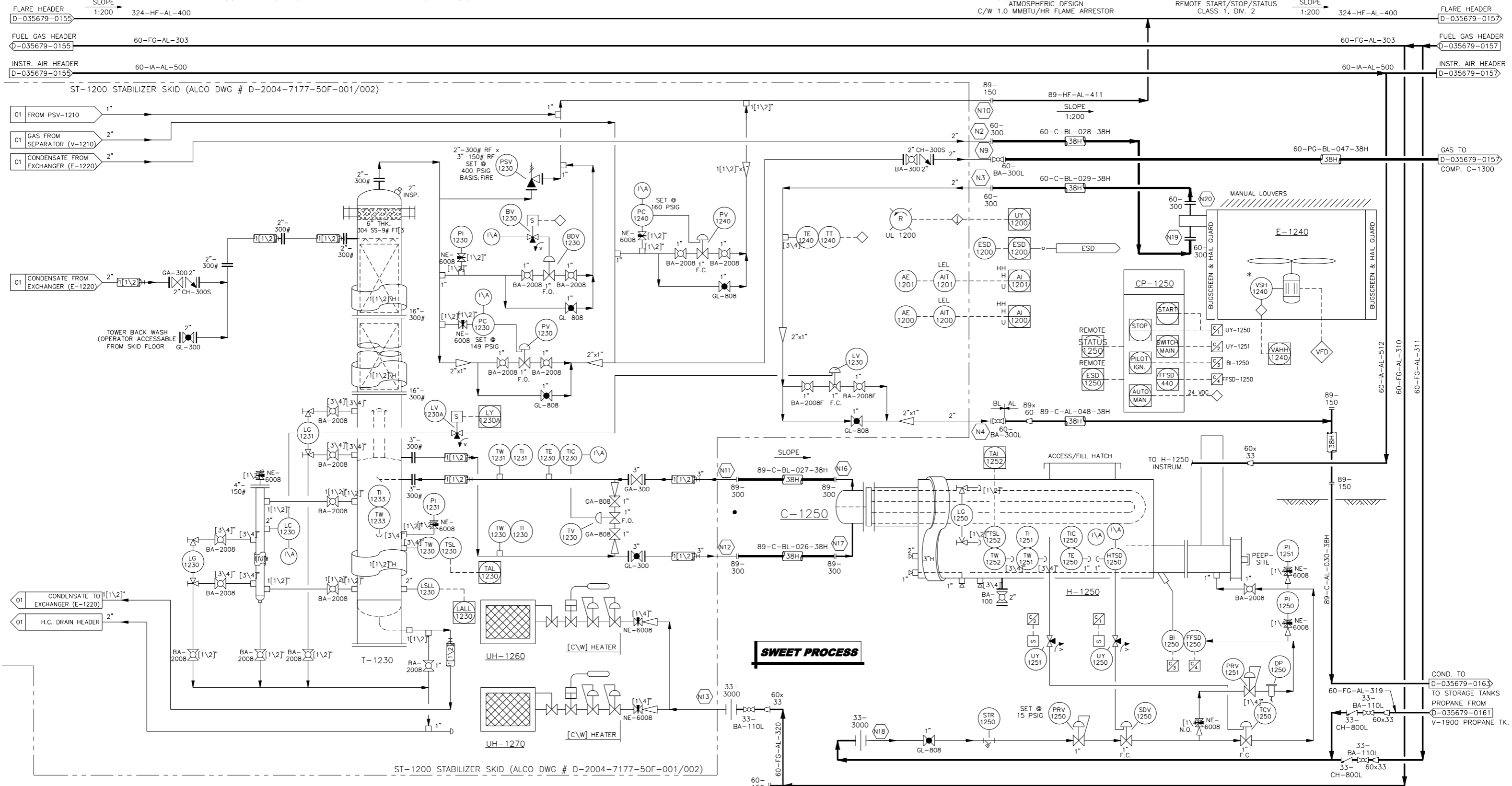
**UH-1260/UH-1270**  
**BUILDING HEATER**  
 DUTY: 24,000 BTU/HR  
 X.P. CATALYTIC W/ PROTECTIVE GRILL  
 100% SAFETY SHUT-OFF TEMPERATURE CONTROL,  
 120V START

**C-1250**  
**REMOVABLE PROCESS TUBE BUNDLE**  
 DESIGN: 2758 kPag (400 psig) @ -29°C/232°C (-20°F/450°F)  
 C.A.: 1.6mm (1/16")  
 MODEL:12-96 BEU, TEMA 'C'

**H-1250**  
**SALT BATH HEATER**  
 SIZE: 1067mm (42") O.D. x 3048mm (10'-0") LG.  
 FIRE TUBE SIZE: 356mm (14") O.D.  
 DUTY: 747,037 BTU/HR (38x2438mm (8'-0") LG U-TUBES)  
 33 (1") FUEL GAS PRE-HEAT COIL  
 ATMOSPHERIC DESIGN  
 C/W 1.0 MMBTU/HR FLAME ARRESTOR

**CP-1250**  
**BURNER CONTROL PANEL**  
 MAKE/MODEL: NAGY FGI-100  
 SPARK GENERATED IGNITOR  
 AUTO/MANUAL RE-LIGHT  
 FLAME FAIL SHUTDOWN  
 REMOTE START/STOP/STATUS  
 CLASS 1, DIV. 2

**E-1240**  
**PRODUCT COOLER**  
 HORIZONTAL AERIAL COOLER  
 MODEL: CSCI-H48  
 DUTY: (1) 7.5 H.P. 3/60/460 VAC TEFC MOTOR



**SWEET PROCESS**

DWG. NO.	REFERENCE DRAWINGS	DEVON PROJECT	REV	REVISIONS	DATE	BY	CHK'D	APP'D	OWNR APP'D	ENGINEER AND PERMIT STAMPS	DESIGNED	DRAWN	CHECKED	PROCESS CK.	MECH. CK.	STRUCT. CK.	ELECT. CK.	OWNER APP.	OWNER APP.	CONTR JOB NO	SCALE	DWG. NO.	DEVON PROJ.	
035679			0	ISSUED FOR CONSTRUCTION	04.11.30	BD	MWL	HN		<div style="border: 1px solid black; padding: 5px; text-align: center;">           THIS DRAWING WAS            SIGNED AND STAMPED            BY HOWARD NELSON AT REV.0            ON 04.12.10         </div>		JL	MWL								03-126	NTS	D-035679-0156.DWG	035679



PINTO  
 COMPRESSOR STATION  
 STABILIZER AREA P & ID  
 LSD 10-15-56-27 W5M

FILE: E:\Projects\Devon\_Canada\_Corp\03-126\PID\035679-0156.dwg shawn\_brodie TIME: 2006-09-28 15:34