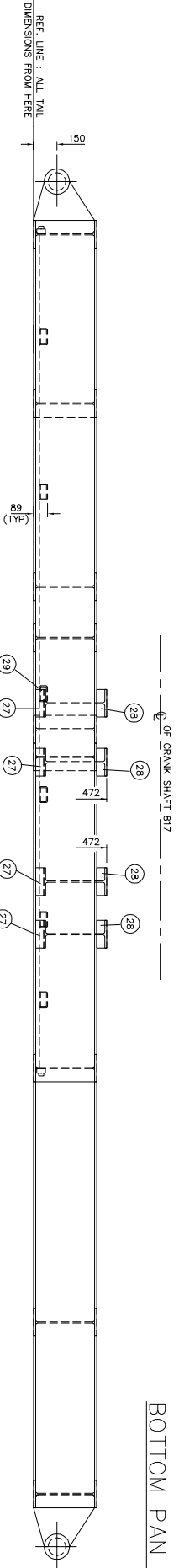
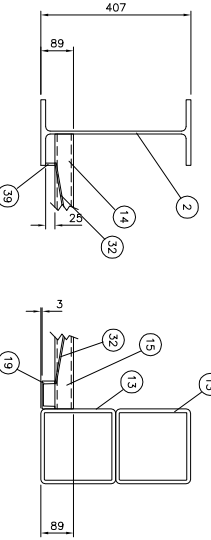


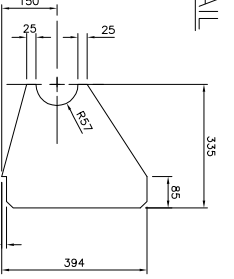
PLAN VIEW



ELEVATION VIEW

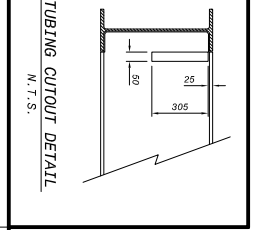
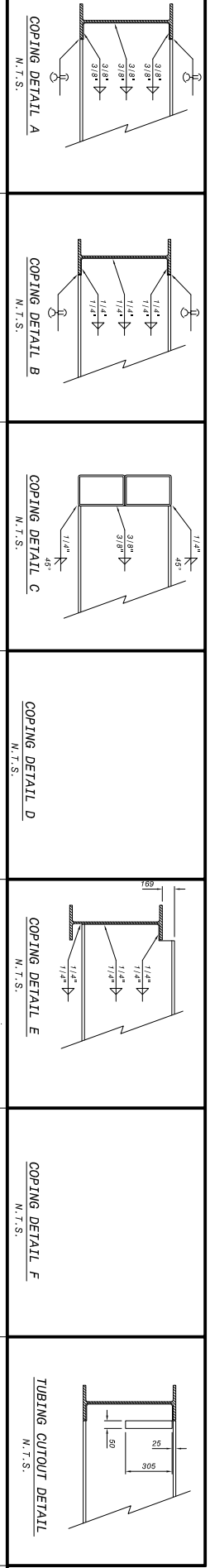


BOTTOM PAN DETAIL



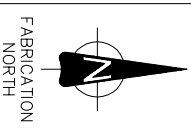
DETAIL ITEM #26

4 REQ'D



TUBING CUTOFF DETAIL

BILL OF MATERIAL		TOTAL APPROXIMATE WEIGHT	
NO	QTY	DESCRIPTION	WEIGHT
1	2	W 6"x4"	5548
2	1	W 8"x4"	1825
3	2	W 10"x4"	1176
4	2	W 12"x4"	715
5	2	W 14"x4"	694
6	2	W 16"x4"	669
7	2	W 18"x4"	398
8	2	W 20"x4"	272
9	2	W 22"x4"	194
10	2	W 24"x4"	146
11	2	W 26"x4"	114
12	2	W 28"x4"	81
13	2	W 30"x4"	58
14	2	W 32"x4"	44
15	2	W 34"x4"	33
16	2	W 36"x4"	25
17	2	W 38"x4"	19
18	2	W 40"x4"	14
19	2	W 42"x4"	11
20	2	W 44"x4"	8
21	2	W 46"x4"	6
22	2	W 48"x4"	4
23	2	W 50"x4"	3
24	2	W 52"x4"	2
25	2	W 54"x4"	1
26	2	W 56"x4"	1
27	2	W 58"x4"	1
28	2	W 60"x4"	1
29	2	W 62"x4"	1
30	2	W 64"x4"	1
31	2	W 66"x4"	1
32	2	W 68"x4"	1
33	2	W 70"x4"	1
34	2	W 72"x4"	1
35	2	W 74"x4"	1
36	2	W 76"x4"	1
37	2	W 78"x4"	1
38	2	W 80"x4"	1
39	2	W 82"x4"	1
40	2	W 84"x4"	1
41	2	W 86"x4"	1
42	2	W 88"x4"	1
43	2	W 90"x4"	1
44	2	W 92"x4"	1
45	2	W 94"x4"	1
46	2	W 96"x4"	1
47	2	W 98"x4"	1
48	2	W 100"x4"	1
49	2	W 102"x4"	1
50	2	W 104"x4"	1
51	2	W 106"x4"	1
52	2	W 108"x4"	1
53	2	W 110"x4"	1
54	2	W 112"x4"	1
55	2	W 114"x4"	1
56	2	W 116"x4"	1
57	2	W 118"x4"	1
58	2	W 120"x4"	1
59	2	W 122"x4"	1
60	2	W 124"x4"	1
61	2	W 126"x4"	1
62	2	W 128"x4"	1
63	2	W 130"x4"	1
64	2	W 132"x4"	1
65	2	W 134"x4"	1
66	2	W 136"x4"	1
67	2	W 138"x4"	1
68	2	W 140"x4"	1
69	2	W 142"x4"	1
70	2	W 144"x4"	1
71	2	W 146"x4"	1
72	2	W 148"x4"	1
73	2	W 150"x4"	1
74	2	W 152"x4"	1
75	2	W 154"x4"	1
76	2	W 156"x4"	1
77	2	W 158"x4"	1
78	2	W 160"x4"	1
79	2	W 162"x4"	1
80	2	W 164"x4"	1
81	2	W 166"x4"	1
82	2	W 168"x4"	1
83	2	W 170"x4"	1
84	2	W 172"x4"	1
85	2	W 174"x4"	1
86	2	W 176"x4"	1
87	2	W 178"x4"	1
88	2	W 180"x4"	1
89	2	W 182"x4"	1
90	2	W 184"x4"	1
91	2	W 186"x4"	1
92	2	W 188"x4"	1
93	2	W 190"x4"	1
94	2	W 192"x4"	1
95	2	W 194"x4"	1
96	2	W 196"x4"	1
97	2	W 198"x4"	1
98	2	W 200"x4"	1
99	2	W 202"x4"	1
100	2	W 204"x4"	1



- GENERAL NOTES**
- THIS DRAWING IS NOT TO BE USED FOR CONSTRUCTION UNLESS STAMPED AND SIGNED BY THE ENGINEER.
 - DO NOT SCALE THIS DRAWING!
 - ALL DIMENSIONS ARE IN MILLIMETERS.
 - ALL STEEL DIMENSIONS ARE TO FIT TO FIT.
 - ALL IN-SKID PIPING TO BE LEAK TESTED BY PAB SHOP, BY SOAP BUBBLE TEST OR FULL RAW WATER PRESSURE.
 - SKID CONSTRUCTION TO MAINTAIN FLUSH ON TOP PRODUCT. FOR SLIGHTLY WAGGED OR BENT MAIN BEAM FLANGES, THE INSIDE FLANGES SHOULD BE KEPT FLAT IN THE PRESSURE ZONE WITH AN ALLOWABLE DEFLECTION.
 - TRUSS MEMBERS WITH AN ALLOWABLE DEFLECTION.
 - ALL MEMBERS ARE TO BE CORDED TO SUIT SAME UNLESS OTHERWISE INDICATED.

ENERFLEX Manufacturing

ENERFLEX SYSTEMS LTD.
4909, 76 Avenue S.E.
Calgary, Alberta
T2C 3K8

OLGARY
MEDICINE HAT
RED DEER
LONDON/STONER, SASKATOON
SPENCER, AUSTRALIA

SAWYER, B.C.
SASKATOON, SASK.
LONDON/STONER, SASKATOON
SPENCER, AUSTRALIA

MAIN SKID
ARIEL JCA/2, TOSHIBA 200hp 445T, AIR-X-CHANGERS 72BH
COMPRESSOR PACKAGE

CONSULTANT: VISTA PROJECTS
(LITTLE BOY)

DATE: 96-06-18
DWG. NO.: SK96044

DATE: 96-06-18
DWG. NO.: SK96044

DATE: 96-06-18
DWG. NO.: SK96044

© 1996 Enerflex Systems Ltd. All rights reserved. THESE MATERIALS ARE THE PROPERTY OF ENERFLEX SYSTEMS LTD. WRITTEN CONSENT OF ENERFLEX SYSTEMS LTD. IS REQUIRED FOR REPRODUCTION, REPAIR AND MAINTENANCE OF THE PRODUCTS.