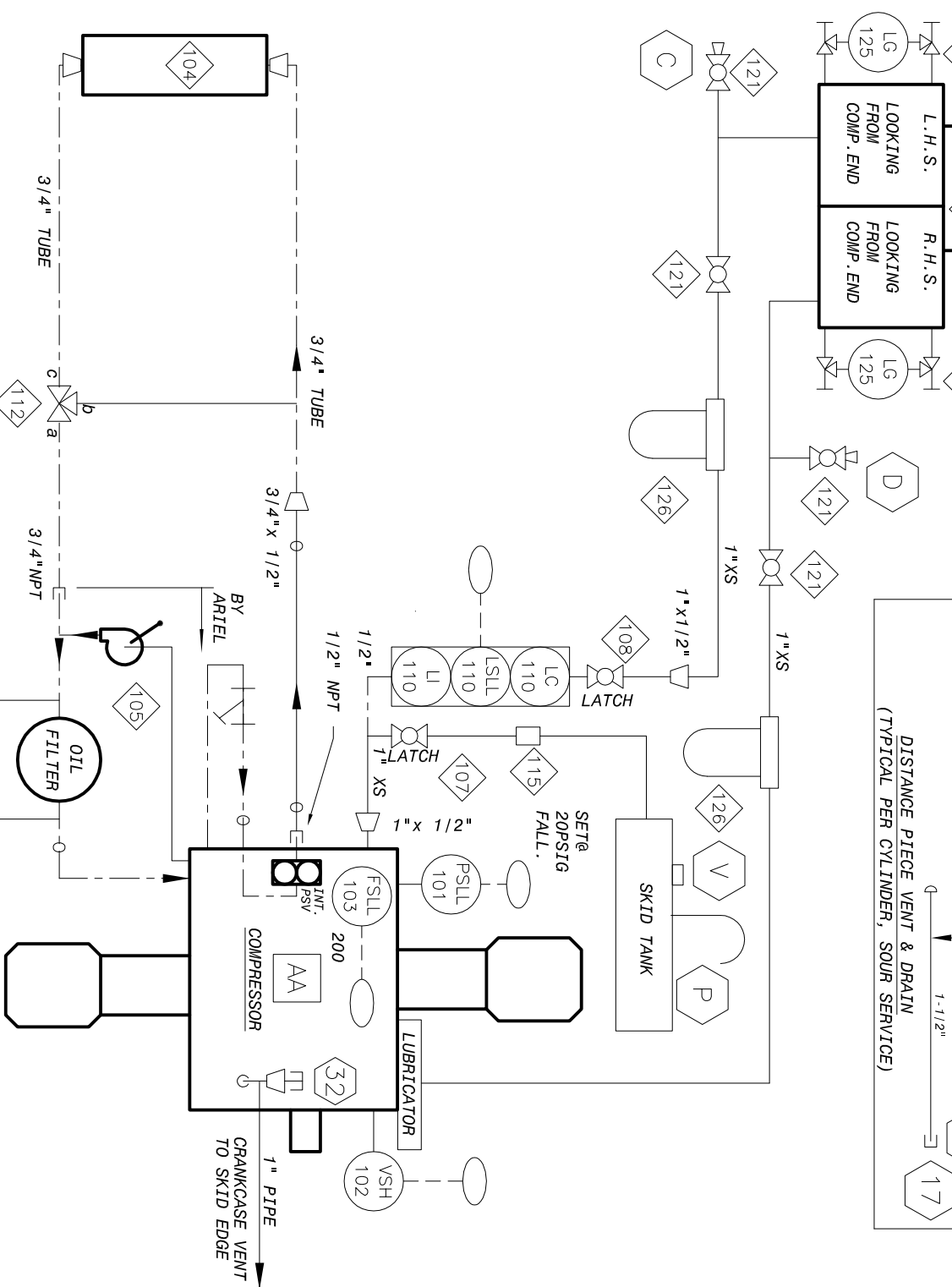
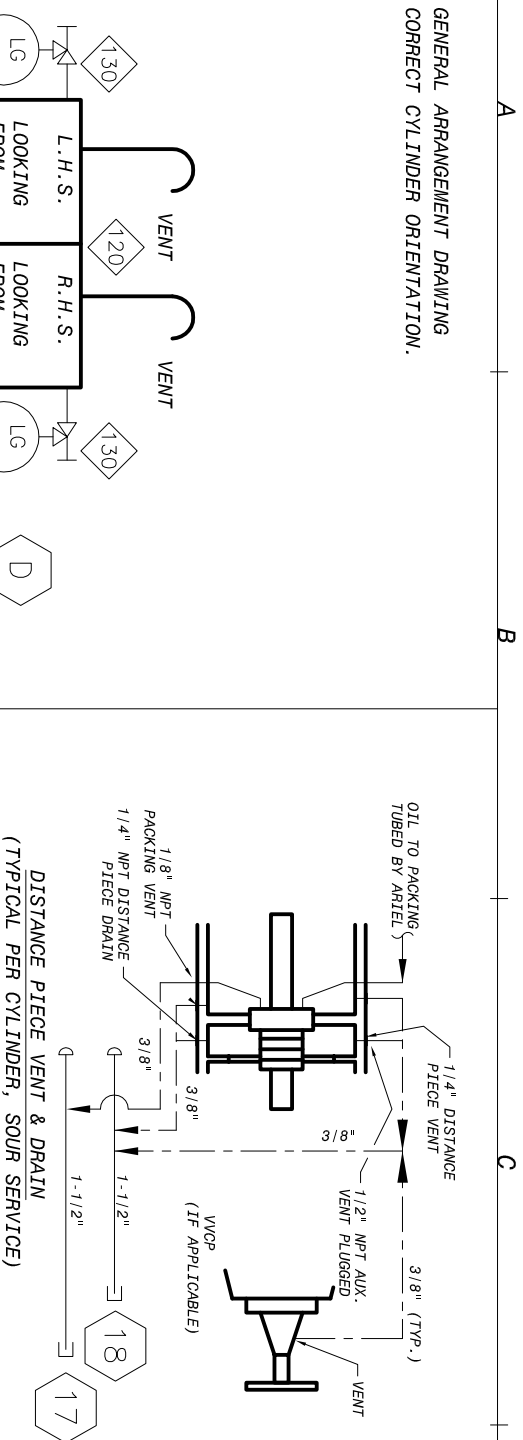


NOTE:
1. SEE THE GENERAL ARRANGEMENT DRAWING FOR THE CORRECT CYLINDER ORIENTATION.



© 1996 Enerflex Systems Ltd. THESE MATERIALS ARE THE PROPERTY OF ENERFLEX SYSTEMS LTD. ANY REPRODUCTION OF ANY PORTION OF THESE MATERIALS WITHOUT THE EXPRESS WRITTEN CONSENT OF ENERFLEX SYSTEMS LTD. IS STRICTLY PROHIBITED. THESE MATERIALS SHALL NOT BE USED FOR ANY REPAIR AND MAINTENANCE OF THE PRODUCTS WHICH ARE REPRODUCIBLE.

CAD

REPRODUCTION OF ANY PORTION OF THESE MATERIALS WITHOUT THE EXPRESS WRITTEN CONSENT OF ENERFLEX SYSTEMS LTD. IS STRICTLY PROHIBITED. THESE MATERIALS SHALL NOT BE USED FOR ANY REPAIR AND MAINTENANCE OF THE PRODUCTS WHICH ARE REPRODUCIBLE.

BILL OF MATERIAL

ITEM	QTY.	CODE No.	DESCRIPTION
101	1	ZPNP6-4401	PRES SWITCHGAUGE, MURPHY A25-EO-100 (SUPPLIED BY BERMAC)
102	1	BMU-VS2	VIB SW, MURPHY VS-2 ELECTRIC WI MANUAL RESET
103	1	AAR-527E	LUBE NO FLOW SD, TRABON 527-100-180
104	1	BHA-K1240	OIL COOLER, HAYDEN SWIRL-COOL K1240 1/2" NPT
105	1	ZPNP6-0903	MANUAL PRIMING PUMP (BY ARIEL)
107	1	BNI-T5606	BALL VALVE, NIBCO T560-CS-R-25 3/4" WI LATCHING HANDLE
108	1	BGR-391104	BALL VALVE, GRINNELL 1/2" NPT, FIG 3911, 2000 WOG, RP, CS
110	1	BKE-LCE9	LEVEL CONTROLLER WI SWITCH, KENCO LCE-9 CSA XP
112	1	BAW-CMCT06	THERMOSTAT, AMOT 3/4" CMCT-170-01
115	1	BDR-C10	SLEEVE COUPLING, 1" DRESSER STYLE 90 STRAIGHT
120	1	XO1LTANK	LUBE OIL TANK DRAWING NO. 05.50101/182
121	4	BNI-T5610	BALL VALVE, 1" NPT NIBCO T560-CS-R-25 2000# WOG RP WI
125	2	XSIGHTGLASS	GAUGE GLASS, CLEAR ACRYLIC TUBING, BY SHOP
126	2	BBA-BF914	GAS FILTER, BALDWIN BF914 1" NPT WI BF915 ELEMENT
130	2	BDA-1TCN	SET TUBULAR GAUGE VLV, DANIEL #1TC SWEET, 1/2" NPT, CS, 500#

ENERFLEX SYSTEMS LTD. **ENERFLEX** CUSTOMER: CRESTAR ENERGY INC. LITTLE BOW, ALBERTA

JOB No.: 96044

AS BUILT

Rev.	Description	Date	By
3	RE-ISSUE FOR CONSTRUCTION	96-08-14	
2	ISSUE FOR CONSTRUCTION	96-06-27	
1	FOR APPROVAL	96-06-17	
0		96-06-07	

TITLE: STANDARD SCHEMATIC COMPRESSOR EQUIPMENT & CONTROLS

DWG: SF96044A

OPBR# #: 20