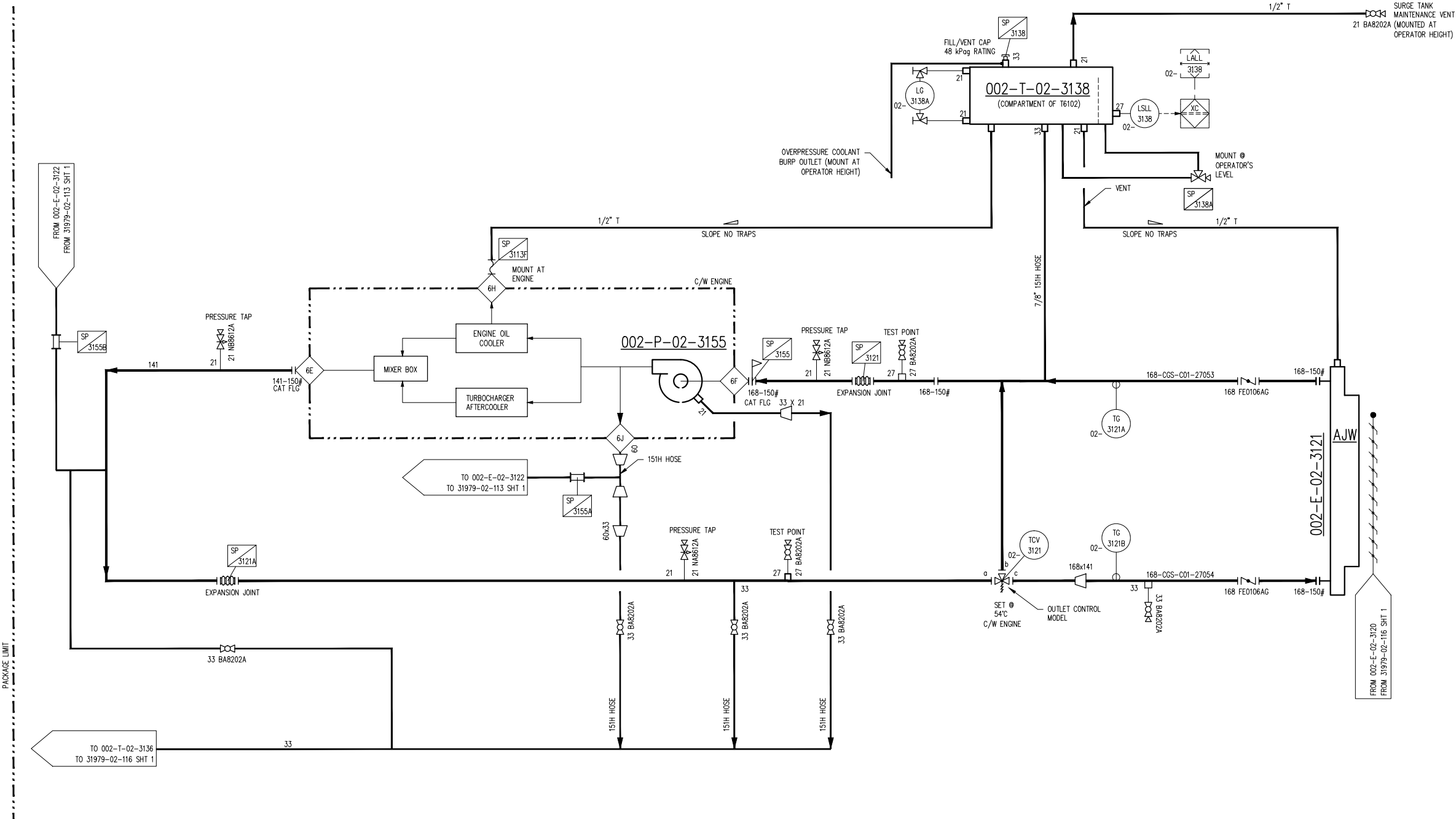


002-P-02-3155
ENGINE AUXILIARY JACKET WATER PUMP
MFG: CATERPILLAR
MAX. FLOW: 1495 LPM (395 GPM) @ 12m (40 FT) H₂O
HEAD PRESS

002-T-02-3138
GLYCOL (AJW) SURGE TANK
MFG: EFX
CAPACITY: 26 USG (98.5 LITERS)
MAWP: 97 KPAG

002-E-02-3121
ENGINE AUXILIARY WATER COOLER SECTION
MFG: AIR-X-LIMITED
MAWP: 97 kPag @ 149°C
MDMT: -29°C @ 97 kPag
CAPACITY: 439 L (15.486 FT³)
DUTY: 3706340 BTU/HR



**FINAL
AS BUILT**

NAME: C. SMITH DATE: JAN 02/14

3	FINAL AS BUILT	JAN 02/14	CS	SG	DATE	JAN 23/13	SCALE	NTS	DEVON CANADA FERRIER CPF DEEP CUT FEED CATERPILLAR G3606LE ARIEL JGD/4-1 SWEET	ENERFLEX Calgary, Alberta, Canada	P & I DIAGRAM COOLING SYSTEM AUXILIARY JACKET WATER					
2	FINAL AS BUILT	JUL 03/13	CS	SG	DRAWN BY	A.HAMMOND	CHECKED BY	S.GURI				APPROVED BY	B.MINSHULL			
1	ISSUED FOR CONSTRUCTION	JUL 03/13	CS	SG	PROJECT MANAGER		PROJECT ENGINEER					B.MINSHULL	S.GURI			
0	ISSUED FOR CONSTRUCTION	APR 19/13	AT	SG	CUST PO		4100000964									
B	ISSUED FOR HAZOP	MAR 08/13	AT	SG							DWG NO	31979-02-116	SHT	2	REV	3
A	ISSUED FOR CUSTOMER APPROVAL	FEB 15/13	AT	SG						WORK ORDER	31979-02					
REV	DESCRIPTION	DATE	BY	APR	APEGGA PERMIT No: P8651					OPER. CODE						