

002-P-02-3153
GLYCOL TRANSFER PUMP

MFG: YAMADA
MODEL: NDP-25 BAN
MAX FLOW: 49 GPM

002-EH-02-3141
ENGINE GLYCOL HEATER

MFG: KIM HOTSTART
HEATER: 18KW (24.1HP)
PUMP: 1HP (0.746W)
40GMP @ 3450RPM
POWER: 575V/3PH/60HZ
WIRED BY OTHERS

002-T-02-3136
GLYCOL TANK

MFG: EFX
CAPACITY: 2124L (561USG)

002-P-02-3154
ENGINE JACKET WATER PUMP

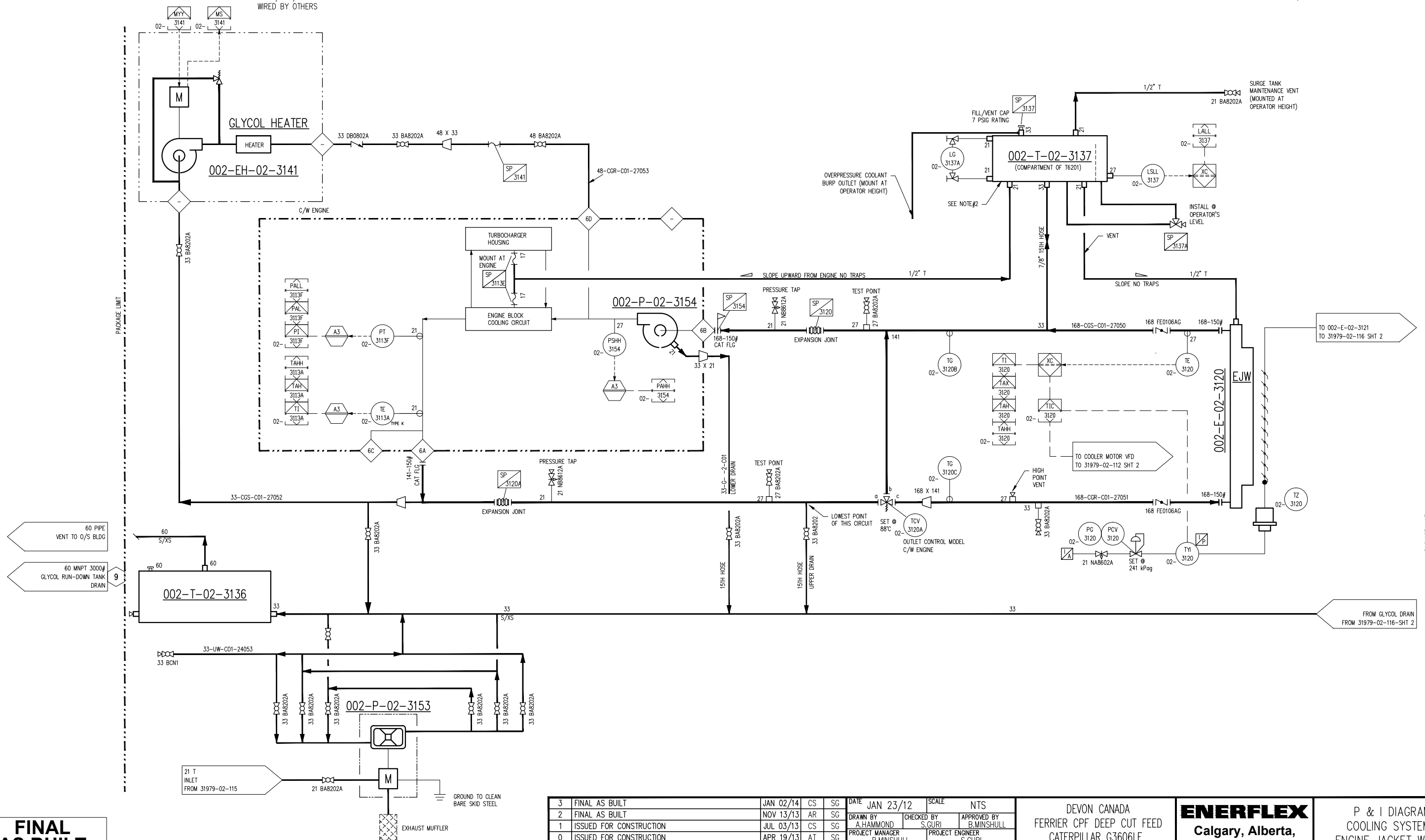
MFG: CATERPILLAR
MAX. FLOW: 1596 LPM (422 GPM) @ 0.10m (33 FT) H₂O HEAD PRESS.

002-T-02-3137
EJW SURGE TANK

MFG: EFX
CAPACITY: 58 USG (220 LITERS)
MAW: 97 kPag

002-E-02-3120
ENGINE JACKET WATER COOLER SECTION

MFG: AIR-X-LIMITED
MAWP: 97 kPag @ 149°C
MDMT: -29°C @ 97 kPag
CAPACITY: 247L (8.707 FT)³
HEAT DUTY: 1622175 BTU/HR



**FINAL
AS BUILT**

NAME: C.SMITH DATE: JAN 02/14

3	FINAL AS BUILT	JAN 02/14	CS	SG	DATE	JAN 23/12	SCALE	NTS	DEVON CANADA FERRIER CPF DEEP CUT FEED CATERPILLAR G3606LE ARIEL JGD/4-1 SWEET	ENERFLEX Calgary, Alberta, Canada	P & I DIAGRAM COOLING SYSTEM ENGINE JACKET WATER					
2	FINAL AS BUILT	NOV 13/13	AR	SG	DRAWN BY	A.HAMMOND	CHECKED BY	S.GURI				APPROVED BY	B.MINSHULL			
1	ISSUED FOR CONSTRUCTION	JUL 03/13	CS	SG	PROJECT MANAGER	B.MINSHULL	PROJECT ENGINEER	S.GURI								
0	ISSUED FOR CONSTRUCTION	APR 19/13	AT	SG	CUST PO	4100000964										
B	ISSUED FOR HAZOP	MAR 08/13	AT	SG												
A	ISSUED FOR CUSTOMER APPROVAL	FEB 15/13	AT	SG												
REV	DESCRIPTION	DATE	BY	APR	APEGGA PERMIT No:	P8651	OPER. CODE		WORK ORDER	31979-02	DWG NO	31979-02-116	SHT	1	REV	3