

PLOT DATE January 08, 2014 THE INFORMATION CONTAINED HEREIN IS THE CONFIDENTIAL PROPERTY OF ENERFLEX, LTD. AND IS NOT FOR PUBLICATION, AND NO PART THEREOF SHALL BE COPIED OR COMMUNICATED TO A THIRD PARTY WITHOUT AUTHORIZATION FROM ENERFLEX, LTD.

002-T-02-3133
CYLINDER LUBE OIL DAYTANK
MFG: EFX
CAPACITY: 653 LITERS

002-T-02-3135
COMP. /ENGINE WASTE OIL STORAGE TANK
MFG: EFX
CAPACITY: 2132 LITERS

002-FL-02-3146
COMP. CYLINDER LUBE MICRO OIL FILTER
MFG: ARIEL
ELEMENT:

002-FL-02-3145
COMP. CYLINDER LUBE OIL FILTER
MFG: GEMINI
MODEL: 405-045

002-P-02-3124
COMP. CYL. LUBE OIL PUMP
MFG: ARIEL
PLUNGER PUMP

002-P-02-3125
COMP. CYL. LUBE OIL PUMP
MFG: ARIEL
PLUNGER PUMP

002-FL-02-3147
COMP. SIMPLEX FRAME OIL FILTER
MFG: ARIEL
ELEMENT: ARIEL PART #A-4155

002-P-02-3126
COMP. FRAME OIL PUMP
MFG: ARIEL
MAX FLOW: JGD/4: 279 LITRES/M

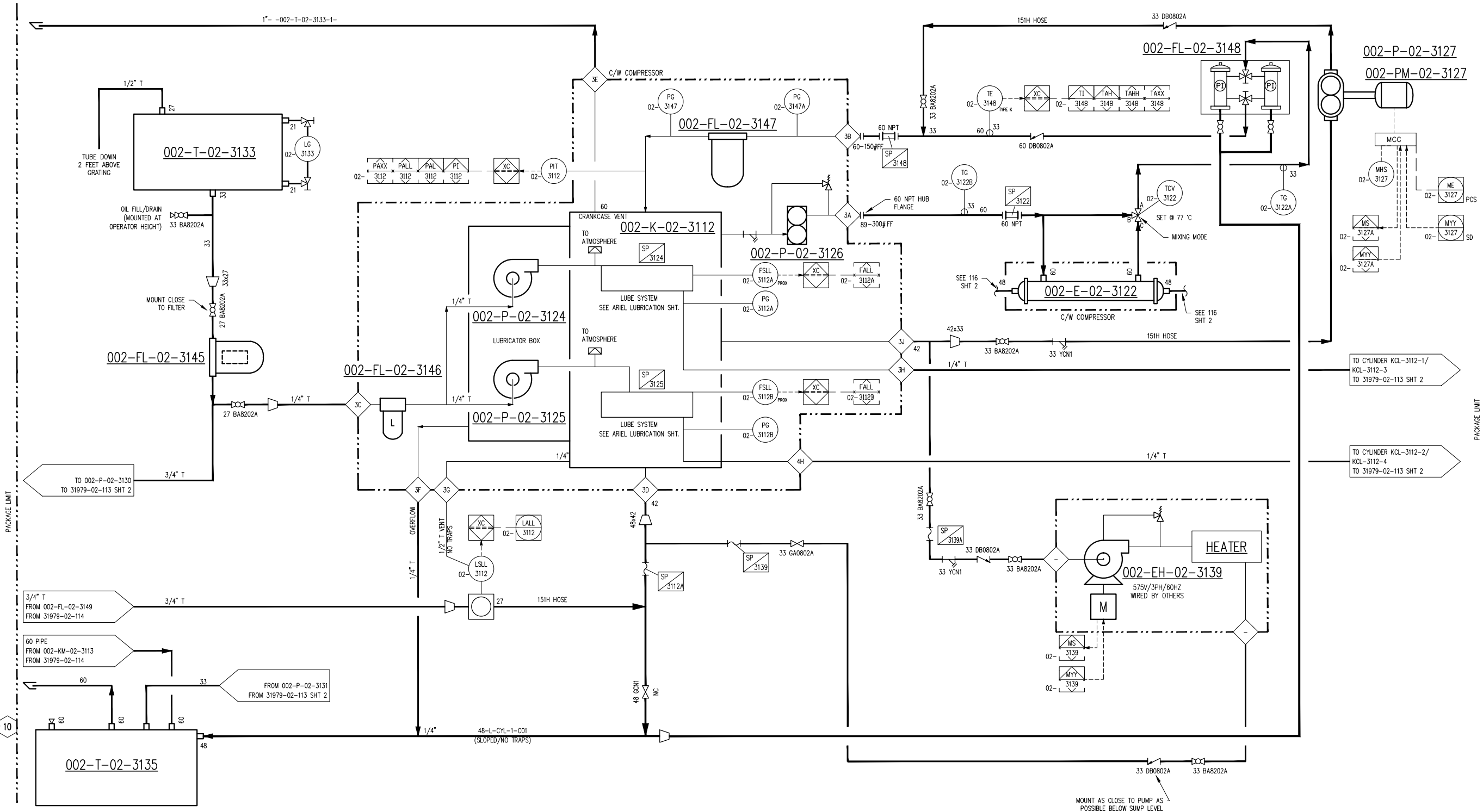
002-PM-02-3127
PRE-LUBE PUMP MOTOR
MFG: WEG IECE
ELECTRICAL: 575 VAC/3 PH/60 HZ
POWER: 5 HP

002-FL-02-3148
COMP. DUPLEX OIL FILTER
MFG: ARIEL
ELEMENT: ARIEL PART #

002-EH-02-3139
COMPRESSOR OIL HEATER
MFG: KIM HOTSTART
MODEL: OLE30605-640
RATING: 32GPM/2.5KW/575VAC/3PH/60HZ, 4.1AMP
OIL PUMP MOTOR: 1HP, 575VAC/3PH/60HZ

002-E-02-3122
COMP. FRAME OIL COOLER
MFG: ARIEL
MODEL: B-2073
DRAWING#: A-4154

002-P-02-3127
COMP. PRELUBE OIL PUMP
MFG: VIKING
MODEL: HL-4194
MAX FLOW: 30 GPM
48mm (1 1/2") NPT IN/OUT



**FINAL
AS BUILT**
NAME: C.SMITH DATE: JAN 02/14

4	FINAL AS BUILT	JAN 02/14	CS	LD	DATE	JAN 23/13	SCALE	NTS
3	FINAL AS BUILT	NOV 13/13	AR	LD	DRAWN BY	A. TRAN	CHECKED BY	S. GURI
2	REVISED TAGGING	AUG 26/13	AT	LD	APPROVED BY	B. MINSHULL	PROJECT ENGINEER	S. GURI
1	ISSUED FOR CONSTRUCTION	JUL 03/13	CS	SG	PROJECT MANAGER	B. MINSHULL	PROJECT ENGINEER	S. GURI
0	ISSUED FOR CONSTRUCTION	APR 19/13	AT	SG	CUST PO	4100000964		
B	ISSUED FOR HAZOP	MAR 08/13	AT	SG	APEGGA PERMIT No:	P8651	OPER CODE	
REV	DESCRIPTION	DATE	BY	APR	WORK ORDER	31979-02		

DEVON CANADA
FERRIER CPF DEEP CUT FEED
CATERPILLAR G3606LE
ARIEL JGD/4-1 SWEET

ENERFLEX
Calgary, Alberta,
Canada

P&I DIAGRAM
COMP. LUBE OIL & UTILITIES
JGCD4 - STD

DWG NO 31979-02-113 SHT 1 REV 4