

PLOT 05 Jan, 2014-1:37pm, csmith THE INFORMATION CONTAINED HEREIN IS THE CONFIDENTIAL PROPERTY OF ENERFLEX, LTD. AND IS NOT FOR PUBLICATION, AND NO PART THEREOF SHALL BE COPIED OR COMMUNICATED TO A THIRD PARTY WITHOUT AUTHORIZATION FROM ENERFLEX, LTD.

002-V-02-3118
SUCTION BOTTLE

MFG: ENERFLEX LTD.
SIZE: 508mm(20") OD X 2023mm(80") S/S
MAWP: 8963 KPAG @ 149°C 1300 PSIG @ 300°F)
MDMT: 29°C @ 8963 KPAG (-20°F @ 650 PSIG)
CA: 1.6mm(1/16")
MATERIAL: CARBON STEEL
S/N: 31979024224
CRN: W1536.2

002-V-02-3119
DISCHARGE BOTTLE

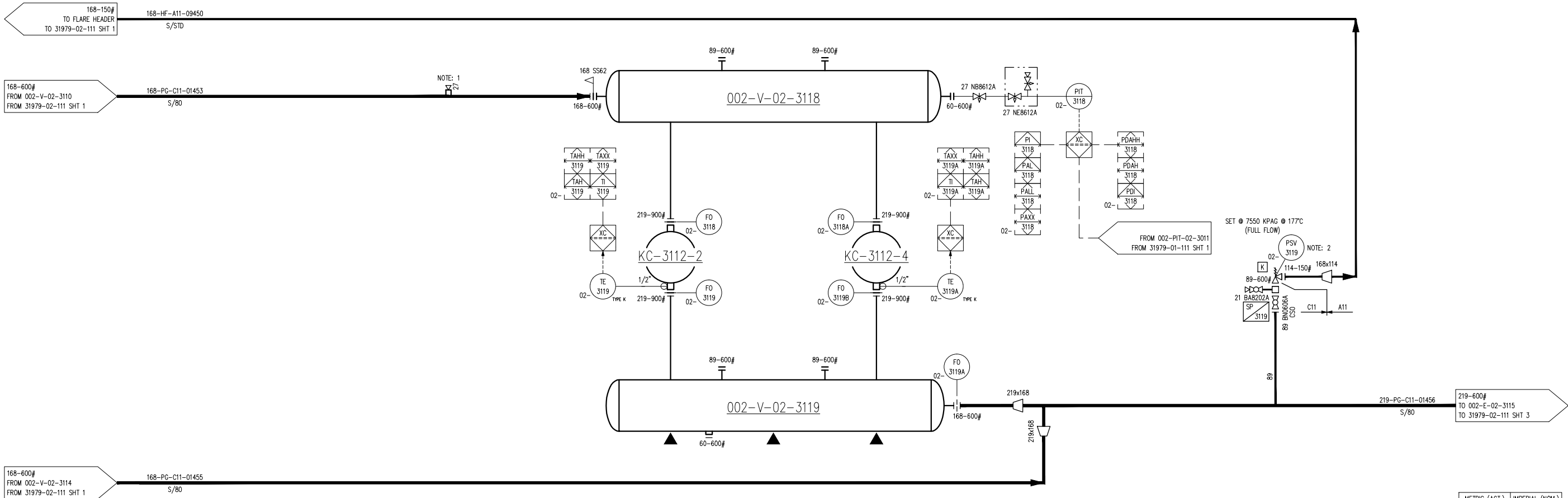
MFG: ENERFLEX LTD.
SIZE: 508mm(20") OD X 3175mm(125") S/S
MAWP: 8860 KPAG @ 177°C (1285 PSIG @ 350°F)
MDMT: -29°C @ 8860 KPAG (-20°F @ 1285 PSIG)
CA: 1.6mm(1/16")
MATERIAL: CARBON STEEL
S/N: 31979024226
CRN: W1537.2

KC-3112-2
COMPRESSOR CYLINDER

MFG: ARIEL
MODEL: 9 3/4 DM
SIZE: 9.750" BORE
MAWP: 11721 KPAG (1700 PSIG)
THROW: #2
S/N: C-145872

KC-3112-4
COMPRESSOR CYLINDER

MFG: ARIEL
MODEL: 9 3/4 DM
SIZE: 9.750" BORE
MAWP: 11721 KPAG (1700 PSIG)
THROW: #4
S/N: C-145869



METRIC (ACT.)	IMPERIAL (NOM.)
14	1/4"
21	1/2"
27	3/4"
33	1"
48	1 1/2"
60	2"
89	3"
114	4"
168	6"
219	8"
273	10"
324	12"
356	14"
406	16"

NOTES:

- VIEW POINT FOR BOROSCOPE MOUNT CLOSE TO THE STRAINER.
- PSV SET POINT IS CHANGED TO 7550 KPAG FROM 8860 KPAG TO PROTECT OFF-SKID PIPING MAWP.

**FINAL
AS BUILT**
NAME: C.SMITH DATE: JAN 02/14

	4	FINAL AS BUILT	JAN 02/14	CS	LD	DATE	JAN 23/13	SCALE	NTS	DEVON CANADA FERRIER CPF DEEP CUT FEED CATERPILLAR G3606LE ARIEL JGD/4-1 SWEET	ENERFLEX Calgary, Alberta, Canada	P & I DIAGRAM PROCESS GAS STAGE #1				
	3	FINAL AS BUILT	NOV 13/13	AR	LD	DRAWN BY	G.PAHL	CHECKED BY	S.GURI				APPROVED BY	B.MINSHULL		
	2	REVISED TAGGING	AUG 26/13	AT	LD	PROJECT MANAGER	B.MINSHULL	PROJECT ENGINEER	S.GURI							
	1	ISSUED FOR CONSTRUCTION	JUL 03/13	CS	SG	CUST PO			4100000964							
	0	ISSUED FOR CONSTRUCTION	APR 19/13	AT	SG	APEGGA PERMIT No:			P8651							
	B	ISSUED FOR HAZOP	MAR 08/13	AT	SG	OPER. CODE			31979-02							
REV	DESCRIPTION					DATE	BY	APR	WORK ORDER	31979-02	DWG NO	31979-02-111	SHT	2	REV	4