

002-V-02-3123

FUEL GAS SCRUBBER

MFG: EFX FF-8-245-125-00

SIZE: 219mm (8.625") OD FILTER

MAMP: 1689 kPag @ 121°C (245 PSIG @ 150°F)

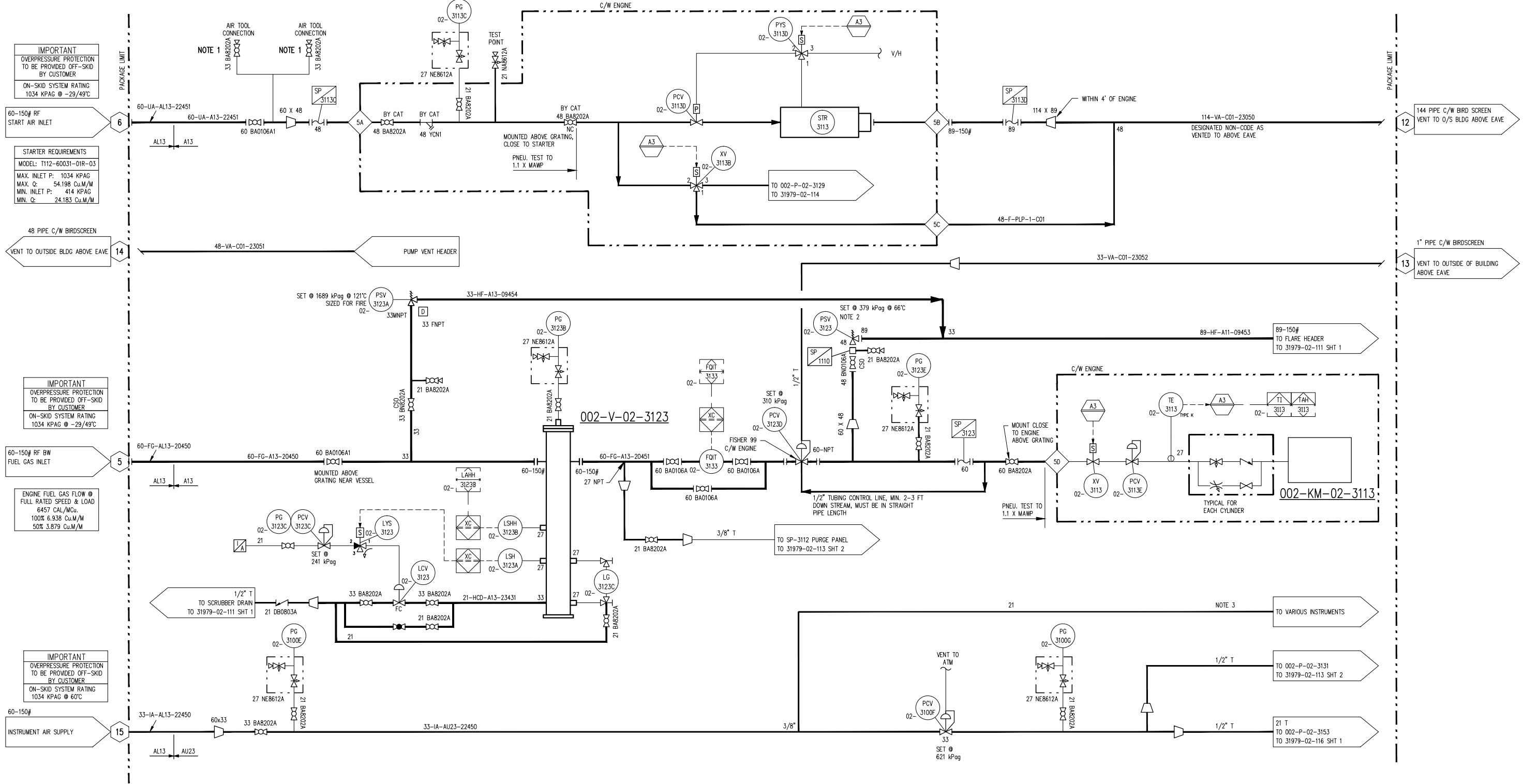
FILTER MODEL: GCA3P30K03V

MFG: DANVIL

RISER MODEL: GA3630P222SS

S/N: 31979024240

CRN: V2458.213



NOTES:

- AIR TOOL CONNECTION TO BE PROVIDED ON BOTH SIDES OF SKID.
- PCV-3023 TO BE BALANCE BELOW.
- INSTRUMENT ISOLATION VALVE 21 BA8202 TO BE INSTALLED ON.
- LCV-3023 IS OPENED AND CLOSED ON TIME DELAY OF:

FINAL AS BUILT
NAME C.SMITH DATE JAN 02/14

	4	FINAL AS BUILT	JAN 02/14	CS	LD	DATE JAN 23/13	SCALE NTS	DEVON CANADA FERRIER CPF DEEP CUT FEED CATERPILLAR G3606LE ARIEL JGD/4-1 SWEET	ENERFLEX Calgary, Alberta, Canada	P & I DIAGRAM START FUEL/ GAS SUPPLY			
	3	FINAL AS BUILT	NOV 13/13	AR	LD	DRAWN BY A.HAMMOND	CHECKED BY S.GURI						APPROVED BY B.MINSHULL
	2	REVISED TAGGING	AUG 26/13	AT	LD	PROJECT MANAGER B.MINSHULL							PROJECT ENGINEER S.GURI
	1	ISSUED FOR CONSTRUCTION	JUL 03/13	CS	SG	CUST PO 4100000964							
	0	ISSUED FOR CONSTRUCTION	APR 19/13	AT	SG	APEGGA PERMIT No: P8651							OPER. CODE
	B	ISSUED FOR HAZOP	MAR 08/13	AT	SG					DWG NO 31979-02-115	SHT 1	REV 4	
	REV	DESCRIPTION	DATE	BY	APR								