

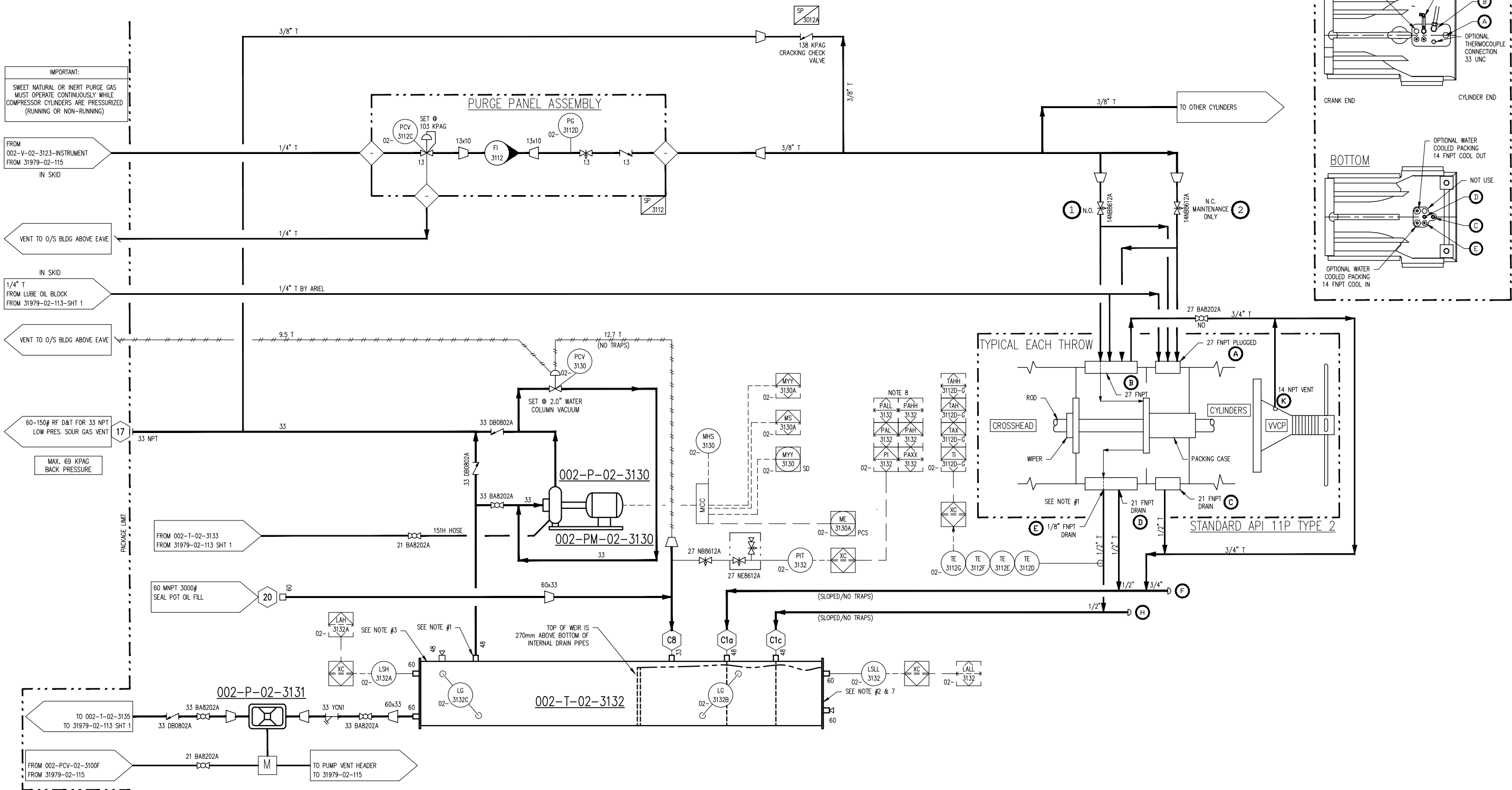
PLOT 08 Jan, 2014-1:39pm, csmith THE INFORMATION CONTAINED HEREIN IS THE CONFIDENTIAL PROPERTY OF ENERFLEX, LTD. AND IS NOT FOR PUBLICATION, AND NO PART THEREOF SHALL BE COPIED OR COMMUNICATED TO A THIRD PARTY WITHOUT AUTHORIZATION FROM ENERFLEX, LTD.

002-PM-02-3130
VACUUM PUMP MOTOR
RATING: 575 VAC/1.5 HP/60HZ/3 PH

002-P-02-3130
VACUUM PUMP
MFG: UTILE
MODEL: LGA-12-1.5-12-3

002-T-02-3132
SEAL POT/SOUR WASTE OIL TANK
MFG: EFX
CAPACITY: 315 LITRES (SEE NOTE #7)

002-P-02-3131
SEAL POT DRAIN PUMP
MFG: YAMADA DIAPHRAGM PUMP
MODEL: NDP-15 BAN
RATE: 15 GPM
SUPPLY: 20 - 100 PSIG
IN/OUT: 1/2" NPT



NOTES:

1. VENTING SOUR WASTE OIL TANK TO ATMOSPHERE IS NOT RECOMMENDED FOR SAFETY REASONS.
2. SEAL POT TO BE CHARGED WITH OIL (SAE 30/40) PRIOR TO START UP.
3. TOP OF OIL SEAL POT ELEVATION SHALL BE NO LESS THAN 168" BELOW BOTTOM OF DISTANCE PIECES.
4. # LETTER TAGS REFER TO CAC-ENG-DAN-003, "ARIEL VENTING AND DRAINING REQUIREMENTS".
5. # TAGS REFER TO DWG. #NNNNN-SEALPOT.
6. PACKING TEMPERATURE SET POINTS MUST BE REVIEWED AND RESET POST START UP.
TAHH SET POINT = NORMAL TEMP. - 5°C
TAHH SET POINT = NORMAL TEMP. - 3°C
7. REFER TO CAC-ENG-DAN-001, "SOUR GAS SEAL POTS FUNCTION AND DESIGN" FOR SIZING AND SELECTION.
8. ON 002-PALL-02-3132 ONLY PUMP TO BE TURNED OFF.

**FINAL
AS BUILT**

NAME C.SMITH DATE JAN 02/14

3	FINAL AS BUILT	JAN 02/14	CS	LD	DATE	JAN 23/13	SCALE	NTS
2	FINAL AS BUILT	NOV 13/13	AR	LD	DRAWN BY	A.TAN	CHECKED BY	S.GURI
1	ISSUED FOR CONSTRUCTION	JUL 03/13	CS	SG	APPROVED BY	B.MINSHULL	PROJECT ENGINEER	S.GURI
0	ISSUED FOR CONSTRUCTION	APR 19/13	AT	SG	PROJECT MANAGER	B. MINSHULL	PROJECT ENGINEER	S.GURI
B	ISSUED FOR HAZOP	MAR 08/13	AT	SG	CUST PO	4100000964		
A	ISSUED FOR CUSTOMER APPROVAL	FEB 15/13	AT	SG				
REV	DESCRIPTION	DATE	BY	APR	APEGGA PERMIT No:	P8651	OPER. CODE	WORK ORDER

DEVON CANADA
FERRIER CPF DEEP CUT FEED
CATERPILLAR G3606LE
ARIEL JGD/4-1 SWEET

ENERFLEX
Calgary, Alberta,
Canada

P&I DIAGRAM
COMP. LUBE OIL/UTILITIES
JGCD4 - L2C

DWG NO 31979-02-113

SHT 2

REV 3