

002-UHG-02-3180/81/88
GLYCOL BLDG. HEATERS
MFG: RUFFNECK
MODEL: HP5-24
MAWP: 2068 kPag (300 PSIG)
MAWT: 150°C (300°F)

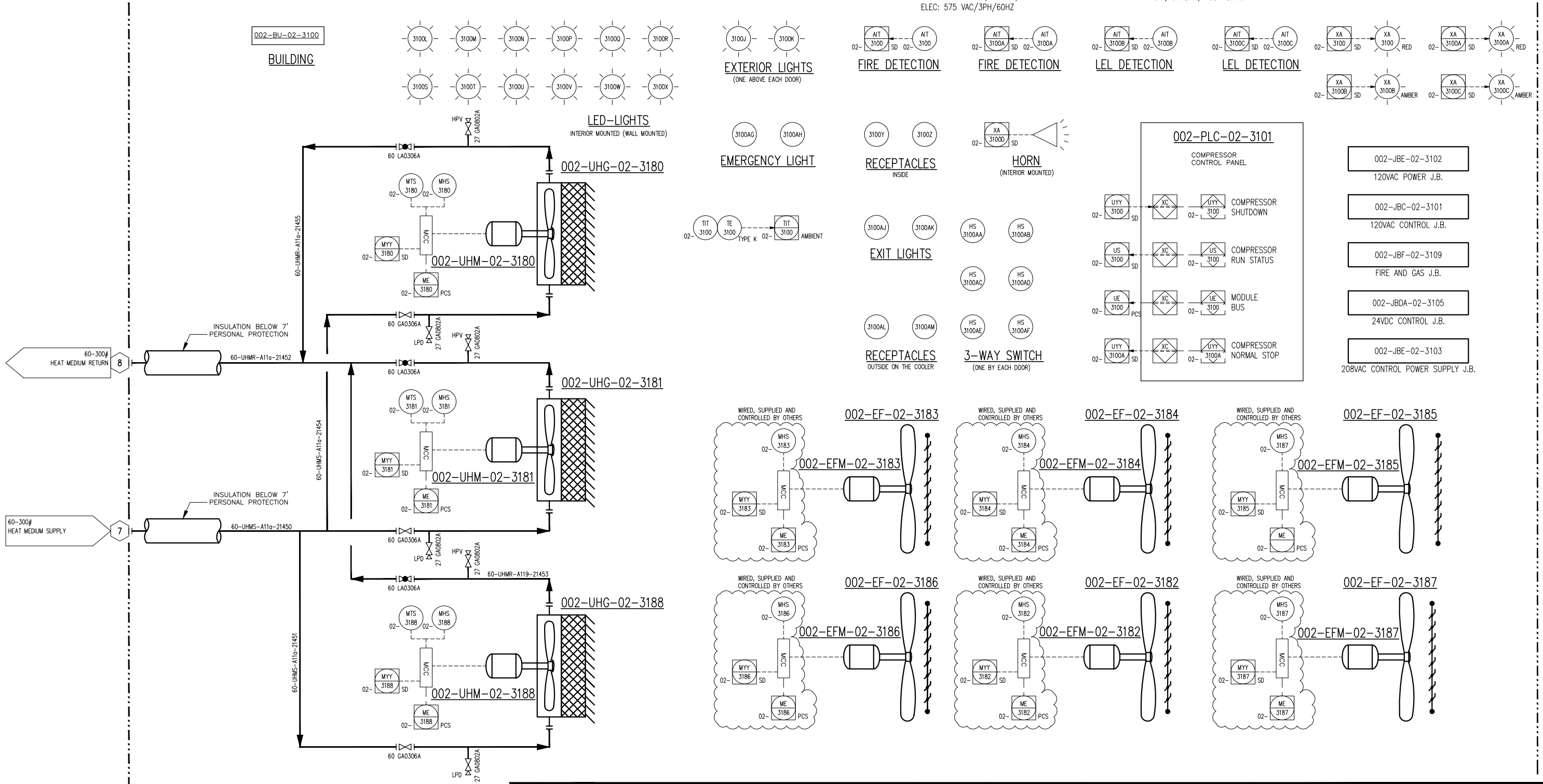
002-BU-02-3100
DEEP CUT FEED COMPRESSOR BUILDING
MAKE: NS1
MODEL: AENABXX480288186

002-UHM-02-3180/81/88
GLYCOL BLDG. HEATERS MOTORS
MFG: TECO
POWER: 0.5 HP
ELECTRICAL: 575VAC/60HZ/3PH

002-EFM-02-3182/83/84/85/86
BLDG. EXHAUST FAN MOTOR
MFG: MARATHON
POWER: 0.5 HP
ELECTRICAL: 575VAC/60HZ/3PH

002-EF-02-3182/83/84/85/86
BLDG. EXHAUST FAN
MFG: NS1
MODEL: BVDFVRE065036030
24"Ø LOW NOISE FAN
4200 SCFM @ 0.25" WC STATIC PRESSURE

002-PLC-02-3101
COMPRESSOR CONTROL PANEL
MAKE: SPARTAN CONTROLS
MODEL: REMVUE-500



**FINAL
AS BUILT**
NAME: C. SMITH DATE: JAN 02/14

4	FINAL AS BUILT	JAN 02/14	CS	SG	DATE	JAN 23/13	SCALE	NTS	DEVON CANADA FERRIER CPF DEEP CUT FEED CATERPILLAR G3606LE ARIEL JGD/4-1 SWEET	ENERFLEX Calgary, Alberta, Canada	P & I DIAGRAM DRIVE TRAIN/ BUILDING COMPONENTS					
3	FINAL AS BUILT	NOV 13/13	AR	SG	DRAWN BY	G.PAHL	CHECKED BY	S.GURI				APPROVED BY	B.MINSHULL			
2	REVISED TAGGING	AUG 26/13	AT	LD	PROJECT MANAGER		PROJECT ENGINEER									
1	ISSUED FOR CONSTRUCTION	JUL 03/13	CS	SG	B.MINSHULL		S.GURI									
0	ISSUED FOR CONSTRUCTION	APR 19/13	AT	SG	CUST PO											
B	ISSUED FOR HAZOP	MAR 08/13	AT	SG												
REV	DESCRIPTION	DATE	BY	APR	APEGGA PERMIT No: P8651		OPER. CODE	490 511 591	WORK ORDER	31979-02	DWG NO	31979-02-112	SHT	2	REV	4