

PIPE (GS-5210-A11g) AND VALVE CLASS (GS-5300-BA) FOR GLYCOL SUPPLY AND RETURN MANIFOLD:  
(REF TO: WCS-P-1304102A-02 AS WELL)

- GATE VALVE: 2" VELAN, CL300, RF, A216-WCB, FP, TRIM 8
- Y-STRAINER: 2" CL300, ASTM A216 GR. WCB, 1/8" PERF
- GATE AND GLOBE VALVE: 1" & 3/4" VELAN, CL 800, SW, SW x TE, A105N, RP, TRIM 8.
- BALL VALVE: 1" VELAN , 2000WOG, SW, A105N, RP, 316SS TRIM, FIRE TESTED API 607,DUAL PTFE/GRAPHITE PACKING, B7M.
- PIPING: 2" AND 1" ASTM A106-B SMLS, ASME B36.10M, CS, SCH80
- FITTING: CL3000-ASTM A234/A105N, S-80, ASTM A234-WPB-S. BOLT/NUT: B7 /2H
- FLANGE: CL300, SCH-80, ASTM A105N, ASME B16.5
- THERMOWELL: 2", CL300 RF, 316SS

#### LUBE OIL STORAGE TANK:

- TAG: 002-T-28-1020
- NOMINAL CAPACITY: 32 CU-M
- SIZE: 3353mmD x 3810mmH
- DESIGN PRESSURE: 3.45/0.25
- VACUUM KPAG
- DESIGN TEMPERATURE: 100C
- MDMT: -39C
- CORROSION ALLOWANCE: 1.5MM
- INSULATION: 50mm
- NOZZLES: CL 150 (EXCEPT CL300 N7 & N8)

#### LUBE OIL TANK AND TRANSFER PUMP PACKAGE

002-P-28-1030 / LUBE OIL TRANSFER PUMP

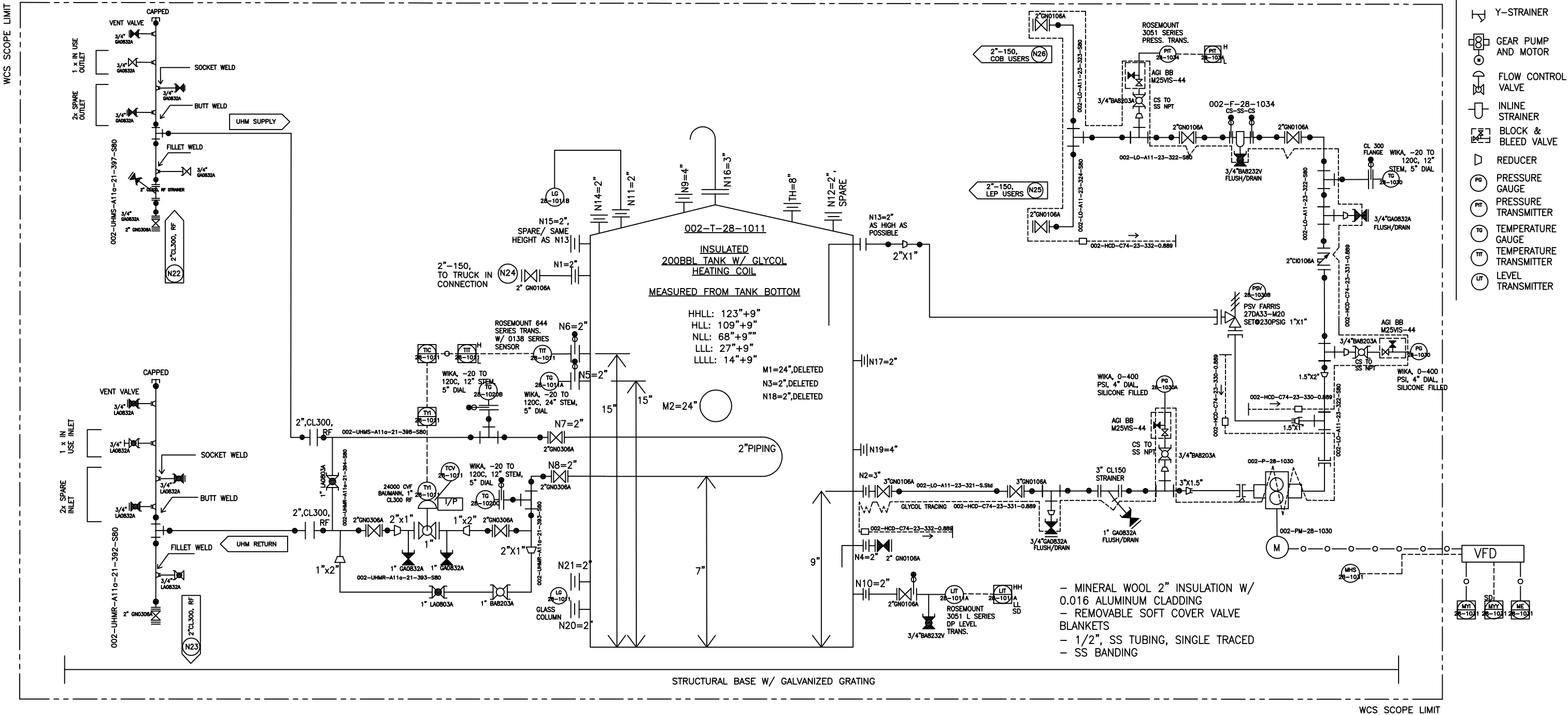
PUMPS: VIKING HJ-4193 INTERNAL GEAR, 1.5", CL300 FF ANSI FLANGE, INTERNAL RELIEF VALVE  
MAX.FLOW: 3320 LPH @ 1350kPag (195 Psi)@1150 RPM, BUNA-N MECHANICAL SEAL  
MOTOR: BALDOR ECP 83665T-5, IEEE 841, 5 HP/575V/3PH, 184T, 1750 RPM, TEFC, VFD READY, S.F.1.15  
(ALL 575 VOLT CONNECTIONS ARE BY OTHERS AT SITE)  
HAZARDOUS AREA RATING: CLASS 1, DIVISION 2, GROUP IIA, T3

PIPE (GS-5210-A11) AND VALVE CLASS (GS-5300-AA) FOR PUMP PACKAGE:

- GATE VALVE: 3", 2" VELAN , CL 150, RF, A216-WCB, FP, TRIM 8, 13CR DISC & STEM, STELLITE 6 SEAT.
- 1" AND 3/4" VELAN , CL 800, SW x TE, A105N, RP, TRIM 8, 13CR DISC & STEM, STELLITE 6 SEAT.
- BALL VALVE: 1" AND 3/4" NUTRON, 2000WOG, SW, SW x TE, A105, RP, PTFE SEAT, FIRE TESTED API 607, SOUR.
- 3/4" VELAN, 2000WOG, THxSW, RP, 316SS BODY AND BALL, PTFE, FIRE TESTED API 607
- SWING CHECK: 2" VELAN , CL 150 RF, RG, A216-WCB, TRIM 8, 13CR DISC & STEM, STELLITE 6 SEAT.
- Y-STRAINER: 3" ALBERTA , CL150 CS, A216-WCB, 1/8 PERF
- PIPING: 3",2",1" ASTM A106-B SMLS CARBON STEEL, SCH-80
- FITTING: CL3000, ASTM A234/A105N. BOLT/NUT: B7 /2H
- FLANGE: CL150, CL300, RF, SCH-80, ASTM A105N, ASME B16.5

#### LUBE OIL PACKAGE FILTER:

- TAG: 002-F-28-1034
- SIZE: 115 MM x 402 MM
- DESIGN PRESSURE: 10342 KPAG
- DESIGN TEMPERATURE: 400F
- MESH MATERIAL: SS
- MESH MICRON SIZE: 10
- PORT: CL150, 316SS RF
- GLYCOL TRACING:
- 1/ 2" SS TUBING, 0.035" THICKNESS
- 1/2" VELAN GATE VALVE, CL 800, TE, A105N, RP, TRIM 8.
- THERMOWELL: - 2", CL300RF, 316SS



GENERAL NOTES			No.	DATE	REVISION	DWN.	CHK.	APP.	DESIGN DATA:	
1.) THIS DRAWING MAY NOT BE DISCLOSED TO A THIRD PARTY OR REPRODUCED WITHOUT WRITTEN CONSENT.			0	21-JUNE-13	FIRST ISSUE	HM			ELASTOMERS: BUNA-N, VITON	
2.) ALL 575 VOLT CONNECTIONS ARE BY OTHERS AT SITE			1	30-JULY-13	UPDATED AS PER MARKUPS	HM			GASKETS: FLEXITALLIC FLEXICARB CGI SPIRAL WOUND, 316SS	
3.) ALL TAG NUMBERS ARE PRECEDED BY 002-			2	28-OCT-13	UPDATED AS PER AUG 13TH MARKUPS, AD'D THERMOWELL, SS BALL DRAIN VALVE, AGI BB VALVE.	HM			ELECTRICAL AREA CLASSIFICATION: CLASS 1 DIVISION 2 GROUP IIA - T3	
			3	30-JAN-14	ADDED PSV AND DOWNCOMER TO THE TANK AND TIE-IN POINTS	HM	TL			
			4	09-JUNE-14	AS PER MANUFACTURED	HM	TL			
			4	11-JUNE-14	COPY FOR O&M MANUAL, CORRECTED AS PER MANUFACTURED COPY	HM	TL			

**WAVE CONTROL**  
systems Ltd.  
DESIGN & MANUFACTURING  
OF FLUID CONTROL SYSTEMS

EDMONTON, ALBERTA.  
Tel:(780) 468-4320, Fax (780) 468-4933

CLIENT:	DEVON CANADA CORPORATION		
PROJECT:	DEVON FERRIER LIQUID EXTRACTION PLANT-SHALLOW CUT LUBE OIL PACKAGE		
SCALE:	JOB No.:	DWG. No.:	REV.
NTS	1304102	WCS-P-1304102A-01	5