

MAKE: RUFFNECK  
MODEL: 3ACPH: EFX-12A-2HXP  
MODEL: 9ACPH: EFX-16A-2HXP

001-EFM-01-1011/1012  
EXHAUST FAN MOTORS

MAKE: RUFFNECK

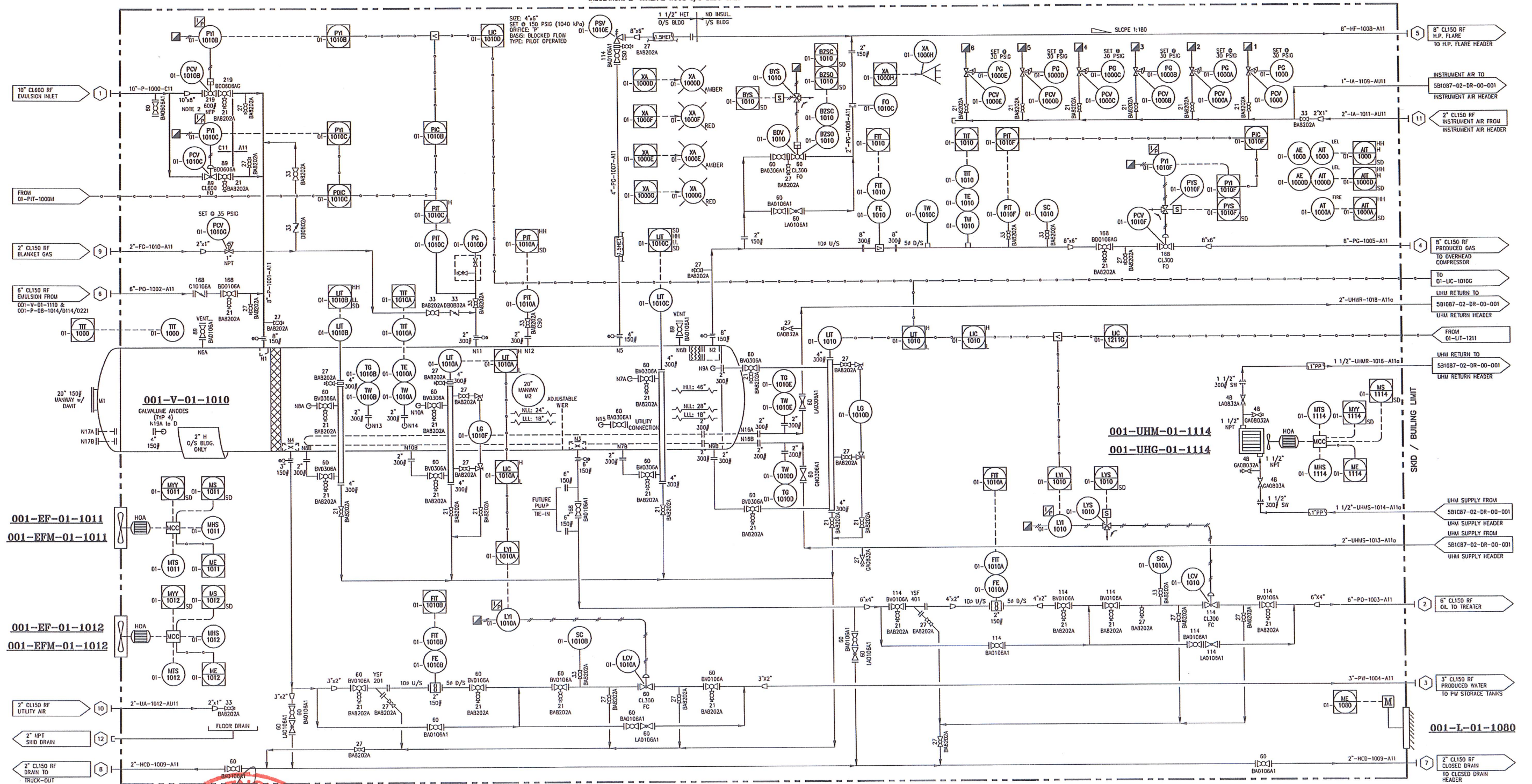
MODEL: 3ACPH: 575/3/60 - 1/2HP - 850CFM - T38 MOTOR  
MODEL: 9ACPH: 575/3/60 - 1/2HP - 1825CFM - T38 MOTOR

SIZE: 72" I.D. x 24'-0" S/S  
(1,828mm I.D. x 7,315mm S/S)  
MAWP: 150 PSIG @ -20/302°F FV @ 302°F  
(1,040 kPag @ 150°C)  
CA: 0.125" (3mm)  
INTERNAL COATING: HIGHLAND 74-HF (10-18 mils DFT)

SIZE: 28" x 28"  
PBX-4LG PARALLEL BLADE DAMPER  
c/w BELIMO 120V NFBUP-S ACTUATOR  
c/w BELIMO Z5260 EXPLOSION PROOF ENCLOSURE

MAKE: RUFFNECK  
MODEL: AH-24A-A7A1-A1-2H  
GLYCOL HEATER

MAKE: RUFFNECK  
MODEL: T38 MOTOR - 20" FAN  
CLASS 1DIV1&11 GROUP C&D  
575 / 3PH / 60Hz  
DUTY: 0.5HP (.373KW)



1. RS-485 COMMUNICATIONS.
2. CONTROL VALVE PCV-1010B TO HAVE: NO FAIL POSITION.

- ALL TRANSMITTERS AND SWITCHES ARE WIRED TO SKID EDGE JUNCTION BOX BY 5BLUE
- REMOTE CONTROL AND MONITORING TO BE BY CUSTOMER

4	UPDATED AS BUILT	RM/c		21/12/18
3	AS BUILT	SF		05/11/18
2	REVISED AS NOTED (HEATER DELETED)	BS		24/05/18
1	RE-ISSUED FOR CONSTRUCTION	RR		23/04/18
0	ISSUED FOR CONSTRUCTION	RR		04/03/18
C	RE-ISSUED FOR APPROVAL	BS		07/02/18
B	RE-ISSUED FOR APPROVAL	RR		11/01/18
A	ISSUED FOR APPROVAL	RR		03/01/18
11	NO RECORD	BY	CHK	RAT

**5Blue**  
Process Equipment Inc.

PROJECT: FERRIER CENTRAL PROCESSING FACILITY  
CENTRAL OIL BATTERY - SEPARATION & TREATMENT

TITLE: FREEWATER KNOCKOUT PACKAGE (001-PK-01-1000)  
P&ID

DRWN DHC	CHK	APP	SCALE NTS	DATE 19/12/12	DWG NO 581088-08-DB-00-001	SHT TTL 001	4
-------------	-----	-----	--------------	------------------	----------------------------------	-------------------	---