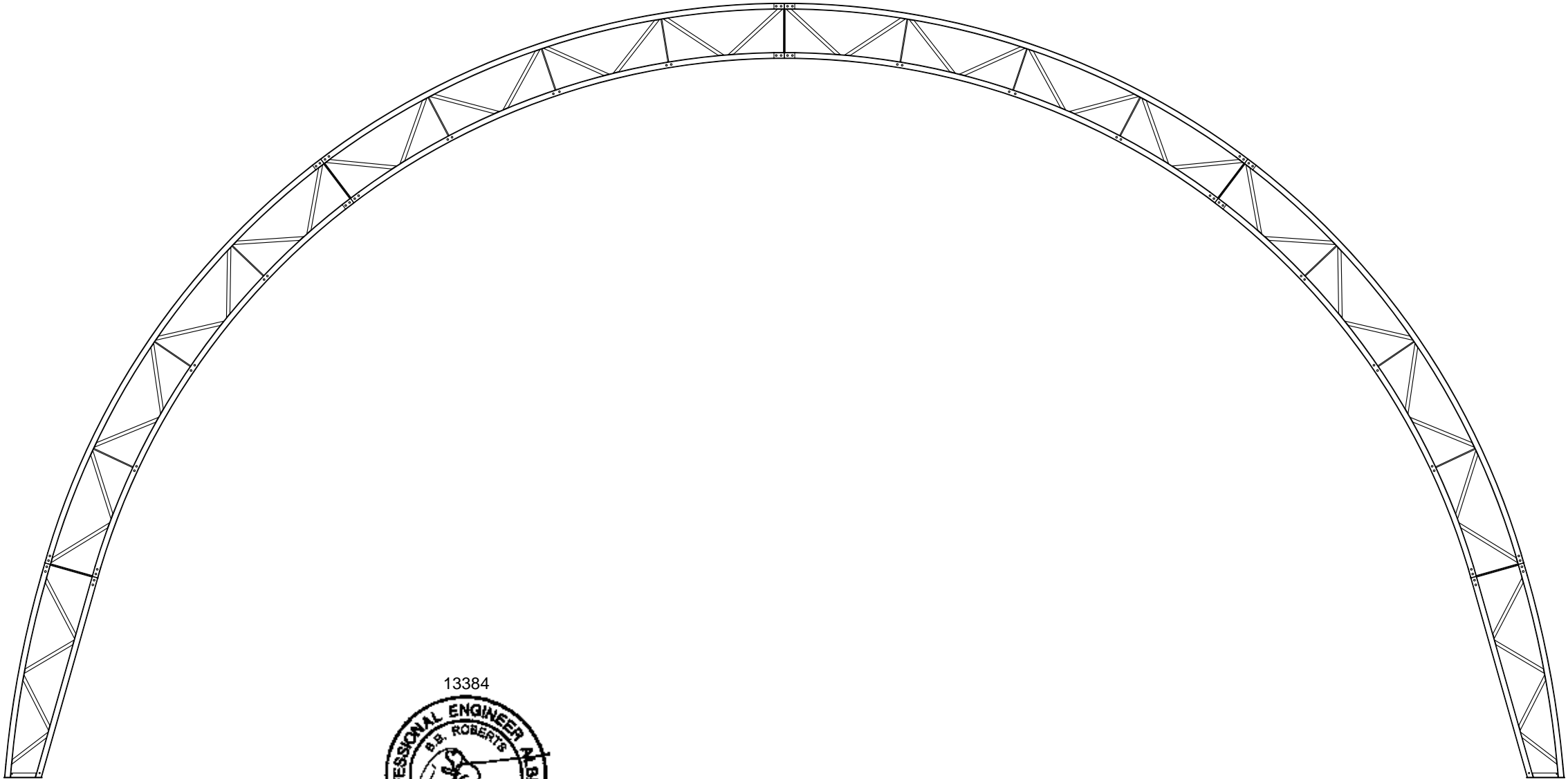



DRAWING SCHEDULE											
DWG #	DRAWING TITLE	REV	DATE	REV	DATE	REV	DATE	REV	DATE	REV	DATE
CP-1	COVER PAGE	1	20 JUN 13								
CP-2	PROJECT SUMMARY	1	20 JUN 13								
CP-3	MATERIAL SPECIFICATIONS	1	20 JUN 13								
FB-1	BASE PLATE LAYOUT	1	20 JUN 13								
FB-2	PROJECT LAYOUT	1	20 JUN 13								
FB-3	BUILDING PROFILE	1	20 JUN 13								
FB-4	BRACING LAYOUT	1	20 JUN 13								
EW-1	ENDWALL 1	1	20 JUN 13								
EW-2	ENDWALL 2	1	20 JUN 13								
BD-1	BASEPLATE DETAILS	1	20 JUN 13								
SD-1	STANDARD DETAILS 1	1	20 JUN 13								
SD-2	STANDARD DETAILS 2	1	20 JUN 13								
ED-1	ENDWALL DETAILS 1	1	20 JUN 13								
ED-2	ENDWALL DETAILS 2	1	20 JUN 13								
RV-1	ROOF VENT SUPPORT DETAILS	1	20 JUN 13								
CS-1	CHORD SUPPORT DETAILS	1	20 JUN 13								



June 27/13

		3815 Wanuskewin Road Saskatoon, SK, Canada S7P 1A4 Ph: 306.385.2888 Fax: 306.385.2717 www.norsemanstructures.com		DEALER NORSEMAN STRUCTURES SASKATOON, SK		CUSTOMER: DEVON CANADA CALGARY, AB		PROJECT: PLANT SIDE ROCKY MOUNTAIN HOUSE, AB	
DETAILER:	DWG REV	REVISED BY: DESCRIPTION		DATE		This drawing and the proprietary design is property of Norseman Structures any reproduction in whole or in part without the expressed written consent of Norseman Structures is prohibited.			
CA	1	RELEASED		20 JUN 13		This drawing is not to scale unless otherwise noted.			
CHECKER:						DRAWING TITLE: COVER PAGE			
						PROJECT ID:	ORDER ID:	DRAWING:	REV:
						-	S05262	CP-1	1

This project has been designed and fabricated in accordance with the following:

1. DESCRIPTION

Owner's Name and Address: Devon Canada
2000, 400-3rd Ave SW Calgary, AB

Building Supplier's Name and Address: Norseman Structures
3815 Wanuskewin Rd. Saskatoon, SK

Manufacturer's Name and Address: Norseman Structures
3815 Wanuskewin Rd. Saskatoon, SK

Site Location: Plant Site
Rocky Mountain House, AB

Legal Address: 11-2-39-8-W5M

Building Type: A608 - A-Series 60' With 8' Leg

Building Size: 60' x 100' @ 10' O.C.
(18.288m x 30.48m @ 3.048m O.C.)

Intended Use and Occupancy: F-3 - Low Hazard

Construction Type: PART 9

Fabric Type: FR

2. DESIGN STANDARDS

National Building Code of Canada (NBC 2010), Division B, Part 4: Structural Design
CAN/CSA S16-01, Limit States Design of Steel Structures
CAN/CSA S136-01, Cold-Formed Steel Structural Members
CAN/ULC S109, Flame Tests of Flame Resistant Fabrics and Films

3. MANUFACTURING STANDARDS

Fabrication in accordance with CAN/CSA S16 and CAN/CSA S136 as applicable.
Welding in accordance with CSA W59 and CAN/CSA-S136, as applicable
Norseman Structures is certified in accordance with CSA W47.1 Division 2
Welders have been qualified in accordance with CSA W47.1

4. DESIGN CRITERIA

Importance Category: Normal Hazard

Truss bracing is provided in accordance with CAN/CSA-S136, Clause D3

A) DEAD LOADS

I) Self-weight of building components
II) Collateral (hanging) load, not to exceed 0.26 psf (0.0125 kPa) as an allowance for mechanical, electrical, ceiling, sprinklers, etc, or any combination thereof

B) LIVE LOADS

Live loads determined in accordance with 4.1.5 of NBC 2010
Minimum Roof Live Load 14.4 psf (0.69 kPa)

C) SNOW LOADS

Snow loads determined in accordance with 4.1.6 of NBC 2010
Snow loads applied on any one and two adjacent spans of continuous purlins
Snow loads applied on any two adjacent spans of modular rigid frames with continuous roof beams

Importance Factor, Is	1.0
Ground Snow Load, Ss (1/50)	39.68 psf (1.90 kPa)
Roof Snow Load	33.83 psf (1.62 kPa)
Drift load considered	No
Associated Rain Load, Sr (1/50)	2.10 psf (0.10 kPa)
Wind Exposure Factor for Balanced Snow, Cw ₁	1.00
Wind Exposure Factor for Unbalanced Snow, Cw ₂	1.00

D) WIND LOADS

Wind loads determined in accordance with 4.1.7 of NBC 2010
Importance Factor, Iw 1.0
Reference Wind Pressure, q (1/50) 10.44 psf (0.50 kPa)
Exposure Factor, Ce 0.70
Building Enclosure Enclosed

Building Internal Pressure Category: 2

E) LOAD COMBINATIONS

Load combinations determined in accordance with section 4.1.3 of NBC 2010

5. Foundation Loads

The maximum forces at the foundation/supports due to the site loads listed are as follows:
Loads listed below are unfactored and have not been combined with any other load case.
Foundation designer to combine and factor as necessary.

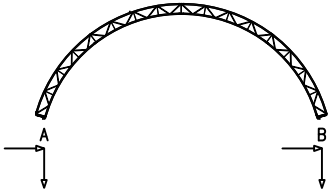
AT ANCHOR PIN

Load Case	Side A				Side B			
	Vertical		Horizontal		Vertical		Horizontal	
	kip	kN	kip	kN	kip	kN	kip	kN
Dead	-1.08	-4.80	-0.36	-1.60	-1.08	-4.80	0.36	1.60
Collateral	-0.08	-0.36	-0.03	-0.13	-0.08	-0.36	0.03	0.13
Uniform Live Load	-4.30	-19.13	-1.87	-8.32	-4.30	-19.13	1.87	8.32
Live Load Left	-2.41	-10.72	-0.70	-3.11	-0.82	-3.65	0.70	3.11
Live Load Right	-0.82	-3.65	-0.70	-3.11	-2.41	-10.72	0.70	3.11
Uniform Snow Load	-6.41	-28.51	-3.43	-15.26	-6.41	-28.51	3.43	15.26
Snow Load Left	-4.72	-21.00	-1.47	-6.54	-1.63	-7.25	1.49	6.63
Snow Load Right	-1.63	-7.25	-1.49	-6.63	-4.72	-21.00	1.47	6.54
Wind Right to Left	4.26	18.95	0.45	2.00	4.36	19.39	4.26	18.95
Wind Left to Right	4.36	19.39	4.26	18.95	4.26	18.95	-0.45	-2.00
Wind Parallel to Ridge Case	3.37	14.99	0.02	0.09	3.37	14.99	-0.02	-0.09
Wind Internal Pressure	1.35	6.01	0.01	0.04	1.35	6.01	-0.01	-0.04
Wind Internal Suction	-2.02	-8.99	-0.01	-0.04	-2.02	-8.99	0.01	0.04

Add 2.67 kip (11.88 kN) vertical and ±2.00 kip (8.90 kN) cases at gridlines 1, 2, 5, 6, 10 and 11 for cross bracing forces.

At Endwall Column Base

Load Case	Horizontal	Longitudinal
All Wind Load Cases	1.28 kip (5.69 kN)	5.02 kip (22.34 kN)



6. GENERAL REVIEW DURING CONSTRUCTION

The manufacturer does not provide general review during construction for regulatory purposes

7. The installation sequencing information is contained in the product erection manual

8. Manufacturer's Certificate No. under CSA A660: NOSTRO

9. CERTIFICATION BY ENGINEER

I, _____ a Professional Engineer registered or licensed to practice in the Province or Territory of _____, hereby certify that I have reviewed the design and manufacturing process for the steel building system described, I certify that the foregoing statements initialed by me are true.

Name:_____


Title:_____

Affiliation:_____

Date:_____ Signature:_____

PROFESSIONAL SEAL:



				3815 Wanuskewin Road Saskatoon, SK, Canada S7P 1A4 Ph: 306.385.2888 Fax: 306.385.2717 www.norsemanstructures.com		DEALER NORSEMAN STRUCTURES SASKATOON, SK		CUSTOMER: DEVON CANADA CALGARY, AB		PROJECT: PLANT SIDE ROCKY MOUNTAIN HOUSE, AB		
DETAILER:		DWG REV	REVISED BY: DESCRIPTION			DATE	This drawing and the proprietary design is property of Norseman Structures any reproduction in whole or in part without the expressed written consent of Norseman Structures is prohibited. This drawing is not to scale unless otherwise noted.					
CA		1	RELEASED			20 JUN 13						
CHECKER:							DRAWING TITLE: PROJECT SUMMARY					
							PROJECT ID: -		ORDER ID: S05262		DRAWING: CP-2	REV: 1

GENERAL
THIS DRAWING INCLUDING INFORMATION HEREON, REMAINS THE PROPERTY OF NORSEMAN STRUCTURES. IT IS PROVIDED SOLELY FOR ERECTING THE BUILDING DESCRIBED IN THE SALES ORDER AND SHALL NOT BE MODIFIED, REPRODUCED OR USED FOR ANY OTHER PURPOSE WITHOUT PRIOR WRITTEN APPROVAL OF NORSEMAN STRUCTURES.

THE GENERAL CONTRACTOR AND/OR THE ERECTOR IS SOLELY RESPONSIBLE FOR ACCURATE, GOOD QUALITY WORKMANSHIP IN ERECTING THIS BUILDING IN CONFORMANCE WITH THIS DRAWING, DETAILS REFERENCED IN THIS DRAWING AND INDUSTRY STANDARDS PERTAINING TO PROPER ERECTION INCLUDING THE PROPER USE OF TEMPORARY BRACING.

THIS BUILDING IS NOT DESIGNED TO BE LIFTED AS AN ASSEMBLED UNIT. NORSEMAN STRUCTURES IS NOT RESPONSIBLE FOR LOSSES AND/OR DAMAGE AS A RESULT OF LIFTING THIS BUILDING. IF, HOWEVER, IT HAS BEEN DETERMINED TO LIFT THIS BUILDING IT IS THE RESPONSIBILITY OF THE PERSON, FIRM OR COMPANY CONTRACTED TO LIFT THE BUILDING TO SECURE THE SERVICES OF A QUALIFIED ENGINEER TO ENSURE THE LIFT DOES NOT DAMAGE THE BUILDING AND TO DETERMINE AND FINALIZE ALL ASPECTS OF THE LIFT INCLUDING ALL PARTS/CONNECTIONS TO BE ADDED TO THE BUILDING TO FACILITATE THE LIFT.

NORSEMAN STRUCTURES IS NOT RESPONSIBLE FOR ERRORS, OMISSIONS OR DAMAGES INCURRED IN THE ERECTION OF THE COMPONENTS SHOWN ON THIS DRAWING, NOR FOR THE INSPECTION OF ERECTED COMPONENTS TO DETERMINE SAME.

THIS CERTIFICATION AND ENGINEERING SEAL APPLIES ONLY TO PRODUCTS DESIGNED AND FABRICATED BY NORSEMAN STRUCTURES FOR THE LOADING CONDITIONS DESIGNATED ON THESE DRAWINGS. CONCRETE FOUNDATIONS, STEEL COMPONENTS BY OTHERS AND ERECTION SUPERVISION ARE NOT THE RESPONSIBILITIES OF NORSEMAN STRUCTURES OR THE CERTIFYING ENGINEER. ALL DOORS, WINDOWS AND ROLL-UP CURTAINS MUST BE DESIGNED TO SUPPORT THE SITE WIND LOADING AND ARE RELIED ON TO BE CLOSED IN THE EVENT OF HIGH WINDS.

ANCHOR BOLTS
ANCHOR BOLT DIAMETERS ARE DETERMINED IN ACCORDANCE WITH CSA STANDARD CAN/CSA-S16.1 USING $F_y = 36$ KSI (248 MPa). ANCHOR BOLT LENGTHS AND LOAD TRANSFER TO THE FOUNDATION ARE TO BE DETERMINED BY OTHERS.

ANCHOR BOLT PROJECTIONS BASED ON NO GROUT ARE AS FOLLOWS: MIN. 2" – MAX. 3 1/2"

FOUNDATION MUST BE LEVEL, SQUARE AND SMOOTH. ANCHOR BOLTS MUST BE ACCURATELY PLACED AS SHOWN ON THE DRAWINGS.

FINISHED FLOOR ELEVATIONS AND UNDERSIDE OF BASE PLATE IS 100'-0" (1000.000mm) UNLESS NOTED.

ERECTION
THE ERECTOR MUST PROVIDE SAFE WORKING CONDITIONS AND PRACTICES CONFORMING TO ALL SAFETY REGULATIONS. ALL LIFTING DEVICES ARE TO BE SPECIFICALLY DESIGNED TO LIFT THE VARIOUS BUILDING COMPONENTS. SLINGS AND SPREADERS BARS TO BE USED TO PREVENT PERMANENT DEFORMATION OF ALL STRUCTURAL COMPONENTS.

ERECTION SHOULD START AT A BRACED BAY. ERECT AND TEMPORARILY SUPPORT TRUSSES. USE TEMPORARY BRACING AS REQUIRED TO ENSURE STABILITY OF THE FRAMES. INSTALL PURLINS AND CROSS BRACING. PLUMB AND SQUARE TRUSSES IN ACCORDANCE WITH CAN/CSA-S16.1 AND OSHA 29 CFR PART 1926 – SAFETY STANDARD FOR STEEL ERECTION.

STRUCTURAL FRAMING MEMBERS ARE CONSIDERED PLUMB, LEVEL AND ALIGNED WHEN VARIANCE DOES NOT EXCEED 1:500.

STRUCTURAL BOLTS
ALL COUPLER FLANGE BOLTS SHALL CONFORM TO ASTM A325 WITH ASTM A563 NUTS, AND ASTM F436 FLAT WASHERS.
A325 BOLTS REQUIRE PRE-TENSIONING TO MINIMUM TENSION VALUES AS SHOWN IN THE TABLE BELOW.

ALL 1.25-INCH DIAMETER BOLTS SHALL COMFORM TO ASTM A325 WITH ASTM A563 NUTS, AND ASTM F436 WASHERS, INSTALLED SNUG TIGHT AS DEFINED BY CISC.

ALL OTHER DIA HEX BOLTS CONFORM TO SAE 429 GR.5 OR EQUIVALENT.
ALL BOLTS SHALL BE PLATED / GALVANIZED OR PROVIDED WITH AN ADDITIONAL CORROSION RESISTANT TOP COAT.
HEX NUTS CONFORM TO SAE 995 SPEC. ANSI/ASME B18.2.2 – GRADE 5 UNLESS NOTED
SELF DRILLING SCREWS CONFORM TO SAE J78

ALL OTHER CONNECTIONS REQUIRE SNUG TIGHTENING, UNLESS NOTED.

TABLE A – BOLT PRE-TENSION

SIZE		A325	
in	mm	kips	kN
1/2	13	12	54
5/8	16	19	85
3/4	19	28	125

TABLE B – BOLTED CONNECTION TORQUE VALUES

SIZE		Grade 5	
Dia. Inch	Threads Per Inch	Min Tensile ksi	Torque Dry ft-lbs
1/2	13	120	68
5/8	11	120	135
3/4	10	120	240
7/8	9	120	386
SIZE		A325	
1/2	13	120	125
5/8	11	120	198
3/4	10	120	350
1 1/4	7	105	N/A

*BEARING CONNECTIONS USING NYLON INSERT LOCK NUTS REQUIRE NO TORQUE VALUE.

MATERIAL SPECIFICATIONS.

STRUCTURAL STEEL CONFORMS TO THE FOLLOWING SPECIFICATIONS:

PLATES – CSA G40.21 44W ASTM A 36 – GR 44W
H.S.S. > 3/16" WALL – ASTM A500C F_y –50ksi
≤ 3/16" WALL (GATORSHIELD) – GRADE C as per ASTM A500C
7ga WALL (GATORSHIELD) – G40.21-50W

STRUCTURAL CABLES CONFORM TO THE FOLLOWING SPECIFICATIONS:

THIMBLE – FEDERAL SPECIFICATION (USA) FF-T-276b
TURNBUCKLES – FEDERAL SPECIFICATION (USA) FF-T-791b
GALVANIZED CARBON STEEL CABLE – FEDERAL SPECIFICATION (USA) RR-W410D

PLATES & HSS VERTICALS
COATINGS OF STRUCTURAL PLATES AND HSS ARE HOT-DIPPED GALVANIZED TO A NORMAL COATING ZINC WEIGHT OF 2.0oz/sq ft (600g/sq m) (3.4mil).

GATORSHIELD
H.S.S. ARE IN-LINE GALVANIZED TO A NOMINAL COATING ZINC WEIGHT OF 0.6oz/sq ft (180g/sq m)(1.0mil).

CHROMATE CONVERSION COATING APPLIED OVER GALVANIZED SURFACE TO PROVIDE ADDITIONAL CORROSION PROTECTION.

CLEAR ORGANIC POLYMER APPLIED AS THE TOP SURFACE COAT TO RETARD OXIDATION, ENHANCE SURFACE APPEARANCE AND PROVIDE PRIMER BASE.
RECONDITIONING OF TRUSS SURFACE AT WELD LOCATION AS PER NACE NO.1/SSPC-SP5 WHITE METAL BLAST CLEANING
THERMAL ZINC SPRAY AS PER SSPC-CS 23.00 / AWS C2.23 / NACE #12, SPECIFICATION FOR APPLICATION OF THERMAL SPRAY COATINGS.

ALL GATORSHIELD WILL DEMONSTRATE THE ABILITY TO WITHSTAND 1800 HOURS OF ACCELERATED SALT FOG TESTING TO THE CONDITION OF 5% SURFACE RED RUST, WHEN TESTED IN ACCORDANCE WITH ASTM B117 STANDARDS.

FABRIC / LINER NOTES
REMOVAL OF FABRIC OF ALTERATION WITHOUT PRIOR AUTHORIZATION IS PROHIBITED.
ALL TEARS MUST BE PATCHED IMMEDIATELY TO AVOID WARRANTY PROBLEMS.

EXTERIOR FABRIC WILL DEFLECT UNDER LOAD, THEREFORE ALL BUILDING ACCESSORIES (LIGHTING, HVAC, SPRINKLERS, ETC) MUST BE LOCATED BENEATH THE INNER CHORD OF THE TRUSS.
ANYTHING ABOVE THIS MUST BE REVIEWED AND APPROVED IN WRITING BY NORSEMAN STRUCTURES OR SEVERE DAMAGE TO THE BUILDING AND ACCESSORIES MAY RESULT FROM FAILURE TO COMPLY WITH THIS REQUIREMENT.

FABRIC SPECIFICATIONS		
ALL POLYETHYLENE MEMBRANES WILL POSSESS THE FOLLOWING MINIMUM SPECIFICATIONS:		
PHYSICAL PROPERTIES	DESCRIPTION	
BASE SCRIM	WOVEN HDPE SCRIM C/W UV	HIGH DESITY POLYETHYLENE, WITH UV INHIBITORS.
COATING THICKNESS	4 mil (94 gsm) EA. SIDE	AVERAGE 4 mil EXTERIOR COATING ON EACH SIDE OF BASE SCRIM
SIDE		MODIFIED LOW DENSITY POLYETHYLENE COATING WITH UV INHIBITORS
SURFACE TYPE	MODIFIED LDPE C/W UV	AVERAGE ±5%
TOTAL FABRIC WEIGHT	12.0 oz. / sq yd. (407 gsm)	

STRENGTH	TEST STANDARD
THICKNESS	23mils (0.59mm)
GRAB TENSILE STRENGTH	350 lbs (1555N)
TONGUE TEAR STRENGTH	110 lbs (489N)
STRIP TENSILE STRENGTH	240 lbs/inch (2100N/5cm)
MULLEN BURST	675 psi (4657 KPa)
COLD CRACK	PASS -60°C
% LIGHT TRANSMISSION	DW-20.9% WHITE/WHITE
UV & WEATHERING	>90% STRENGTH RETENTION AFTER 2000HRS
WATER VAPOR TRANSMISSION	0.038grains/h/ftsq/inHg(perms)
	2.16 ng/Pa/s/msq
IRE	TEST STANDARD
SCALE FLAME SPREAD	FSCI: 10 SD: 65
	ASTM E-84-0T

ROOF PLAN NOTES
UNLESS NOTED, USE ø5/8" (16mm) BOLTS FOR PURLIN TO TRUSS, CABLE OR ROD BRACING TO TRUSS AND ANGLES TO TRUSS FOR ALL CONNECTIONS.

CABLE / ROD AND PURLIN BRACING ARE AN INTEGRAL PART OF THE TRUSS STRUCTURAL SYSTEMS AND SHOULD BE PROPERLY INSTALLED PRIOR TO ERECTION OF FABRIC ROOF AND ENDWALL PANELS. REMOVAL OR ALTERATION OF ANY BRACING WITHOUT PRIOR AUTHORIZATION FROM NORSEMAN STRUCTURES INC. IS PROHIBITED.

ELEVATION NOTES HOLES REQUIRED IN HSS COLUMNS AND HEADERS FOR FRAMED OPENINGS, DOOR OR WINDOW POST CONNECTIONS TO BE BY ERECTOR.

WALK DOOR, WINDOW AND FRAMED OPENING POSTS TO BE FIELD ANCHORED TO CONCRETE, IN ACCORDANCE WITH "HILTI KWIK-BOLTS" SPECIFICATIONS OR SIMILAR.

PARTITION WALL NOTE
FIELD INSTALLATION OF PARTITION WALL TO UNDERSIDE OF ANY ARCH FRAMING MEMBERS MUST ALLOW FOR VERTICAL BUILDING DEFLECTION. CONTACT NORSEMAN STRUCTURES INC. FOR REQUIRED CLEARANCES.


MATERIAL STORAGE
GALVANIZED, ALUMINIZED, AND COLORED MATERIALS ARE SUBJECT TO CORROSION AND DISCOLORATION IF THEY ARE IMPROPERLY STORED. SHORT TERM JOB SITE STORAGE OF STEEL COMPONENTS MAY BE TOLERATED, PROVIDED CARE IS TAKEN TO KEEP MATERIALS DRY AT ALL TIMES. WHEN TRUSSES ARE TO BE STORED OUTDOORS, THEY SHOULD BE PLACED AT AN ANGLE SUFFICIENT TO PROMOTE GOOD DRAINAGE. IN ADDITION, SEVERAL INCHES OF CLEARANCE MUST BE PROVIDED BETWEEN THE LOWER END AND THE GROUND TO ALLOW VENTILATION.

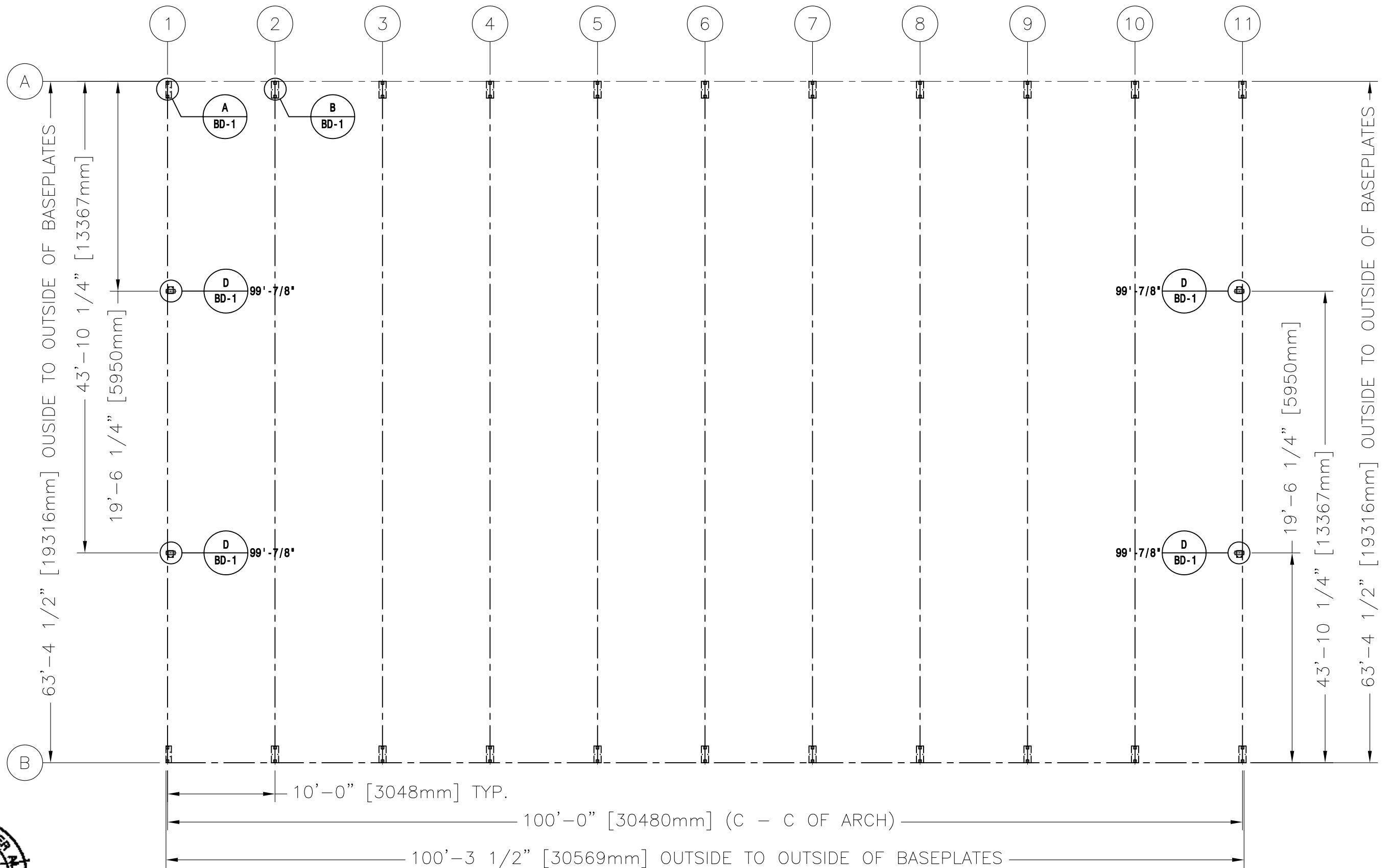
NOTE: NORSEMAN STRUCTURES INC. WILL NOT BE HELD RESPONSIBLE FOR MATERIALS WHICH ARE IMPROPERLY PROTECTED AFTER DELIVERY.

13384



June 27/13

 <div>3815 Wanuskewin Road Saskatoon, SK, Canada S7P 1A4 Ph: 306.385.2888 Fax: 306.385.2717 www.norsemanstructures.com</div>				DEALER NORSEMAN STRUCTURES SASKATOON, SK	CUSTOMER: DEVON CANADA CALGARY, AB	PROJECT: PLANT SIDE ROCKY MOUNTAIN HOUSE, AB			
DETAILER:	DWG REV	REVISED BY: DESCRIPTION		DATE	This drawing and the proprietary design is property of Norseman Structures any reproduction in whole or in part without the expressed written consent of Norseman Structures is prohibited. This drawing is not to scale unless otherwise noted.	DRAWING TITLE:			
CA	1	RELEASED		20 JUN 13		MATERIAL SPECIFICATIONS			
CHECKER:						PROJECT ID:	ORDER ID:	DRAWING:	REV:
						-	S05262	CP-3	1



3815 Wanuskewin Road
Saskatoon, SK, Canada S7P 1A4
Ph: 306.385.2888 Fax: 306.385.2717
www.norsemanstructures.com

DEALER
NORSEMAN STRUCTURES
SASKATOON, SK

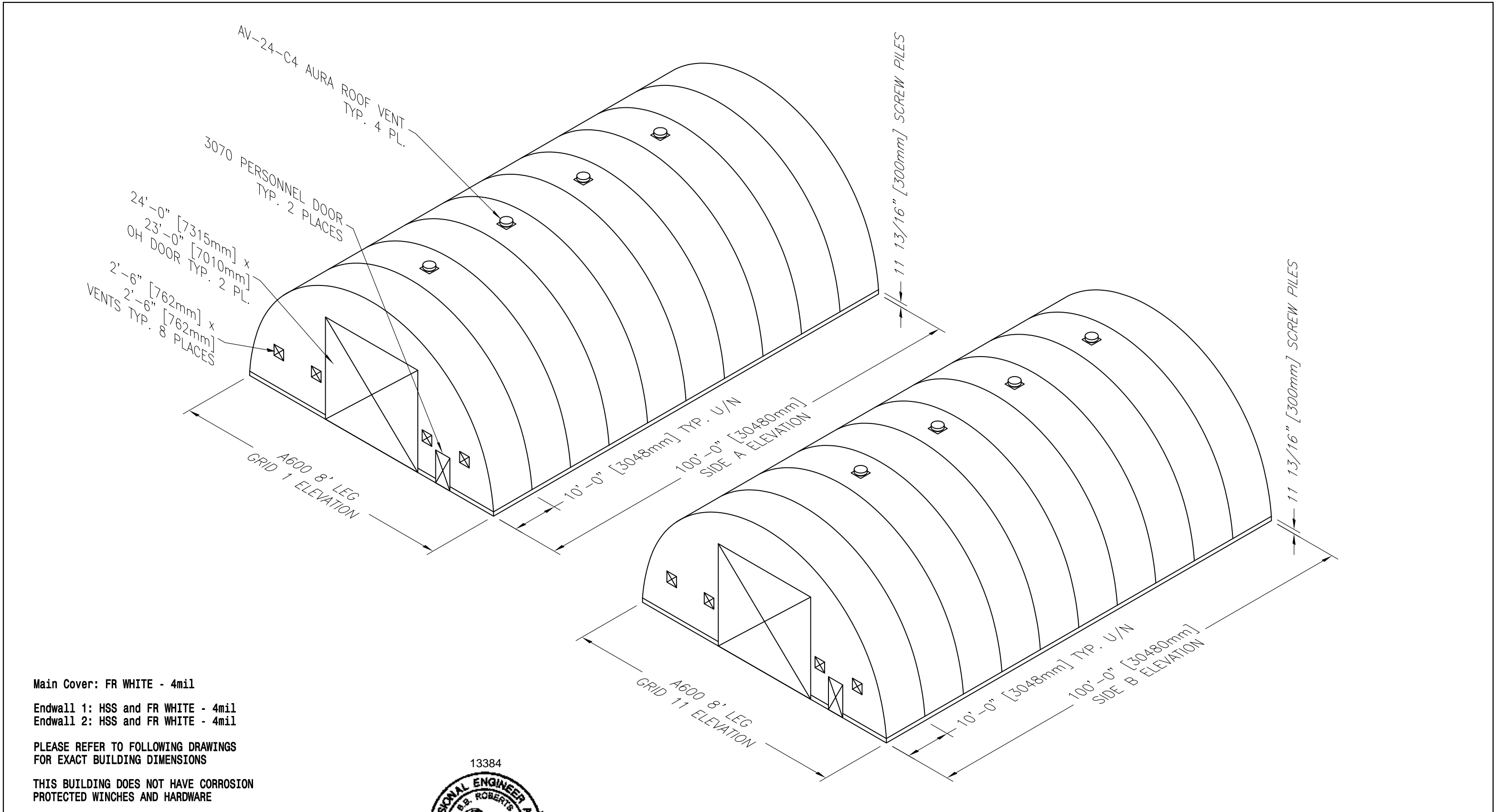
CUSTOMER: PROJECT:
DEVON CANADA PLANT SIDE
CALGARY, AB ROCKY MOUNTAIN HOUSE, AB

DETAILER:	DWG REV	REVISED BY: DESCRIPTION	DATE
CA	1	RELEASED	20 JUN 13
CHECKER:			

This drawing and the proprietary design is property of Norseman Structures any reproduction in whole or in part without the expressed written consent of Norseman Structures is prohibited.

This drawing is not to scale unless otherwise noted.

DRAWING TITLE:			
BASEPLATE LAYOUT 1			
PROJECT ID:	ORDER ID:	DRAWING:	REV:
-	S05262	FB-1	1

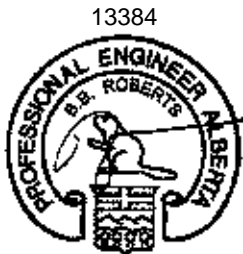


Main Cover: FR WHITE - 4mil


Endwall 1: HSS and FR WHITE - 4mil
Endwall 2: HSS and FR WHITE - 4mil

PLEASE REFER TO FOLLOWING DRAWINGS
FOR EXACT BUILDING DIMENSIONS

THIS BUILDING DOES NOT HAVE CORROSION
PROTECTED WINCHES AND HARDWARE



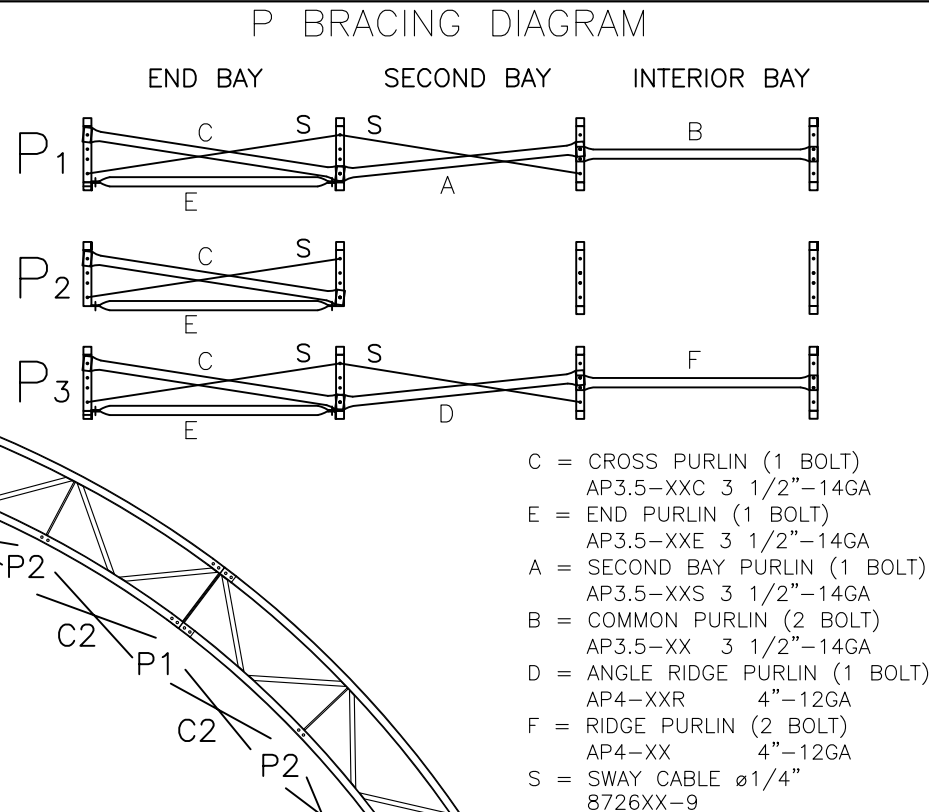
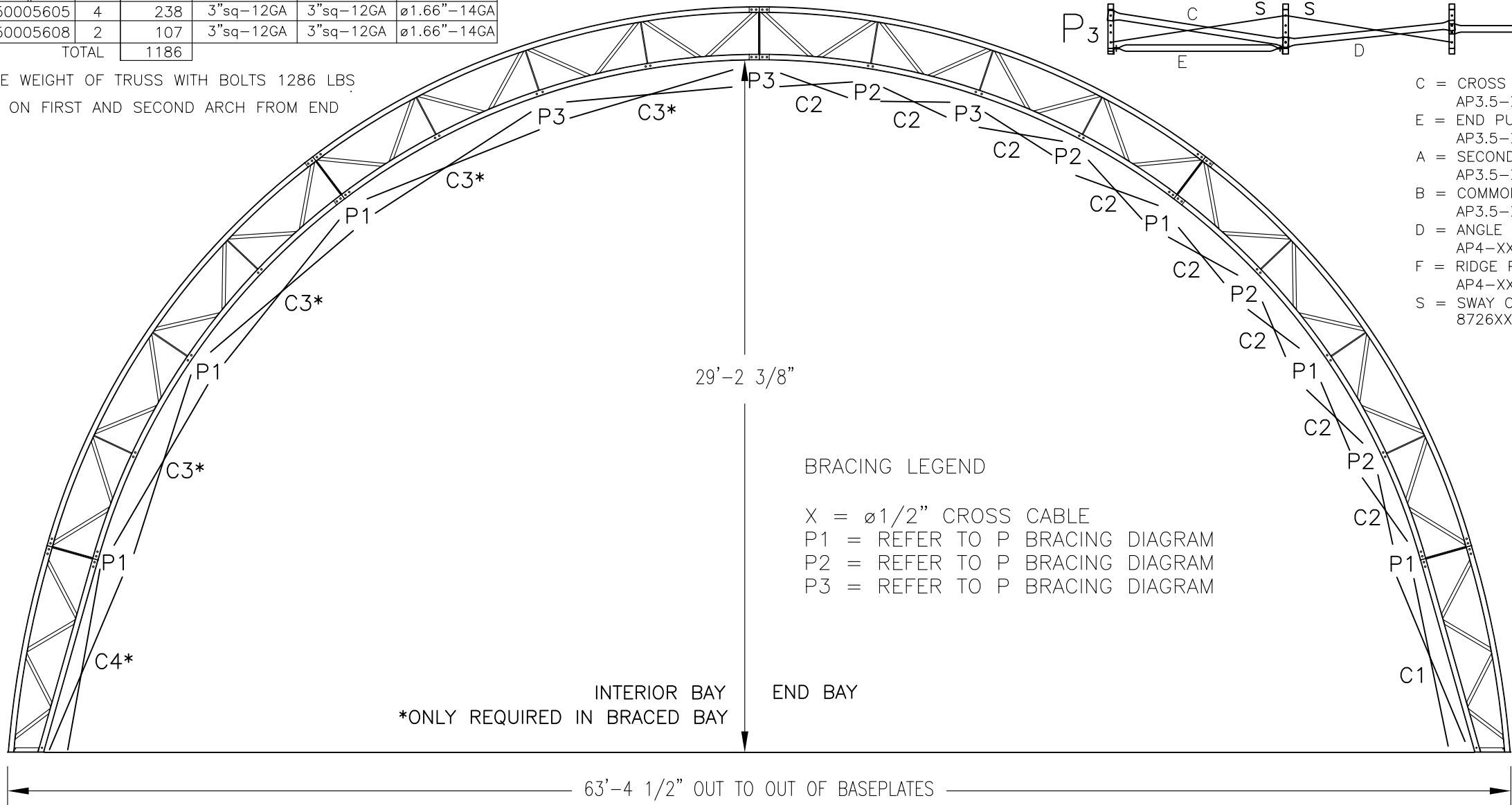
June 27/13

 NORSEMAN STRUCTURES				3815 Wanuskewin Road Saskatoon, SK, Canada S7P 1A4 Ph: 306.385.2888 Fax: 306.385.2717 www.norsemanstructures.com		DEALER NORSEMAN STRUCTURES SASKATOON, SK		CUSTOMER: DEVON CANADA CALGARY, AB		PROJECT: PLANT SIDE ROCKY MOUNTAIN HOUSE, AB				
DETAILER:	DWG REV	REVISED BY: DESCRIPTION			DATE		This drawing and the proprietary design is property of Norseman Structures any reproduction in whole or in part without the expressed written consent of Norseman Structures is prohibited. This drawing is not to scale unless otherwise noted.							
CA	1	RELEASED			20 JUN 13									
CHECKER:							DRAWING TITLE: PROJECT LAYOUT							
							PROJECT ID: -		ORDER ID: S05262		DRAWING: FB-2		REV: 1	

END ARCH						
MARK#	ITEM#	QTY	WEIGHT	IC	OC	WB
**R4	50005600	4	254	3"sq-12GA	3"sq-12GA	ø1.66"-14GA
8'RL	50005603	1	104	3"sq-12GA	3"sq-12GA	ø1.66"-14GA
8'LL	50005604	1	104	3"sq-12GA	3"sq-12GA	ø1.66"-14GA
TOTAL			1186			

INTERIOR TRUSS ARCH U/N						
MARK#	ITEM#	QTY	WEIGHT	IC	OC	WB
R4	50005605	4	238	3"sq-12GA	3"sq-12GA	ø1.66"-14GA
8'CL	50005608	2	107	3"sq-12GA	3"sq-12GA	ø1.66"-14GA
TOTAL			1186			

APPROXIMATE WEIGHT OF TRUSS WITH BOLTS 1286 LBS
 **REQUIRED ON FIRST AND SECOND ARCH FROM END




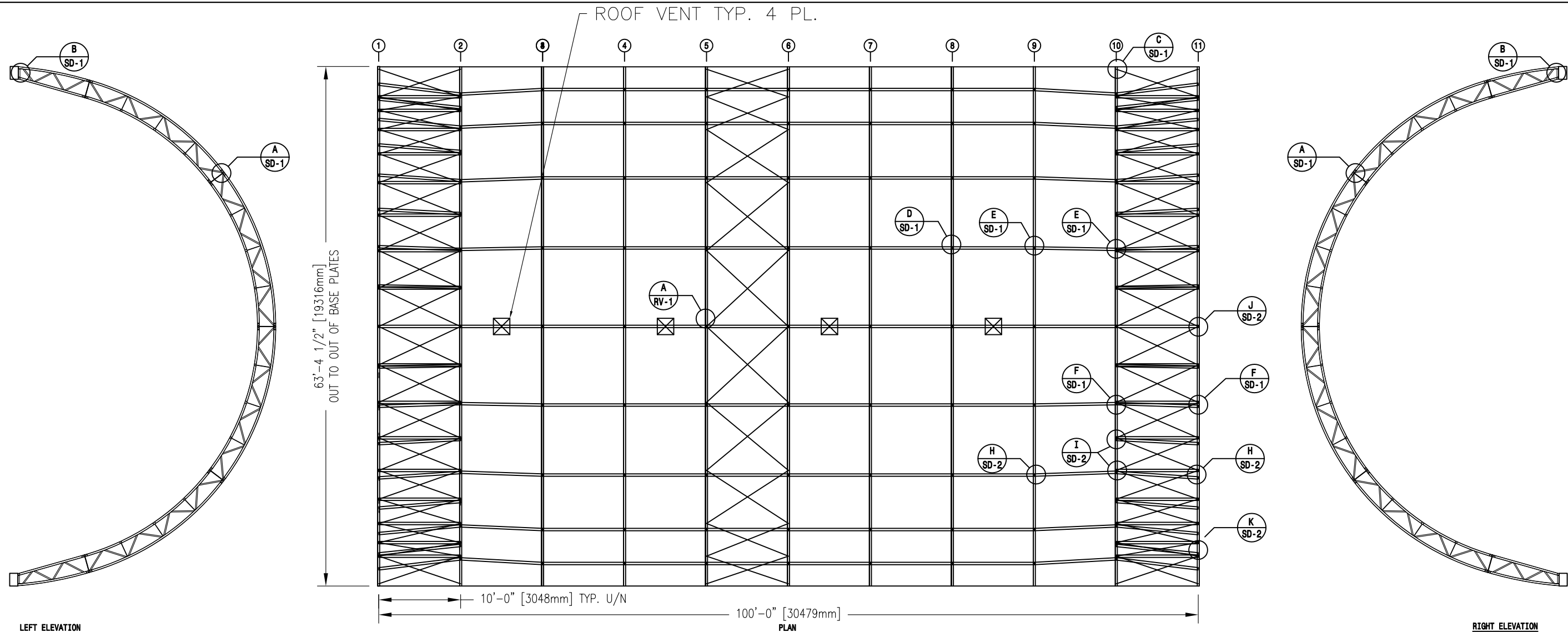
BRACING LEGEND

X = ø1/2" CROSS CABLE
 P1 = REFER TO P BRACING DIAGRAM
 P2 = REFER TO P BRACING DIAGRAM
 P3 = REFER TO P BRACING DIAGRAM

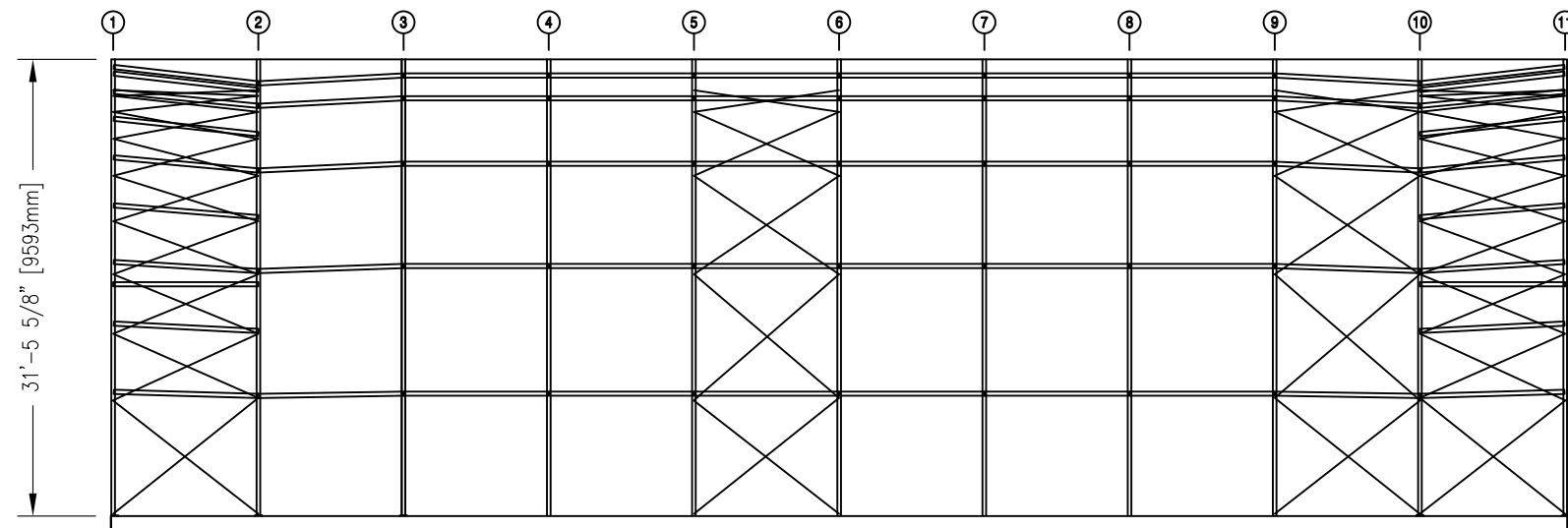
A608	ITEM#	16' OC LENGTH (")	15' OC LENGTH (")	14' OC LENGTH (")	13' OC LENGTH (")	12' OC LENGTH (")	11' OC LENGTH (")	10' OC LENGTH (")	9' OC LENGTH (")	8' OC LENGTH (")	7' OC LENGTH (")	6' OC LENGTH (")	5' OC LENGTH (")
C1	868XXX-12	207	197	186	176	166	156	147	138	129	121	114	107
C2	868XXX-12	191	179	168	157	145	134	123	112	102	91	82	72
C3	868XXX-12	219	209	199	189	180	170	161	153	145	138	131	125
C4	868XXX-12	211	200	190	180	170	160	151	142	133	125	118	111



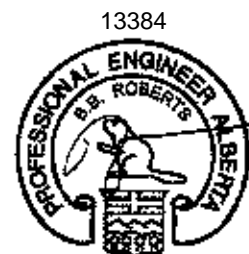
 <div>NORSEMAN STRUCTURES</div>				3815 Wanuskewin Road Saskatoon, SK, Canada S7P 1A4 Ph: 306.385.2888 Fax: 306.385.2717 www.norsemanstructures.com				DEALER NORSEMAN STRUCTURES SASKATOON, SK				CUSTOMER: DEVON CANADA CALGARY, AB				PROJECT: PLANT SIDE ROCKY MOUNTAIN HOUSE, AB							
DETAILER:		DWG REV		REVISED BY: DESCRIPTION						DATE		This drawing and the proprietary design is property of Norseman Structures any reproduction in whole or in part without the expressed written consent of Norseman Structures is prohibited. This drawing is not to scale unless otherwise noted.											
CA		1		RELEASED						20 JUN 13													
CHECKER:												DRAWING TITLE: BUILDING PROFILE				PROJECT ID:		ORDER ID:		DRAWING:		REV:	
-																-		S05262		FB-3		1	



RIDGE PURLINS ARE 4"x12GA
ALL OTHER PURLINS ARE 3.5"x14GA



BUILDING BASEPLATES ELEV. 100'-0"
BUILDING BASEPLATES ELEV. 99'-1/8"



June 27/13



3815 Wanuskewin Road
Saskatoon, SK, Canada S7P 1A4
Ph: 306.385.2888 Fax: 306.385.2717
www.norsemanstructures.com

DEALER
NORSEMAN STRUCTURES
SASKATOON, SK

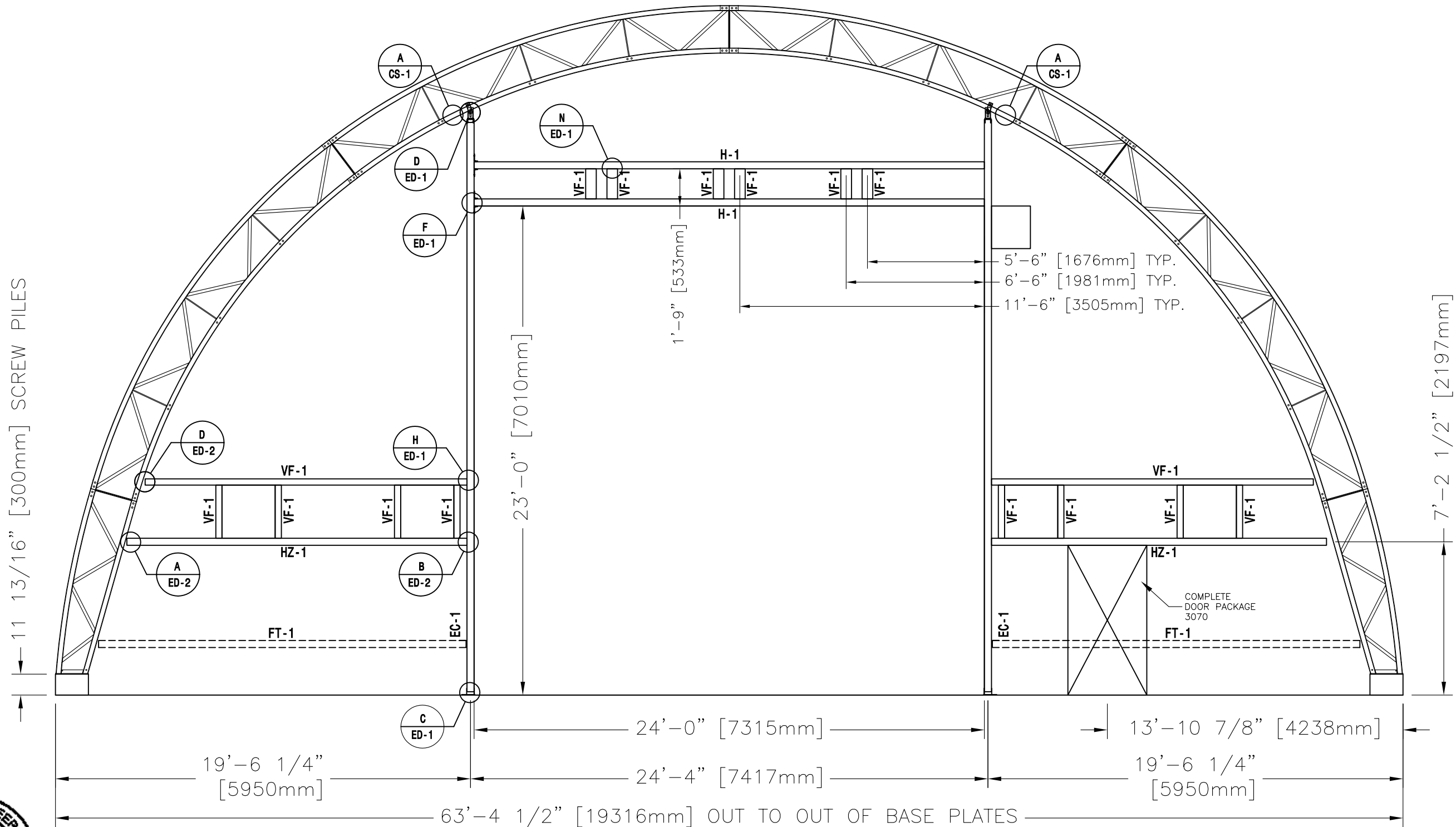
CUSTOMER: PROJECT:
DEVON CANADA PLANT SIDE
CALGARY, AB ROCKY MOUNTAIN HOUSE, AB

DETAILER:	DWG REV	REVISED BY: DESCRIPTION	DATE
CA	1	RELEASED	20 JUN 13
CHECKER:			

This drawing and the proprietary design is property of Norseman Structures any reproduction in whole or in part without the expressed written consent of Norseman Structures is prohibited.
This drawing is not to scale unless otherwise noted.

DRAWING TITLE: BRACING LAYOUT			
PROJECT ID: -	ORDER ID: S05262	DRAWING: FB-4	REV: 1

Item	Qty	Description	Weight
EC-1	2	HSS 4x10x1/4x323" (697721)	603
H-1	2	HSS 4x8x1/4x288"	456
HZ-1	2	HSS4x4x10ga-191EH	100
VF-1	-	6C14	.
FT-1	-	FT2x3x14GA CUT TO FIT	.



3815 Wanuskewin Road
Saskatoon, SK, Canada S7P 1A4
Ph: 306.385.2888 Fax: 306.385.2717
www.norsemanstructures.com

DEALER
NORSEMAN STRUCTURES
SASKATOON, SK

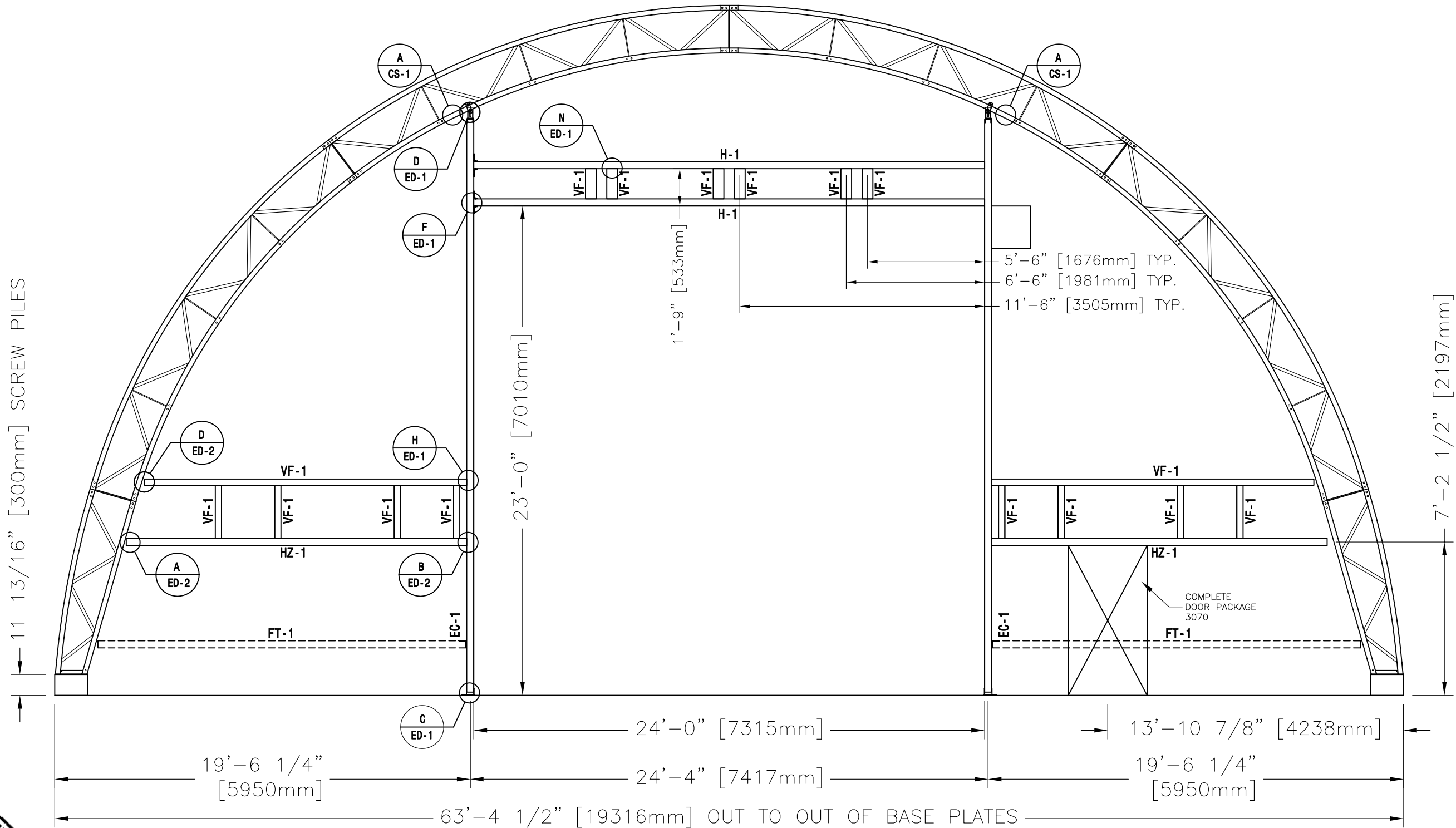
CUSTOMER: PROJECT:
DEVON CANADA PLANT SIDE
CALGARY, AB ROCKY MOUNTAIN HOUSE, AB

DETAILER:	DWG REV	REVISED BY: DESCRIPTION	DATE
CA	1	RELEASED	20 JUN 13
CHECKER:			

This drawing and the proprietary design is property of Norseman Structures any reproduction in whole or in part without the expressed written consent of Norseman Structures is prohibited.
This drawing is not to scale unless otherwise noted.

DRAWING TITLE:			
ENDWALL 1			
PROJECT ID:	ORDER ID:	DRAWING:	REV:
-	S05262	EW-1	1

Item	Qty	Description	Weight
EC-1	2	HSS 4x10x1/4x323" (697721)	603
H-1	2	HSS 4x8x1/4x288"	456
HZ-1	2	HSS4x4x10ga-191EH	100
VF-1	-	6C14	.
FT-1	-	FT2x3x14GA CUT TO FIT	.



3815 Wanuskewin Road
Saskatoon, SK, Canada S7P 1A4
Ph: 306.385.2888 Fax: 306.385.2717
www.norsemanstructures.com

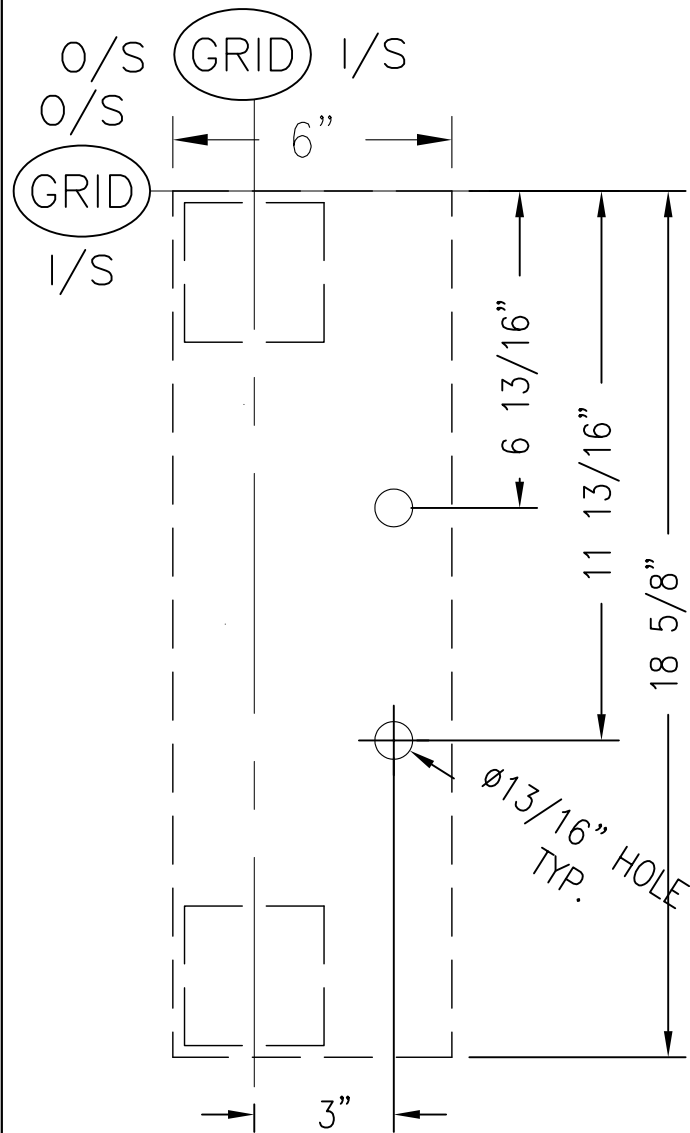
DEALER
NORSEMAN STRUCTURES
SASKATOON, SK

CUSTOMER: PROJECT:
DEVON CANADA PLANT SIDE
CALGARY, AB ROCKY MOUNTAIN HOUSE, AB

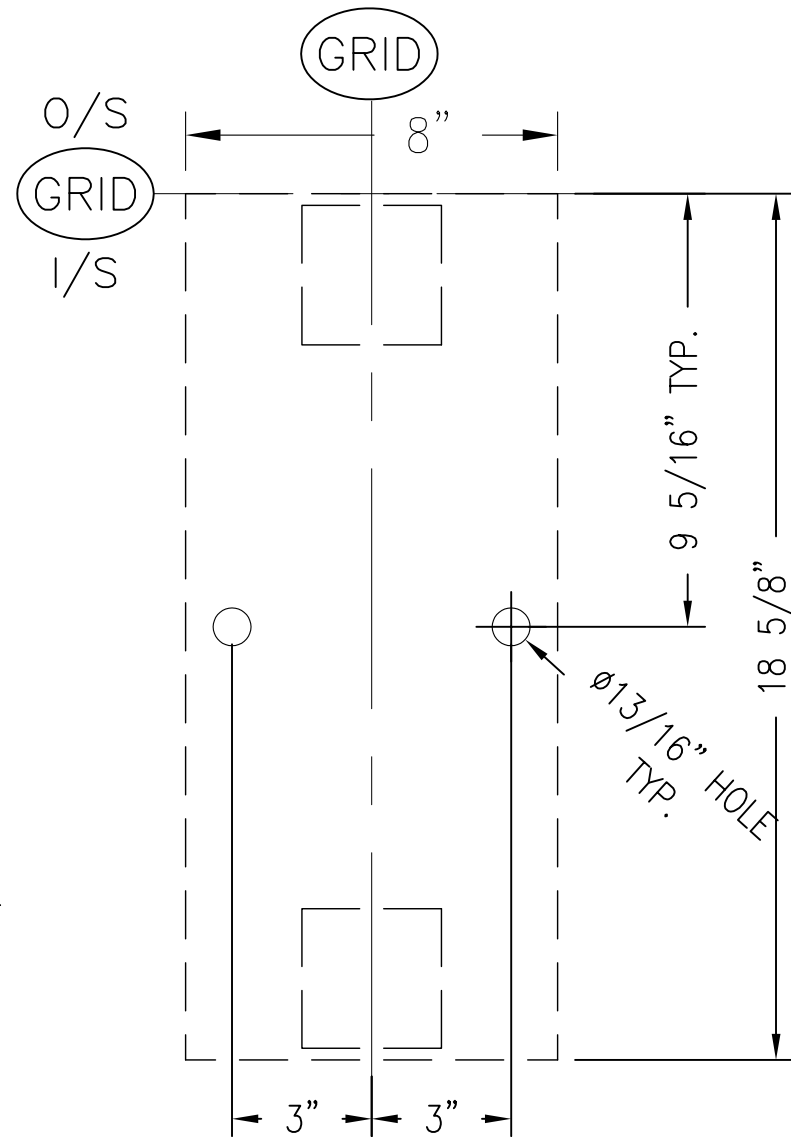
DETAILER:	DWG REV	REVISED BY: DESCRIPTION	DATE
CA	1	RELEASED	20 JUN 13
CHECKER:			

This drawing and the proprietary design is property of Norseman Structures any reproduction in whole or in part without the expressed written consent of Norseman Structures is prohibited.
This drawing is not to scale unless otherwise noted.

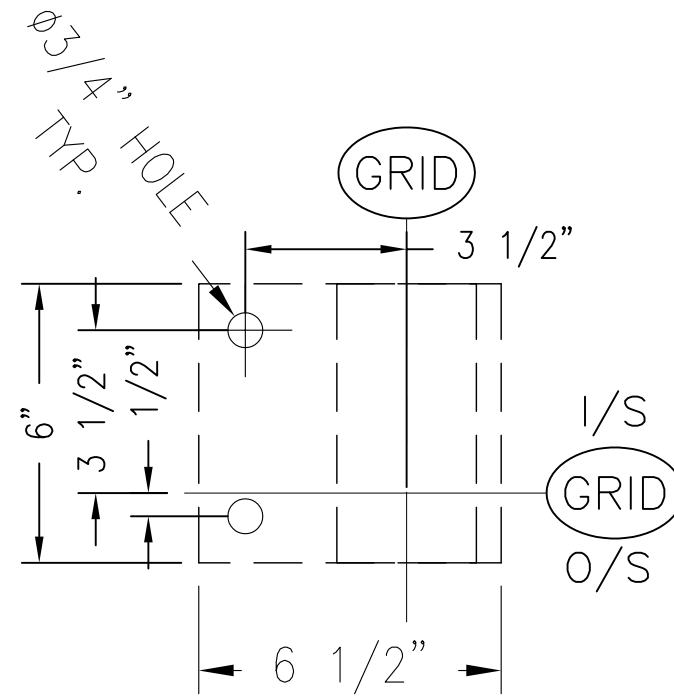
DRAWING TITLE:			
ENDWALL 2			
PROJECT ID:	ORDER ID:	DRAWING:	REV:
.	S05262	EW-2	1



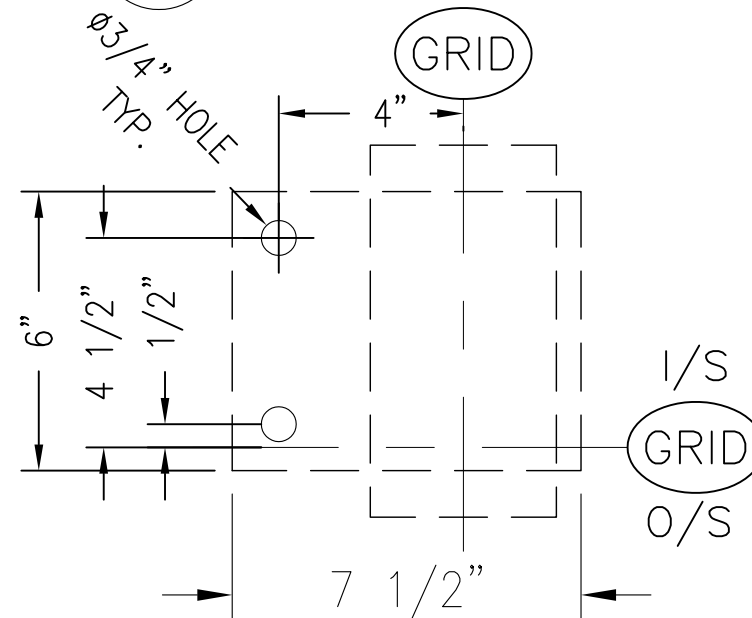
A
BD-1
**END LEG TRUSS
BASEPLATE DETAIL**



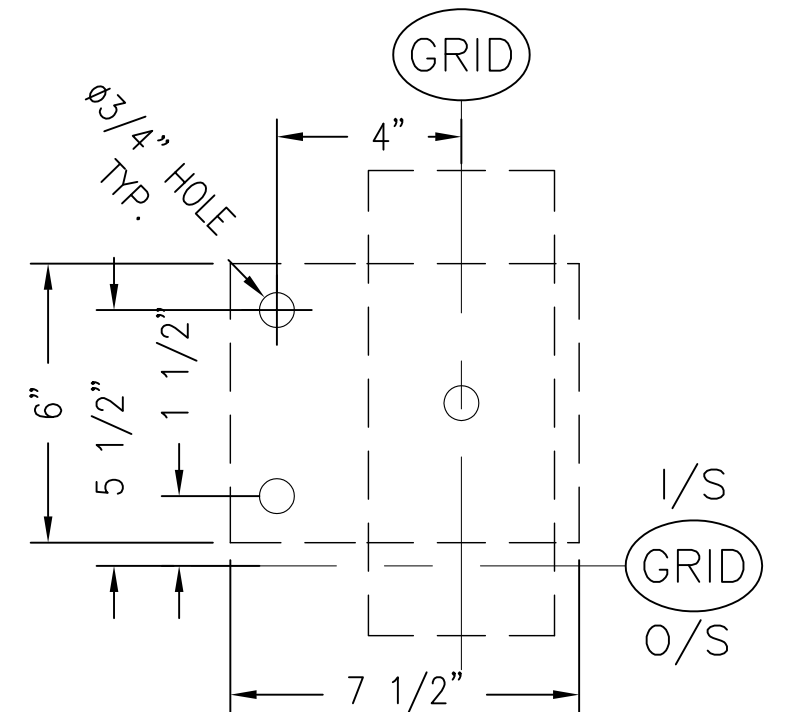
B
BD-1
**COMMON LEG TRUSS
BASEPLATE DETAIL**



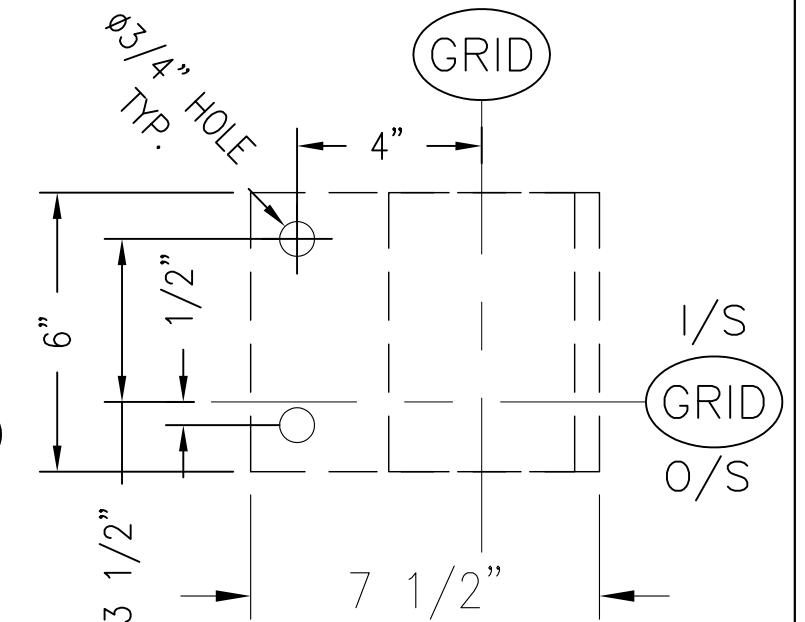
C
BD-1
**3x6 HSS ENDWALL
BASEPLATE DETAIL**



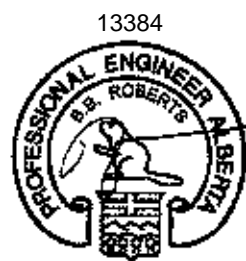
E
BD-1
**4x8 HSS ENDWALL
BASEPLATE DETAIL**



D
BD-1
**4x10 HSS ENDWALL
BASEPLATE DETAIL**



F
BD-1
**4x6 HSS ENDWALL
BASEPLATE DETAIL**



June 27/13



**NORSEMAN
STRUCTURES**

3815 Wanuskewin Road
Saskatoon, SK, Canada S7P 1A4
Ph: 306.385.2888 Fax: 306.385.2717
www.norsemanstructures.com

DEALER
NORSEMAN STRUCTURES
SASKATOON, SK

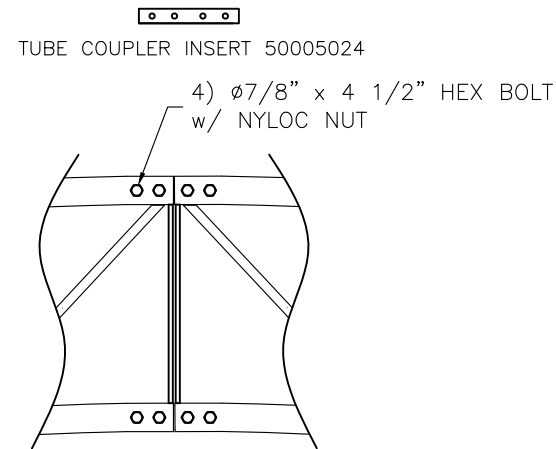
CUSTOMER:
DEVON CANADA
CALGARY, AB

PROJECT:
PLANT SIDE
ROCKY MOUNTAIN HOUSE, AB

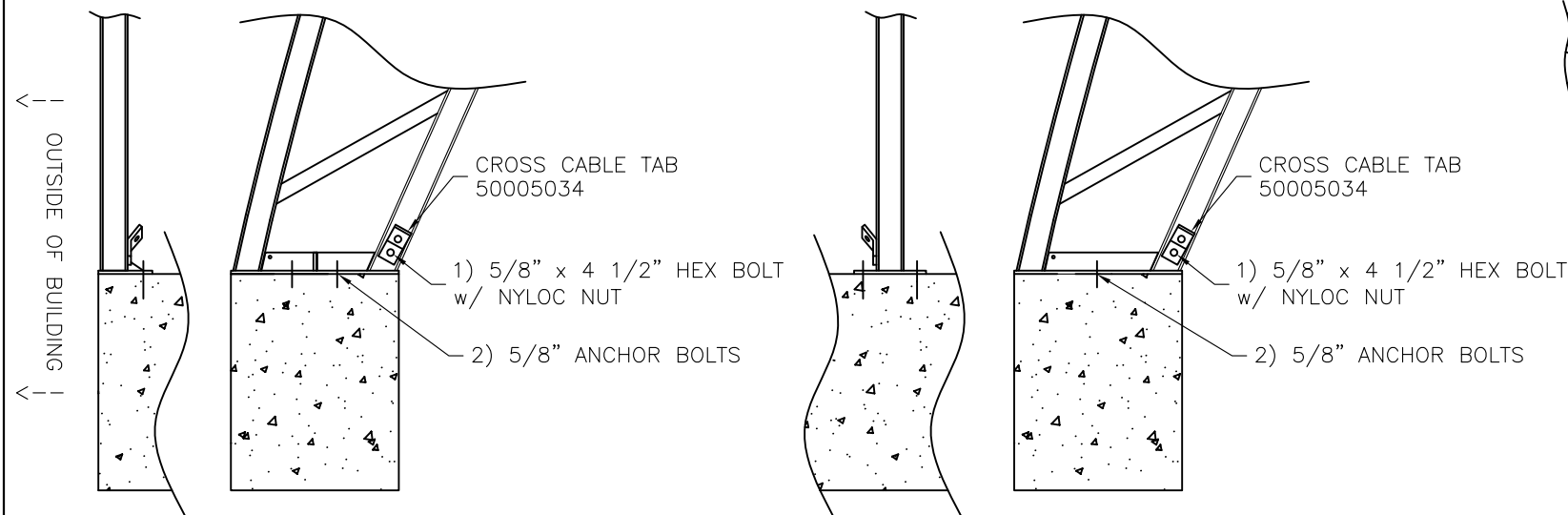
DETAILER:	DWG REV	REVISED BY:	DESCRIPTION	DATE
CA	1	RELEASED		20 JUN 13
CHECKER:				

This drawing and the proprietary design is property of Norseman Structures any reproduction in whole or in part without the expressed written consent of Norseman Structures is prohibited.
This drawing is not to scale unless otherwise noted.

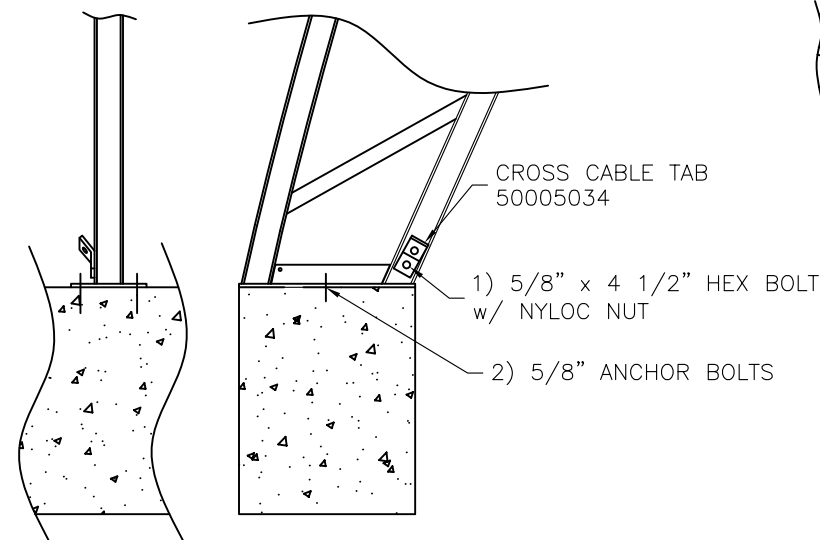
DRAWING TITLE:			
BASE PLATE DETAILS			
PROJECT ID:	ORDER ID:	DRAWING:	REV:
-	S05262	BD-1	1



A
SD-1
TRUSS COUPLER CONNECTION DETAIL

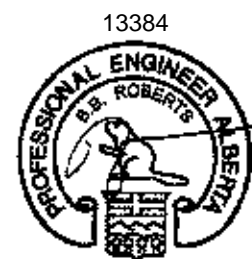


B
SD-1
END LEG CONNECTIONS

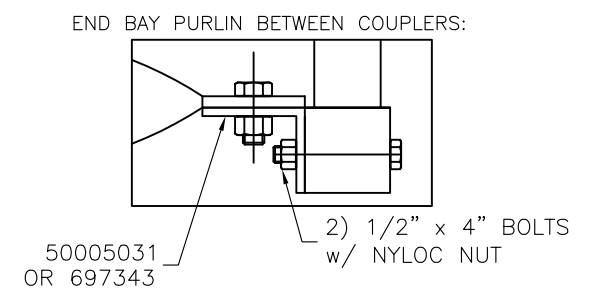
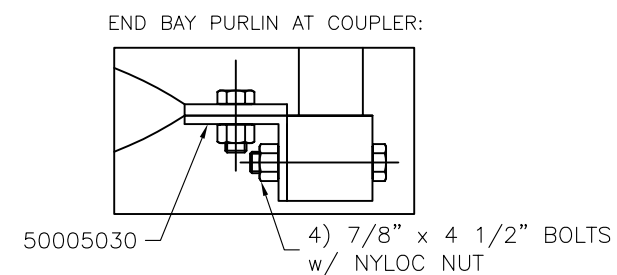
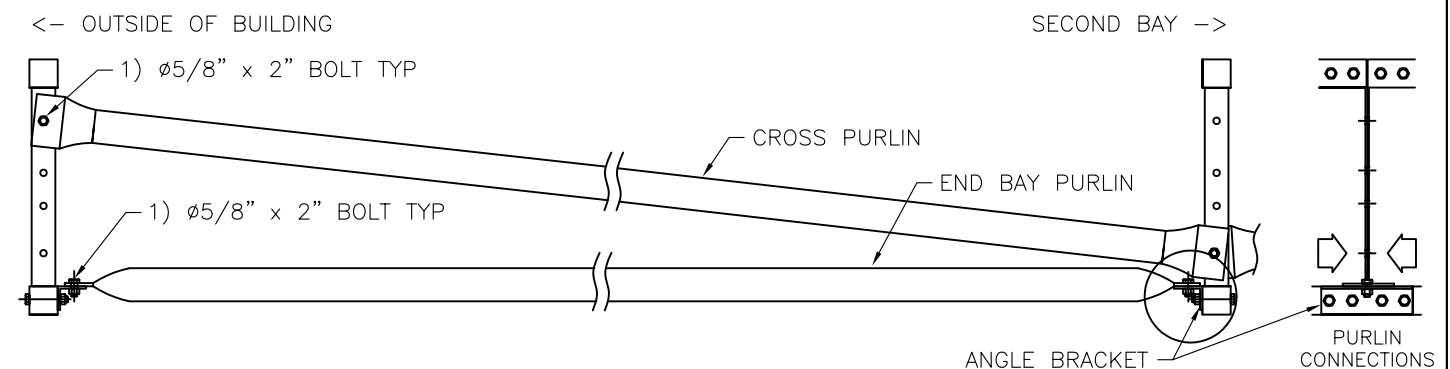
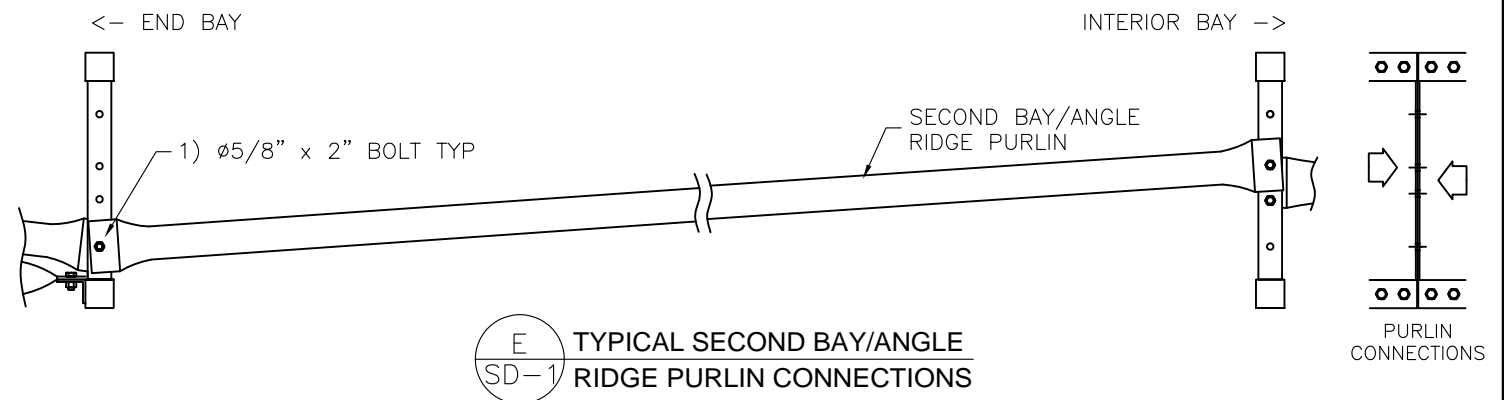
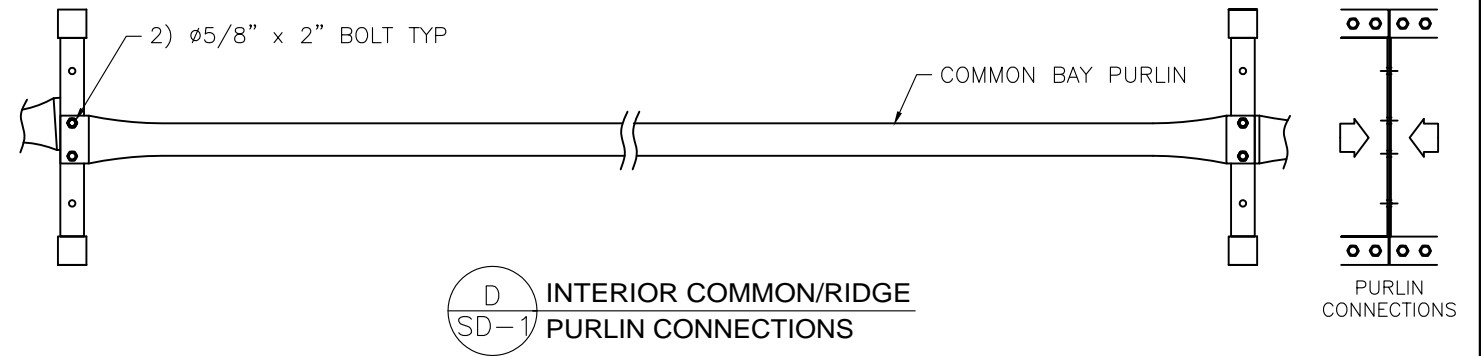


C
SD-1
COMMON LEG CONNECTIONS

Part no	Material
50005024	2 1/2" X 2 1/2"x1/8" SQ. TUBE
50005030	3" x 3" x 1/4" ANGLE
50005031	3" x 3" x 1/4" ANGLE
32200055	2" x 3/8" FB



June 27/13



F
SD-1
PURLIN CONNECTIONS IN END BAY



3815 Wanuskewin Road
Saskatoon, SK, Canada S7P 1A4
Ph: 306.385.2888 Fax: 306.385.2717
www.norsemanstructures.com

DEALER
NORSEMAN STRUCTURES
SASKATOON, SK

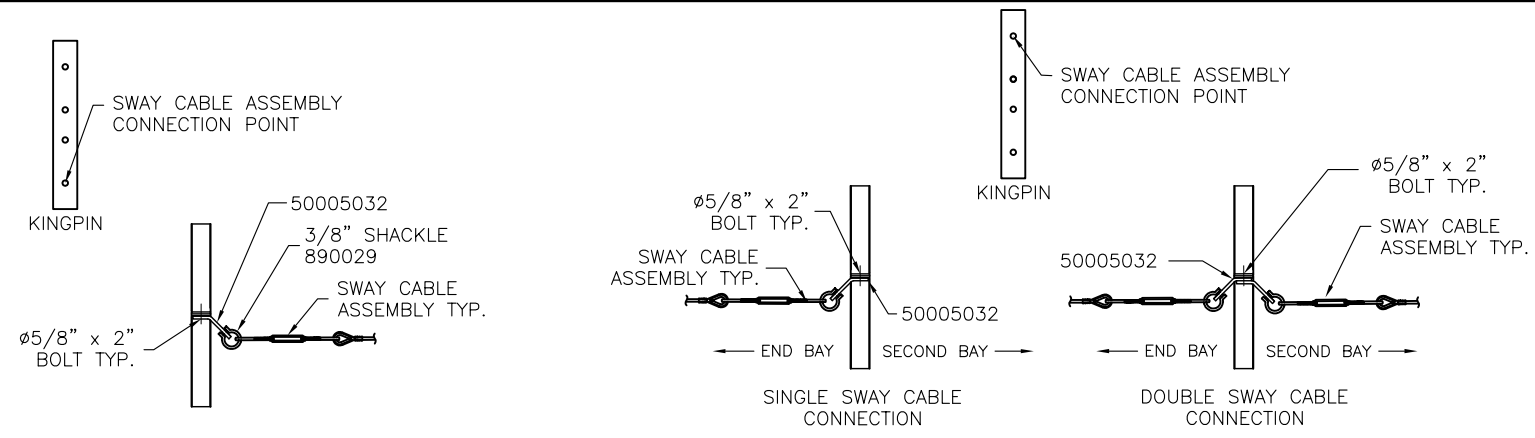
CUSTOMER: PROJECT:
DEVON CANADA PLANT SIDE
CALGARY, AB ROCKY MOUNTAIN HOUSE, AB

DETAILER:	DWG REV	REVISED BY: DESCRIPTION	DATE
CA	1	RELEASED	20 JUN 13
CHECKER:			

This drawing and the proprietary design is property of Norseman Structures any reproduction in whole or in part without the expressed written consent of Norseman Structures is prohibited.

This drawing is not to scale unless otherwise noted.

DRAWING TITLE:			
STANDARD DETAILS 1			
PROJECT ID:	ORDER ID:	DRAWING:	REV:
-	S05262	SD-1	1

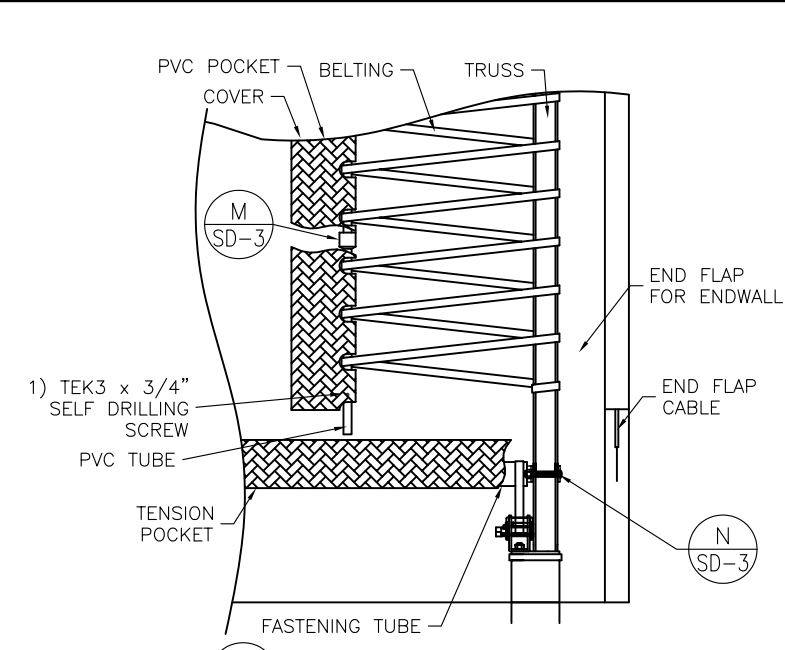


*SHACKLE CONNECTS TO LONG END OF 50005032

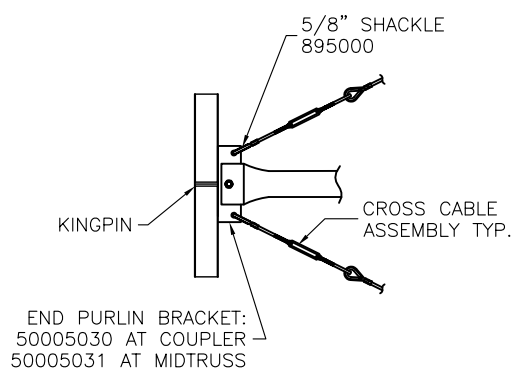
H
SD-2
**SWAY CABLE CONNECTION
AT END/THIRD TRUSS**

*SHACKLE CONNECTS TO LONG END OF 50005032

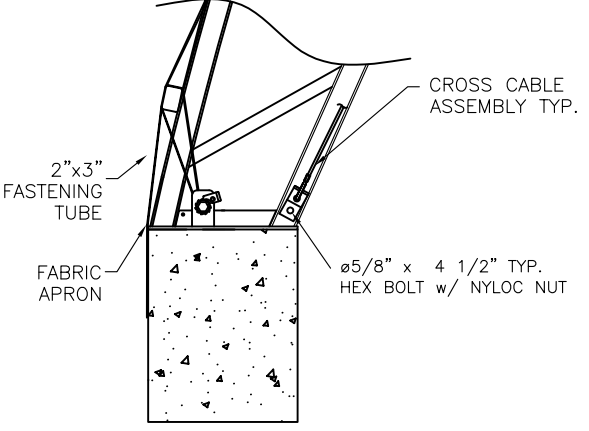
I
SD-2
**SWAY CABLE CONNECTION
AT SECOND TRUSS**



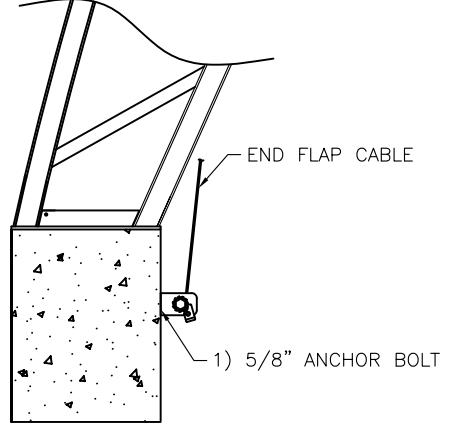
L
SD-2
**PVC TUBE CONNECTION
TO BUILDING**



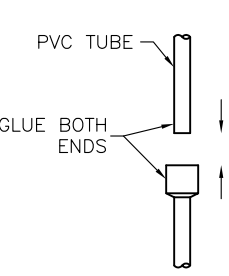
J
SD-2
**CROSS CABLE AT COUPLER
& MIDTRUSS CONNECTION**



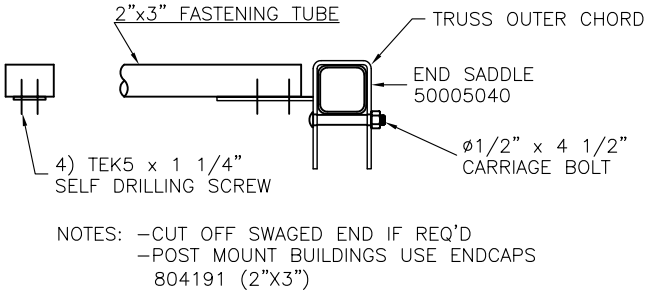
K
SD-2
**BOOT CROSS CABLE &
TENSION CONNECTION**



K
SD-2
**END FLAP CABLE
CONNECTION**

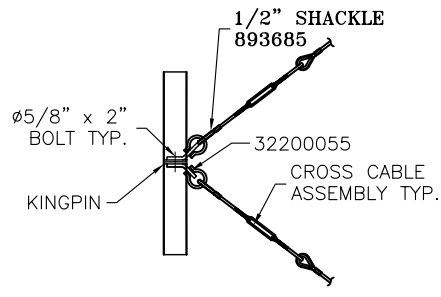


M
SD-2
**PVC TUBE
CONNECTION**

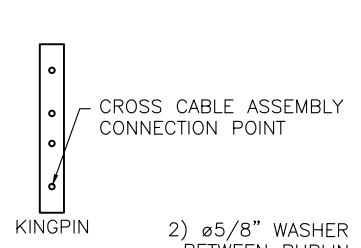


N
SD-2
**FASTENING TUBE
END SADDLE BRACKET**

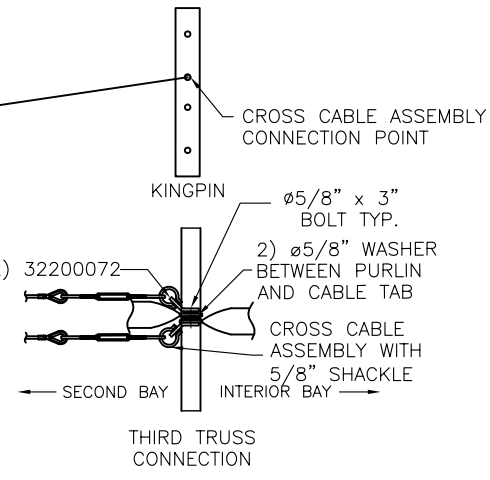
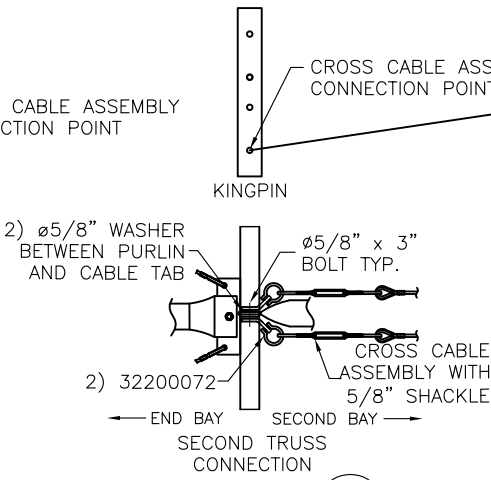
NOTES: -CUT OFF SWAGED END IF REQ'D
-POST MOUNT BUILDINGS USE ENDCAPS 804191 (2"x3")



O
SD-2
**CROSS CABLE CONNECTION
INTERIOR BRACED BAY**



P
SD-2
**CROSS CABLE CONNECTION
IN SECOND BAY**



Part no	Material
50005032	3/8" X 2" FB
50005040	1/4" x 2" FB
50005030	3" x 3" x 1/4" ANGLE
50005031	3" x 3" x 1/4" ANGLE
32200055	3/8" x 2" FB



3815 Wanuskewin Road
Saskatoon, SK, Canada S7P 1A4
Ph: 306.385.2888 Fax: 306.385.2717
www.norsemanstructures.com

DEALER NORSEMAN STRUCTURES SASKATOON, SK	CUSTOMER: DEVON CANADA CALGARY, AB	PROJECT: PLANT SIDE ROCKY MOUNTAIN HOUSE, AB
DRAWING TITLE: STANDARD DETAILS 2		
PROJECT ID: -	ORDER ID: S05262	DRAWING: SD-2
REV: 1		

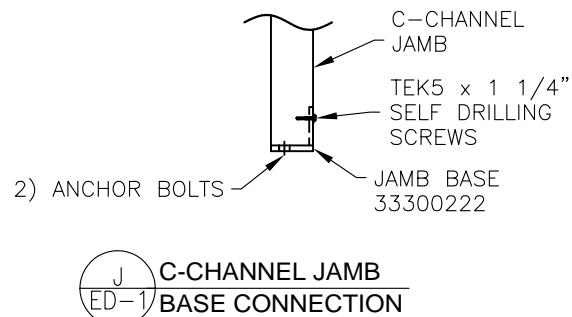
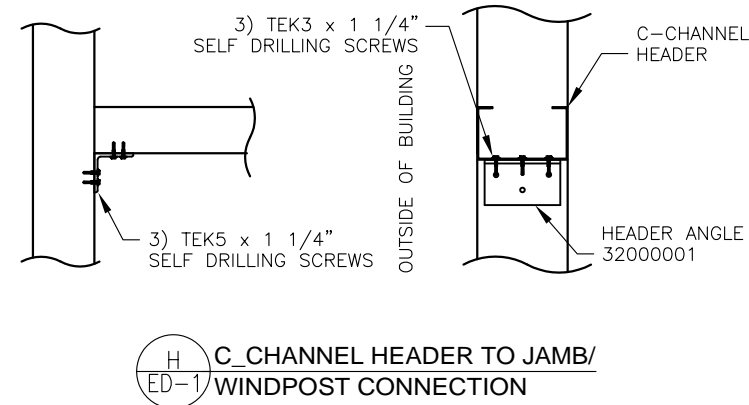
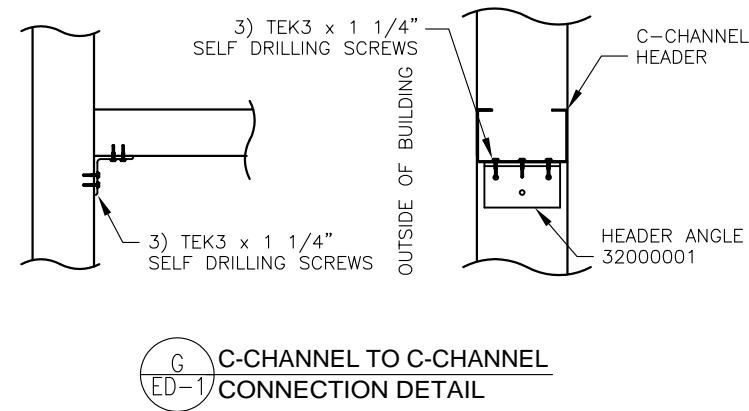
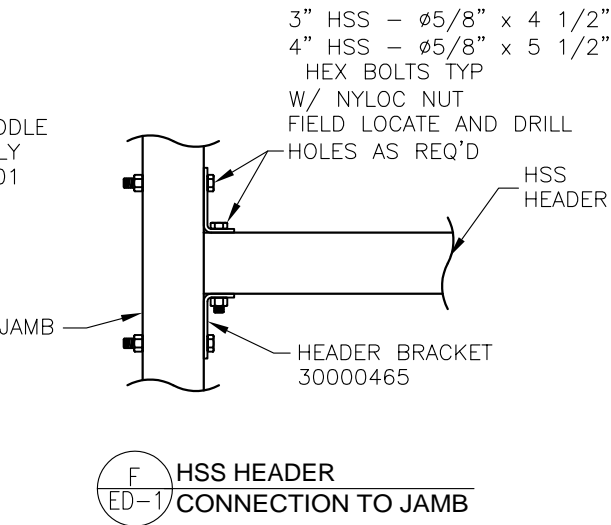
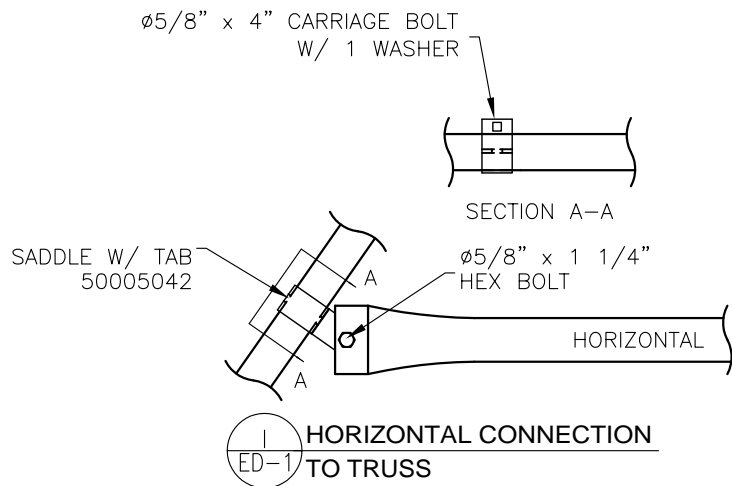
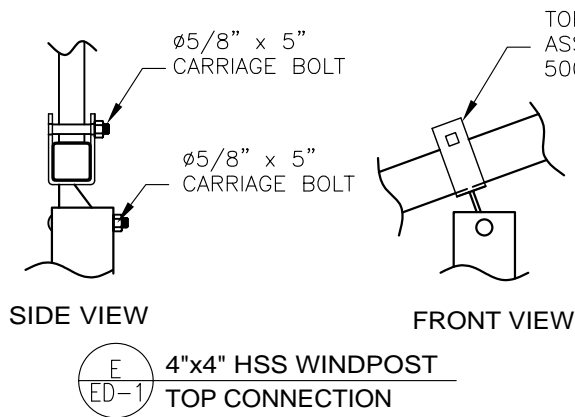
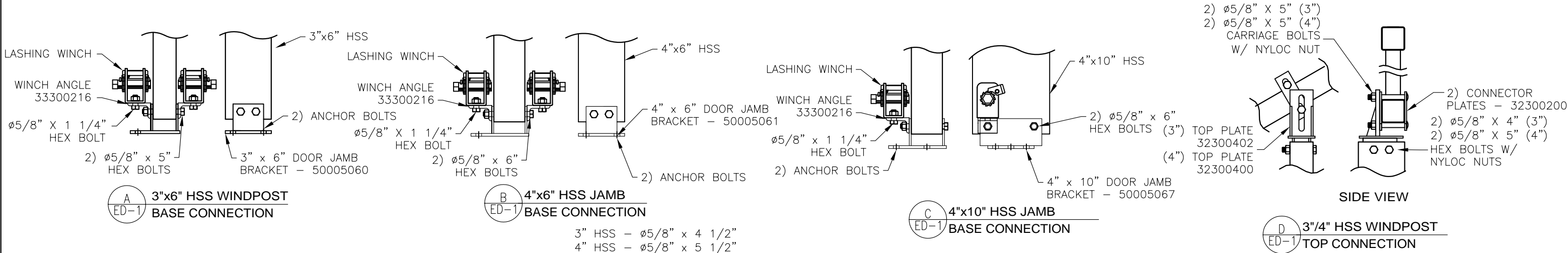
DETAILER: CA
CHECKER:

DWG REV: 1
RELEASED

REVISED BY: DESCRIPTION
DATE: 20 JUN 13


This drawing and the proprietary design is property of Norseman Structures any reproduction in whole or in part without the expressed written consent of Norseman Structures is prohibited.

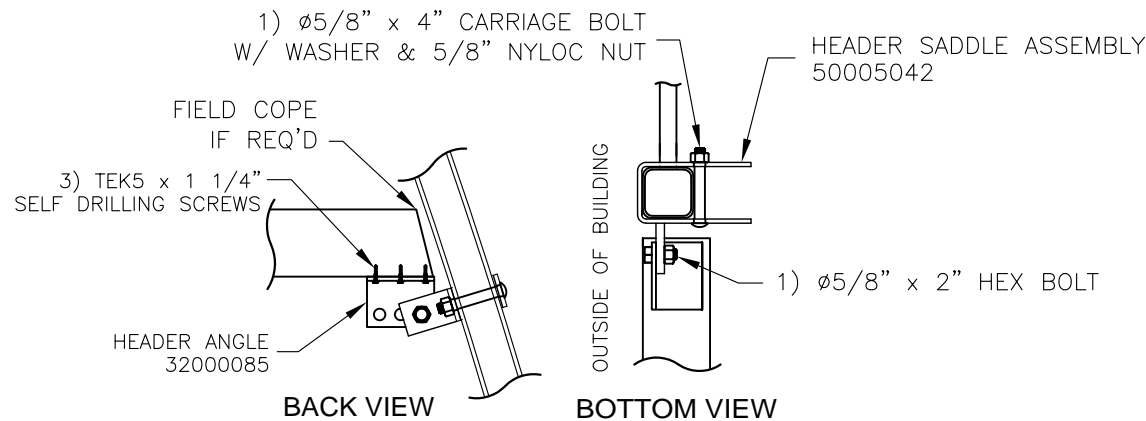
This drawing is not to scale unless otherwise noted.



Part no	Material	Part no	Material
50005060	1/2" X 6" FB // 1/4" X 3 1/2" FB	32300402	1/4" PLATE // 1/2" x 3" PLATE
50005063	1/2" X 6" FB // 1/4" X 3 1/2" FB	32300400	1/4" PLATE // 1/2" x 3" PLATE
50005061	1/2" X 6" FB // 1/4" X 3 1/2" FB	32000001	L 3" x 3" x 1/4"
50006001	3/4" SCHD 40 // 1/4" x 2" FB	50005042	2" x 1/4" FB // 2" 1/2" FB
50005064	1/2" x 3" FB // 1/4" x 3 1/2"	30000465	1/4" X 6" FB
32300200	1/4" x 2" FB	33300222	1/4" x 2 1/2" // 3/8" x 4"

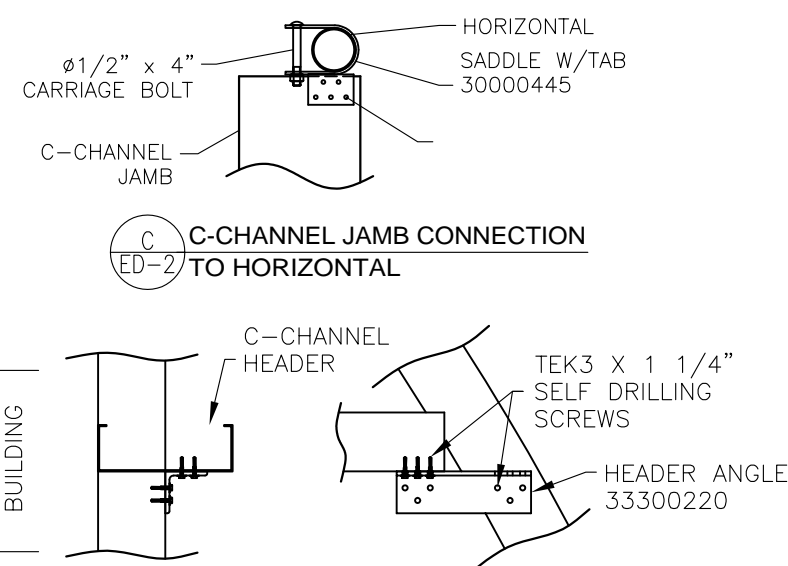


				3815 Wanuskewin Road Saskatoon, SK, Canada S7P 1A4 Ph: 306.385.2888 Fax: 306.385.2717 www.norsemanstructures.com		DEALER NORSEMAN STRUCTURES SASKATOON, SK		CUSTOMER: DEVON CANADA CALGARY, AB		PROJECT: PLANT SIDE ROCKY MOUNTAIN HOUSE, AB		
DETAILER:	DWG REV	REVISED BY: DESCRIPTION			DATE	This drawing and the proprietary design is property of Norseman Structures any reproduction in whole or in part without the expressed written consent of Norseman Structures is prohibited. This drawing is not to scale unless otherwise noted.		DRAWING TITLE:				
CA	1	RELEASED			20 JUN 13			ENDWALL DETAILS				
CHECKER:								PROJECT ID:		ORDER ID:		DRAWING:
								S05262		ED-1		1



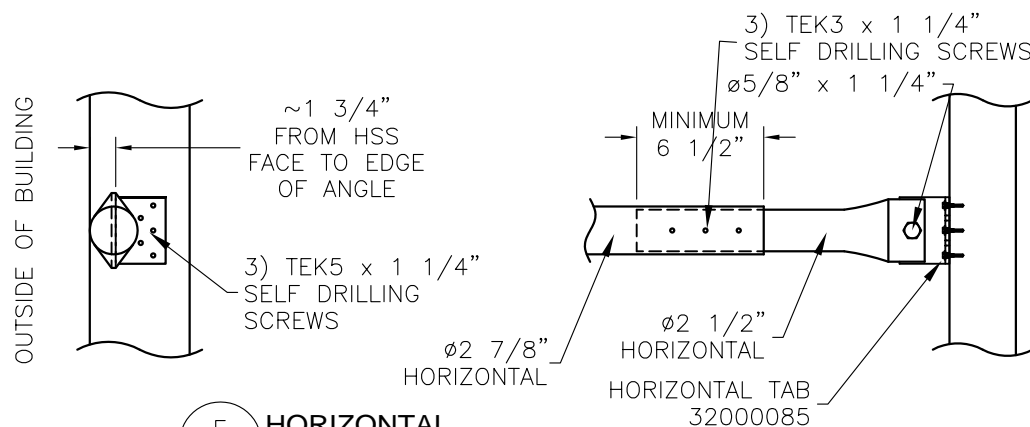
A
ED-2
4x4 HORIZONTAL TO TRUSS CONNECTION

B
ED-2
4x4 HSS HORIZONTAL TO JAMB/ WINDPOST CONNECTION

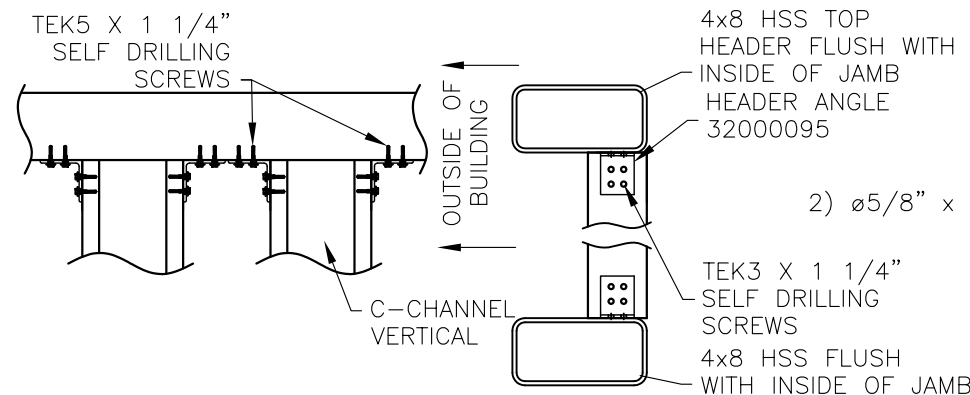


C
ED-2
C-CHANNEL JAMB CONNECTION TO HORIZONTAL

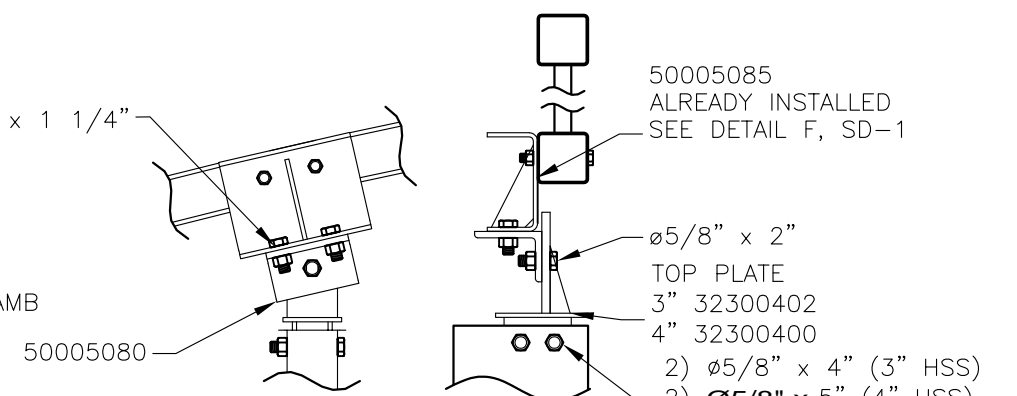
D
ED-2
C-CHANNEL HEADER CONNECTION TO TRUSS



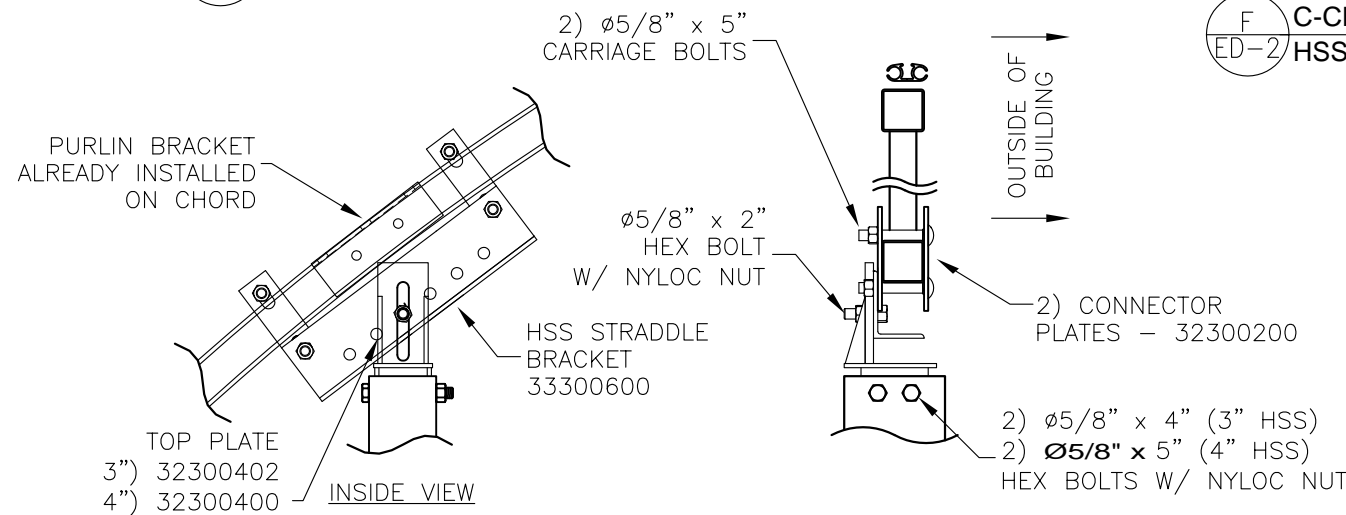
E
ED-2
HORIZONTAL CONNECTIONS



F
ED-2
C-CHANNEL VERTICAL CONNECTION HSS DOOR HEADER SPRING PAD

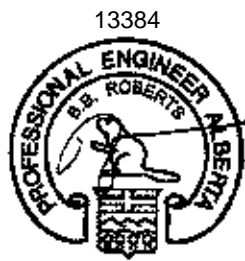


G
ED-2
3/4" HSS WINDPOST/JAMB TOP CONNECTION



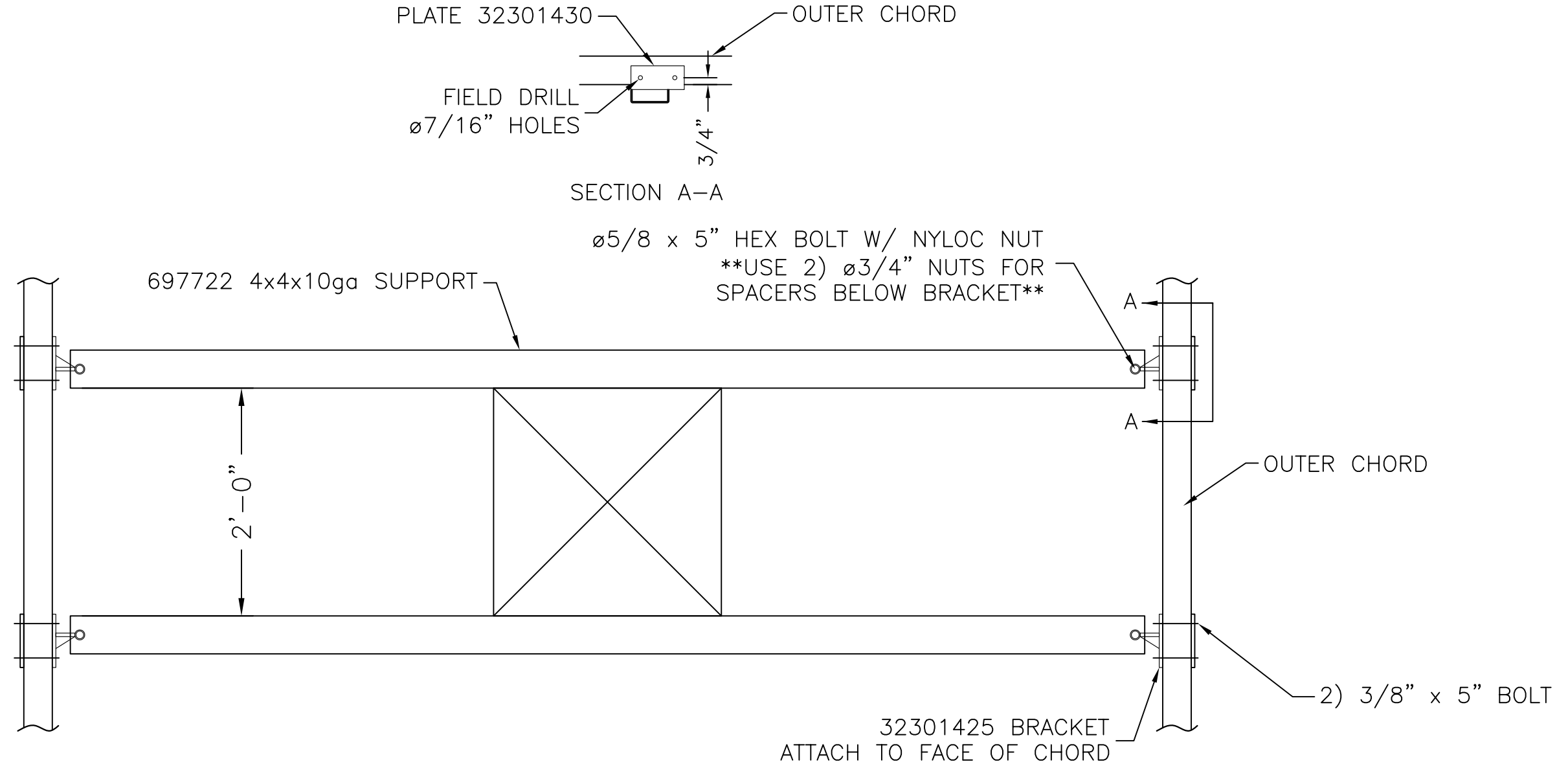
H
ED-2
STRADDLE BRACKET CONNECTION TO TRUSS

Part no	Material
32000085	L 3" X 3" X 1/4"
50005042	1/4" X 2" FB // 1/2" X 2" FB
32000095	L 2 1/2" X 2 1/2" X 3/16"
33300220	L 2 1/2" X 2 1/2" X 1/4"
50005080	L 3" X 4" X 3/8"
32300402/32300400	1/4" PLATE // 1/2" PLATE
33300600	L 3" X 4" X 1/4"
32300200	2" x 1/4" FB
30000445	3/16" x 3" FB // 3/16" x 2" FB



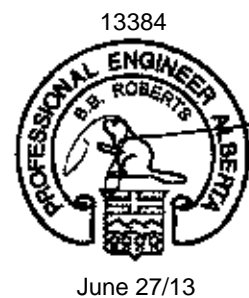
June 27/13


			3815 Wanuskewin Road Saskatoon, SK, Canada S7P 1A4 Ph: 306.385.2888 Fax: 306.385.2717 www.norsemanstructures.com		DEALER NORSEMAN STRUCTURES SASKATOON, SK	CUSTOMER: DEVON CANADA CALGARY, AB	PROJECT: PLANT SIDE ROCKY MOUNTAIN HOUSE, AB
DETAILER: CA	DWG REV 1	REVISED BY: DESCRIPTION RELEASED	DATE 20 JUN 13	This drawing and the proprietary design is property of Norseman Structures any reproduction in whole or in part without the expressed written consent of Norseman Structures is prohibited. This drawing is not to scale unless otherwise noted.			
CHECKER:				DRAWING TITLE: ENDWALL DETAILS 2			
				PROJECT ID: -	ORDER ID: S05262	DRAWING: ED-2	REV: 1

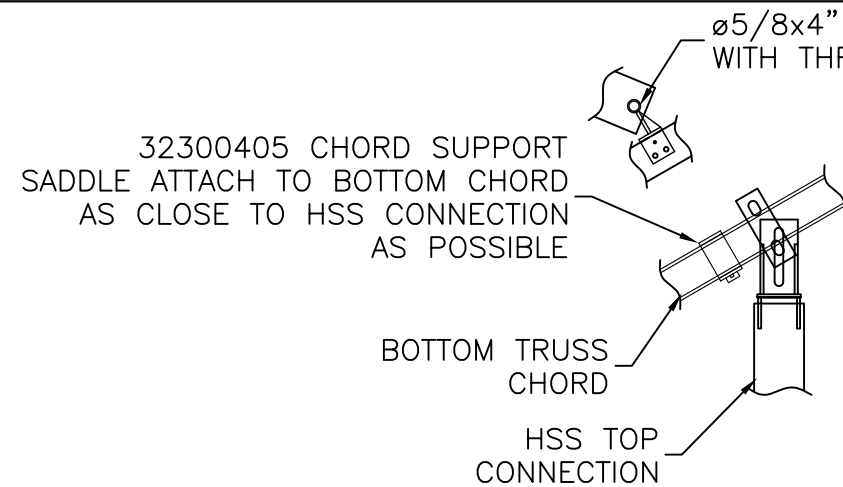


A
RV-1

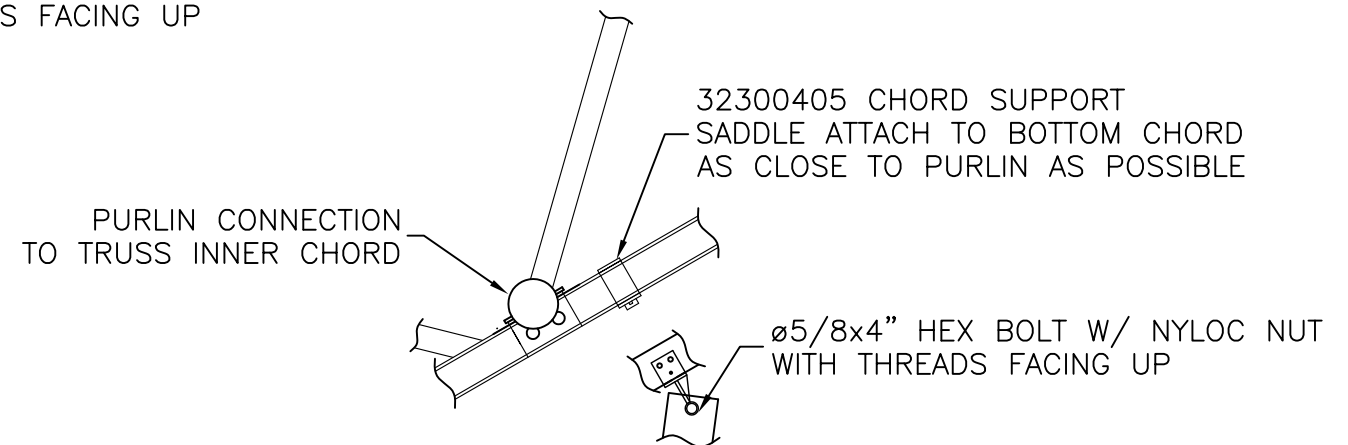
**ROOF VENT SUPPORT
TO TRUSS CONNECTION**



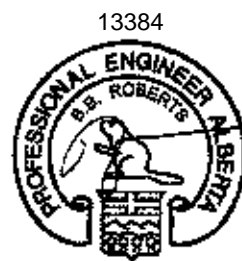
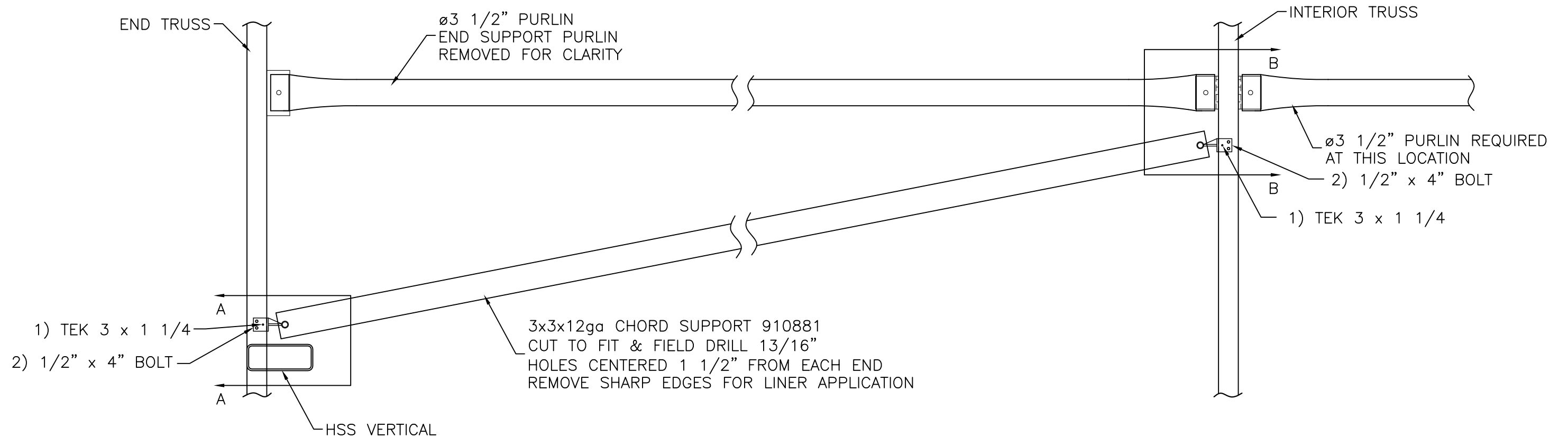
<div>NORSEMAN STRUCTURES</div> <div>3815 Wanuskewin Road Saskatoon, SK, Canada S7P 1A4 Ph: 306.385.2888 Fax: 306.385.2717 www.norsemanstructures.com</div>				DEALER NORSEMAN STRUCTURES SASKATOON, SK		CUSTOMER: DEVON CANADA CALGARY, AB		PROJECT: PLANT SIDE ROCKY MOUNTAIN HOUSE, AB	
DETAILER:	DWG REV	REVISED BY: DESCRIPTION		DATE	This drawing and the proprietary design is property of Norseman Structures any reproduction in whole or in part without the expressed written consent of Norseman Structures is prohibited. This drawing is not to scale unless otherwise noted.	DRAWING TITLE:			
CA	1	RELEASED		20 JUN 13		ROOF VENT SUPPORT DETAILS			
CHECKER:						PROJECT ID:	ORDER ID:	DRAWING:	REV:
					-	S05262	RV-1	1	



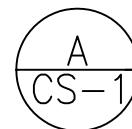
SECTION A-A



SECTION B-B



June 27/13



HSS ENDWALL INNER CHORD SUPPORT CONNECTION UP TO 16' O.C.



3815 Wanuskewin Road
Saskatoon, SK, Canada S7P 1A4
Ph: 306.385.2888 Fax: 306.385.2717
www.norsemanstructures.com

DEALER
NORSEMAN STRUCTURES
SASKATOON, SK

CUSTOMER: PROJECT:
DEVON CANADA PLANT SIDE
CALGARY, AB ROCKY MOUNTAIN HOUSE, AB

DETAILER:	DWG REV	REVISED BY:	DESCRIPTION	DATE
CA	1	RELEASED		20 JUN 13
CHECKER:				

This drawing and the proprietary design is property of Norseman Structures any reproduction in whole or in part without the expressed written consent of Norseman Structures is prohibited.

This drawing is not to scale unless otherwise noted.

DRAWING TITLE:			
CHORD SUPPORT DETAILS			
PROJECT ID:	ORDER ID:	DRAWING:	REV:
-	S05262	CS-1	1