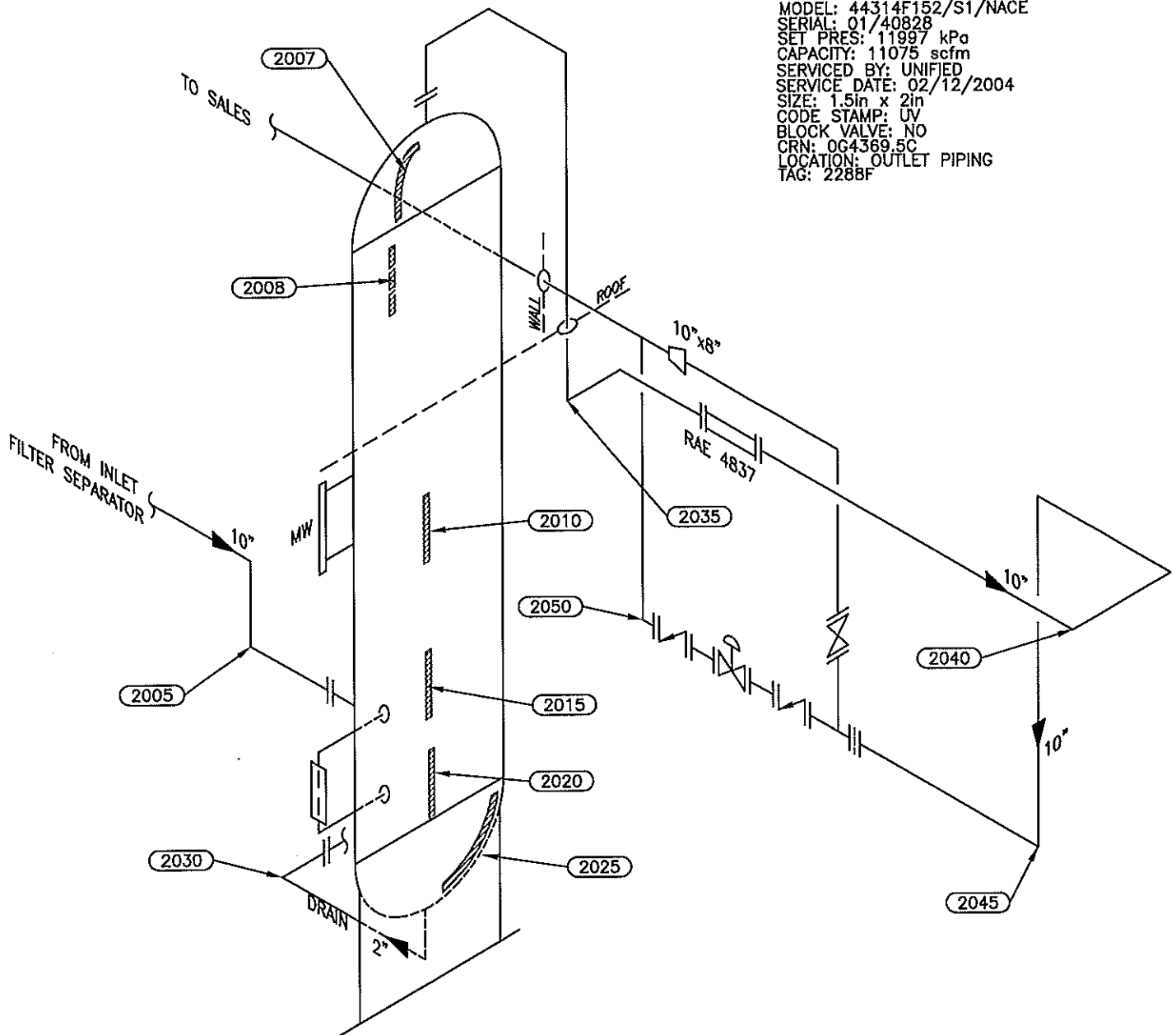


PSV DATA

MFG: ANDERSON GREENWOOD
 MODEL: 44314F152/S1/NACE
 SERIAL: 01/40828
 SET PRES: 11997 kPa
 CAPACITY: 11075 scfm
 SERVICED BY: UNIFIED
 SERVICE DATE: 02/12/2004
 SIZE: 1.5in x 2in
 CODE STAMP: UV
 BLOCK VALVE: NO
 CRN: OG4369.5C
 LOCATION: OUTLET PIPING
 TAG: 2288F



Equip. No. V-3 Prov. Reg. No. Ⓐ 133291 C.R.N. E-8494-1 Serial No. PE 772 Yr. Inst.
 Code/Div. ASME VIII, DIV 1 Size: 43in x 26ft Manufacturer: CESSCO Yr. Bld. 1977
 C. Stamp: U Service: SWEET PWHT: NIL Radiography: NIL Insulated: NO

Design & Materials Data

HEAD:

Top Mat'l. SA 516 70N Top Nom. 50.8mm Top C.A. 3.2mm
 Btm. Mat'l. SA 516 70N Btm. Nom. 50.8mm Btm. C.A. 3.2mm

CHANNEL:

Material: Nominal: C.A.

BOOT

Head Mat'l. Head Nom. Head C.A.
 Shell Mat'l. Shell Nom. Shell C.A.

SHELL

Material: SA 516 70N Nominal: 50.8mm C.A. 3.2mm

MAWP Shell Side: 9791 kPa Ⓢ Temp. 66°C

MAWP Tube Side: Ⓢ Temp.

CLIENT	CANADIAN NATURAL RESOURCES	
FACILITY	LADYFERN	
	LSD a-84-G/94-H-1	
ITEM	GLYCOL CONTACTOR	
BY: LR	DATE: 11/2005	DWG.# 20

CLIENT: CANADIAN NATURAL RESOURCES
EQUIPMENT: GLYCOL CONTACTOR
CRN#: E-8494.1
PROV REG: A 133291
TESTED ON STREAM

FACILITY: LADYFERN
SERVICE: SWEET
LOCATION: a-84-G/94-H-1
RTD JOB #: 10.110181
REFER TO DRAWING: 20

Test Point	THICKNESS DATA				Flag	T-Min	C.A.	Nom.	Short Term	Long Term	Ave. mm/py	Retirement Date
2007												
Description: TOP HEAD												
	2005	9	2011	4								
Min. Thick.	52.7		52.7		47.60		3.2	50.80	0		0	
Average:	53.4		53.4						0		0	
Analysis: 2005/09 MIN SCAN AT KNUCKLE												
2008												
Description: UPPER SHELL												
	2005	9	2011	4								
Min. Thick.	51.2		51.2		47.60		3.2	50.80	0		0	
Average:	51.4		51.4						0		0	
Analysis:												
2010												
Description: MID SHELL												
	2005	9	2011	4								
Min. Thick.	51.7		51.6		47.60		3.2	50.80	.02		.02	
Average:	51.9		51.9						0		0	
Analysis:												
2015												
Description: MID SHELL												
	2005	9	2011	4								
Min. Thick.	52.6		52.6		47.60		3.2	50.80	0		0	
Average:	52.7		52.7						0		0	
Analysis:												
2020												
Description: LOWER SHELL												
	2005	9	2011	4								
Min. Thick.	52.3		52.3		47.60		3.2	50.80	0		0	
Average:	52.4		52.4						0		0	
Analysis:												
2025												
Description: BOTTOM HEAD												
	2005	9	2011	4								
Min. Thick.	55.4		55.4		47.60		3.2	50.80	0		0	
Average:	56.3		56.3						0		0	
Analysis: ISOLATED PIT 4" FROM NOZZLE.												

CLIENT: CANADIAN NATURAL RESOURCES
EQUIPMENT: GLYCOL CONTACTOR
CRN#: E-8494.1
PROV REG: A 133291
TESTED ON STREAM

FACILITY: LADYFERN
SERVICE: SWEET
LOCATION: a-84-G/94-H-1
RTD JOB #: 10.110181
REFER TO DRAWING: 20

Test Point	THICKNESS DATA				Flag	T-Min	C.A.	Nom.	Short Term	Long Term	Ave. mm/py	Retirement Date
2030												
Description: 2" 90° NOZZLE												
	2005	9	2011	4								
Min. Thick.	7.1		7.1		5.50		3.2	8.70	0	0		
Average:	7.3		7.3						0	0		
Analysis:												

FACILITY: LADYFERN
SERVICE: SWEET
LOCATION: a-84-G/94-H-1
RTD JOB #: 10.110181
REFER TO DRAWING: 20

Test Point	THICKNESS DATA						Flag	T-Min	C.A.	Nom.	Short Term	Long Term	Ave. mm/py	Retirement Date
2005														
Description:	10" 90° ELBOW													
	2001	4	2005	9										
Min. Thick.	13.4		13.4				11.11		1.6	12.70	0	0		
Average:	13.7		13.7								0	0		
Analysis:														
2035														
Description:	10" 90° ELBOW													
	2005	9	2011	4										
Min. Thick.	18.1		18.1				16.01		2.3	18.30	0	0		
Average:	18.6		18.5								.02	.02		
Analysis:	2005/09 MIN SCAN MID APEX													
2040														
Description:	10" 90° ELBOW													
	2005	9	2011	4										
Min. Thick.	21.6		21.6				18.73		2.7	21.40	0	0		
Average:	22.2		22.2								0	0		
Analysis:	ERROSION AT MID APEX													
2045														
Description:	10" 90° ELBOW													
	2005	9	2011	4										
Min. Thick.	22		22				18.73		2.7	21.40	0	0		
Average:	22.7		22.7								0	0		
Analysis:	2005/09 MIN SCAN AT TOP OF WELD-O-LET													
2050														
Description:	10" 90° ELBOW													
	2005	9	2011	4										
Min. Thick.	19		18.7				16.01		2.3	18.30	.05	.05		
Average:	19.5		19.3								.04	.04		
Analysis:	2005/09 MIN SCAN AT TOP OF WELD-O-LET													