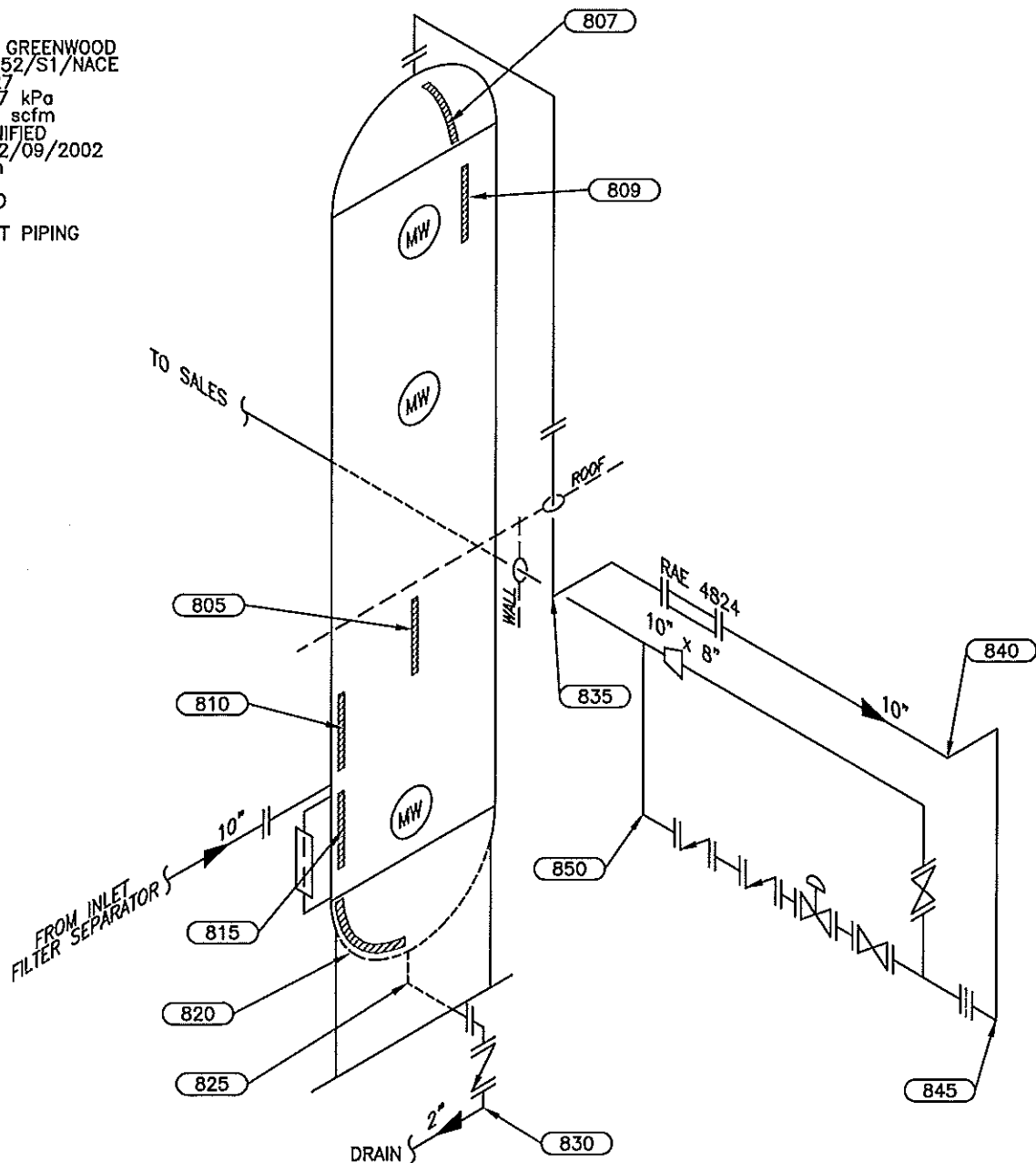


PSV DATA

MFG: ANDERSON GREENWOOD
 MODEL: 84314F152/S1/NACE
 SERIAL: 01/40827
 SET PRES: 11997 kPa
 CAPACITY: 11075 scfm
 SERVICED BY: UNIFIED
 SERVICE DATE: 02/09/2002
 SIZE: 1.5in x 2in
 CODE STAMP: UV
 BLOCK VALVE: NO
 CRN: OG4369.5C
 LOCATION: OUTLET PIPING
 TAG: 2169F



Equip. No. V-510 Prov. Reg. No. RAE 4819 C.R.N. K-2684.1 Serial No. 01168-401 Yr. Inst.
 Code/Div. ASME VIII, DIV 1 Size: 60in x 35ft Manufacturer: PROPAK SYSTEMS Yr. Bld. 2002
 C. Stamp: U Service: SWEET PWHT: HT Radiography: NIL Insulated: NO

Design & Materials Data

HEAD:

Top Mat'l. SA 516 70N Top Nom. 54.0mm Top C.A.
 Btm. Mat'l. SA 516 70N Btm. Nom. 54.0mm Btm. C.A.

CHANNEL:

Material: Nominal: C.A.

BOOT

Head Mat'l. Head Nom. Head C.A.
 Shell Mat'l. Shell Nom. Shell C.A.

SHELL

Material: SA 516 70N Nominal: 57.2mm C.A.

MAWP Shell Side: 11997 kPa @ Temp. 93°C

MAWP Tube Side: @ Temp.

CLIENT	CANADIAN NATURAL RESOURCES		
FACILITY	LADYFERN		
	LSD α-84-G/94-H-1		
ITEM	GLYCOL CONTACTOR		
BY: LR	DATE: 11/2005	DWG.# 8	

CLIENT: CANADIAN NATURAL RESOURCES
EQUIPMENT: GLYCOL CONTACTOR
CRN#: K-2684.1
PROV REG: RAE 4819
TESTED ON STREAM

TESTED ON STREAM

Test Point	THICKNESS DATA						Flag	T-Min	C.A.	Nom.	Short Term	Long Term	Ave. mm/py	Retirement Date
805														
Description:	MID SHELL													
	2005	9	2011	4										
Min. Thick.	58.5		58.5				57.20			57.20	0		0	
Average:	58.7		58.7								0		0	
Analysis:														
807														
Description:	TOP HEAD													
	2005	9	2011	4										
Min. Thick.	57		57				54.00			54.00	0		0	
Average:	57.4		57.4								0		0	
Analysis:	2005/09 MIN SCAN AT NOZZLE.													
809														
Description:	UPPER SHELL													
	2005	9	2011	4										
Min. Thick.	58.8		58.8				57.20			57.20	0		0	
Average:	58.9		58.9								0		0	
Analysis:														
810														
Description:	LOWER SHELL													
	2005	9	2011	4										
Min. Thick.	58.5		58.5				57.20			57.20	0		0	
Average:	58.7		58.7								0		0	
Analysis:														
815														
Description:	LOWER SHELL													
	2005	9	2011	4										
Min. Thick.	58.5		58.5				57.20			57.20	0		0	
Average:	58.7		58.7								0		0	
Analysis:														
820														
Description:	BOTTOM HEAD													
	2005	9	2011	4										
Min. Thick.	56.9		56.9				54.00			54.00	0		0	
Average:	57.4		57.4								0		0	
Analysis:	2005/09 MIN SCAN AT 3" FROM NOZZLE.													

CLIENT: CANADIAN NATURAL RESOURCES
EQUIPMENT: GLYCOL CONTACTOR
CRN#: K-2684.1
PROV REG: RAE 4819
TESTED ON STREAM

TESTED ON STREAM

Test Point	THICKNESS DATA				Flag	T-Min	C.A.	Nom.	Short Term	Long Term	Ave. mm/py	Retirement Date
825												
Description:	2" 90° NOZZLE											
	2005	9	2011	4								
Min. Thick.	8.6		8.6		8.70	3.4		8.70	0	0		
Average:	8.8		8.8						0	0	2167	

FACILITY: LADYFERN
SERVICE: SWEET
LOCATION: a-84-G/94-H-1
RTD JOB #: 10.110181
REFER TO DRAWING: 8

Test Point	THICKNESS DATA						Flag	T-Min	C.A.	Nom.	Short Term	Long Term	Ave. mm/py	Retirement Date
830														
Description:	2" 90° ELBOW													
	2005	9	2011	4										
Min. Thick.	7.3		7.3			7.61	3.4	1.1	8.70	0	0			
Average:	7.6		7.6							0	0			
Analysis:	2011/04 RETIREMENT DATE 2089.													
835														
Description:	10" 90° ELBOW													
	2005	9	2011	4										
Min. Thick.	18.4		18.4			16.01		2.3	18.30	0	0			
Average:	18.7		18.7							0	0			
Analysis:														
840														
Description:	12" 90° ELBOW													
	2005	9	2011	4										
Min. Thick.	21		21			18.73		2.7	21.40	0	0			
Average:	22.7		22.7							0	0			
Analysis:	ERROSION AT MID ELBOW													
845														
Description:	12" 90° ELBOW													
	2005	9	2011	4										
Min. Thick.	24.5		24.2			18.73		2.7	21.40	.05	.05			
Average:	25		25							0	0			
Analysis:	2005/09 MIN SCAN AT TOP OF WELD-O-LET.													
850														
Description:	10" 90° ELBOW													
	2005	9	2011	4										
Min. Thick.	19.7		19.7			16.01		2.3	18.30	0	0			
Average:	20.1		20.1							0	0			
Analysis:	2005/09 MIN SCAN AT TOP OF WELD-O-LET.													