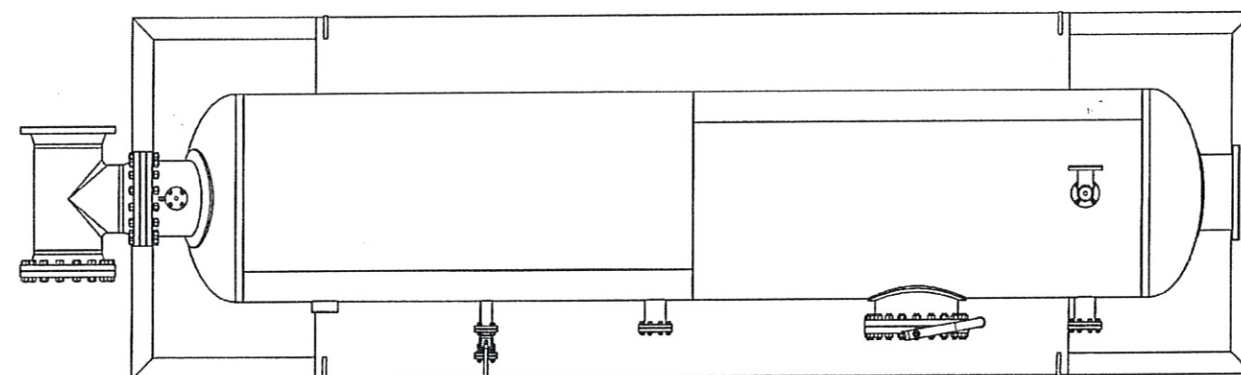


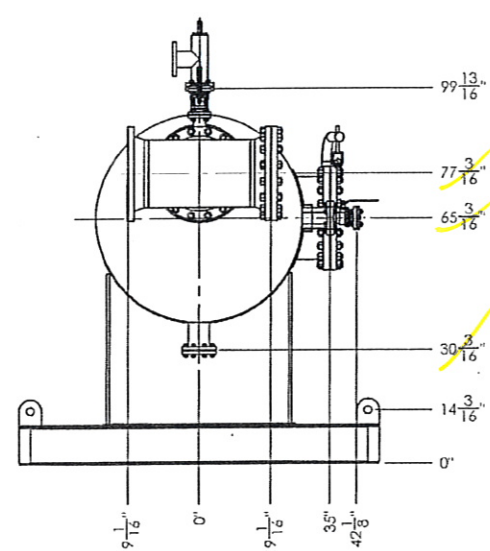
COATING SPECIFICATIONS  
 EXTERNAL:  
 SANDBLAST SSPC-SP6  
 BASE 1 COAT PRIMER  
 FINISH PAINT EPOXY INTERNATIONAL 228  
 FINISH PAINT UN-INSULATED SURFACES ACRYLIC POLYURETHANE INTERNATIONAL 990 (UNINSULATED SURFACES ONLY)

INSULATION  
 INSULATE EXTERIOR OF VESSEL WITH 2" THICK MINERAL WOOL  
 ALUMINUM CLADDING JACKETING

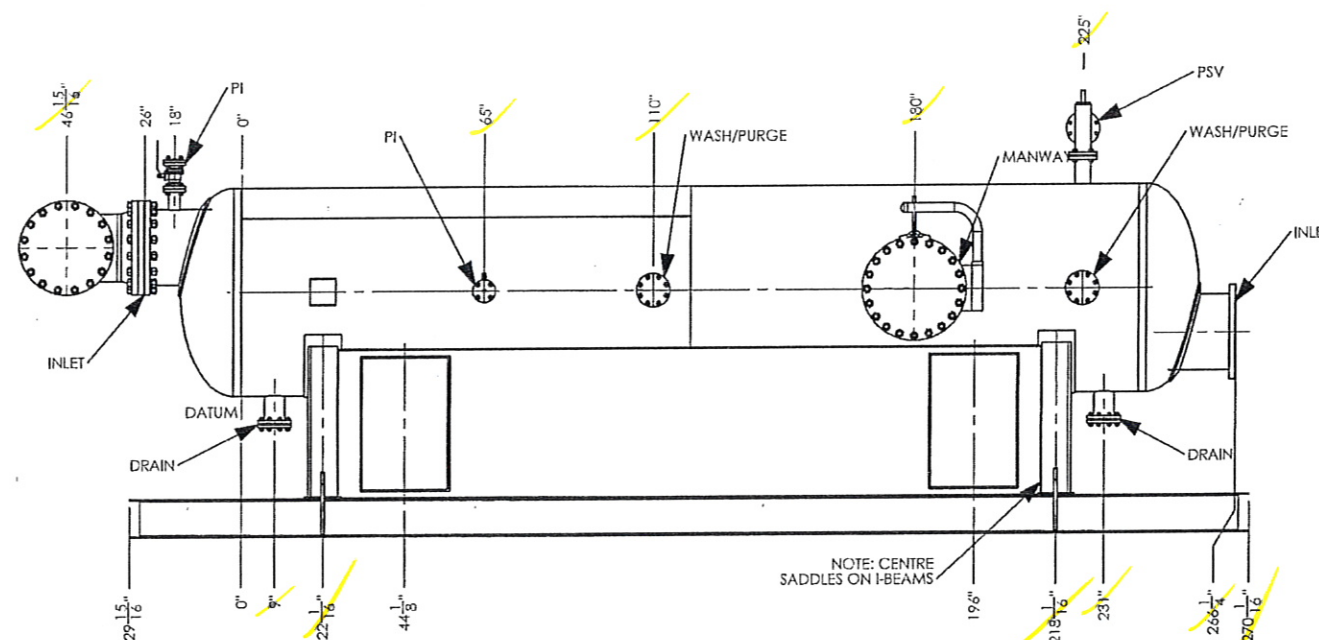
NOTES:  
 ESTIMATED WEIGHT: 16,000 LBS



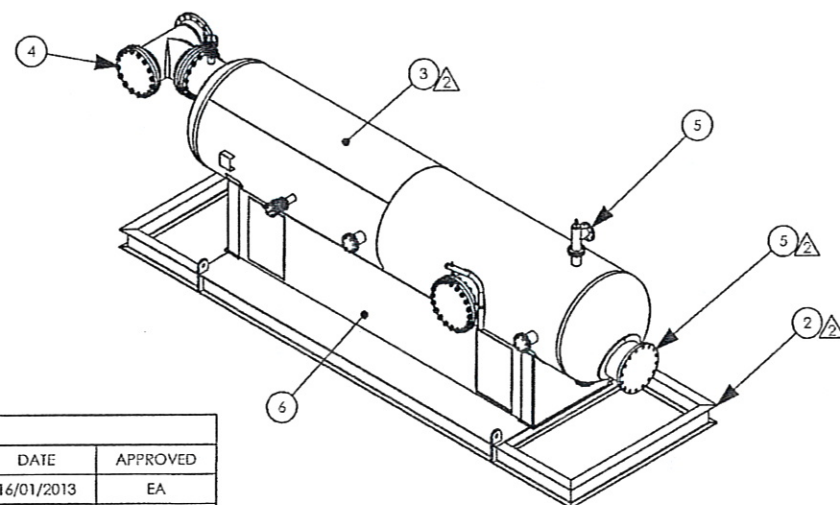
PLAN



FRONT VIEW



ELEVATION



ITEM NO.	QTY.	PART NUMBER	DESCRIPTION	MATERIAL
1	1	1002-0029-101	SCREEN ASSEMBLY	
2	1	2001-0062 REV2	INLET SAND SEPARATOR SKID	
3	1	5300-21 REV3	VESSEL	
4	1	7210-38	OUTLET PIPING	
5	1	7600-39 REV2	MISC BLINDS	
6	1	8503-154 REV1	PANEL BUILDING	URETHANE

ISSUED FOR CONSTRUCTION

PURCH SHOP QC STICK

Signature: *[Signature]* Date: FEB 11 2013  
 6J131270

EQUINOX ENGINEERING  
 DOCUMENT CONTROL

PO #: 201-09-00-0010

SEQ #: 0001

SUB #: 0003

DATE: 2013-02-21

☐ V1 - Correct & Resubmit  
 Manufacturing may NOT proceed

☐ V2 - Correct & Resubmit  
 Manufacturing MAY proceed subject to incorporated changes

☐ V3 - Review Not Required  
 Accepted for information purposes only

☐ V4 - Submit Final Documentation

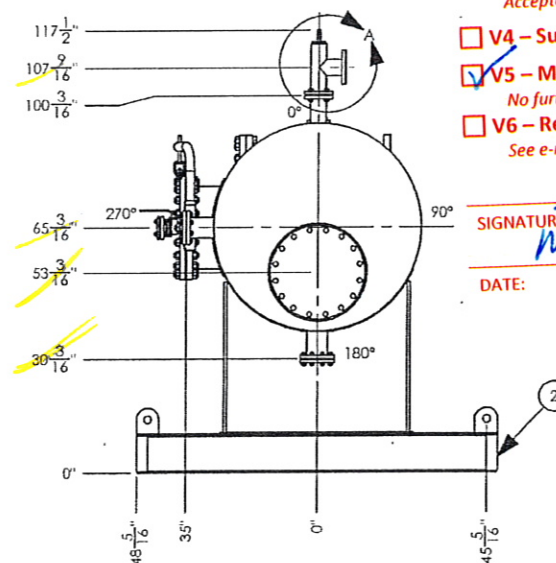
☒ V5 - Manufacturing May Proceed  
 No further submissions are required

☐ V6 - Rejected  
 See e-mail for comments

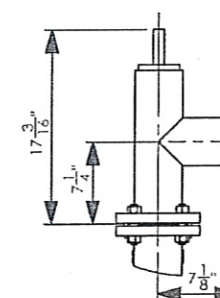
SIGNATURE:

DATE:

*[Signature]*  
 March 5, 2013



BACK VIEW



DETAIL A  
 PSV DIMENSIONS

**DYNACORP**  
 FABRICATORS INC  
 8600 92nd Street  
 Grande Prairie, AB  
 T6V 7S3  
 5152 74th Ave SE  
 Calgary, AB  
 T2C 3C9  
 Phone: (780) 538-0037  
 www.dynacorp.ca  
 Phone: (403) 720-9811

NAME	DATE
DRAWN BY: EA	06/01/2013
CHECKED BY: [Blank]	
CALC. REV: -	-
DATE: -	-

INLET SAND FILTER			
UMBACH COMPRESSOR STATION UPGRADE			
PROJECT NUMBER: 201-09-00			
JOB# 6J131270			
CUBIT	CNRL C/O EQUINOX ENGINEERING		CRI#
SCALE	DWG. NO.	1002-0029 REV2	DWG#
			SHEET
			1 OF 2

REVISION TABLE			
REV.	DESCRIPTION	DATE	APPROVED
1	GENERAL CHANGES, ADDED DIMENSIONAL INFORMATION	16/01/2013	EA
2	ADDED FLANGE COVERS FOR INLET, OUTLET, & PSV; ADDED SUPPORTS FOR HEATERS, MOVED NOZZLES TO SAME SIDE AS MANWAY & ADDED DESIGN NOTES AS PER CNRL SPEC	31/01/2013	EA