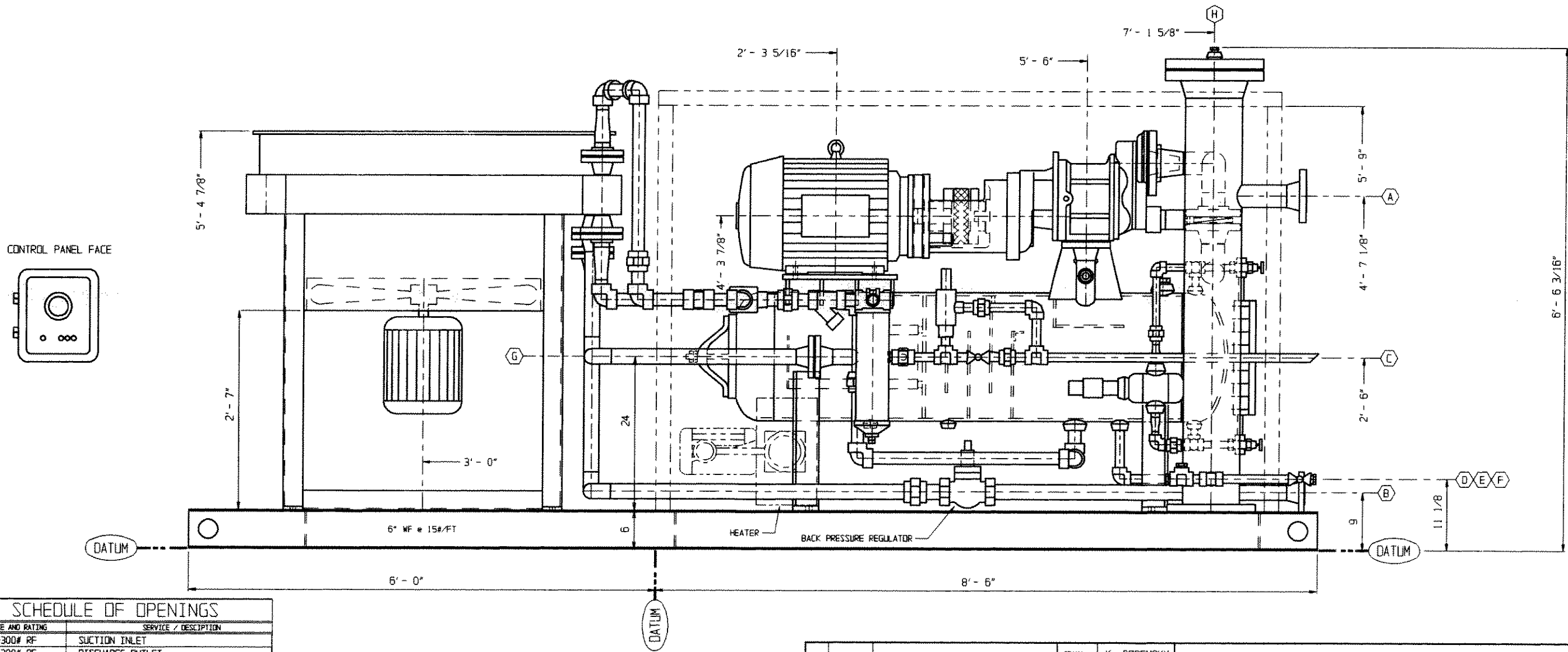


| BE DWG. NO: | C.N.R.L. REF. NO: | DIMENSION "A" FROM DATUM | DIMENSION "B" FROM DATUM | DIMENSION "C" FROM DATUM | DIMENSION "D" FROM DATUM | DIMENSION "E" FROM DATUM | DIMENSION "F" FROM DATUM |
|-------------|-------------------|--------------------------|--------------------------|--------------------------|--------------------------|--------------------------|--------------------------|
| 97-65B | 98-13 | 4' - 8" | 0' - 9 1/2" | 2' - 6" | 0' - 11 3/4" | 1' - 0" | 0' - 11 1/2" |
| 97-65F | 98-17 | 4' - 7 3/4" | 0' - 9 1/2" | 2' - 7" | 0' - 11 1/2" | 0' - 11 1/2" | 0' - 11 1/2" |
| 97-65H | 98-19 | 4' - 7 1/8" | 0' - 9 1/4" | 2' - 5 3/4" | 0' - 11 3/4" | 0' - 11 3/4" | 1' - 0" |
| 97-65L | 98-23 | 4' - 7 1/2" | 0' - 9 1/2" | 2' - 7 1/2" | 0' - 11 3/4" | 0' - 11 3/4" | 0' - 11 1/2" |
| 97-65R | 98-29 | 4' - 7 1/2" | 0' - 9 1/2" | 2' - 6 3/4" | 0' - 11 1/4" | 0' - 11 3/4" | 0' - 11 1/2" |



SCHEDULE OF OPENINGS

| TAG | SIZE AND RATING | SERVICE / DESCRIPTION |
|-----|-----------------|----------------------------------|
| A | 3" - 300# RF | SUCTION INLET |
| B | 2" - 300# RF | DISCHARGE OUTLET |
| C | 1" MITR. PIPE | RELIEF VALVE FLARE HEADER OUTLET |
| D | 1" - NPT | SCRUBBER MANUAL DRAIN |
| E | 1/2" - NPT | SCRUBBER LIQUID OUTLET |
| F | 1" - NPT | LUBE OIL SEPARATOR DRAIN |
| G | 11" x 15" ELLIP | LUBE OIL SEP. FILTER ACCESS |
| H | 8" - 300# RF | INLET SEP. FILTER ACCESS |
| J | | |
| K | | |
| L | | |
| M | | |
| N | | |
| O | | |

TOTAL PACKAGE WEIGHT = APPROX. 10,300 lbs
TOTAL PACKAGE LENGTH = 14' - 6"
TOTAL PACKAGE WIDTH = 5' - 0"
TOTAL PACKAGE HEIGHT = 6' - 6"

APPROVED
FOR CONSTRUCTION

CUSTOMER PER _____ DATE _____
ENGINEERING PER _____ DATE _____
SHOP PROD. PER _____ DATE _____

| REV | DATE | DESCRIPTION |
|-----|---------|----------------------------|
| F | MAR 29 | CHG'D ABOVE UNITS TO 75 HP |
| E | JUNE 19 | AS - BUILT #3 |
| D | MAY 05 | AS - BUILT #2 |
| C | MAR 16 | AS - BUILT |
| B | FEB 24 | AS PER CUSTOMER MARK-UP |
| A | JAN 28 | COOLER ADDED |

DRAWN K. POREMSKY
DATE JAN 12/98
SCALE 1" = 1' - 0"
CHK'D

GENERAL ASSEMBLY - ELEVATION
FOR:
U.S. ELECTRIC 75HP/ SULLAIR PDH-127.151/ GEA H-36

BIDELL EQUIPMENT
GAS COMPRESSION

3236 - 50 AVENUE S.E.
CALGARY, ALTA, T2B-3A3

PHONE: (403) 235-9877
FAX: (403) 272-7749

CUSTOMER: CANADIAN NATURAL RESOURCES
PROJECT: VAPOR RECOVERY COMPRESSOR
SHOP ORDER: BIMAC JOB #8000

DWG. No: 97-65B-2B

REVISION: F