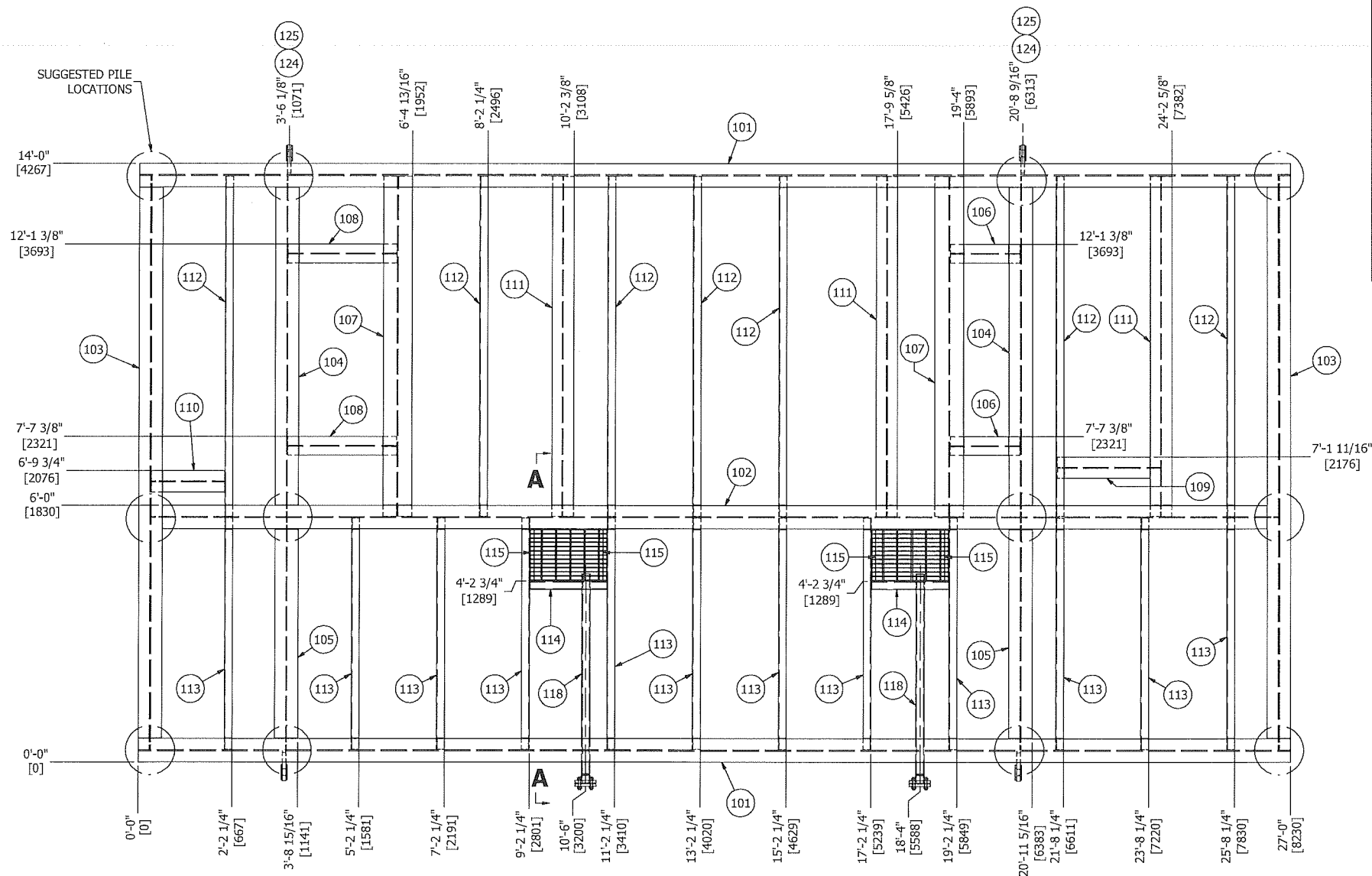


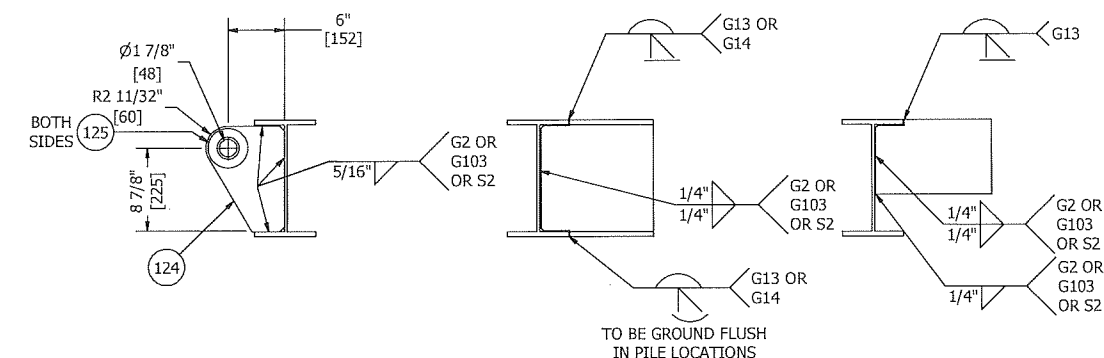
1. WELD PROCEDURE: GM-1
2. WELD PROCEDURES & WELDERS QUALIFIED AS PER CSA W59
3. SANDBLAST: SSPC-SP6 (COMMERCIAL)
4. PRIME: ONE (1) COAT DEVRAN 224
5. FINISH: TWO (2) COATS DEVRAN 229 (WARM GREY)
6. INSULATION: 3" THK FIRE RETARDANT URETHANE SPRAY FOAM UNDER SIDE OF SKID AND SUMP BOTTOMS
7. MPI: LIFT LUG FILLET WELDS
8. THE SKID HAS BEEN DESIGNED TO WITHSTAND THE FULL LOADS OF THE ATTACHED VESSEL.
AT THE HH LIQUID LEVEL, ALL STRUCTURES, EQUIPMENT, PIPING & INSTALLED BUILDING.



Rev. 1
April 1, 2014

REV	DATE	DESCRIPTION	BY	APP
A	12/04/2013	ISSUED FOR APPROVAL	JAH	CLIENT
0	12/12/2013	ISSUED FOR FABRICATION	JAH	JAM
1	4/1/2014	AS BUILT	JAH	

ITEM	QTY	REF.	PART No.	DESCRIPTION	LENGTH	MATERIAL	WEIGHT
101	2		1-003674	W12x35	27'-0"	G40.21-50W	1892.14
102	1		1-003674	W12x35 (COPE BOTH ENDS)	26'-4 7/8"	G40.21-50W	913.01
103	2		1-003674	W12x35 (COPE BOTH ENDS)	13'-4 7/8"	G40.21-50W	914.98
104	2		1-003674	W12x35 (COPE BOTH ENDS)	7'-11 7/16"	G40.21-50W	532.64
105	2		1-003674	W12x35 (COPE BOTH ENDS)	5'-4 15/16"	G40.21-50W	354.52
106	2		1-003664	W8x18 (COPE BOTH ENDS)	1'-7 1/2"	G40.21-50W	47.29
107	2		1-003666	W8x31 (COPE BOTH ENDS)	7'-11 7/16"	G40.21-50W	480.78
108	2		1-003664	W8x18 (COPE BOTH ENDS)	2'-6 5/8"	G40.21-50W	80.78
109	1		1-003659	W6x15 (COPE BOTH ENDS)	2'-5 1/16"	G40.21-50W	32.78
110	1		1-003659	W6x15 (COPE ONE END)	1'-8 5/16"	G40.21-50W	23.95
111	3		1-003659	W6x15 (COPE BOTH ENDS)	7'-11 7/16"	G40.21-50W	349.35
112	7		1-000402	C8x11.5 (COPE BOTH ENDS)	7'-11 7/16"	G40.21-44W	629.79
113	12		1-000402	C8x11.5 (COPE BOTH ENDS)	5'-4 15/16"	G40.21-44W	728.04
114	2		1-000402	C8x11.5	1'-9 1/2"	G40.21-44W	41.29
115	4		1-000016	L1.25x1.25x1/4	1'-2 5/8"	G40.21-44W	9.41
116	2		2-005272	SUMP BOTTOM 3/16" THK x 20" W x 22 1/8" LG		SA-36	47.18
117	2		1-001339	1-1/4 x 3/16" GALVINIZED SERRATED BAR GRATING 14 5/8" W x 21 1/8" LG		SA-36	40.16
118	2		1-003358	2" PIPE SCH XH/80	4'-8"	SA-106-B	47.07
119	2		1-000877	2" x CLASS 150 RFWN FLG SCH XH		SA-105-N	12.85
120	2		1-000869	2" x CLASS 150 RF BLIND FLG		SA-105-N	10.75
121	2		1-008402	2" x CLASS 150 RF "CGI" GRAPHITE FILLED GASKET		316SS	0.69
122	8		1-002627	5/8" DIA x 3 1/2" LG STUD		SA-193-B7M	2.49
123	16		1-001868	5/8" DIA HEX NUT		SA-194-2HM	2.08
124	4		2-006464	LIFT LUG 1" THK x 11 5/16" HIGH x 8 3/8" WIDE		SA-516-70N	79.29
125	8		2-005664	3/8" THK x 4 1/4" OD x 2 3/8" ID		SA-516-70N	8.32



COPE DETAIL 2

LIFT LUG DESIGNED
TO BE USED WITH
17t CROSBY SCREW PIN SHACKLE



This drawing is property of BILTON WELDING AND MANUFACTURING LTD and is lent to the recipient for their confidential use only. In consideration of the loan of this drawing, the recipient promises and agrees that it shall not be used in any way detrimental to the interests of BILTON WELDING AND MANUFACTURING LTD, that it shall be returned upon request, and shall not be reproduced, copied, lent, or otherwise disposed of, directly or indirectly, without the written consent of BILTON WELDING AND MANUFACTURING LTD.

BOX 6106
5815 37 Street
INNISFAIR, AB
CANADA
403-227-7799
1-888-227-492
FAX 227-7796

CANADIAN NATURAL RESOURCES LIMITED
SADDLE HILLS BATTERY GROUP SEPARATOR (V-200) PACKAGE
BASE STRUCTURE DETAIL

DATE: 11/19/2013	SALE ORDER:	
SHEET: 1 OF 1	JOB ORDER:	SIZE
PURCHASE ORDER:	D2415	D
LOCATION:	DRAWING NO.:	REV.
CRN DWG:	D2415-502	1
CRN NUMBER:		
PROJECT MANAGER:		