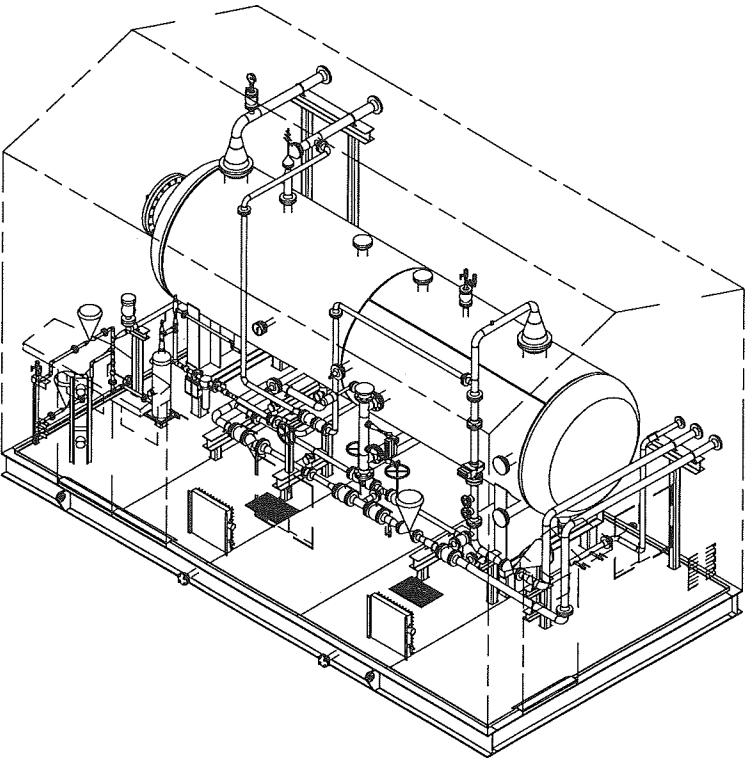
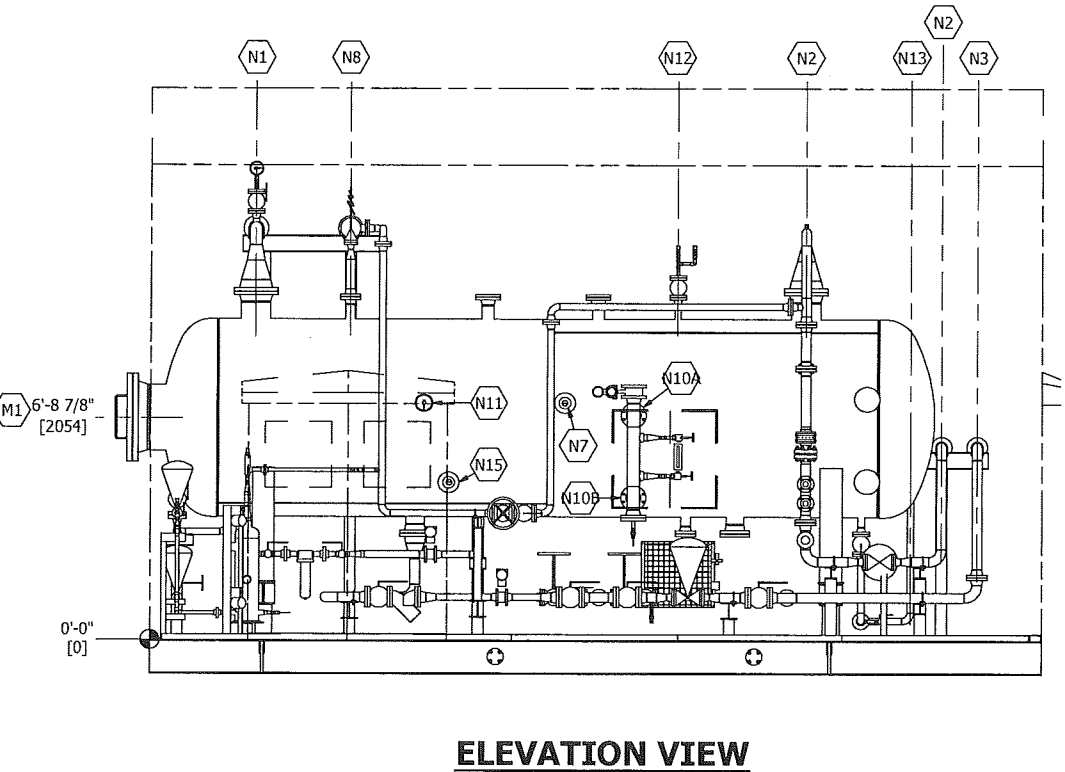
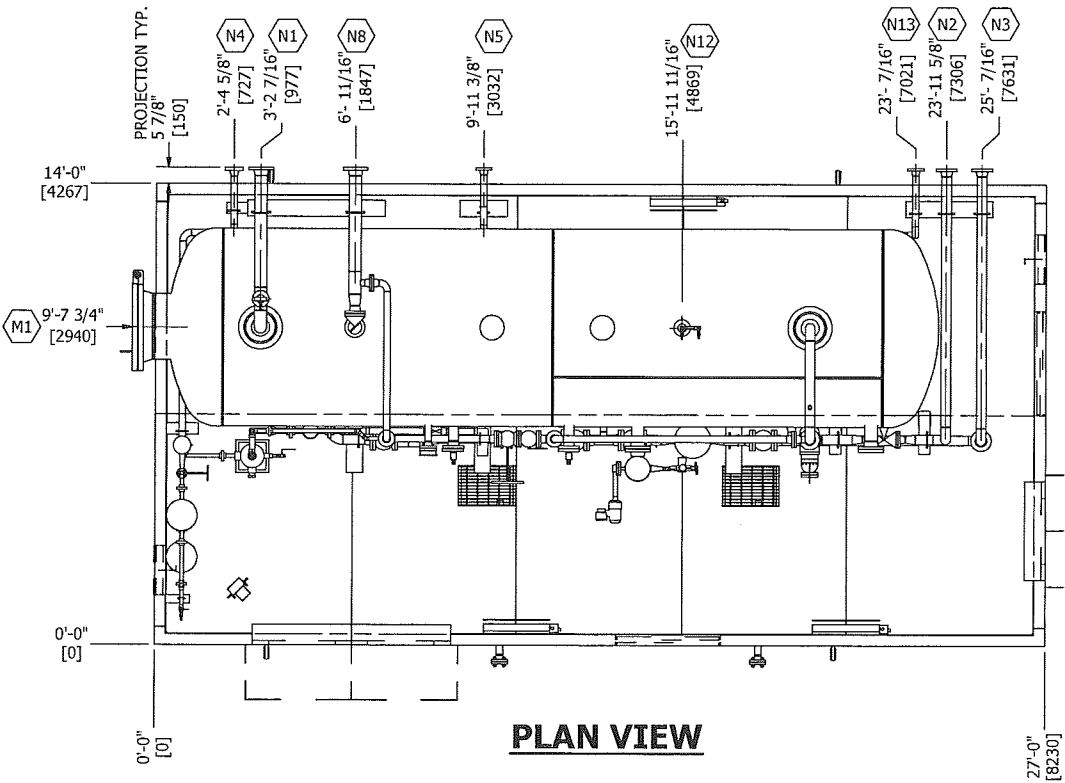


ISOMETRIC VIEW



ISOMETRIC VIEW

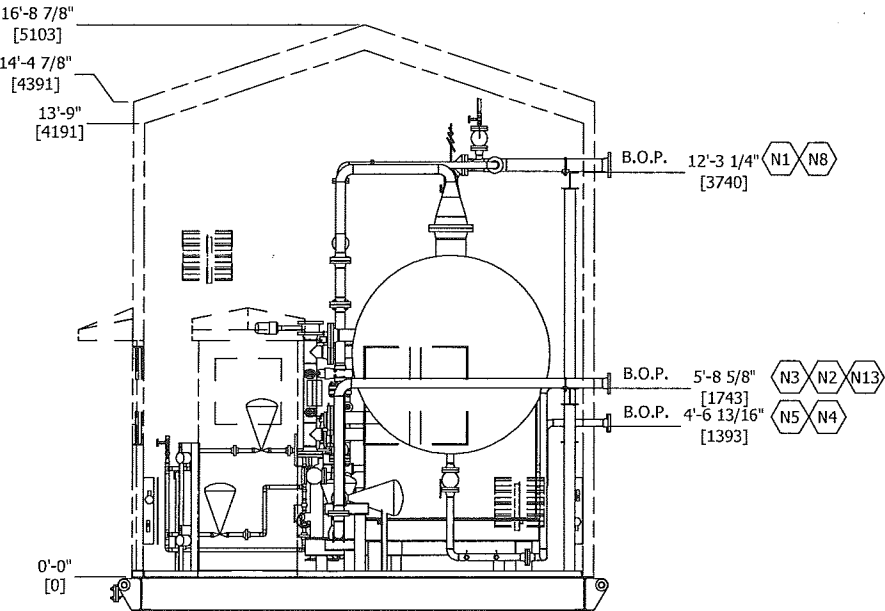


BILL OF MATERIALS						
ITEM	QTY	REF.	PART No.	DESCRIPTION	LENGTH	MATERIAL
1	1		-	VESSEL ASSEMBLY (SEE FORMOST DWG V-029307-D101 FOR DETAILS)		12115.72
2	1		-	4" NPS BRIDLE ASSEMBLY(SEE FORMOST DWG V-029307-C110 FOR DETAILS)		105.35
3	1		-	SKID ASSEMBLY (SEE DWG D2415-501 FOR DETAILS)		12743.75
4	1		-	PIPING ASSEMBLY (SEE ISOMETRIC DWGS D2415-700 FOR DETAILS)		2267.90
5	1		-	METALEX BUILDING PACKAGE		5995.00
						36450.14

GENERAL NOTES:

1. ALL ELEVATIONS TAKEN FROM TOP OF SKID (CHECKERPLATE NOT INCLUDED)
2. PIPING LESS THAN 2" NPS (NOT SHOWN) TO BE FIELD RUN
3. SHIPPING DIMENSIONS: 15'-2" W x 18'-0" H x 28'-2" LG
4. SHIPPING WEIGHT: 38,275 LBS (INCLUDES 5%)

PROCESS CONNECTION SCHEDULE			
TAG	SIZE	CLASS	DISCRIPTION
N1	4"	150	EMULSION INLET
N2	3"	150	PRODUCED GAS OUTLET
N3	3"	150	EMULSION OUTLET
N4	2"	600	HP FUEL GAS INLET
N5	2"	150	HP FUEL GAS OUTLET
N7	3"	150	LSHH-200
N8	4"	150	FLARE
N10A	4"	150	LIT/LG-200
N10B	4"	150	LIT/LG-200
N11	2"	150	TI-200
N12	2"	150	PIT/PSHH-200
N13	3"	150	DRAIN
N15	3"	150	LSLL-200
M1	24"	150	MANWAY



BILTON		BOX 6106 5815 37 Street INNISFAIL, AB CANADA 403-227-7799 1-888-227-4923 FAX 227-7796		CANADIAN NATURAL RESOURCES LIMITED	
Welding and Manufacturing Ltd.		This drawing is property of BILTON WELDING AND MANUFACTURING LTD and is lent to the recipient for their confidential use only. In consideration of the loan of this drawing, the recipient promises and agrees that it shall not be used in any way detrimental to the interests of BILTON WELDING AND MANUFACTURING LTD, that it shall be returned upon request, and shall not be reproduced, copied, lent, or otherwise disposed of, directly or indirectly, without the written consent of BILTON WELDING AND MANUFACTURING LTD.		SADDLE HILLS BATTERY GROUP SEPARATOR (V-200) PACKAGE FINAL ASSEMBLY DETAILS	
DATE: 11/27/2013		SALE ORDER: 003538		SIZE	
SHEET: 1 OF 1		JOB ORDER:		D2415	
PURCHASE ORDER: FC131075-10131		LOCATION: 06-16-072-04-W6M		REV.	
CRN DWG:		DRAWING NO.:		D2415-010	
CRN NUMBER:		PROJECT MANAGER: MARK ELLIOTT		1	

REV	DATE	DESCRIPTION	BY	APP
A	12/04/2013	ISSUED FOR APPROVAL	JAH	CLIENT
0	12/12/2013	ISSUED FOR FABRICATION	JAH	JAM
1	4/1/2014	AS BUILT	JAH	